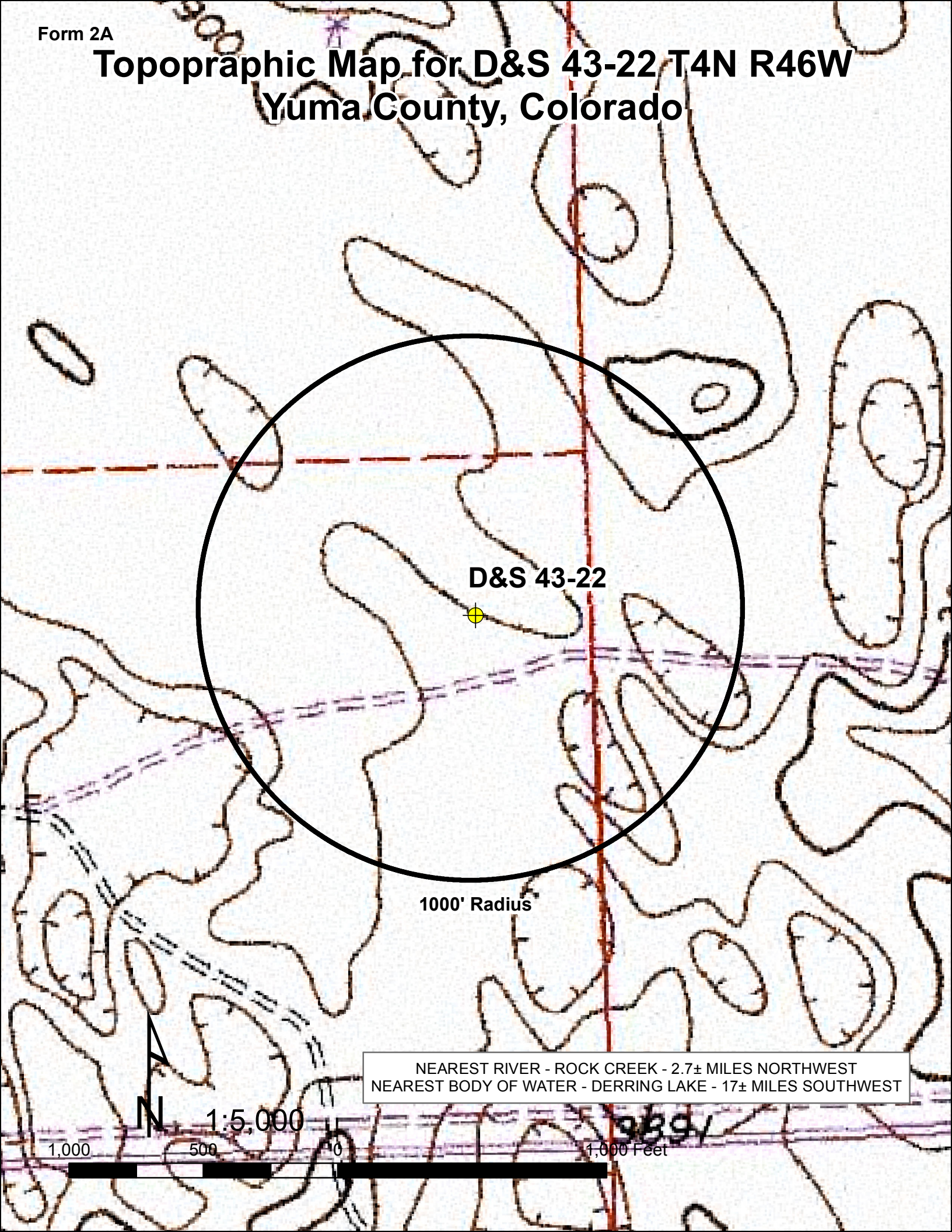


Topographic Map for D&S 43-22 T4N R46W Yuma County, Colorado



D&S 43-22

1000' Radius

N

1:5,000

1,000

500

100

1,000 Feet

NEAREST RIVER - ROCK CREEK - 2.7± MILES NORTHWEST
NEAREST BODY OF WATER - DERRING LAKE - 17± MILES SOUTHWEST