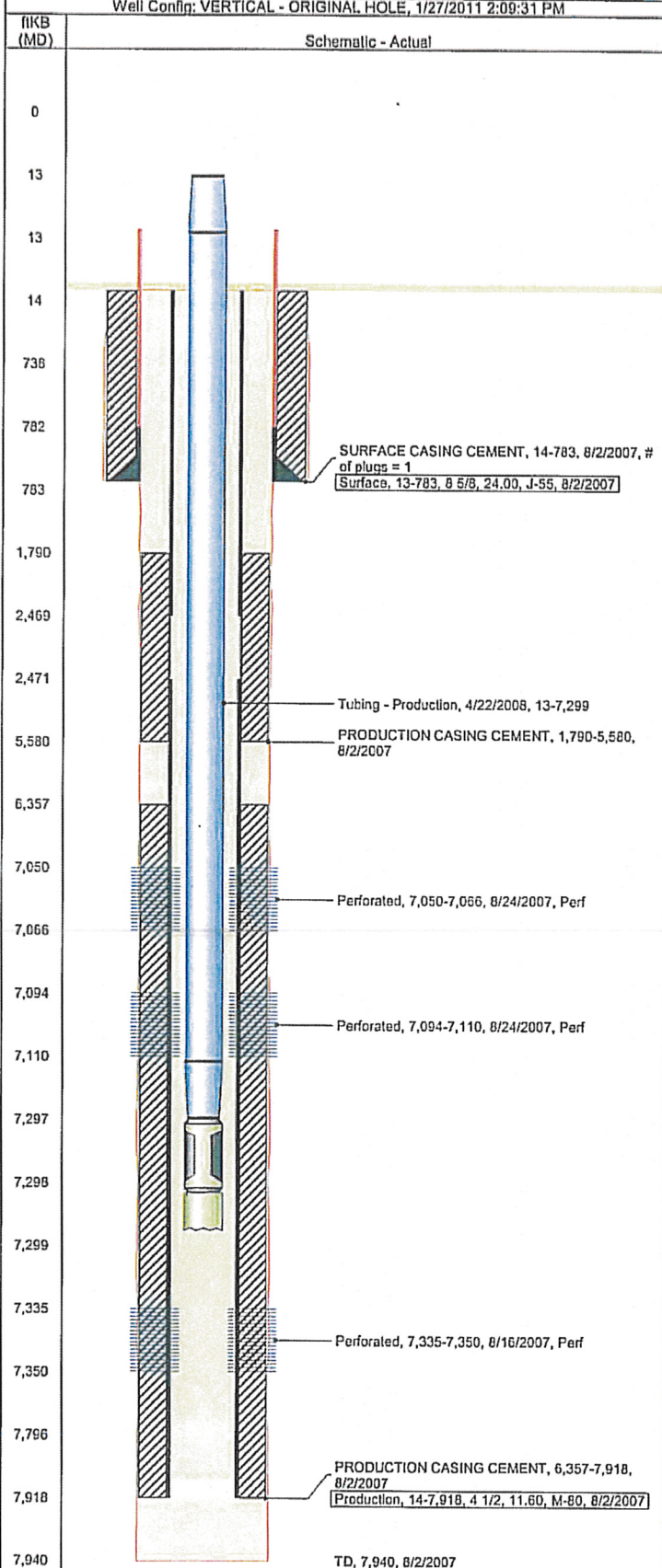


Frac Wellbore Schematic Report

Well Name: WARDELL H19-24

Well Config: VERTICAL - ORIGINAL HOLE, 1/27/2011 2:09:31 PM



Well Header

API	Business Unit	Spud Date	Well Configuration Type
05-123-25989	WATTENBERG	7/29/2007	VERTICAL
Orig KB Elev (ft)	KB - GL / ...	Quarter Quarter	Sec/Abs
4,968.00	14	SESW	19
		Twn/Sur...	Range
		3N	65W

Comment

no cmnt bond from 2050-2560; minimal bond 2710-6356;

Directions To Well

RD 32 & RD 39, W 1 MILE, S .7, SE.2 TO BATTERY, E.2, S.1 INTO

Bottom Hole Location

North-South Distance (ft)	From N or S Line	East-West Distance (ft)	From E or W Line

PBTDs

Date	Depth (ftKB)	Method	Comment
8/2/2007	7,928.0	CASING TALLY	
4/22/2008	7,795.9	TBG TALLY	TAGGED CIPF REMAINS @ ...

Wellbore Sections

Section	Size (in)	Act Top (ftKB)	Act Blm (ftKB)
SURFACE	12 1/4	14.0	783.0
PRODUCTION	7 7/8	783.0	7,940.0

Zone Statuses

Zone	Status Date	Status	Job
CODELL	9/6/2007	Flowing	DRILLING/COMPLETION - ORIGI...
NIOBRARA	9/6/2007	Flowing	DRILLING/COMPLETION - ORIGI...

Casing Strings

Casing Description	Run Date	String OD (in)	String Wt (lbs/ft)	String Grade	Top (ftKB)	Set Depth (ftKB)
Surface	8/2/2007	8 5/8	24.00	J-55	13.4	783.0
Production	8/2/2007	4 1/2	11.60	M-80	14.0	7,918.0

Cement

Description	Top (ftKB)	Blm (ftKB)
SURFACE CASING CEMENT	14.0	783.0
PRODUCTION CASING CEMENT	1,790.0	5,580.0
PRODUCTION CASING CEMENT	6,357.0	7,918.0

Tubing Components

Item Description	OD (in)	Wt (lbs/ft)	Grade	Jts	Len (ft)
Tubing	2 3/8	4.70	J-55	237	7,284.23
Seating Nipple	2 3/8			1	1.10
Notched collar	2 3/8			1	0.40

Perforation Data

Zone	Bnch/Stg	Entered Shot Total	Top (ftKB)	Blm (ftKB)	Date
NIOBRARA, ORIGI...		64	7,050.0	7,066.0	8/24/2007
NIOBRARA, ORIGI...		64	7,094.0	7,110.0	8/24/2007
CODELL, ORIGINA...		60	7,335.0	7,350.0	8/16/2007

Stimulations & Treatments

Bnch/...	Date	Zone	Primary Job Type
	8/24/2007		
Comment			
WET SAND CAUSED FLUCTUATION IN SAND CONCENTRATION			
Total Add Amount	V (pumped) (gal)	V (slurry) (gal)	V (gas) (mcf)
0	7119000		
Avg Treat Pressure (psi)	Max Treat Pressure (psi)	Avg Treat Rate (bbl/min)	Max Treat Rate (bbl/min)
4,473.0	4,973.0	1.10	1.19
Bnch/...	Date	Zone	Primary Job Type
	8/24/2007		
Comment			

Total Add Amount	V (pumped) (gal)	V (slurry) (gal)	V (gas) (mcf)
0	6598158		
Avg Treat Pressure (psi)	Max Treat Pressure (psi)	Avg Treat Rate (bbl/min)	Max Treat Rate (bbl/min)
4,505.0	4,768.0	1.19	1.25

Other In Hole

Run Date	Description	OD (in)	Top (ftKB)	Blm (ftKB)

Logs

Date	Type	Top (ftKB)	Blm (ftKB)
8/2/2007	Compensated Density	2,650.0	7,913.0
8/2/2007	Gamma Ray	783.0	7,933.0
8/16/2007	CBL/CCL/GR	1,660.0	7,892.0