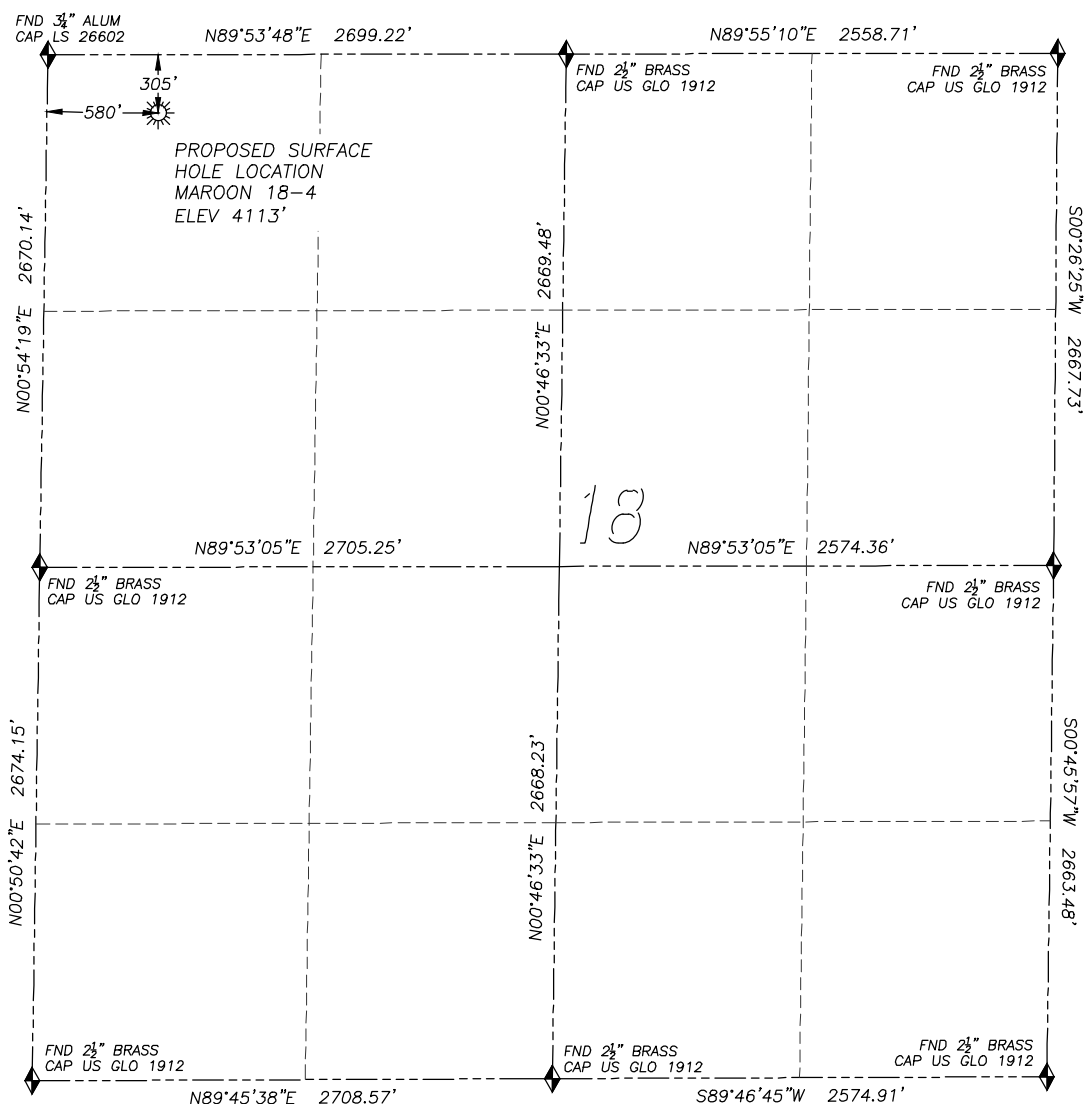


WELL LOCATION CERTIFICATE

MAROON 18-4

SECTION 18, TOWNSHIP 2 SOUTH, RANGE 46 WEST OF THE 6TH PRINCIPAL MERIDIAN



0 500 1000
SCALE: 1" = 1000'

LEGEND

- ◆ FOUND MONUMENT AS DESCRIBED
- ☀ PROPOSED WELL
- EXISTING WELL
- BOTTOM HOLE
- ⊗ ABANDONED WELL

NAD 83 LATITUDE AND LONGITUDE

MAROON 18-4 SURFACE HOLE:

LATITUDE: N39.88912°
 LONGITUDE: W102.57428°
 ELEVATION: 4113'
 FOOTAGE: 305' FNL, 580' FWL
 PDOP: 2.0
 QTR/QTR: NW4/NW4
 PROP LINE: 305'± NORTH
 GPS OPERATOR: K. DALEY

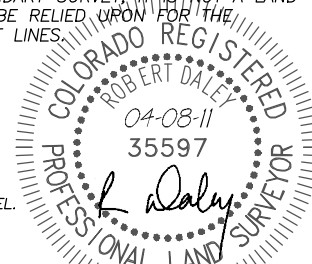
IN ACCORDANCE WITH A REQUEST FROM MARK ELLIOT OF MCELVAIN OIL & GAS PROPERTIES, DALEY LAND SURVEYING, INC. HAS DETERMINED THE SURFACE LOCATION OF THE MAROON 18-4 WELL TO BE 305' FNL, 580' FWL, AS MEASURED AT NINETY (90) DEGREES FROM THE SECTION LINES OF SECTION 18, TOWNSHIP 2 SOUTH, RANGE 46 WEST OF THE 6TH PRINCIPAL MERIDIAN, YUMA COUNTY, COLORADO.

I HEREBY CERTIFY THAT THIS WELL LOCATION CERTIFICATE WAS PREPARED BY ME OR UNDER MY DIRECT SUPERVISION, THAT THE WORK WAS COMPLETED ON 4/6/2011 FOR AND ON BEHALF OF MCELVAIN OIL & GAS PROPERTIES, AND THAT THIS MAP DOES NOT REPRESENT A BOUNDARY SURVEY, IT IS NOT A LAND SURVEY PLAT OR AN IMPROVEMENT SURVEY PLAT AND IT IS NOT TO BE RELIED UPON FOR THE ESTABLISHMENT OF FENCE, BUILDING OR OTHER FUTURE IMPROVEMENT LINES.

NOTES:

- 1) BEARINGS FOR THIS MAP ARE ASSUMED AND BASED UPON GPS OBSERVATIONS MADE BETWEEN MONUMENTS LOCATED AT THE NORTHWEST CORNER AND WEST QUARTER CORNER OF SECTION 18, T.2S., R.46W.
- 2) HORIZONTAL DATUM IS NAD83.
- 3) VERTICAL DATUM IS NAVD88. ELEVATIONS ARE DERIVED FROM GPS OBSERVATIONS PROCESSED THROUGH OPUS, UTILIZING THE GEOID03 MODEL.
- 4) SEE LOCATION DRAWING FOR VISIBLE IMPROVEMENTS WITHIN 600' OF PROPOSED SURFACE HOLE LOCATION.
- 5) SURFACE USE: PASTURE.

NOTICE: According to Colorado law you MUST commence any legal action based upon any defect in this W.L.C. within three years after you first discover such defect. In no event may any action based upon any such defect in this W.L.C. be commenced more than ten years from the date of the certification shown hereon.



FOR AND ON BEHALF OF
 DALEY LAND SURVEYING INC.,
 Robert Daley, PLS 35597