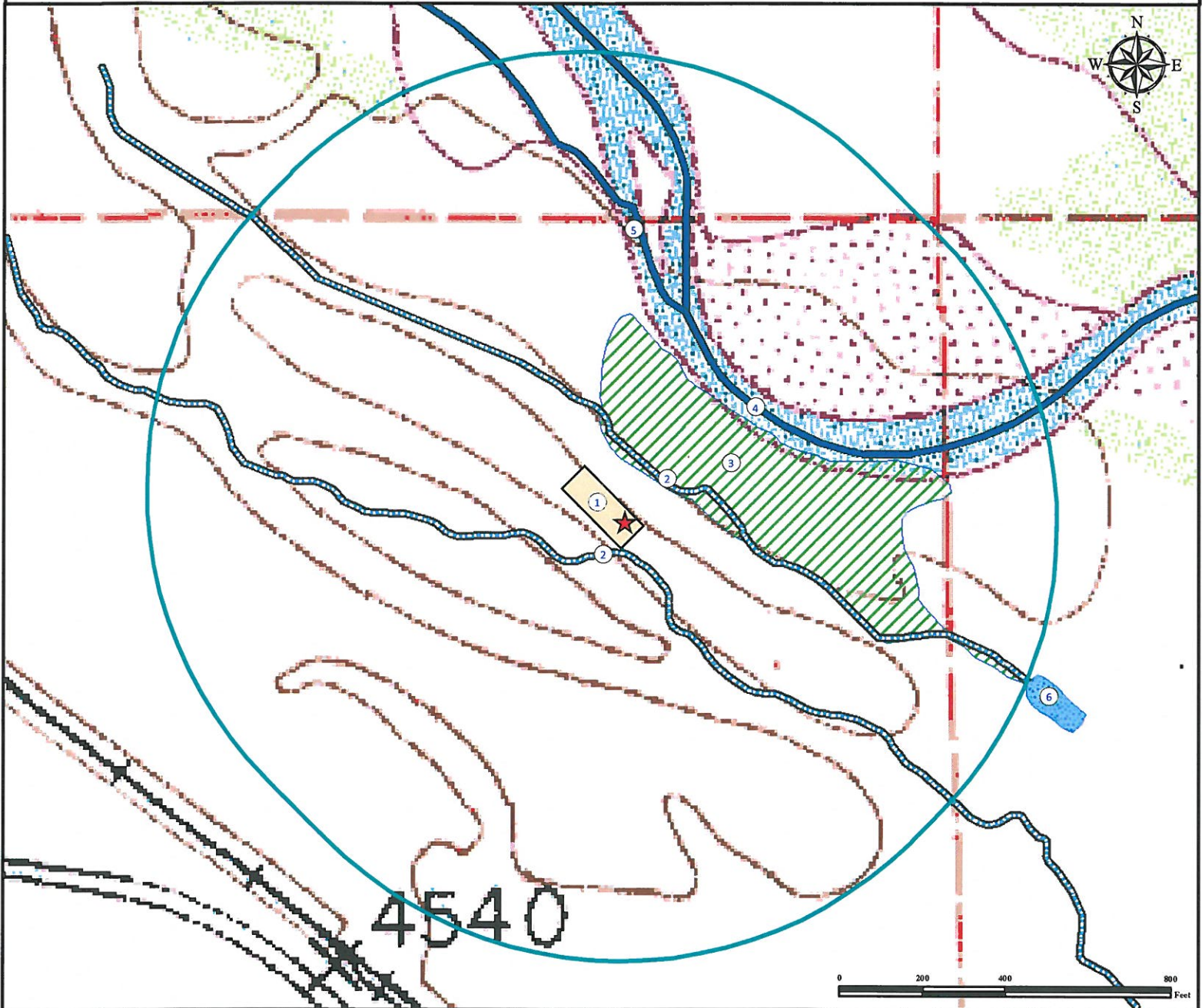


Hydrology Map

NORTH PLATTE 44-11-28HZ Facility

NE¼ NE¼ SECTION 33, TOWNSHIP 5 NORTH, RANGE 63 WEST OF THE 6TH PRINCIPAL MERIDIAN



1. Proposed NORTH PLATTE 44-11-28HZ Facility.
2. Intermittent Streams are $\pm 75'$ SW (feature dry at time of mapping) and $\pm 139'$ NE.
3. Wetland Area is $\pm 127'$ NE.
4. South Platte River is $\pm 417'$ NE.
5. Artificial Flow Path of South Platte River is $\pm 548'$ N. (Features provided by NDIS)
6. Pond is $\pm 1047'$ SE.

Legend

- | | |
|-------------------|---------------------|
| Proposed Facility | Pond |
| 1000' Radius | River/Flow Path |
| Reference Point | Intermittent Stream |
| Wetland Area | |

Reference Location

** All Measurements are Made from
★ Reference Point **
LAT: 40.361094° LONG: -104.434362° (NAD83)
Elevation: 4533 Feet



Use our resources to find yours!
www.petro-fs.com
(303) 928-7128

Field Date: 04/14/2011
Drafting Date: 04/18/2011
Drafter: KLM
Checked By: BHF

Data Sources:
- Topo courtesy of USGS
- River/Flow Path courtesy of NDIS 24K Layer.

Prepared for:

BONANZA CREEK
ENERGY OPERATING CO., LLC