

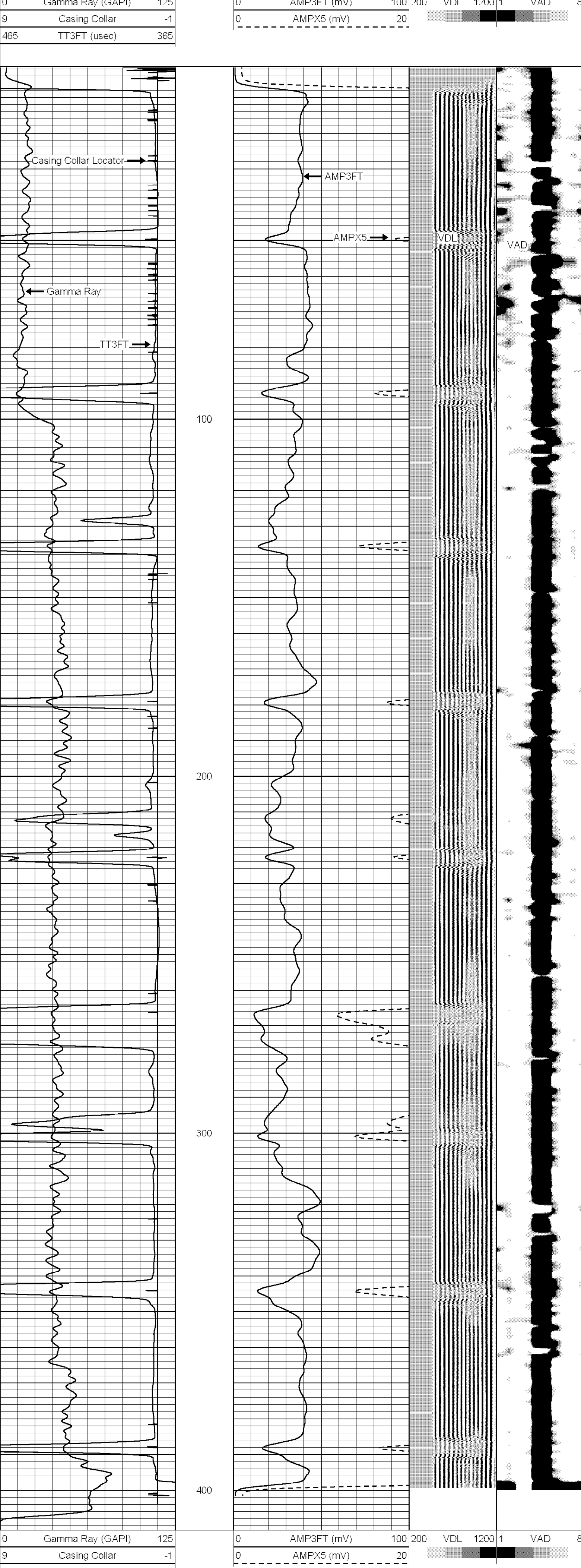


## MENT BOND LOG

[illegible]

<<< Fold Here >>>	
All interpretations are opinions based on inferences from electrical or other measurements and we cannot and do not guarantee the accuracy or correctness of any interpretation, and we shall not, except in the case of gross or willful negligence on our part, be liable or responsible for any loss, costs, damages, or expenses incurred or sustained by anyone resulting from any interpretation made by any of our officers, agents or employees. These interpretations are also subject to our general terms and conditions set out in our current Price Schedule.	
Comments	

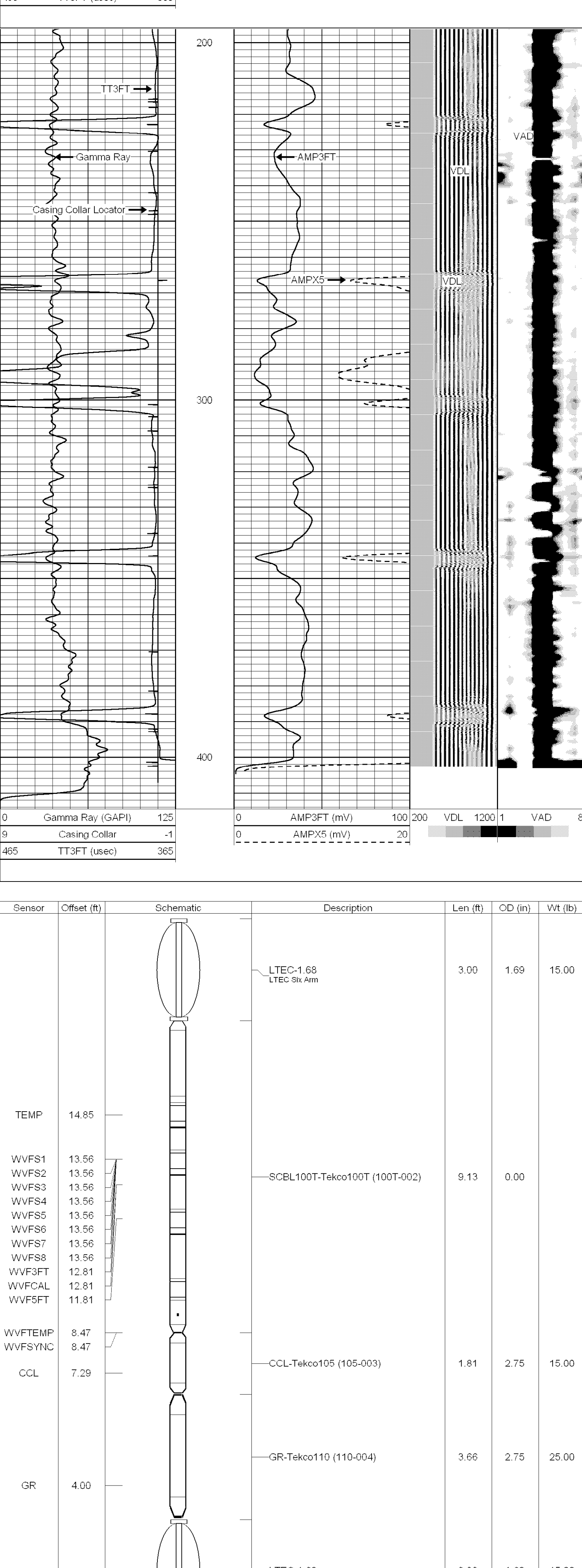
Database File:	mansur 33-1-k.db				
Dataset Pathname:	pass9				
Presentation Format:	1scbtvad				
Dataset Creation:	Wed Jun 02 12:19:41 2010 by Log Std Casedhole 07122				
Charted by:	Depth in Feet scaled 1:240				




Presentation Format:	1scbtvad
Dataset Creation:	Wed Jun 02 12:10:51 2010 by Log Std Casedhole 07122
Charted by:	Depth in Feet scaled 1:240

0	Gamma Ray (GAPI)	125	0	AMP3FT (mV)	100	200	VDL	1200	1	VAD	8
9	Casing Collar	-1	0	AMPX5 (mV)	20						
465	TT3FT (usec)	365									



			LTEC-1.68 LTEC Six Arm	3.00	1.69	15.00
Dataset:		mansur 33-1-k.db: field/well/run1/pass9				
Total length:		26.69 ft				