

ENSIGN

Directional

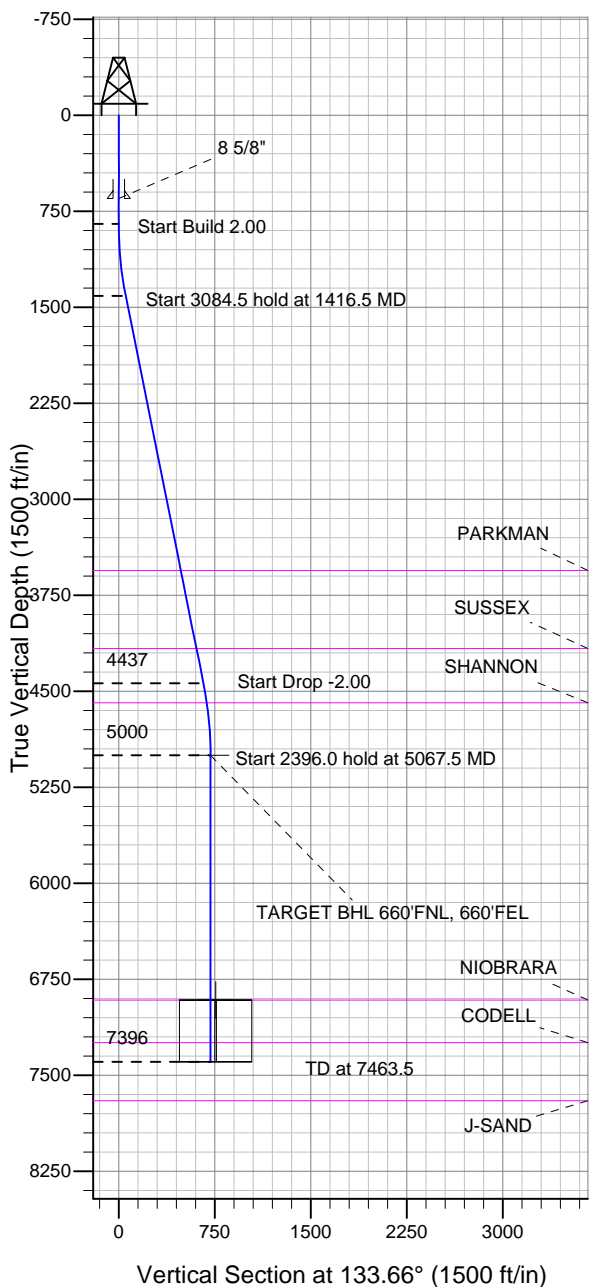
Well Name: Schell 41-6

Surface Location: Schell 41-6 Pad Sec.6-T3N-R67W
 North American Datum 1983 US State Plane 1983 Colorado Northern Zone

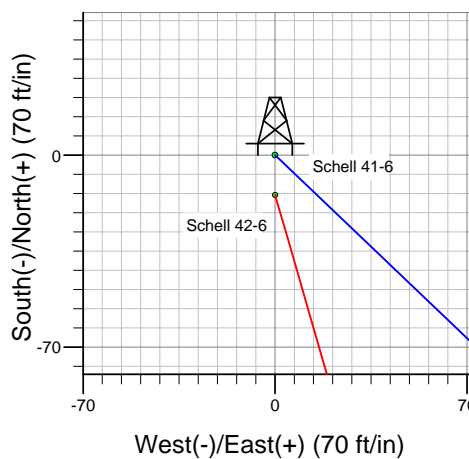
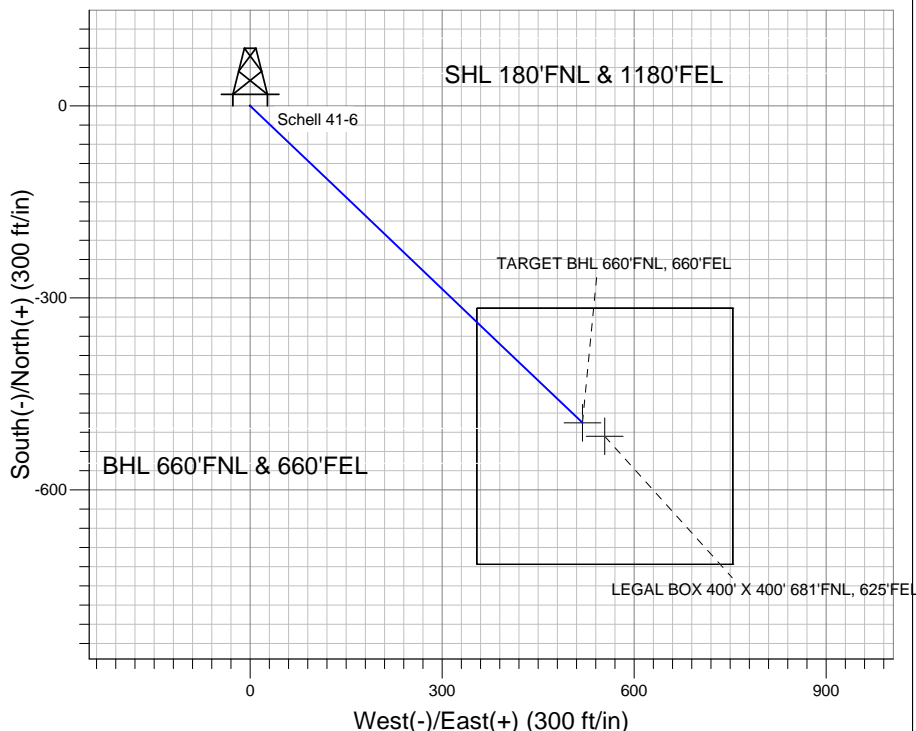
Ground Elevation: 4916.0

+N/-S	+E/-W	Northing	Easting	Latitude	Longitude	Slot
0.0	0.0	1338862.07	3159756.31	40.262160	-104.927550	

Original Well Elev WELL @ 4929.0ft (Original Well Elev)



Sundance Energy, Weld County, CO



Schell 41-6 Pad Sec.6-T3N-R67W
 Schell 41-6
 Plan #3 (4-19-11)
 16:08, April 19 2011



Azimuths to True North
 Magnetic North: 8.96°

Magnetic Field
 Strength: 53057.0nT
 Dip Angle: 66.92°
 Date: 4/19/2011
 Model: IGRF2010

WELLBORE TARGET DETAILS (LAT/LONG)

Name	TVD	+N/-S	+E/-W	Latitude	Longitude	Shape
TARGET BHL 660'FNL, 660'FEL	5000.0	-495.4	519.1	40.260800	-104.925690	Point
LEGAL BOX 400' X 400' 681'FNL, 625'FEL	6913.0	-516.4	554.1	40.260742	-104.925565	Rectangle (Sides: L400.0 W400.0)

SECTION DETAILS

Sec	MD	Inc	Azi	TVD	+N/-S	+E/-W	DLeg	TFace	VSec	Target
1	0.0	0.00	0.00	0.0	0.0	0.0	0.00	0.00	0.0	
2	850.0	0.00	0.00	850.0	0.0	0.0	0.00	0.00	0.0	
3	1416.5	11.33	133.66	1412.8	-38.5	40.4	2.00	133.66	55.8	
4	4501.0	11.33	133.66	4437.2	-456.9	478.7	0.00	0.00	661.8	
5	5067.5	0.00	0.00	5000.0	-495.4	519.1	2.00	180.00	717.6	TARGET BHL 660'FNL, 660'FEL
6	7463.5	0.00	0.00	7396.0	-495.4	519.1	0.00	0.00	717.6	



Directional

Sundance Energy, Weld County, CO

SEC.6-T3N-R67W

Schell 41-6 Pad Sec.6-T3N-R67W

Schell 41-6

Wellbore #1

Plan: Plan #3 (4-19-11)

Standard Planning Report

19 April, 2011

Plan Sections										
Measured Depth (ft)	Inclination (°)	Azimuth (°)	Vertical Depth (ft)	+N/-S (ft)	+E/-W (ft)	Dogleg Rate (°/100ft)	Build Rate (°/100ft)	Turn Rate (°/100ft)	TFO (°)	Target
0.0	0.00	0.00	0.0	0.0	0.0	0.00	0.00	0.00	0.00	
850.0	0.00	0.00	850.0	0.0	0.0	0.00	0.00	0.00	0.00	
1,416.5	11.33	133.66	1,412.8	-38.5	40.4	2.00	2.00	0.00	133.66	
4,501.0	11.33	133.66	4,437.2	-456.9	478.7	0.00	0.00	0.00	0.00	
5,067.5	0.00	0.00	5,000.0	-495.4	519.1	2.00	-2.00	0.00	180.00	TARGET BHL 660°
7,463.5	0.00	0.00	7,396.0	-495.4	519.1	0.00	0.00	0.00	0.00	

Database:	Landmark	Local Co-ordinate Reference:	Well Schell 41-6
Company:	Sundance Energy, Weld County, CO	TVD Reference:	WELL @ 4929.0ft (Original Well Elev)
Project:	SEC.6-T3N-R67W	MD Reference:	WELL @ 4929.0ft (Original Well Elev)
Site:	Schell 41-6 Pad Sec.6-T3N-R67W	North Reference:	True
Well:	Schell 41-6	Survey Calculation Method:	Minimum Curvature
Wellbore:	Wellbore #1		
Design:	Plan #3 (4-19-11)		

Planned Survey									
Measured Depth (ft)	Inclination (°)	Azimuth (°)	Vertical Depth (ft)	+N/-S (ft)	+E/-W (ft)	Vertical Section (ft)	Dogleg Rate (°/100ft)	Build Rate (°/100ft)	Turn Rate (°/100ft)
0.0	0.00	0.00	0.0	0.0	0.0	0.0	0.00	0.00	0.00
40.0	0.00	0.00	40.0	0.0	0.0	0.0	0.00	0.00	0.00
80.0	0.00	0.00	80.0	0.0	0.0	0.0	0.00	0.00	0.00
120.0	0.00	0.00	120.0	0.0	0.0	0.0	0.00	0.00	0.00
160.0	0.00	0.00	160.0	0.0	0.0	0.0	0.00	0.00	0.00
200.0	0.00	0.00	200.0	0.0	0.0	0.0	0.00	0.00	0.00
240.0	0.00	0.00	240.0	0.0	0.0	0.0	0.00	0.00	0.00
280.0	0.00	0.00	280.0	0.0	0.0	0.0	0.00	0.00	0.00
320.0	0.00	0.00	320.0	0.0	0.0	0.0	0.00	0.00	0.00
360.0	0.00	0.00	360.0	0.0	0.0	0.0	0.00	0.00	0.00
400.0	0.00	0.00	400.0	0.0	0.0	0.0	0.00	0.00	0.00
440.0	0.00	0.00	440.0	0.0	0.0	0.0	0.00	0.00	0.00
480.0	0.00	0.00	480.0	0.0	0.0	0.0	0.00	0.00	0.00
520.0	0.00	0.00	520.0	0.0	0.0	0.0	0.00	0.00	0.00
560.0	0.00	0.00	560.0	0.0	0.0	0.0	0.00	0.00	0.00
600.0	0.00	0.00	600.0	0.0	0.0	0.0	0.00	0.00	0.00
640.0	0.00	0.00	640.0	0.0	0.0	0.0	0.00	0.00	0.00
650.0	0.00	0.00	650.0	0.0	0.0	0.0	0.00	0.00	0.00
8 5/8"									
680.0	0.00	0.00	680.0	0.0	0.0	0.0	0.00	0.00	0.00
720.0	0.00	0.00	720.0	0.0	0.0	0.0	0.00	0.00	0.00
760.0	0.00	0.00	760.0	0.0	0.0	0.0	0.00	0.00	0.00
800.0	0.00	0.00	800.0	0.0	0.0	0.0	0.00	0.00	0.00
840.0	0.00	0.00	840.0	0.0	0.0	0.0	0.00	0.00	0.00
850.0	0.00	0.00	850.0	0.0	0.0	0.0	0.00	0.00	0.00
880.0	0.60	133.66	880.0	-0.1	0.1	0.2	2.00	2.00	0.00
920.0	1.40	133.66	920.0	-0.6	0.6	0.9	2.00	2.00	0.00
960.0	2.20	133.66	960.0	-1.5	1.5	2.1	2.00	2.00	0.00
1,000.0	3.00	133.66	999.9	-2.7	2.8	3.9	2.00	2.00	0.00
1,040.0	3.80	133.66	1,039.9	-4.3	4.6	6.3	2.00	2.00	0.00
1,080.0	4.60	133.66	1,079.8	-6.4	6.7	9.2	2.00	2.00	0.00
1,120.0	5.40	133.66	1,119.6	-8.8	9.2	12.7	2.00	2.00	0.00
1,160.0	6.20	133.66	1,159.4	-11.6	12.1	16.8	2.00	2.00	0.00
1,200.0	7.00	133.66	1,199.1	-14.7	15.4	21.4	2.00	2.00	0.00
1,240.0	7.80	133.66	1,238.8	-18.3	19.2	26.5	2.00	2.00	0.00
1,280.0	8.60	133.66	1,278.4	-22.2	23.3	32.2	2.00	2.00	0.00
1,320.0	9.40	133.66	1,317.9	-26.6	27.8	38.5	2.00	2.00	0.00
1,360.0	10.20	133.66	1,357.3	-31.3	32.8	45.3	2.00	2.00	0.00
1,400.0	11.00	133.66	1,396.6	-36.3	38.1	52.6	2.00	2.00	0.00
1,416.5	11.33	133.66	1,412.8	-38.5	40.4	55.8	2.00	2.00	0.00
1,440.0	11.33	133.66	1,435.9	-41.7	43.7	60.4	0.00	0.00	0.00
1,480.0	11.33	133.66	1,475.1	-47.2	49.4	68.3	0.00	0.00	0.00
1,520.0	11.33	133.66	1,514.3	-52.6	55.1	76.2	0.00	0.00	0.00
1,560.0	11.33	133.66	1,553.5	-58.0	60.8	84.0	0.00	0.00	0.00
1,600.0	11.33	133.66	1,592.7	-63.4	66.5	91.9	0.00	0.00	0.00
1,640.0	11.33	133.66	1,632.0	-68.9	72.1	99.7	0.00	0.00	0.00
1,680.0	11.33	133.66	1,671.2	-74.3	77.8	107.6	0.00	0.00	0.00
1,720.0	11.33	133.66	1,710.4	-79.7	83.5	115.5	0.00	0.00	0.00
1,760.0	11.33	133.66	1,749.6	-85.1	89.2	123.3	0.00	0.00	0.00
1,800.0	11.33	133.66	1,788.8	-90.6	94.9	131.2	0.00	0.00	0.00
1,840.0	11.33	133.66	1,828.1	-96.0	100.6	139.0	0.00	0.00	0.00
1,880.0	11.33	133.66	1,867.3	-101.4	106.3	146.9	0.00	0.00	0.00
1,920.0	11.33	133.66	1,906.5	-106.8	111.9	154.7	0.00	0.00	0.00
1,960.0	11.33	133.66	1,945.7	-112.3	117.6	162.6	0.00	0.00	0.00

Database:	Landmark	Local Co-ordinate Reference:	Well Schell 41-6
Company:	Sundance Energy, Weld County, CO	TVD Reference:	WELL @ 4929.0ft (Original Well Elev)
Project:	SEC.6-T3N-R67W	MD Reference:	WELL @ 4929.0ft (Original Well Elev)
Site:	Schell 41-6 Pad Sec.6-T3N-R67W	North Reference:	True
Well:	Schell 41-6	Survey Calculation Method:	Minimum Curvature
Wellbore:	Wellbore #1		
Design:	Plan #3 (4-19-11)		

Planned Survey									
Measured Depth (ft)	Inclination (°)	Azimuth (°)	Vertical Depth (ft)	+N/-S (ft)	+E/-W (ft)	Vertical Section (ft)	Dogleg Rate (°/100ft)	Build Rate (°/100ft)	Turn Rate (°/100ft)
2,000.0	11.33	133.66	1,984.9	-117.7	123.3	170.5	0.00	0.00	0.00
2,040.0	11.33	133.66	2,024.2	-123.1	129.0	178.3	0.00	0.00	0.00
2,080.0	11.33	133.66	2,063.4	-128.5	134.7	186.2	0.00	0.00	0.00
2,120.0	11.33	133.66	2,102.6	-134.0	140.4	194.0	0.00	0.00	0.00
2,160.0	11.33	133.66	2,141.8	-139.4	146.0	201.9	0.00	0.00	0.00
2,200.0	11.33	133.66	2,181.0	-144.8	151.7	209.7	0.00	0.00	0.00
2,240.0	11.33	133.66	2,220.3	-150.2	157.4	217.6	0.00	0.00	0.00
2,280.0	11.33	133.66	2,259.5	-155.7	163.1	225.5	0.00	0.00	0.00
2,320.0	11.33	133.66	2,298.7	-161.1	168.8	233.3	0.00	0.00	0.00
2,360.0	11.33	133.66	2,337.9	-166.5	174.5	241.2	0.00	0.00	0.00
2,400.0	11.33	133.66	2,377.2	-171.9	180.2	249.0	0.00	0.00	0.00
2,440.0	11.33	133.66	2,416.4	-177.4	185.8	256.9	0.00	0.00	0.00
2,480.0	11.33	133.66	2,455.6	-182.8	191.5	264.8	0.00	0.00	0.00
2,520.0	11.33	133.66	2,494.8	-188.2	197.2	272.6	0.00	0.00	0.00
2,560.0	11.33	133.66	2,534.0	-193.6	202.9	280.5	0.00	0.00	0.00
2,600.0	11.33	133.66	2,573.3	-199.1	208.6	288.3	0.00	0.00	0.00
2,640.0	11.33	133.66	2,612.5	-204.5	214.3	296.2	0.00	0.00	0.00
2,680.0	11.33	133.66	2,651.7	-209.9	219.9	304.0	0.00	0.00	0.00
2,720.0	11.33	133.66	2,690.9	-215.3	225.6	311.9	0.00	0.00	0.00
2,760.0	11.33	133.66	2,730.1	-220.8	231.3	319.8	0.00	0.00	0.00
2,800.0	11.33	133.66	2,769.4	-226.2	237.0	327.6	0.00	0.00	0.00
2,840.0	11.33	133.66	2,808.6	-231.6	242.7	335.5	0.00	0.00	0.00
2,880.0	11.33	133.66	2,847.8	-237.0	248.4	343.3	0.00	0.00	0.00
2,920.0	11.33	133.66	2,887.0	-242.5	254.1	351.2	0.00	0.00	0.00
2,960.0	11.33	133.66	2,926.2	-247.9	259.7	359.0	0.00	0.00	0.00
3,000.0	11.33	133.66	2,965.5	-253.3	265.4	366.9	0.00	0.00	0.00
3,040.0	11.33	133.66	3,004.7	-258.7	271.1	374.8	0.00	0.00	0.00
3,080.0	11.33	133.66	3,043.9	-264.2	276.8	382.6	0.00	0.00	0.00
3,120.0	11.33	133.66	3,083.1	-269.6	282.5	390.5	0.00	0.00	0.00
3,160.0	11.33	133.66	3,122.3	-275.0	288.2	398.3	0.00	0.00	0.00
3,200.0	11.33	133.66	3,161.6	-280.4	293.8	406.2	0.00	0.00	0.00
3,240.0	11.33	133.66	3,200.8	-285.9	299.5	414.1	0.00	0.00	0.00
3,280.0	11.33	133.66	3,240.0	-291.3	305.2	421.9	0.00	0.00	0.00
3,320.0	11.33	133.66	3,279.2	-296.7	310.9	429.8	0.00	0.00	0.00
3,360.0	11.33	133.66	3,318.4	-302.1	316.6	437.6	0.00	0.00	0.00
3,400.0	11.33	133.66	3,357.7	-307.6	322.3	445.5	0.00	0.00	0.00
3,440.0	11.33	133.66	3,396.9	-313.0	328.0	453.3	0.00	0.00	0.00
3,480.0	11.33	133.66	3,436.1	-318.4	333.6	461.2	0.00	0.00	0.00
3,520.0	11.33	133.66	3,475.3	-323.8	339.3	469.1	0.00	0.00	0.00
3,560.0	11.33	133.66	3,514.5	-329.3	345.0	476.9	0.00	0.00	0.00
3,600.0	11.33	133.66	3,553.8	-334.7	350.7	484.8	0.00	0.00	0.00
3,603.3	11.33	133.66	3,557.0	-335.1	351.2	485.4	0.00	0.00	0.00
PARKMAN									
3,640.0	11.33	133.66	3,593.0	-340.1	356.4	492.6	0.00	0.00	0.00
3,680.0	11.33	133.66	3,632.2	-345.5	362.1	500.5	0.00	0.00	0.00
3,720.0	11.33	133.66	3,671.4	-351.0	367.7	508.3	0.00	0.00	0.00
3,760.0	11.33	133.66	3,710.7	-356.4	373.4	516.2	0.00	0.00	0.00
3,800.0	11.33	133.66	3,749.9	-361.8	379.1	524.1	0.00	0.00	0.00
3,840.0	11.33	133.66	3,789.1	-367.2	384.8	531.9	0.00	0.00	0.00
3,880.0	11.33	133.66	3,828.3	-372.7	390.5	539.8	0.00	0.00	0.00
3,920.0	11.33	133.66	3,867.5	-378.1	396.2	547.6	0.00	0.00	0.00
3,960.0	11.33	133.66	3,906.8	-383.5	401.9	555.5	0.00	0.00	0.00
4,000.0	11.33	133.66	3,946.0	-388.9	407.5	563.4	0.00	0.00	0.00

Database:	Landmark	Local Co-ordinate Reference:	Well Schell 41-6
Company:	Sundance Energy, Weld County, CO	TVD Reference:	WELL @ 4929.0ft (Original Well Elev)
Project:	SEC.6-T3N-R67W	MD Reference:	WELL @ 4929.0ft (Original Well Elev)
Site:	Schell 41-6 Pad Sec.6-T3N-R67W	North Reference:	True
Well:	Schell 41-6	Survey Calculation Method:	Minimum Curvature
Wellbore:	Wellbore #1		
Design:	Plan #3 (4-19-11)		

Planned Survey									
Measured Depth (ft)	Inclination (°)	Azimuth (°)	Vertical Depth (ft)	+N/-S (ft)	+E/-W (ft)	Vertical Section (ft)	Dogleg Rate (°/100ft)	Build Rate (°/100ft)	Turn Rate (°/100ft)
4,040.0	11.33	133.66	3,985.2	-394.4	413.2	571.2	0.00	0.00	0.00
4,080.0	11.33	133.66	4,024.4	-399.8	418.9	579.1	0.00	0.00	0.00
4,120.0	11.33	133.66	4,063.6	-405.2	424.6	586.9	0.00	0.00	0.00
4,160.0	11.33	133.66	4,102.9	-410.6	430.3	594.8	0.00	0.00	0.00
4,200.0	11.33	133.66	4,142.1	-416.1	436.0	602.6	0.00	0.00	0.00
4,224.4	11.33	133.66	4,166.0	-419.4	439.4	607.4	0.00	0.00	0.00
SUSSEX									
4,240.0	11.33	133.66	4,181.3	-421.5	441.6	610.5	0.00	0.00	0.00
4,280.0	11.33	133.66	4,220.5	-426.9	447.3	618.4	0.00	0.00	0.00
4,320.0	11.33	133.66	4,259.7	-432.3	453.0	626.2	0.00	0.00	0.00
4,360.0	11.33	133.66	4,299.0	-437.8	458.7	634.1	0.00	0.00	0.00
4,400.0	11.33	133.66	4,338.2	-443.2	464.4	641.9	0.00	0.00	0.00
4,440.0	11.33	133.66	4,377.4	-448.6	470.1	649.8	0.00	0.00	0.00
4,480.0	11.33	133.66	4,416.6	-454.0	475.7	657.6	0.00	0.00	0.00
4,501.0	11.33	133.66	4,437.2	-456.9	478.7	661.8	0.00	0.00	0.00
4,520.0	10.95	133.66	4,455.9	-459.4	481.4	665.4	2.00	-2.00	0.00
4,560.0	10.15	133.66	4,495.2	-464.5	486.7	672.8	2.00	-2.00	0.00
4,600.0	9.35	133.66	4,534.6	-469.2	491.6	679.5	2.00	-2.00	0.00
4,640.0	8.55	133.66	4,574.1	-473.5	496.1	685.8	2.00	-2.00	0.00
4,656.1	8.23	133.66	4,590.0	-475.1	497.8	688.1	2.00	-2.00	0.00
SHANNON									
4,680.0	7.75	133.66	4,613.7	-477.4	500.2	691.4	2.00	-2.00	0.00
4,720.0	6.95	133.66	4,653.4	-480.9	503.9	696.5	2.00	-2.00	0.00
4,760.0	6.15	133.66	4,693.1	-484.1	507.2	701.1	2.00	-2.00	0.00
4,800.0	5.35	133.66	4,732.9	-486.8	510.1	705.1	2.00	-2.00	0.00
4,840.0	4.55	133.66	4,772.8	-489.2	512.6	708.6	2.00	-2.00	0.00
4,880.0	3.75	133.66	4,812.7	-491.2	514.7	711.5	2.00	-2.00	0.00
4,920.0	2.95	133.66	4,852.6	-492.8	516.4	713.8	2.00	-2.00	0.00
4,960.0	2.15	133.66	4,892.6	-494.0	517.7	715.6	2.00	-2.00	0.00
5,000.0	1.35	133.66	4,932.5	-494.9	518.5	716.8	2.00	-2.00	0.00
5,040.0	0.55	133.66	4,972.5	-495.3	519.0	717.5	2.00	-2.00	0.00
5,067.5	0.00	0.00	5,000.0	-495.4	519.1	717.6	2.00	-2.00	0.00
TARGET BHL 660°FNL, 660°FEL									
5,080.0	0.00	0.00	5,012.5	-495.4	519.1	717.6	0.00	0.00	0.00
5,120.0	0.00	0.00	5,052.5	-495.4	519.1	717.6	0.00	0.00	0.00
5,160.0	0.00	0.00	5,092.5	-495.4	519.1	717.6	0.00	0.00	0.00
5,200.0	0.00	0.00	5,132.5	-495.4	519.1	717.6	0.00	0.00	0.00
5,240.0	0.00	0.00	5,172.5	-495.4	519.1	717.6	0.00	0.00	0.00
5,280.0	0.00	0.00	5,212.5	-495.4	519.1	717.6	0.00	0.00	0.00
5,320.0	0.00	0.00	5,252.5	-495.4	519.1	717.6	0.00	0.00	0.00
5,360.0	0.00	0.00	5,292.5	-495.4	519.1	717.6	0.00	0.00	0.00
5,400.0	0.00	0.00	5,332.5	-495.4	519.1	717.6	0.00	0.00	0.00
5,440.0	0.00	0.00	5,372.5	-495.4	519.1	717.6	0.00	0.00	0.00
5,480.0	0.00	0.00	5,412.5	-495.4	519.1	717.6	0.00	0.00	0.00
5,520.0	0.00	0.00	5,452.5	-495.4	519.1	717.6	0.00	0.00	0.00
5,560.0	0.00	0.00	5,492.5	-495.4	519.1	717.6	0.00	0.00	0.00
5,600.0	0.00	0.00	5,532.5	-495.4	519.1	717.6	0.00	0.00	0.00
5,640.0	0.00	0.00	5,572.5	-495.4	519.1	717.6	0.00	0.00	0.00
5,680.0	0.00	0.00	5,612.5	-495.4	519.1	717.6	0.00	0.00	0.00
5,720.0	0.00	0.00	5,652.5	-495.4	519.1	717.6	0.00	0.00	0.00
5,760.0	0.00	0.00	5,692.5	-495.4	519.1	717.6	0.00	0.00	0.00
5,800.0	0.00	0.00	5,732.5	-495.4	519.1	717.6	0.00	0.00	0.00
5,840.0	0.00	0.00	5,772.5	-495.4	519.1	717.6	0.00	0.00	0.00

Database:	Landmark	Local Co-ordinate Reference:	Well Schell 41-6
Company:	Sundance Energy, Weld County, CO	TVD Reference:	WELL @ 4929.0ft (Original Well Elev)
Project:	SEC.6-T3N-R67W	MD Reference:	WELL @ 4929.0ft (Original Well Elev)
Site:	Schell 41-6 Pad Sec.6-T3N-R67W	North Reference:	True
Well:	Schell 41-6	Survey Calculation Method:	Minimum Curvature
Wellbore:	Wellbore #1		
Design:	Plan #3 (4-19-11)		

Planned Survey									
Measured Depth (ft)	Inclination (°)	Azimuth (°)	Vertical Depth (ft)	+N/-S (ft)	+E/-W (ft)	Vertical Section (ft)	Dogleg Rate (°/100ft)	Build Rate (°/100ft)	Turn Rate (°/100ft)
5,880.0	0.00	0.00	5,812.5	-495.4	519.1	717.6	0.00	0.00	0.00
5,920.0	0.00	0.00	5,852.5	-495.4	519.1	717.6	0.00	0.00	0.00
5,960.0	0.00	0.00	5,892.5	-495.4	519.1	717.6	0.00	0.00	0.00
6,000.0	0.00	0.00	5,932.5	-495.4	519.1	717.6	0.00	0.00	0.00
6,040.0	0.00	0.00	5,972.5	-495.4	519.1	717.6	0.00	0.00	0.00
6,080.0	0.00	0.00	6,012.5	-495.4	519.1	717.6	0.00	0.00	0.00
6,120.0	0.00	0.00	6,052.5	-495.4	519.1	717.6	0.00	0.00	0.00
6,160.0	0.00	0.00	6,092.5	-495.4	519.1	717.6	0.00	0.00	0.00
6,200.0	0.00	0.00	6,132.5	-495.4	519.1	717.6	0.00	0.00	0.00
6,240.0	0.00	0.00	6,172.5	-495.4	519.1	717.6	0.00	0.00	0.00
6,280.0	0.00	0.00	6,212.5	-495.4	519.1	717.6	0.00	0.00	0.00
6,320.0	0.00	0.00	6,252.5	-495.4	519.1	717.6	0.00	0.00	0.00
6,360.0	0.00	0.00	6,292.5	-495.4	519.1	717.6	0.00	0.00	0.00
6,400.0	0.00	0.00	6,332.5	-495.4	519.1	717.6	0.00	0.00	0.00
6,440.0	0.00	0.00	6,372.5	-495.4	519.1	717.6	0.00	0.00	0.00
6,480.0	0.00	0.00	6,412.5	-495.4	519.1	717.6	0.00	0.00	0.00
6,520.0	0.00	0.00	6,452.5	-495.4	519.1	717.6	0.00	0.00	0.00
6,560.0	0.00	0.00	6,492.5	-495.4	519.1	717.6	0.00	0.00	0.00
6,600.0	0.00	0.00	6,532.5	-495.4	519.1	717.6	0.00	0.00	0.00
6,640.0	0.00	0.00	6,572.5	-495.4	519.1	717.6	0.00	0.00	0.00
6,680.0	0.00	0.00	6,612.5	-495.4	519.1	717.6	0.00	0.00	0.00
6,720.0	0.00	0.00	6,652.5	-495.4	519.1	717.6	0.00	0.00	0.00
6,760.0	0.00	0.00	6,692.5	-495.4	519.1	717.6	0.00	0.00	0.00
6,800.0	0.00	0.00	6,732.5	-495.4	519.1	717.6	0.00	0.00	0.00
6,840.0	0.00	0.00	6,772.5	-495.4	519.1	717.6	0.00	0.00	0.00
6,880.0	0.00	0.00	6,812.5	-495.4	519.1	717.6	0.00	0.00	0.00
6,920.0	0.00	0.00	6,852.5	-495.4	519.1	717.6	0.00	0.00	0.00
6,960.0	0.00	0.00	6,892.5	-495.4	519.1	717.6	0.00	0.00	0.00
6,980.5	0.00	0.00	6,913.0	-495.4	519.1	717.6	0.00	0.00	0.00
NIORARA - LEGAL BOX 400' X 400' 681'FNL, 625'FEL									
7,000.0	0.00	0.00	6,932.5	-495.4	519.1	717.6	0.00	0.00	0.00
7,040.0	0.00	0.00	6,972.5	-495.4	519.1	717.6	0.00	0.00	0.00
7,080.0	0.00	0.00	7,012.5	-495.4	519.1	717.6	0.00	0.00	0.00
7,120.0	0.00	0.00	7,052.5	-495.4	519.1	717.6	0.00	0.00	0.00
7,160.0	0.00	0.00	7,092.5	-495.4	519.1	717.6	0.00	0.00	0.00
7,200.0	0.00	0.00	7,132.5	-495.4	519.1	717.6	0.00	0.00	0.00
7,240.0	0.00	0.00	7,172.5	-495.4	519.1	717.6	0.00	0.00	0.00
7,280.0	0.00	0.00	7,212.5	-495.4	519.1	717.6	0.00	0.00	0.00
7,313.5	0.00	0.00	7,246.0	-495.4	519.1	717.6	0.00	0.00	0.00
CODELL									
7,320.0	0.00	0.00	7,252.5	-495.4	519.1	717.6	0.00	0.00	0.00
7,360.0	0.00	0.00	7,292.5	-495.4	519.1	717.6	0.00	0.00	0.00
7,400.0	0.00	0.00	7,332.5	-495.4	519.1	717.6	0.00	0.00	0.00
7,440.0	0.00	0.00	7,372.5	-495.4	519.1	717.6	0.00	0.00	0.00
7,463.5	0.00	0.00	7,396.0	-495.4	519.1	717.6	0.00	0.00	0.00

Database:	Landmark	Local Co-ordinate Reference:	Well Schell 41-6
Company:	Sundance Energy, Weld County, CO	TVD Reference:	WELL @ 4929.0ft (Original Well Elev)
Project:	SEC.6-T3N-R67W	MD Reference:	WELL @ 4929.0ft (Original Well Elev)
Site:	Schell 41-6 Pad Sec.6-T3N-R67W	North Reference:	True
Well:	Schell 41-6	Survey Calculation Method:	Minimum Curvature
Wellbore:	Wellbore #1		
Design:	Plan #3 (4-19-11)		

Targets									
Target Name									
- hit/miss target	Dip Angle (°)	Dip Dir. (°)	TVD (ft)	+N/-S (ft)	+E/-W (ft)	Northing (ft)	Easting (ft)	Latitude	Longitude
- Shape									
TARGET BHL 660'FN	0.00	0.00	5,000.0	-495.4	519.1	1,338,370.02	3,160,278.59	40.260800	-104.925690
- plan hits target center									
- Point									
LEGAL BOX 400' X 400'	0.00	0.00	6,913.0	-516.4	554.1	1,338,349.28	3,160,313.70	40.260742	-104.925565
- plan misses target center by 40.8ft at 6980.5ft MD (6913.0 TVD, -495.4 N, 519.1 E)									
- Rectangle (sides W400.0 H400.0 D483.0)									

Casing Points					
Measured Depth (ft)	Vertical Depth (ft)	Name	Casing Diameter (")	Hole Diameter (")	
650.0	650.0	8 5/8"	8-5/8	12-1/4	

Formations						
Measured Depth (ft)	Vertical Depth (ft)	Name	Lithology	Dip (°)	Dip Direction (°)	
3,603.3	3,557.0	PARKMAN		0.00		
4,224.4	4,166.0	SUSSEX		0.00		
4,656.1	4,590.0	SHANNON		0.00		
6,980.5	6,913.0	NIOBRARA		0.00		
7,313.5	7,246.0	CODELL		0.00		
	7,698.0	J-SAND		0.00		



Directional

Sundance Energy, Weld County, CO

SEC.6-T3N-R67W

Schell 41-6 Pad Sec.6-T3N-R67W

Schell 41-6

Wellbore #1

Plan #3 (4-19-11)

Anticollision Report

19 April, 2011

Company:	Sundance Energy, Weld County, CO	Local Co-ordinate Reference:	Well Schell 41-6
Project:	SEC.6-T3N-R67W	TVD Reference:	WELL @ 4929.0ft (Original Well Elev)
Reference Site:	Schell 41-6 Pad Sec.6-T3N-R67W	MD Reference:	WELL @ 4929.0ft (Original Well Elev)
Site Error:	0.0ft	North Reference:	True
Reference Well:	Schell 41-6	Survey Calculation Method:	Minimum Curvature
Well Error:	0.0ft	Output errors are at	2.00 sigma
Reference Wellbore	Wellbore #1	Database:	Landmark
Reference Design:	Plan #3 (4-19-11)	Offset TVD Reference:	Offset Datum

Reference	Plan #3 (4-19-11)		
Filter type:	NO GLOBAL FILTER: Using user defined selection & filtering criteria		
Interpolation Method:	Stations	Error Model:	ISCWSA
Depth Range:	Unlimited	Scan Method:	Closest Approach 3D
Results Limited by:	Maximum center-center distance of 10,000.0ft	Error Surface:	Elliptical Conic
Warning Levels Evaluated at:	2.00 Sigma		

Survey Tool Program	Date 4/19/2011			
From (ft)	To (ft)	Survey (Wellbore)	Tool Name	Description
0.0	7,463.5	Plan #3 (4-19-11) (Wellbore #1)	MWD	MWD - Standard

Summary						
Site Name	Reference Measured Depth (ft)	Offset Measured Depth (ft)	Distance Between Centres (ft)	Distance Between Ellipses (ft)	Separation Factor	Warning
Offset Well - Wellbore - Design						
Schell 41-6 Pad Sec.6-T3N-R67W						
Schell 42-6 - Wellbore #1 - Plan #3 (4-19-11)	200.0	200.0	14.6	13.9	21.611	CC, ES
Schell 42-6 - Wellbore #1 - Plan #3 (4-19-11)	400.0	398.7	21.3	19.8	13.917	SF

Offset Design Schell 41-6 Pad Sec.6-T3N-R67W - Schell 42-6 - Wellbore #1 - Plan #3 (4-19-11)												Offset Site Error:	0.0 ft
Survey Program: 0-MWD												Offset Well Error:	0.0 ft
Reference		Offset		Semi Major Axis			Distance						
Measured Depth (ft)	Vertical Depth (ft)	Measured Depth (ft)	Vertical Depth (ft)	Reference (ft)	Offset (ft)	Highside Toolface (°)	Offset Wellbore Centre +N/-S (ft)	+E/-W (ft)	Between Centres (ft)	Between Ellipses (ft)	Minimum Separation (ft)	Separation Factor	Warning
0.0	0.0	0.0	0.0	0.0	0.0	180.00	-14.6	0.0	14.6	14.6	0.00	N/A	
100.0	100.0	100.0	100.0	0.1	0.1	180.00	-14.6	0.0	14.6	14.3	0.22	64.832	
200.0	200.0	200.0	200.0	0.3	0.3	180.00	-14.6	0.0	14.6	13.9	0.67	21.611 CC, ES	
300.0	300.0	299.5	299.5	0.6	0.5	178.31	-16.2	0.5	16.2	15.1	1.10	14.766	
400.0	400.0	398.7	398.5	0.8	0.7	174.85	-21.2	1.9	21.3	19.8	1.53	13.917 SF	
500.0	500.0	497.5	496.9	1.0	1.0	171.72	-29.4	4.3	29.9	27.9	1.99	14.990	
600.0	600.0	595.5	594.3	1.2	1.3	169.50	-40.8	7.6	41.9	39.4	2.48	16.888	
700.0	700.0	692.7	690.2	1.5	1.6	168.02	-55.2	11.7	57.2	54.3	2.99	19.140	
800.0	800.0	788.7	784.5	1.7	2.0	167.02	-72.5	16.7	76.0	72.4	3.53	21.515	
850.0	850.0	836.2	831.0	1.8	2.2	166.65	-82.2	19.5	86.6	82.8	3.81	22.697	
900.0	900.0	883.4	877.0	1.9	2.4	32.69	-92.5	22.5	97.6	93.8	3.82	25.522	
1,000.0	999.9	977.3	967.8	2.1	2.8	32.81	-115.3	29.1	120.0	115.7	4.25	28.213	
1,100.0	1,099.7	1,070.4	1,057.1	2.3	3.4	33.50	-140.7	36.4	142.6	137.9	4.70	30.354	
1,200.0	1,199.1	1,162.7	1,144.7	2.5	3.9	34.49	-168.5	44.4	165.7	160.5	5.17	32.047	
1,300.0	1,298.2	1,254.2	1,230.6	2.8	4.5	35.66	-198.8	53.2	189.2	183.5	5.67	33.347	
1,400.0	1,396.6	1,347.1	1,316.8	3.0	5.2	36.98	-232.1	62.8	212.9	206.7	6.21	34.259	
1,416.5	1,412.8	1,363.1	1,331.6	3.1	5.3	37.23	-237.9	64.4	216.7	210.3	6.31	34.349	
1,500.0	1,494.7	1,444.2	1,406.7	3.4	5.9	38.60	-267.5	73.0	235.7	228.9	6.82	34.535	
1,600.0	1,592.7	1,541.4	1,496.6	3.7	6.6	39.98	-302.9	83.2	258.6	251.1	7.47	34.637	
1,700.0	1,690.8	1,638.6	1,586.5	4.1	7.4	41.13	-338.3	93.4	281.6	273.5	8.13	34.631	
1,800.0	1,788.8	1,735.7	1,676.4	4.5	8.1	42.11	-373.7	103.6	304.8	295.9	8.82	34.553	
1,900.0	1,886.9	1,832.9	1,766.3	4.9	8.9	42.95	-409.1	113.8	328.0	318.4	9.53	34.433	
2,000.0	1,984.9	1,930.1	1,856.2	5.3	9.6	43.68	-444.5	124.0	351.2	341.0	10.24	34.286	
2,100.0	2,083.0	2,027.2	1,946.1	5.7	10.3	44.32	-479.9	134.2	374.5	363.6	10.98	34.127	
2,200.0	2,181.0	2,124.4	2,036.1	6.1	11.1	44.89	-515.3	144.4	397.9	386.2	11.72	33.961	

CC - Min centre to center distance or convergent point, SF - min separation factor, ES - min ellipse separation

Company:	Sundance Energy, Weld County, CO	Local Co-ordinate Reference:	Well Schell 41-6
Project:	SEC.6-T3N-R67W	TVD Reference:	WELL @ 4929.0ft (Original Well Elev)
Reference Site:	Schell 41-6 Pad Sec.6-T3N-R67W	MD Reference:	WELL @ 4929.0ft (Original Well Elev)
Site Error:	0.0ft	North Reference:	True
Reference Well:	Schell 41-6	Survey Calculation Method:	Minimum Curvature
Well Error:	0.0ft	Output errors are at	2.00 sigma
Reference Wellbore	Wellbore #1	Database:	Landmark
Reference Design:	Plan #3 (4-19-11)	Offset TVD Reference:	Offset Datum

Offset Design												Offset Site Error:	0.0ft
Survey Program: 0-MWD												Offset Well Error:	0.0ft
Reference		Offset		Semi Major Axis			Distance						Warning
Measured Depth (ft)	Vertical Depth (ft)	Measured Depth (ft)	Vertical Depth (ft)	Reference (ft)	Offset (ft)	Highside Toolface (°)	Offset Wellbore Centre +N/-S (ft)	+E/-W (ft)	Between Centres (ft)	Between Ellipses (ft)	Minimum Separation (ft)	Separation Factor	
2,300.0	2,279.1	2,221.6	2,126.0	6.6	11.8	45.39	-550.7	154.6	421.3	408.8	12.47	33.796	
2,400.0	2,377.2	2,318.7	2,215.9	7.0	12.6	45.84	-586.1	164.9	444.7	431.5	13.22	33.633	
2,500.0	2,475.2	2,415.9	2,305.8	7.4	13.3	46.25	-621.4	175.1	468.1	454.1	13.98	33.475	
2,600.0	2,573.3	2,513.1	2,395.7	7.8	14.0	46.61	-656.8	185.3	491.6	476.8	14.75	33.323	
2,700.0	2,671.3	2,610.2	2,485.6	8.3	14.8	46.94	-692.2	195.5	515.0	499.5	15.52	33.178	
2,800.0	2,769.4	2,707.4	2,575.5	8.7	15.5	47.25	-727.6	205.7	538.5	522.2	16.30	33.040	
2,900.0	2,867.4	2,804.6	2,665.4	9.1	16.3	47.53	-763.0	215.9	562.0	544.9	17.08	32.908	
3,000.0	2,965.5	2,901.7	2,755.4	9.6	17.0	47.78	-798.4	226.1	585.5	567.6	17.86	32.783	
3,100.0	3,063.5	2,998.9	2,845.3	10.0	17.8	48.02	-833.8	236.3	609.0	590.4	18.65	32.664	
3,200.0	3,161.6	3,096.1	2,935.2	10.4	18.5	48.24	-869.2	246.5	632.5	613.1	19.43	32.552	
3,300.0	3,259.6	3,193.2	3,025.1	10.9	19.3	48.44	-904.6	256.7	656.1	635.9	20.22	32.445	
3,400.0	3,357.7	3,290.4	3,115.0	11.3	20.0	48.63	-940.0	267.0	679.6	658.6	21.01	32.344	
3,500.0	3,455.7	3,387.6	3,204.9	11.8	20.8	48.81	-975.4	277.2	703.2	681.4	21.81	32.248	
3,600.0	3,553.8	3,484.7	3,294.8	12.2	21.5	48.97	-1,010.8	287.4	726.7	704.1	22.60	32.156	
3,700.0	3,651.8	3,581.9	3,384.7	12.6	22.3	49.13	-1,046.2	297.6	750.3	726.9	23.40	32.070	
3,800.0	3,749.9	3,679.1	3,474.7	13.1	23.0	49.27	-1,081.6	307.8	773.9	749.7	24.19	31.987	
3,900.0	3,847.9	3,776.2	3,564.6	13.5	23.8	49.41	-1,116.9	318.0	797.4	772.4	24.99	31.909	
4,000.0	3,946.0	3,873.4	3,654.5	14.0	24.5	49.54	-1,152.3	328.2	821.0	795.2	25.79	31.834	
4,100.0	4,044.0	3,970.6	3,744.4	14.4	25.2	49.66	-1,187.7	338.4	844.6	818.0	26.59	31.763	
4,200.0	4,142.1	4,067.7	3,834.3	14.8	26.0	49.77	-1,223.1	348.6	868.2	840.8	27.39	31.695	
4,300.0	4,240.1	4,164.9	3,924.2	15.3	26.7	49.88	-1,258.5	358.8	891.7	863.5	28.19	31.631	
4,400.0	4,338.2	4,262.1	4,014.1	15.7	27.5	49.98	-1,293.9	369.1	915.3	886.3	28.99	31.569	
4,501.0	4,437.2	4,360.2	4,104.9	16.2	28.2	50.08	-1,329.7	379.4	939.1	909.3	29.81	31.509	
4,600.0	4,534.6	4,456.1	4,193.7	16.5	29.0	50.48	-1,364.6	389.4	963.6	933.0	30.57	31.521	
4,700.0	4,633.5	4,552.4	4,282.8	16.8	29.7	50.76	-1,399.7	399.6	990.4	959.1	31.23	31.713	
4,800.0	4,732.9	4,648.0	4,371.3	17.0	30.5	50.93	-1,434.5	409.6	1,019.3	987.5	31.82	32.036	
4,900.0	4,832.6	4,742.8	4,459.0	17.2	31.2	51.01	-1,469.0	419.6	1,050.4	1,018.0	32.34	32.483	
5,000.0	4,932.5	4,836.6	4,545.8	17.4	31.9	51.00	-1,503.2	429.4	1,083.6	1,050.8	32.79	33.050	
5,067.5	5,000.0	4,899.3	4,603.8	17.5	32.4	-175.39	-1,526.0	436.0	1,107.2	1,074.2	33.06	33.494	
5,100.0	5,032.5	4,929.4	4,631.6	17.5	32.6	-175.61	-1,537.0	439.2	1,118.9	1,085.7	33.15	33.757	
5,200.0	5,132.5	5,021.9	4,717.2	17.6	33.3	-176.26	-1,570.7	448.9	1,154.8	1,121.4	33.42	34.553	
5,300.0	5,232.5	5,114.4	4,802.9	17.7	34.1	-176.88	-1,604.4	458.6	1,190.8	1,157.1	33.71	35.327	
5,400.0	5,332.5	5,262.6	4,941.2	17.9	34.9	-177.74	-1,655.5	473.3	1,225.1	1,191.1	34.04	35.988	
5,500.0	5,432.5	5,424.8	5,095.5	18.0	35.7	-178.49	-1,703.5	487.2	1,254.6	1,220.2	34.39	36.475	
5,600.0	5,532.5	5,592.7	5,257.9	18.1	36.4	-179.07	-1,744.2	498.9	1,278.7	1,244.0	34.77	36.773	
5,700.0	5,632.5	5,765.1	5,427.0	18.3	36.9	-179.51	-1,776.4	508.2	1,297.4	1,262.3	35.16	36.898	
5,800.0	5,732.5	5,941.1	5,601.3	18.4	37.3	-179.81	-1,799.2	514.8	1,310.4	1,274.8	35.55	36.858	
5,900.0	5,832.5	6,119.4	5,779.1	18.5	37.6	-179.97	-1,811.8	518.4	1,317.4	1,281.5	35.93	36.664	
6,000.0	5,932.5	6,272.8	5,932.5	18.7	37.7	180.00	-1,814.2	519.1	1,318.8	1,282.5	36.28	36.353	
6,100.0	6,032.5	6,372.8	6,032.5	18.8	37.8	180.00	-1,814.2	519.1	1,318.8	1,282.2	36.55	36.078	
6,200.0	6,132.5	6,472.8	6,132.5	18.9	37.8	180.00	-1,814.2	519.1	1,318.8	1,281.9	36.83	35.805	
6,300.0	6,232.5	6,572.8	6,232.5	19.1	37.9	180.00	-1,814.2	519.1	1,318.8	1,281.7	37.11	35.534	
6,400.0	6,332.5	6,672.8	6,332.5	19.2	38.0	180.00	-1,814.2	519.1	1,318.8	1,281.4	37.40	35.264	
6,500.0	6,432.5	6,772.8	6,432.5	19.4	38.0	180.00	-1,814.2	519.1	1,318.8	1,281.1	37.69	34.994	
6,600.0	6,532.5	6,872.8	6,532.5	19.5	38.1	180.00	-1,814.2	519.1	1,318.8	1,280.8	37.98	34.727	
6,700.0	6,632.5	6,972.8	6,632.5	19.7	38.2	180.00	-1,814.2	519.1	1,318.8	1,280.5	38.27	34.460	
6,800.0	6,732.5	7,072.8	6,732.5	19.8	38.2	180.00	-1,814.2	519.1	1,318.8	1,280.2	38.57	34.195	
6,900.0	6,832.5	7,172.8	6,832.5	20.0	38.3	180.00	-1,814.2	519.1	1,318.8	1,279.9	38.87	33.932	
7,000.0	6,932.5	7,272.8	6,932.5	20.1	38.4	180.00	-1,814.2	519.1	1,318.8	1,279.6	39.17	33.670	
7,100.0	7,032.5	7,372.8	7,032.5	20.3	38.4	180.00	-1,814.2	519.1	1,318.8	1,279.3	39.47	33.410	
7,200.0	7,132.5	7,472.8	7,132.5	20.4	38.5	180.00	-1,814.2	519.1	1,318.8	1,279.0	39.78	33.151	
7,300.0	7,232.5	7,572.8	7,232.5	20.6	38.6	180.00	-1,814.2	519.1	1,318.8	1,278.7	40.09	32.895	

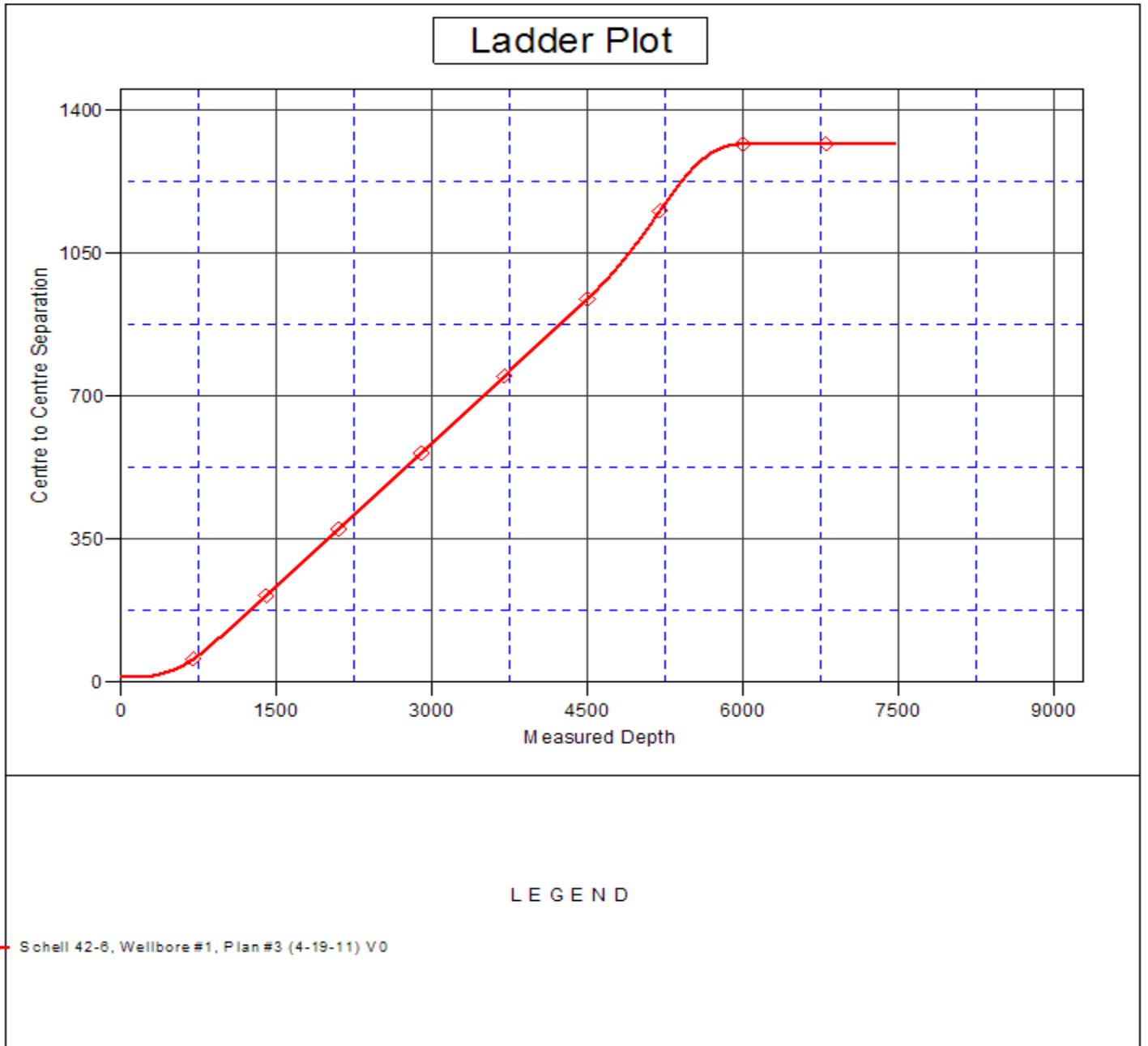
CC - Min centre to center distance or convergent point, SF - min separation factor, ES - min ellipse separation

Company:	Sundance Energy, Weld County, CO	Local Co-ordinate Reference:	Well Schell 41-6
Project:	SEC.6-T3N-R67W	TVD Reference:	WELL @ 4929.0ft (Original Well Elev)
Reference Site:	Schell 41-6 Pad Sec.6-T3N-R67W	MD Reference:	WELL @ 4929.0ft (Original Well Elev)
Site Error:	0.0ft	North Reference:	True
Reference Well:	Schell 41-6	Survey Calculation Method:	Minimum Curvature
Well Error:	0.0ft	Output errors are at	2.00 sigma
Reference Wellbore	Wellbore #1	Database:	Landmark
Reference Design:	Plan #3 (4-19-11)	Offset TVD Reference:	Offset Datum

Offset Design Schell 41-6 Pad Sec.6-T3N-R67W - Schell 42-6 - Wellbore #1 - Plan #3 (4-19-11)												Offset Site Error:	0.0 ft
Survey Program: 0-MWD												Offset Well Error:	0.0 ft
Reference	Offset	Semi Major Axis		Distance									
Measured Depth (ft)	Vertical Depth (ft)	Measured Depth (ft)	Vertical Depth (ft)	Reference (ft)	Offset (ft)	Highside Toolface (°)	Offset Wellbore Centre +N/-S (ft)	+E/-W (ft)	Between Centres (ft)	Between Ellipses (ft)	Minimum Separation (ft)	Separation Factor	Warning
7,400.0	7,332.5	7,672.8	7,332.5	20.7	38.7	180.00	-1,814.2	519.1	1,318.8	1,278.4	40.40	32.640	
7,463.5	7,396.0	7,736.3	7,396.0	20.8	38.7	180.00	-1,814.2	519.1	1,318.8	1,278.2	40.60	32.479	

Company:	Sundance Energy, Weld County, CO	Local Co-ordinate Reference:	Well Schell 41-6
Project:	SEC.6-T3N-R67W	TVD Reference:	WELL @ 4929.0ft (Original Well Elev)
Reference Site:	Schell 41-6 Pad Sec.6-T3N-R67W	MD Reference:	WELL @ 4929.0ft (Original Well Elev)
Site Error:	0.0ft	North Reference:	True
Reference Well:	Schell 41-6	Survey Calculation Method:	Minimum Curvature
Well Error:	0.0ft	Output errors are at	2.00 sigma
Reference Wellbore	Wellbore #1	Database:	Landmark
Reference Design:	Plan #3 (4-19-11)	Offset TVD Reference:	Offset Datum

Reference Depths are relative to WELL @ 4929.0ft (Original Well Elev) Coordinates are relative to: Schell 41-6
Offset Depths are relative to Offset Datum Coordinate System is US State Plane 1983, Colorado Northern Zone
Central Meridian is -105.500000 ° Grid Convergence at Surface is: 0.37°



Company:	Sundance Energy, Weld County, CO	Local Co-ordinate Reference:	Well Schell 41-6
Project:	SEC.6-T3N-R67W	TVD Reference:	WELL @ 4929.0ft (Original Well Elev)
Reference Site:	Schell 41-6 Pad Sec.6-T3N-R67W	MD Reference:	WELL @ 4929.0ft (Original Well Elev)
Site Error:	0.0ft	North Reference:	True
Reference Well:	Schell 41-6	Survey Calculation Method:	Minimum Curvature
Well Error:	0.0ft	Output errors are at	2.00 sigma
Reference Wellbore	Wellbore #1	Database:	Landmark
Reference Design:	Plan #3 (4-19-11)	Offset TVD Reference:	Offset Datum

Reference Depths are relative to WELL @ 4929.0ft (Original Well Elev) Coordinates are relative to: Schell 41-6
Offset Depths are relative to Offset Datum Coordinate System is US State Plane 1983, Colorado Northern Zone
Central Meridian is -105.500000 ° Grid Convergence at Surface is: 0.37°

