

PETROLEUM DEVELOPMENT CORP Weld County CO

Well Name: **Brown 13-2H**

Surface Location: Brown 13-2H Pad Sec.2-T6N-R63W
North American Datum 1983 , US State Plane 1983 , Colorado Northern Zone

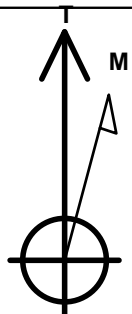
Ground Elevation: 4740.0

+N/-S	+E/-W	Northing	Easting	Latitude	Longitude	Slot
0.0	0.0	1431435.08	3302386.04	40.512600	-104.412440	

Original Well Elev WELL @ 4754.0ft (Original Well Elev)

WELLBORE TARGET DETAILS

Name	TVD	+N/-S	+E/-W	Shape
HARDLINE BHL 460'FEL	1.0	-575.0	4535.6	Polygon
HARDLINE SHL 460'FWL	1.0	-400.0	251.0	Polygon
BHL 1313'FSL, 501'FEL	6569.0	-175.0	4494.6	Point



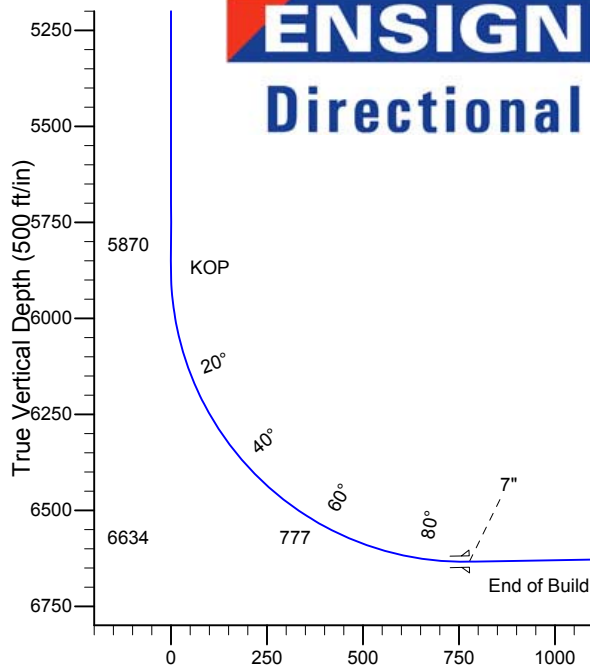
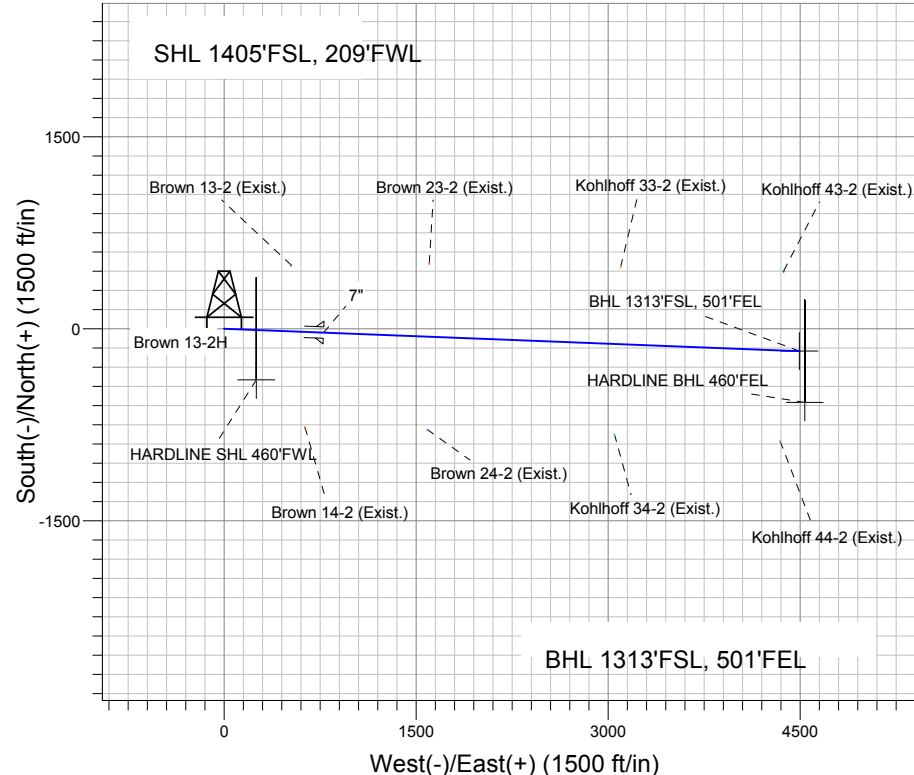
Azimuths to True North
Magnetic North: 8.69°

Magnetic Field
Strength: 53289.9srT
Dip Angle: 67.22°
Date: 1/25/2011
Model: IGRF200510

Brown 13-2H Pad Sec.2-T6N-R63W
Brown 13-2H
Plan #1 (1-25-11)
18:05, February 07 2011

ANNOTATIONS

TVD	MD	Annotation
5870.1	5870.1	KOP
6633.9	7083.5	End of Build



SECTION DETAILS

Sec	MD	Inc	Azi	TVD	+N/-S	+E/-W	DLeg	TFace	VSec	Target
1	0.0	0.00	0.00	0.0	0.0	0.0	0.00	0.00	0.0	
2	5870.1	0.00	0.00	5870.1	0.0	0.0	0.00	0.00	0.0	
3	7083.5	91.00	92.23	6633.9	-30.2	776.7	7.50	92.23	777.3	
4	10804.7	91.00	92.23	6569.0	-175.0	4494.6	0.00	0.00	4498.0	BHL 1313'FSL, 501'FEL

BHL 1313'FSL, 501'FEL

Vertical Section at 92.23° (500 ft/in)