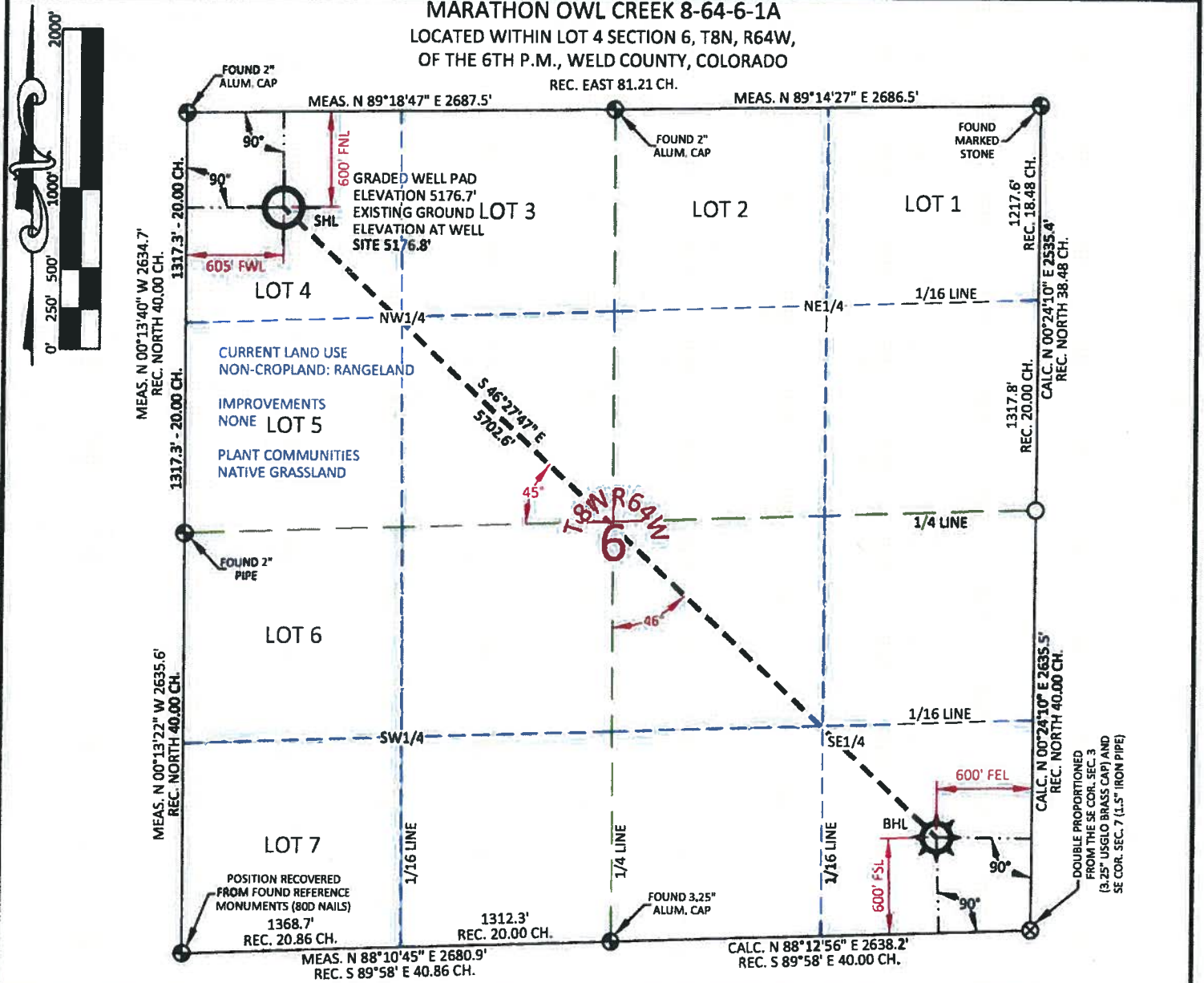


MARATHON OWL CREEK 8-64-6-1A
 LOCATED WITHIN LOT 4 SECTION 6, T8N, R64W,
 OF THE 6TH P.M., WELD COUNTY, COLORADO



SURFACE HOLE LOCATION	
COORDINATE	40.694336°
LONGITUDE	104.598600°
COORDINATE	40.694355°
LONGITUDE	104.598084°
COORDINATE	40°41'39.61"
LONGITUDE	104°35'54.96"
COORDINATE	40°41'39.68"
LONGITUDE	104°35'53.10"
NORTH	1497060.40
EAST	3249954.88
NORTH	497060.10
EAST	2250104.74
FOOTAGE: 605' FWL - 600' FNL	
MEASURE DATE	03/23/2011
INSTRUMENT OPERATOR	ALLEN BLATTEL
PDOP	1.9
SHL GRND ELEV.	5176.8'

BOTTOM HOLE LOCATION	
COORDINATE	40.683438°
LONGITUDE	104.583839°
COORDINATE	40.683457°
LONGITUDE	104.583324°
COORDINATE	40°41'00.38"
LONGITUDE	104°35'01.82"
COORDINATE	40°41'00.45"
LONGITUDE	104°34'59.97"
NORTH	1493132.36
EAST	3254088.83
NORTH	493132.14
EAST	2254238.61
FOOTAGE: 600' FEL - 600' FSL	

I, William H. Dolinar, Professional Land Surveyor, CO. RLS # 38070 hereby certify that (in accordance with a request from Anna Walls with Marathon Oil Co, 5555 San Felipe, Houston, TX 77056) I and or personnel under my direction made a survey on the 23th day of March 2011, for the Surface Hole Location and Elevation of Marathon Oil Co. OWL CREEK 8-64-6-1A being located within Lot 4, Section 6, T8N, R64W, and the Bottom Hole Location being located in the SE1/4 SE1/4 of Section 6, T8N, R64W, both being of the 6th P.M., Weld County, State of Colorado.

- All bearings and distances are GRID, based on the Colorado State Plane Coordinate System, North Zone, North American Datum 1983 from GPS observations occupying a WHS control point (5/8" rebar) and having the Location and Elevation derived from an Opus Solution.
- Vertical Datum used is of NAVD 88.
- Record Bearings and Distances as shown are based on the General Land Office Survey plat approved on the 20th day of October 1870.



CONFIDENTIALITY NOTES:
 The information contained in this plat is legally privileged and confidential information intended only for the use of the recipients. If you are not the intended recipients, you are hereby notified that any use, dissemination, distribution or copying of this information is strictly prohibited.

WILLIAM H. SMITH & ASSOCIATES P.C.
 SURVEYING CONSULTANTS
 50 EAST SECOND NORTH GREEN RIVER, WY
 PHONE: 307-875-3638
 307-875-3639
 www.whsmithpc.com

DRAWN BY: DTW	CHECKED BY: WHD
PROJECT NO: 86461A	JOB NO: 2011001
REVISIONS:	

LEGEND	
●	FOUND CORNER
⊗	CALCULATED CORNER
○	NOTHING FOUND

LOCATION:
 OWL CREEK
 8-64-6-1A
 WITHIN LOT 4 OF
 SECTION 6,
 T 8 N, R 64 W,
 6TH PM.
 WELD COUNTY,
 COLORADO

MARATHON OIL COMPANY
 PO BOX 3128, HOUSTON TX, 77253
 5555 SAN FELIPE, HOUSTON TX, 77056

WELL LOCATION PLAT	
SCALE: 1"=1000'	EXHIBIT "A"
DATE: 03/28/2011	SHEET 1 OF 1