

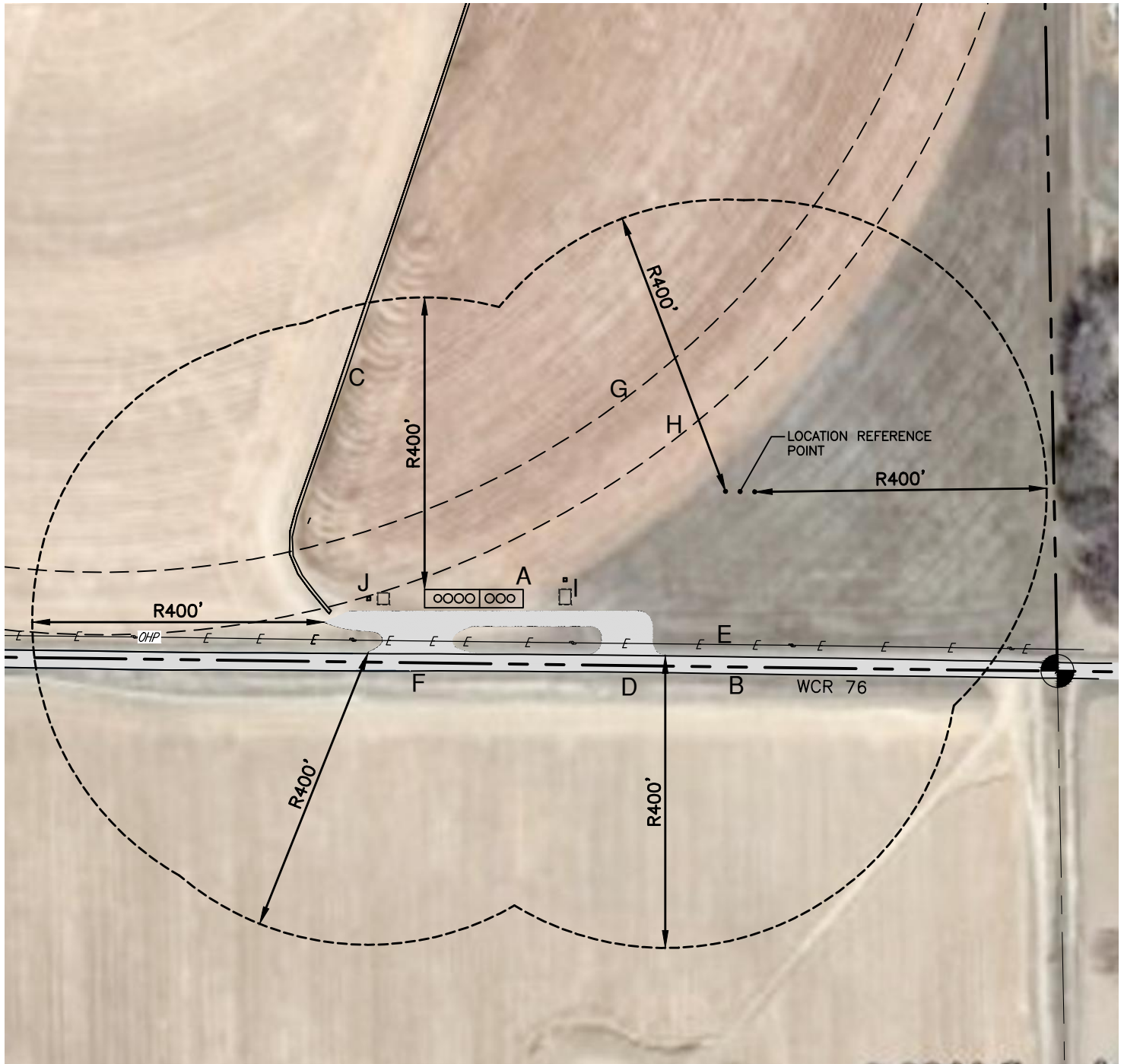
VISIBLE IMPROVEMENTS

ALL DISTANCES AND BEARINGS SHOWN ARE FROM THE LOCATION REFERENCE POINT.

- A. TANK BATTERY - 326' SW
- B. WCR 76 - 226' S
- C. CONCRETE IRRIGATION DITCH - 563' NW
- D. ACCESS ROAD - 275' SW
- E. ELECTRIC SERVICE LINE - 210' S
- F. ACCESS ROAD - 489' SW
- G. CENTRAL PIVOT WHEEL TRACK - 197' NW
- H. END OF CENTRAL PIVOT ARM - 112' NW
- I. SEPARATOR - 268' SW
- J. SEPARATOR - 501' SW

LOCATION

SW1/4 SEC 32, T7N, R65W



LAMP RYNEARSON
& ASSOCIATES

4715 Innovation Drive
Fort Collins, CO 80525
www.LRA-Inc.com
970.226.0342 | P
970.226.0879 | F

EATON FIELD #2
LOCATION
DRAWING

drawn by: EKM
designer: EKM
job number-tasks: 0210045.00
date: 4/13/2011
scale: 1" = 200'
file name: