

Schlumberger

Company: **Vecta Oil & Gas Ltd**

Well: **Cottonwood Grazing 3-22**

Field: **Wildcat**

County: **Lincoln**

State: **Colorado**

Schlumberger

Company: **Vecta Oil & Gas Ltd**

Well: **Cottonwood Grazing 3-22**

Field: **Wildcat**

County: **Lincoln**

State: **Colorado**

Schlumberger

Company: **Vecta Oil & Gas Ltd**

Well: **Cottonwood Grazing 3-22**

Field: **Wildcat**

County: **Lincoln**

State: **Colorado**

Schlumberger

Company: **Vecta Oil & Gas Ltd**

Well: **Cottonwood Grazing 3-22**

Field: **Wildcat**

County: **Lincoln**

State: **Colorado**

Schlumberger

Company: Vecta Oil & Gas Ltd

Well: Cottonwood Grazing 3-22

Field: Wildcat

County: Lincoln

State: Colorado

Schlumberger

Company: Vecta Oil & Gas Ltd

Well: Cottonwood Grazing 3-22

Field: Wildcat

County: Lincoln

State: Colorado

[illegible]

Logging Date			
Run Number			
Depth Driller			
Schlumberger Depth			
Bottom Log Interval			
Top Log Interval			
Casing Driller Size @ Depth		@	
Casing Schlumberger			
Bit Size			
Type Fluid In Hole			
Density	Viscosity		
Fluid Loss	PH		
Source Of Sample			
RM @ Measured Temperature		@	
RMF @ Measured Temperature		@	
RMC @ Measured Temperature		@	
Source RMF	RMC		
RM @ MRT	RMF @ MRT	@	@
Maximum Recorded Temperatures			
Circulation Stopped	Time		
Logger On Bottom	Time		
Unit Number	Location		
Recorded By			
Witnessed By			

OTHER SERVICES1	OTHER SERVICES2
OS1:	OS1:
OS2:	OS2:
OS3:	OS3:
OS4:	OS4:
OS5:	OS5:
REMARKS: RUN NUMBER 1	REMARKS: RUN NUMBER 2
This is the first run in the hole.	
Toolstring run as per tool sketch.	
Matrix: Limestone (2.71 g/cc)	

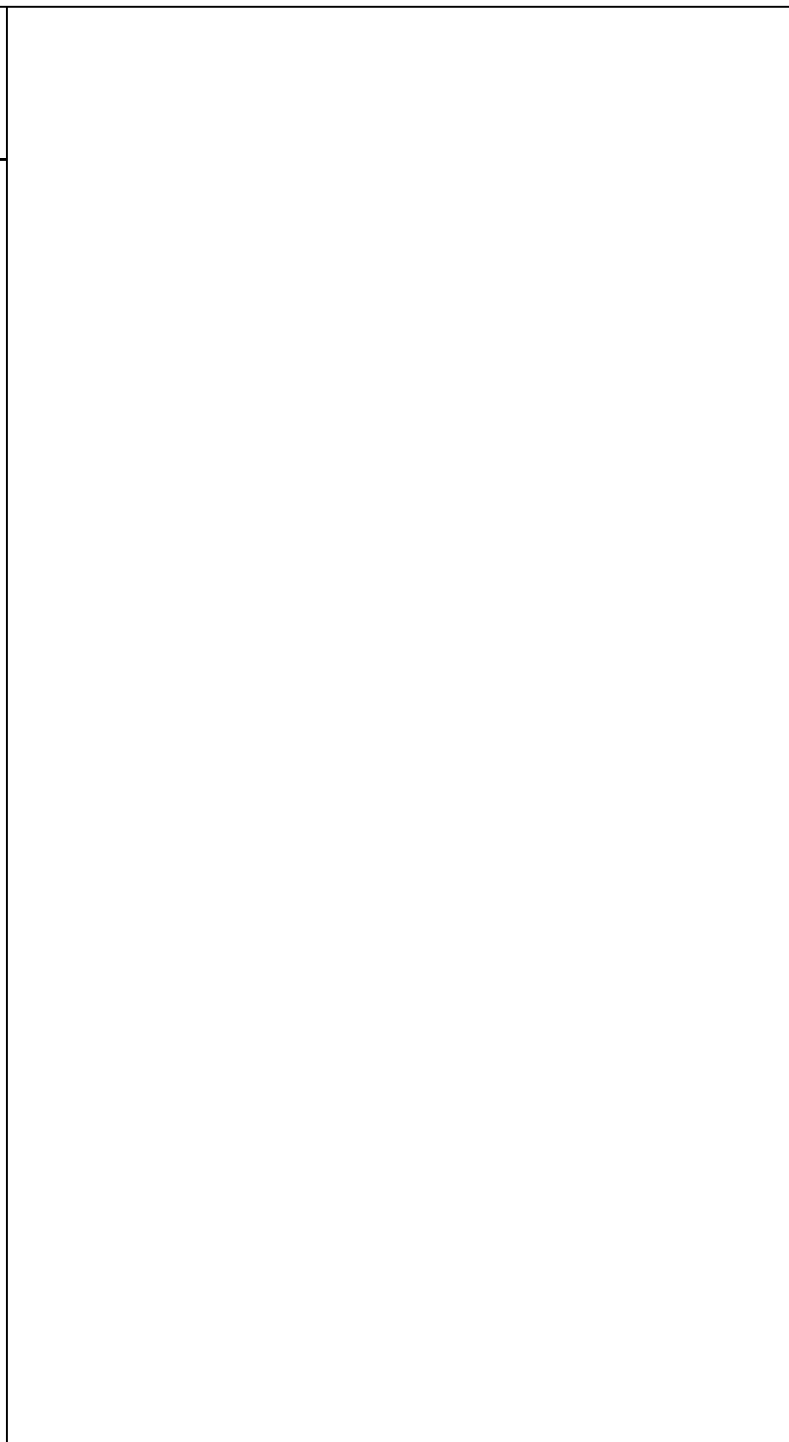
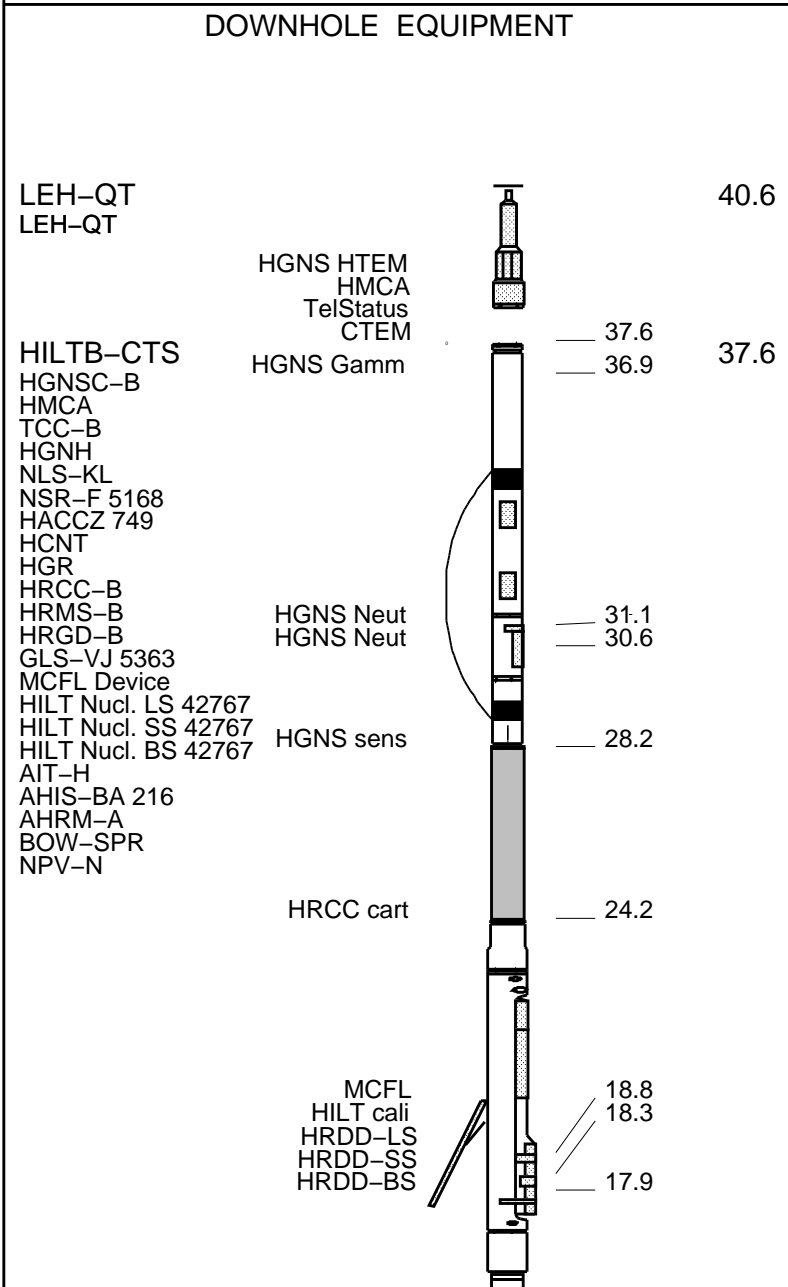
Rig: Black Gold 69	
Crew: Ian Derry, Gary Lapp	

RUN 1			RUN 2		
SERVICE ORDER #:		BHDJ-00092	SERVICE ORDER #:		
PROGRAM VERSION:		18C0-147	PROGRAM VERSION:		
FLUID LEVEL:		25 ft	FLUID LEVEL:		
LOGGED INTERVAL	START	STOP	LOGGED INTERVAL	START	STOP

EQUIPMENT DESCRIPTION					
RUN 1			RUN 2		

SURFACE EQUIPMENT

WITM (CTS)-A NCS-VB
GSR-U/Y
NCT-B
CNB-AB



Induction
Temperatu
Power Sup

1.5 IN
Standoff

7.9

SP SENSOR
HTEN HMAS
Accelerom HV
Mud Resis
Tension

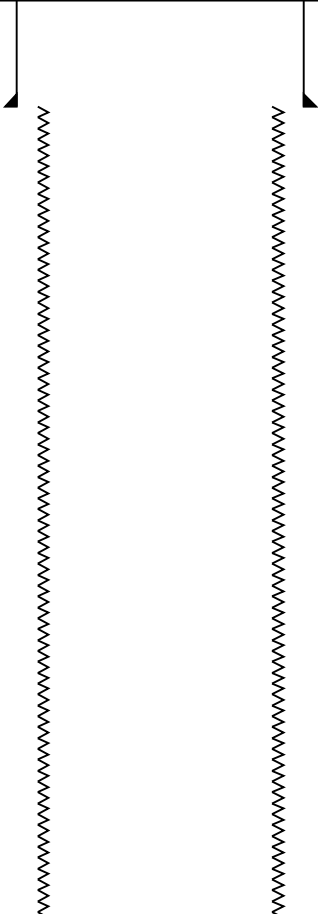
0.1

0.0

TOOL ZERO

1.5 IN
Standoff

MAXIMUM STRING DIAMETER 6.88 IN
MEASUREMENTS RELATIVE TO TOOL ZERO
ALL LENGTHS IN FEET

Production String	(in)		(ft)	Well Schematic	(ft)	(in)		Casing String
	OD	ID	MD		MD	OD	ID	
					0.0	9.625		Casing String
					420.0	9.625		Casing Shoe
					420.0	7.875		Borehole Segment

--	--	--	--	--	--	--	--	--	--

All Depths are Driller's
Depths

Output DLIS Files						
DEFAULT	AIT_TLD_MCFL_CNL_007LUP	FN:6	PRODUCER	03-Apr-2011 03:18	6642.0 FT	348.5 FT

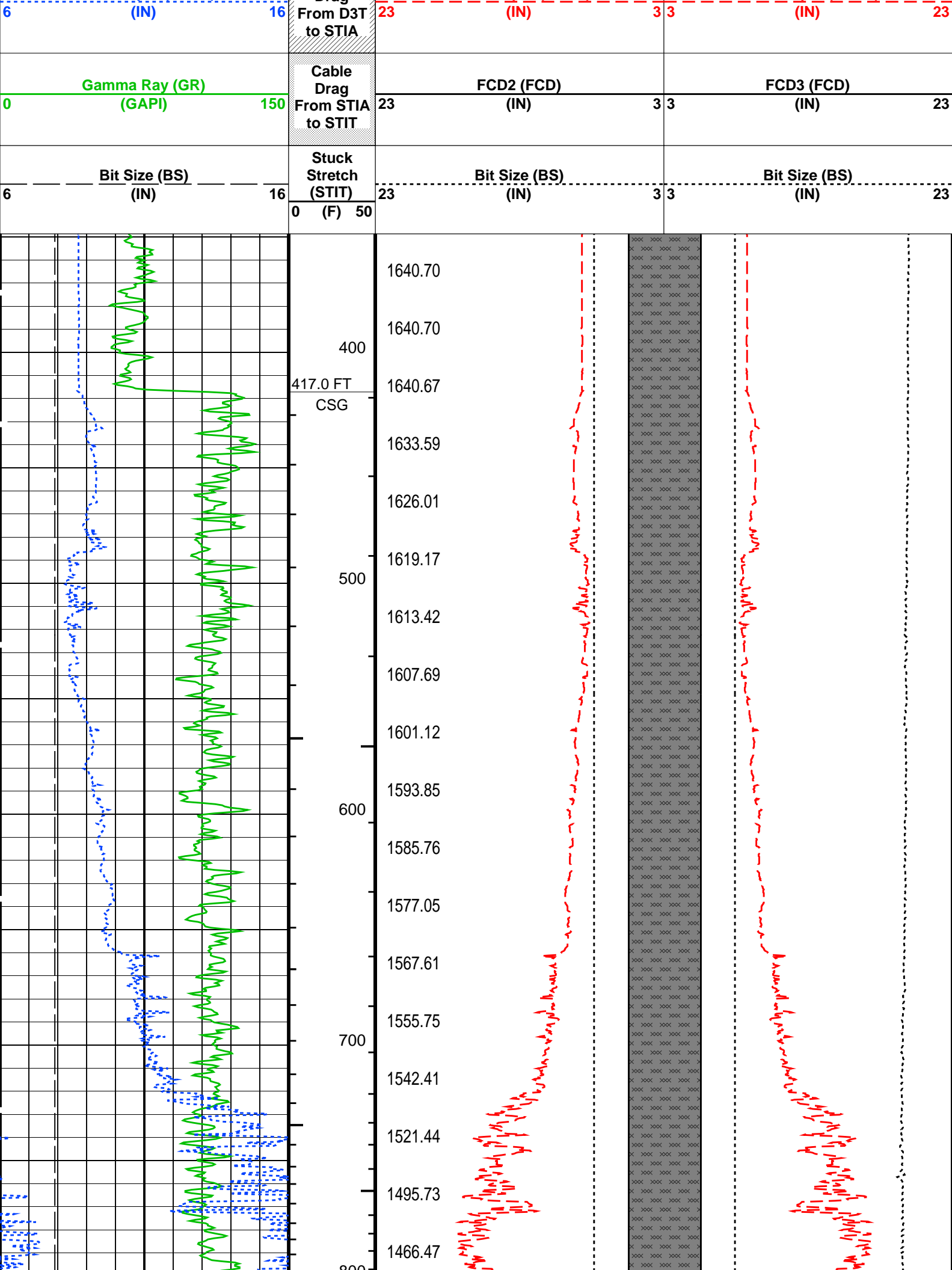
Integrated Hole/Cement Volume Summary	
Hole Volume = 2664.46 F3	
Cement Volume = 1640.70 F3 (assuming 5.50 IN casing O.D.)	
Computed from 6622.0 FT to 417.0 FT using data channel(s) HCAL	

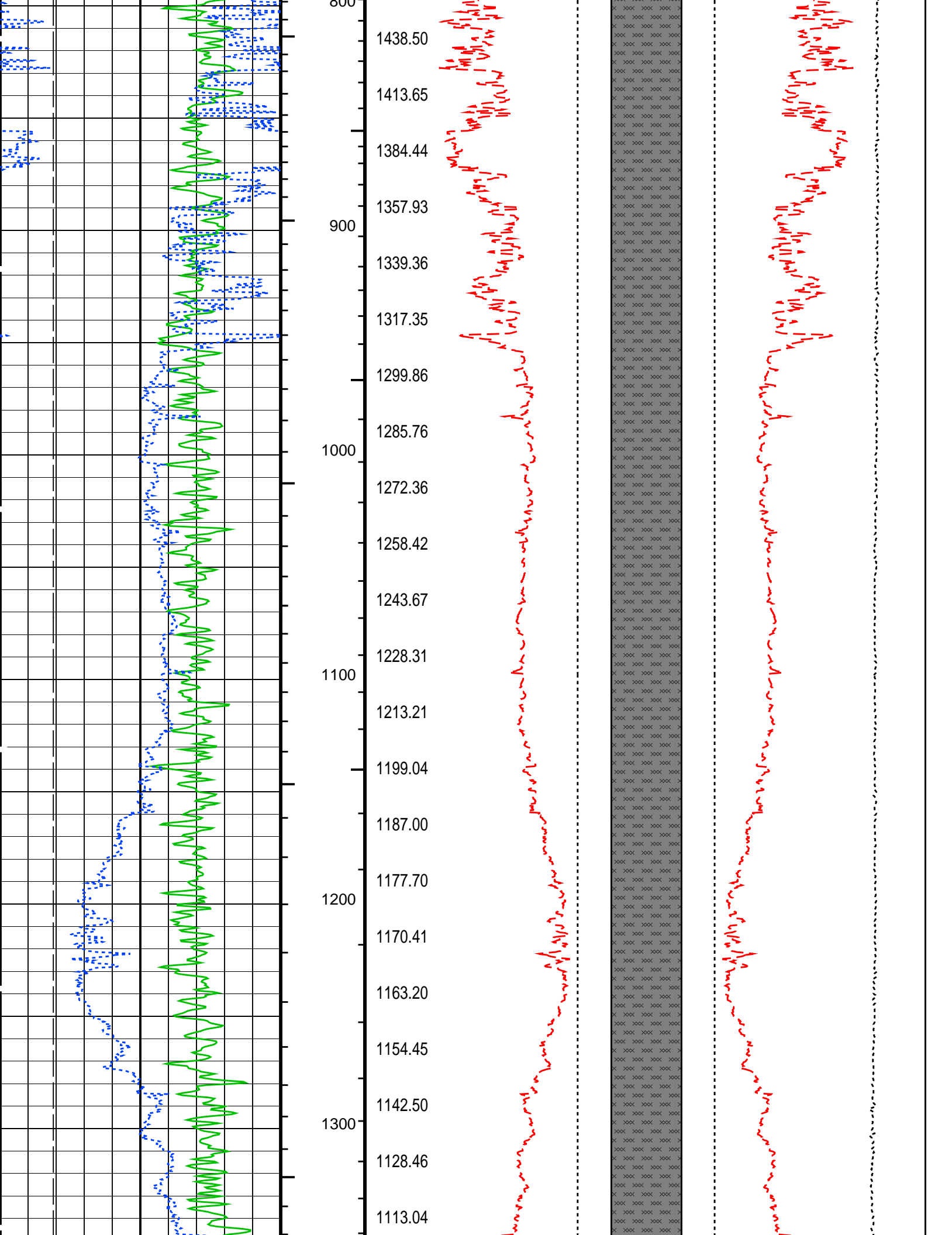
OP System Version: 18C0-147	
HILTB-CTS	18C0-147

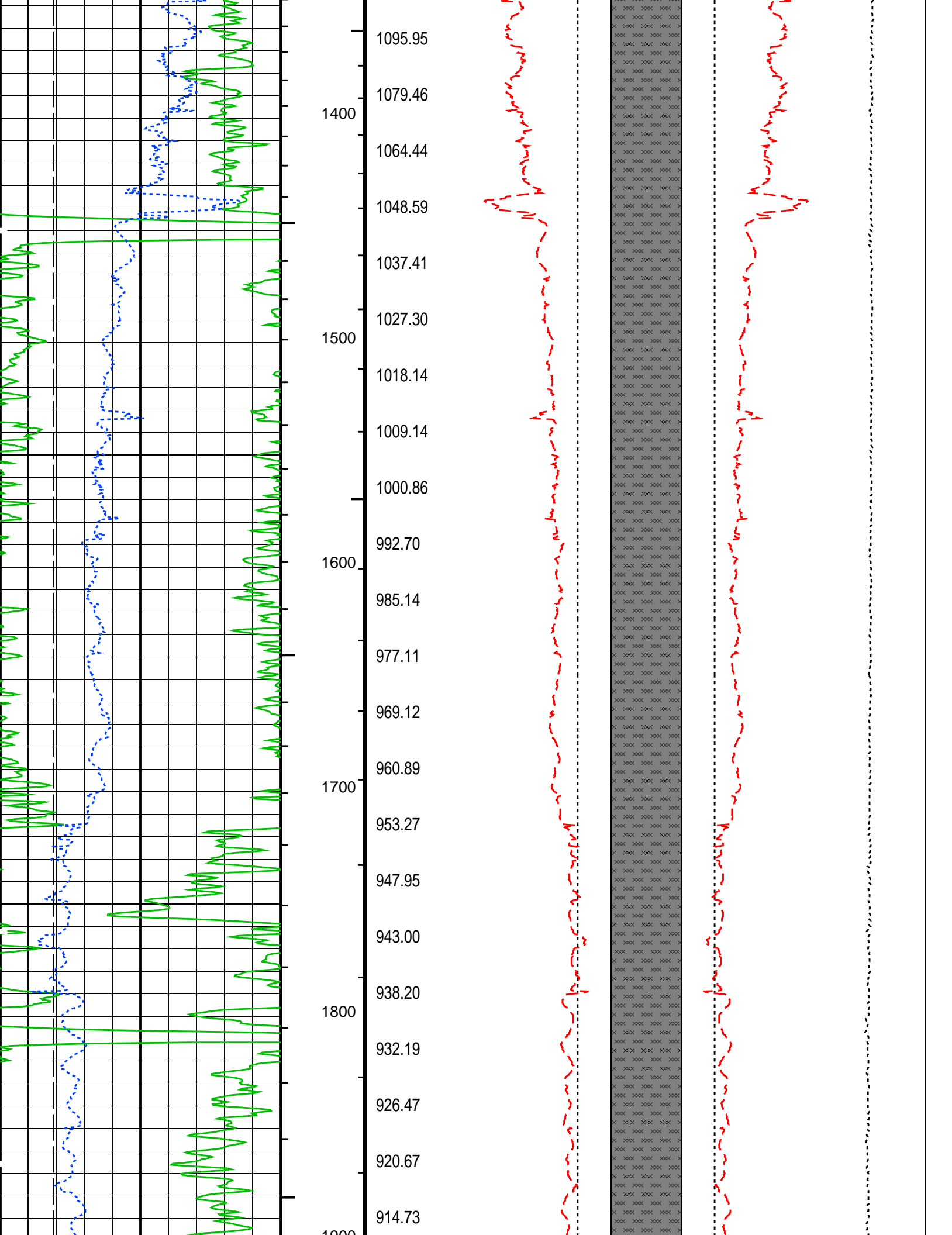
PIP SUMMARY	
└ Integrated Hole Volume Minor Pip Every 10 F3	
└ Integrated Hole Volume Major Pip Every 100 F3	
└ Integrated Cement Volume Minor Pip Every 10 F3	
└ Integrated Cement Volume Major Pip Every 100 F3	
Time Mark Every 60 S	

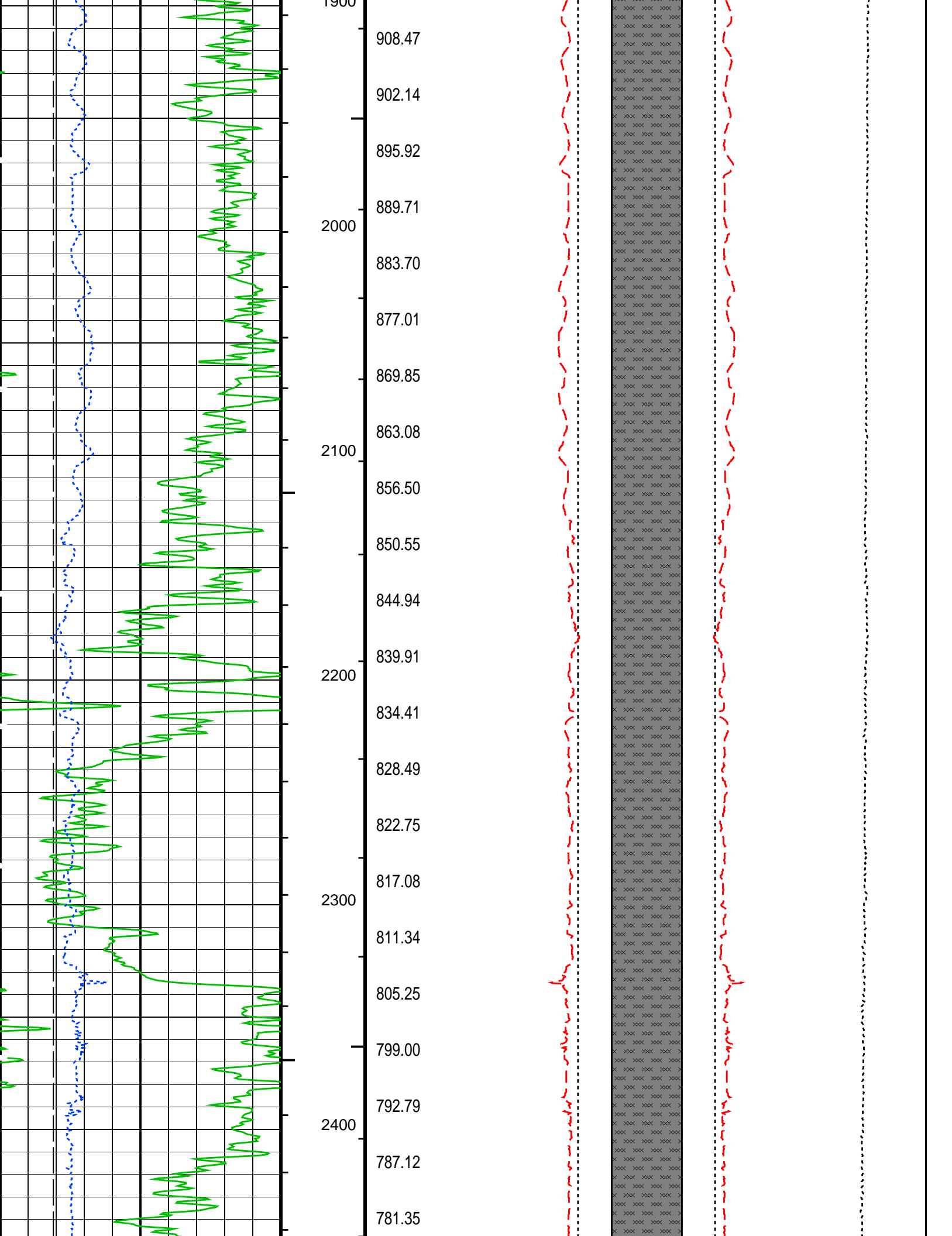
		FCD2 – FCD3 From FCD2 to FCD3	
		Cement Volume (ICV) (F3)	Tension (TENS) (LBF)
			6000 0

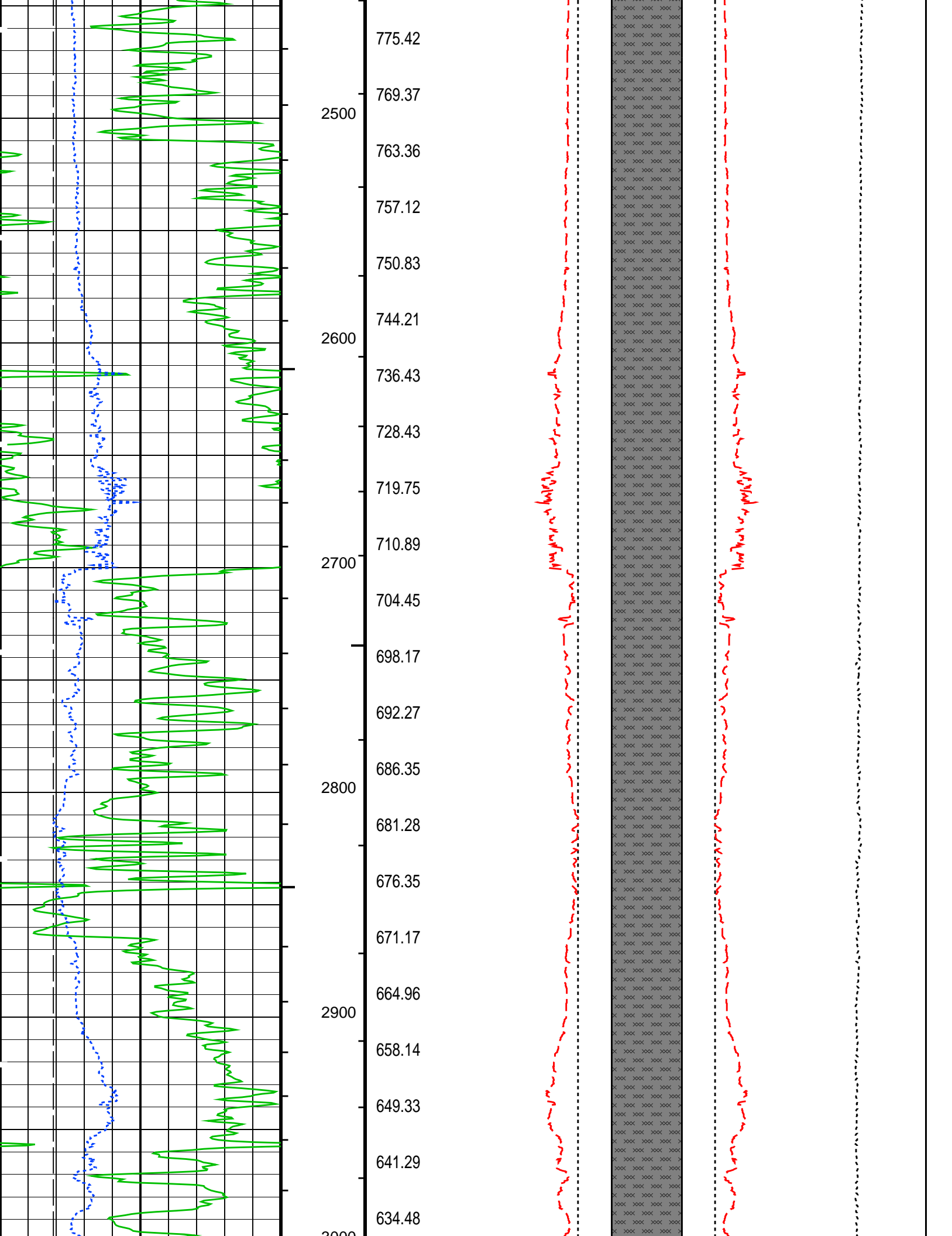
HILT Caliper (HCAL)	Tool/Tot. Drag	HILT Caliper (HCAL)	HILT Caliper (HCAL)
---------------------	-------------------	---------------------	---------------------

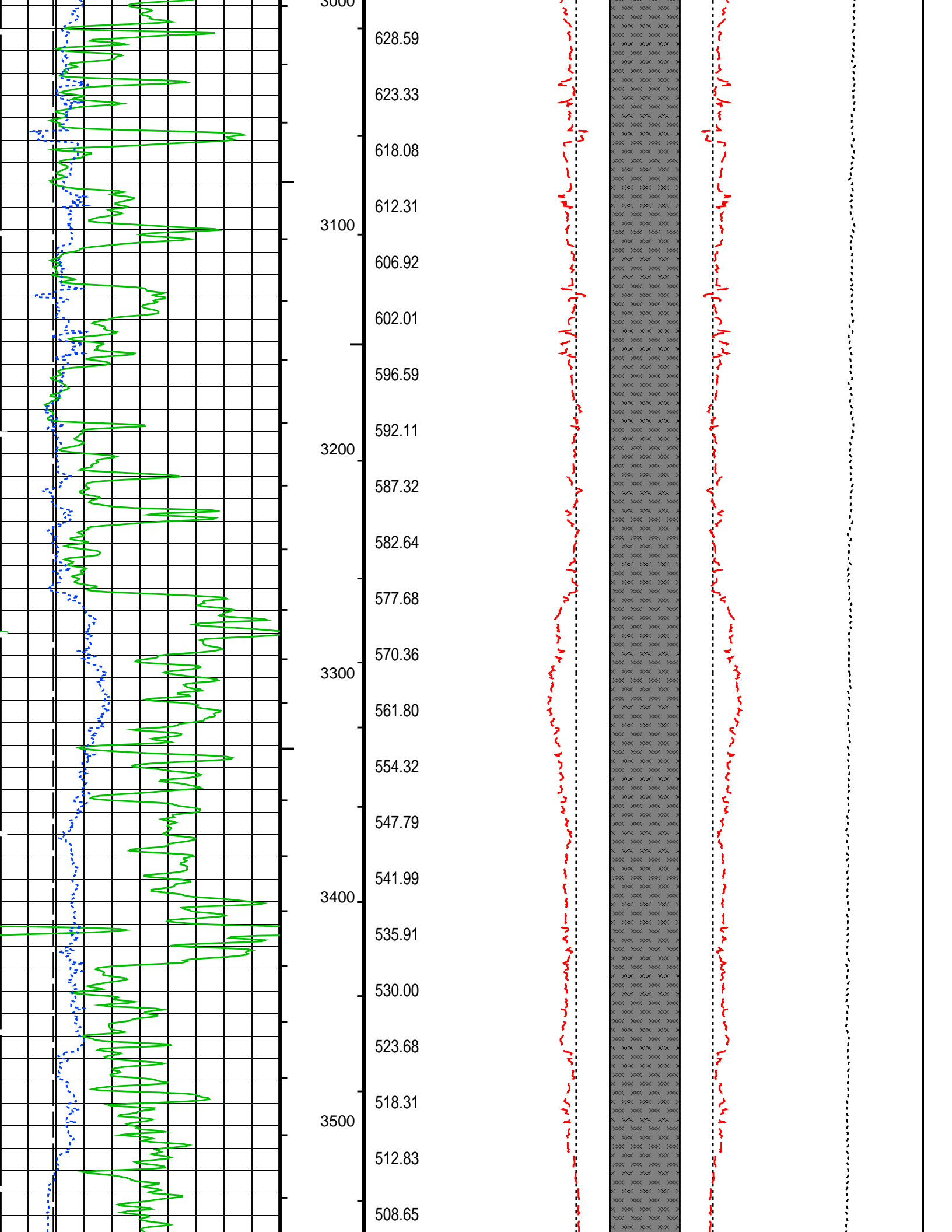


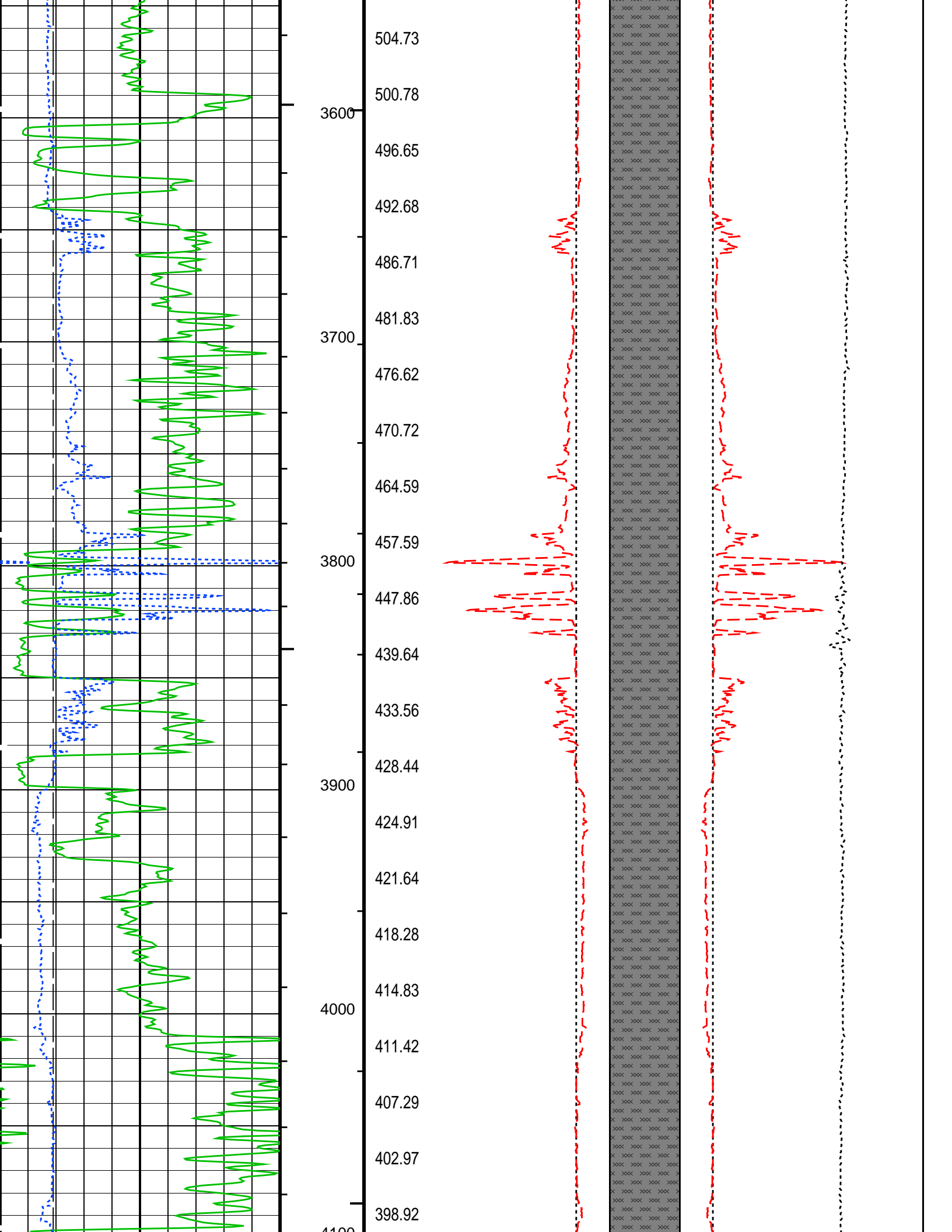


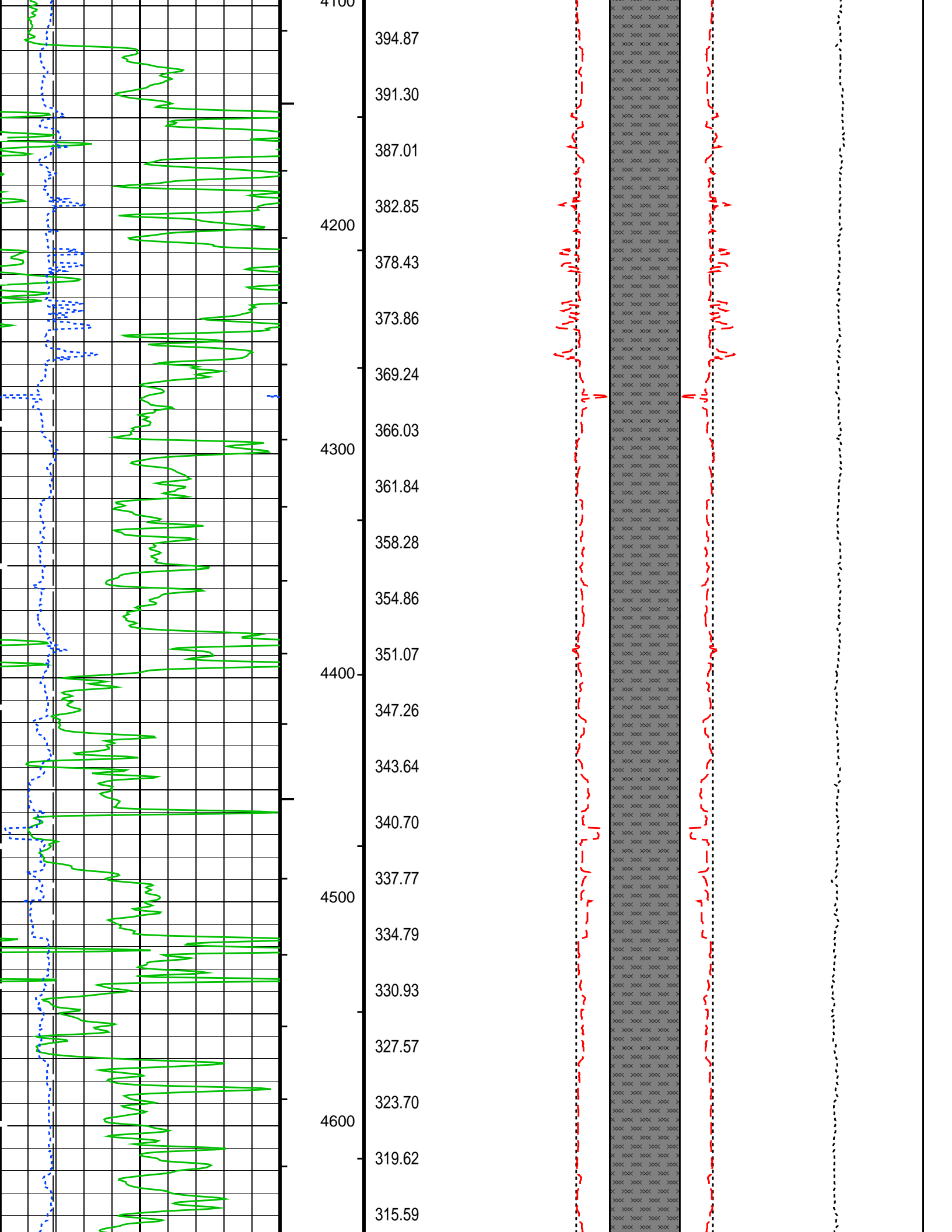


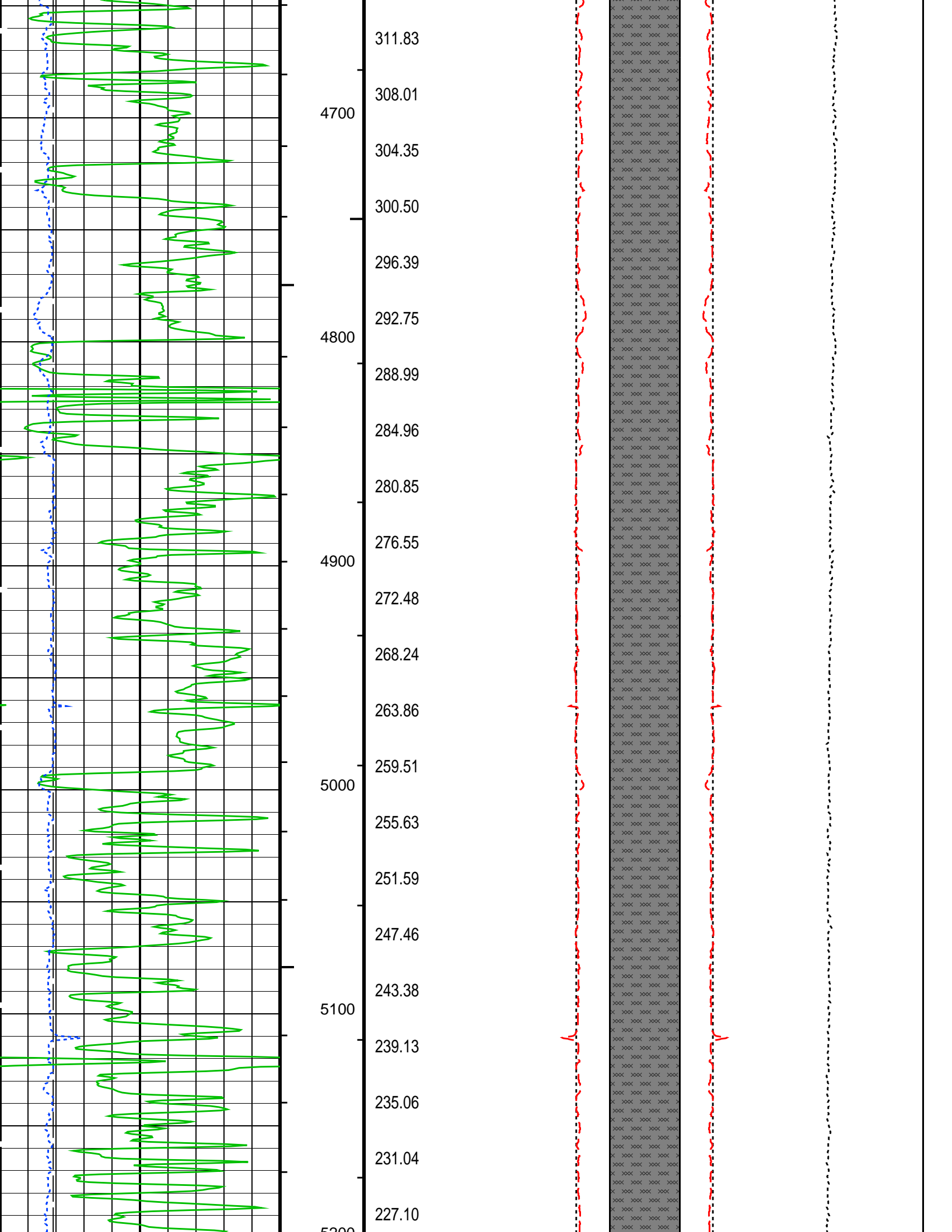


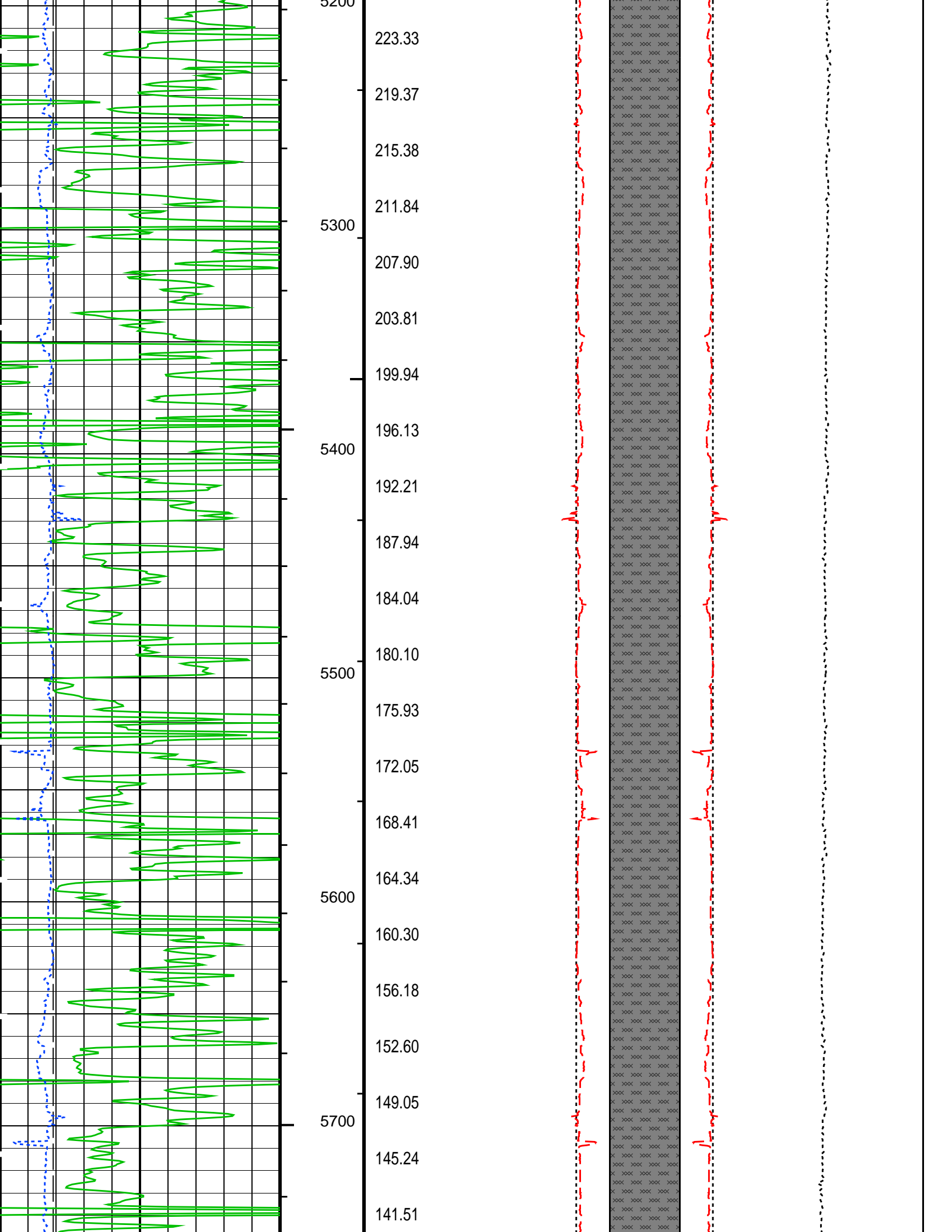


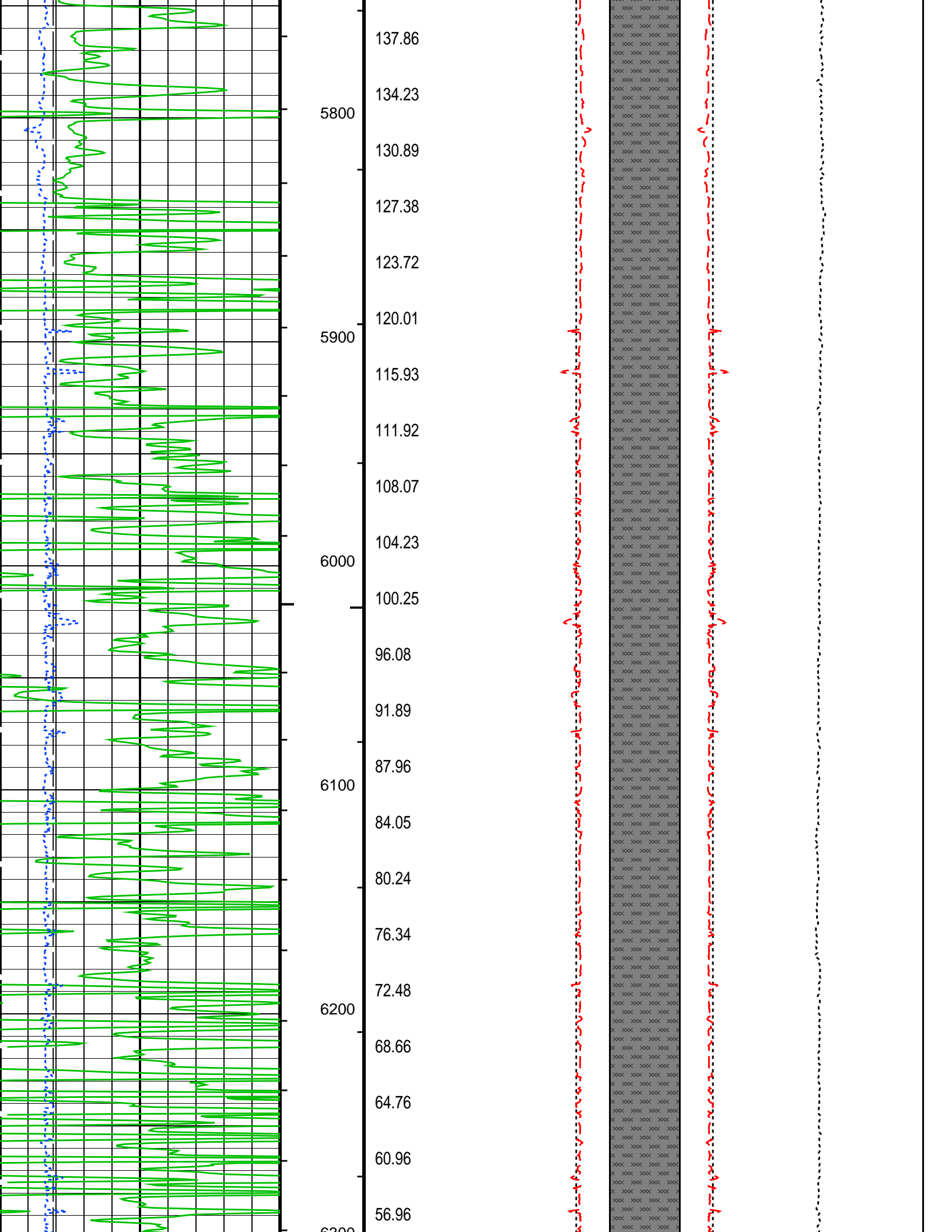


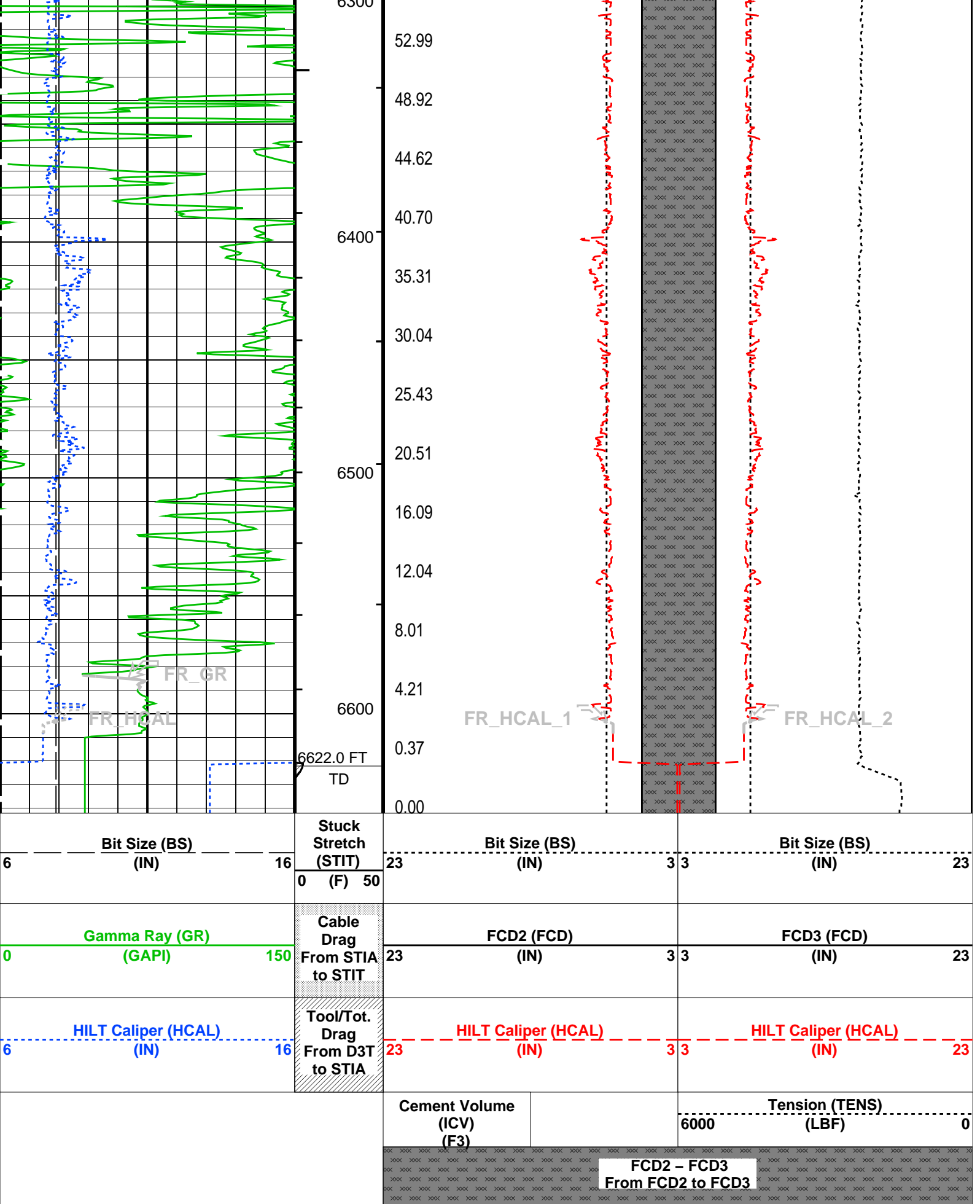












PIP SUMMARY

- └ Integrated Hole Volume Minor Pip Every 10 F3
- └ Integrated Hole Volume Major Pip Every 100 F3
- └ Integrated Cement Volume Minor Pip Every 10 F3
- └ Integrated Cement Volume Major Pip Every 100 F3

Parameters			
DLIS Name	Description	Value	
STI: Stuck Tool Indicator			
LBFR	Trigger for MAXIS First Reading Label	TDL	
STKT	STI Stuck Threshold	2.5	FT
TDD	Total Depth – Driller	6623.00	FT
TDL	Total Depth – Logger	6622.00	FT
HOLEV: Integrated Hole/Cement Volume			
FCD	Future Casing (Outer) Diameter	5.5	IN
HVCS	Integrated Hole Volume Caliper Selection	AUTOMATIC	
System and Miscellaneous			
BS	Bit Size	7.875	IN
DORL	Depth Offset for Repeat Analysis	0.0	FT
TD	Total Depth	6622	FT

Format: G_DCAL_FORMAT

Vertical Scale: 2" per 100'

Graphics File Created: 03-Apr-2011 03:18

OP System Version: 18C0-147

HILTB-CTS18C0-147

Output DLIS Files			
DEFAULT	AIT_TLD_MCFL_CNL_007LUP	FN:6	PRODUCER 03-Apr-2011 03:18

Company: Vecta Oil & Gas Ltd

Well: Cottonwood Grazing 3-22

Field: Wildcat

County: Lincoln

State: Colorado

Schlumberger

Platform Express
Cement Volume