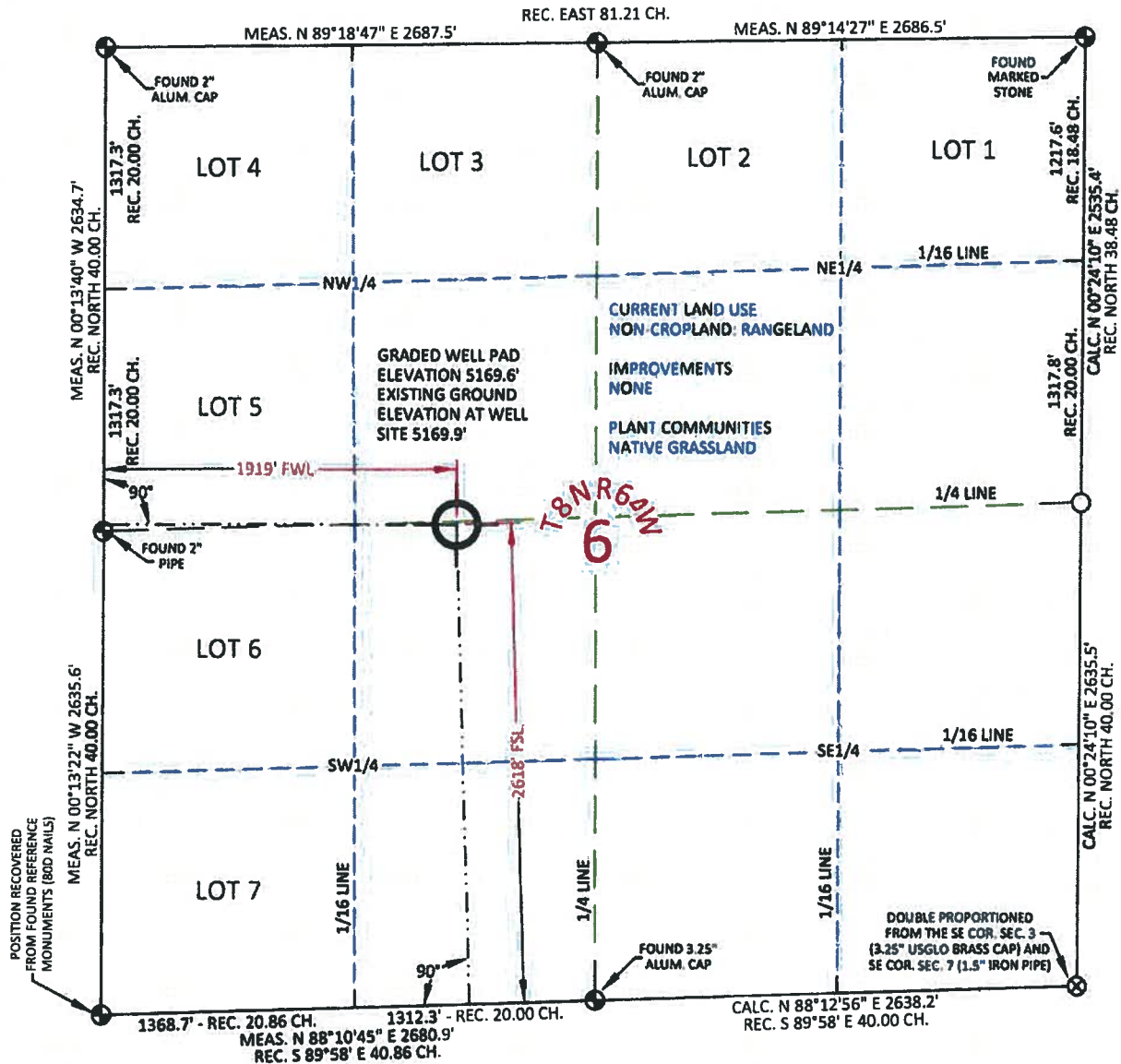


MARATHON OIL CO. OWL CREEK 8-64-6-1M
 LOCATED WITHIN THE NE1/4 SW1/4 SECTION 6, T8N, R64W,
 OF THE 6TH P.M., WELD COUNTY, COLORADO



MONITOR WELL LOCATION

GEOGRAPHIC CO. NORTH	LAT.	40.688818°
	LONG.	104.593905°
GEOGRAPHIC CO. NORTH	LAT.	40.688837°
	LONG.	104.593389°
GEOGRAPHIC CO. NORTH	LAT.	40°41'19.75"
	LONG.	104°35'38.06"
GEOGRAPHIC CO. NORTH	LAT.	40°41'19.81"
	LONG.	104°35'36.20"
STATE PLANE CO. NORTH	NORTH	1495063.50
	EAST	3251277.19
STATE PLANE CO. NORTH	NORTH	495063.24
	EAST	2251427.02

FOOTAGE: 1919' FWL - 2618' FSL

GROUND ELEV. 5169.9'

INST. OPTR. ADAM HARMON

MEASURE DATE: 03/23/2011

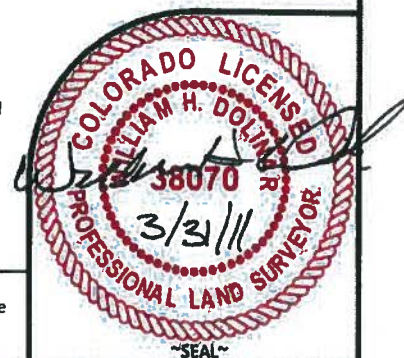
PDOP: 1.8

I, William H. Dollnar, Professional Land Surveyor, CO. RLS # 38070 hereby certify that (In accordance with a request from Anna Walls with Marathon Oil Co, 5555 San Felipe, Houston, TX 77056) I and or personnel under my direction made a survey on the 23th day of March 2011, for the Monitoring Well Location and Elevation of Marathon Oil Co. OWL CREEK 8-64-6-1M being located within the NE1/4 SW1/4 Section 6, T8N R64W, of the 6th P.M., Weld County, State of Colorado.

- All bearings and distances are GRID based on the Colorado State Plane Coordinate System, North Zone, North American Datum 1983 from GPS observations occupying a WHS control point (5/8" rebar) and having the Location and Elevation derived from an Opus Solution.
- Vertical Datum used is of NAVD 88.
- Record Bearings and Distances as shown are based on the General Land Office Survey plat approved on the 20th day of October 1870.

CONFIDENTIALITY NOTES:

The Information contained in this plot is legally privileged and confidential information intended only for the use of the recipients. If you are not the intended recipients, you are hereby notified that any use, dissemination, distribution or copying of this information is strictly prohibited.



WILLIAM H. SMITH & ASSOCIATES P.C.

SURVEYING CONSULTANTS
 1350 EAST SECOND NORTH
 GREEN RIVER, WY 82501
 PHONE: 307-875-3638
 307-875-3639
 www.whsmithpc.com

LEGEND

- FOUND CORNER
- ⊗ CALCULATED CORNER
- NOTHING FOUND

LOCATION:

OWL CREEK
 8-64-6-1M
 WITHIN THE NE1/4
 SW1/4 SECTION 6,
 T 8 N, R 64 W,
 6TH PM.
 WELD COUNTY,
 COLORADO

MARATHON OIL COMPANY
 PO BOX 3128, HOUSTON TX, 77253
 5555 SAN FELIPE, HOUSTON TX, 77056

MONITORING WELL PLAT

SCALE: 1"=1000'
 DATE: 03/28/2011
 EXHIBIT "A"
 SHEET 1 OF 1