

# **Chesapeake Energy -Rockies District**

**Weld - DJ Basin**

**SIDWELL 32-10-66 1H**

**SIDWELL 32-10-66 1H**

**SIDWELL 32-10-66 1H**

**Plan: SIDWELL 32-10-66 1H**

## **Standard Planning Report**

**15 April, 2011**

# Chesapeake Operating

## Planning Report

<b>Database:</b>	Drilling Database	<b>Local Co-ordinate Reference:</b>	Well SIDWELL 32-10-66 1H
<b>Company:</b>	Chesapeake Energy -Rockies District	<b>TVD Reference:</b>	WELL @ 0.0usft (Original Well Elev)
<b>Project:</b>	Weld - DJ Basin	<b>MD Reference:</b>	WELL @ 0.0usft (Original Well Elev)
<b>Site:</b>	SIDWELL 32-10-66 1H	<b>North Reference:</b>	Grid
<b>Well:</b>	SIDWELL 32-10-66 1H	<b>Survey Calculation Method:</b>	Minimum Curvature
<b>Wellbore:</b>	SIDWELL 32-10-66 1H		
<b>Design:</b>	SIDWELL 32-10-66 1H		

<b>Project</b>	Weld - DJ Basin		
<b>Map System:</b>	US State Plane 1927 (Exact solution)	<b>System Datum:</b>	Mean Sea Level
<b>Geo Datum:</b>	NAD 1927 (NADCON CONUS)		
<b>Map Zone:</b>	Colorado North 501		

Site		SIDWELL 32-10-66 1H				
Site Position:		Northing:	534,004.81 ft	Latitude:	40° 47' 49.79717010 N	
From:	Map	Easting:	2,193,059.64 ft	Longitude:	104° 48' 9.92010366 W	
Position Uncertainty:		0.0 usft	Slot Radius:	13.200 in	Grid Convergence:	0.45 °

Well	SIDWELL 32-10-66 1H					
Well Position	+N/-S	0.0 usft	Northing:	534,004.81 ft	Latitude:	40° 47' 49.79717010 N
	+E/-W	0.0 usft	Easting:	2,193,059.64 ft	Longitude:	104° 48' 9.92010366 W
Position Uncertainty		0.0 usft	Wellhead Elevation:		Ground Level:	0.0 usft

<b>Wellbore</b>	SIDWELL 32-10-66 1H				
<b>Magnetics</b>	<b>Model Name</b>	<b>Sample Date</b>	<b>Declination (°)</b>	<b>Dip Angle (°)</b>	<b>Field Strength (nT)</b>
	IGRF200510	4/15/2011	8.90	67.38	53,414

<b>Design</b>	SIDWELL 32-10-66 1H			
<b>Audit Notes:</b>				
<b>Version:</b>	<b>Phase:</b>	PROTOTYPE	<b>Tie On Depth:</b>	0.0
<b>Vertical Section:</b>	<b>Depth From (TVD) (usft)</b>	<b>+N/-S (usft)</b>	<b>+E/-W (usft)</b>	<b>Direction (°)</b>
	0.0	0.0	0.0	179.65

<b>Plan Sections</b>										
<b>Measured Depth (usft)</b>	<b>Inclination (°)</b>	<b>Azimuth (°)</b>	<b>Vertical Depth (usft)</b>	<b>+N/-S (usft)</b>	<b>+E/-W (usft)</b>	<b>Dogleg Rate (°/100usft)</b>	<b>Build Rate (°/100usft)</b>	<b>Turn Rate (°/100usft)</b>	<b>TFO (°)</b>	<b>Target</b>
0.0	0.00	0.00	0.0	0.0	0.0	0.00	0.00	0.00	0.00	

# Chesapeake Operating

## Planning Report

<b>Database:</b>	Drilling Database	<b>Local Co-ordinate Reference:</b>	Well SIDWELL 32-10-66 1H
<b>Company:</b>	Chesapeake Energy -Rockies District	<b>TVD Reference:</b>	WELL @ 0.0usft (Original Well Elev)
<b>Project:</b>	Weld - DJ Basin	<b>MD Reference:</b>	WELL @ 0.0usft (Original Well Elev)
<b>Site:</b>	SIDWELL 32-10-66 1H	<b>North Reference:</b>	Grid
<b>Well:</b>	SIDWELL 32-10-66 1H	<b>Survey Calculation Method:</b>	Minimum Curvature
<b>Wellbore:</b>	SIDWELL 32-10-66 1H		
<b>Design:</b>	SIDWELL 32-10-66 1H		

Planned Survey									
Measured Depth (usft)	Inclination (°)	Azimuth (°)	Vertical Depth (usft)	+N/-S (usft)	+E/-W (usft)	Vertical Section (usft)	Dogleg Rate (°/100usft)	Build Rate (°/100usft)	Turn Rate (°/100usft)
0.0	0.00	0.00	0.0	0.0	0.0	0.0	0.00	0.00	0.00
100.0	0.00	0.00	100.0	0.0	0.0	0.0	0.00	0.00	0.00
200.0	0.00	0.00	200.0	0.0	0.0	0.0	0.00	0.00	0.00
300.0	0.00	0.00	300.0	0.0	0.0	0.0	0.00	0.00	0.00
400.0	0.00	0.00	400.0	0.0	0.0	0.0	0.00	0.00	0.00
500.0	0.00	0.00	500.0	0.0	0.0	0.0	0.00	0.00	0.00
600.0	0.00	0.00	600.0	0.0	0.0	0.0	0.00	0.00	0.00
700.0	0.00	0.00	700.0	0.0	0.0	0.0	0.00	0.00	0.00
800.0	0.00	0.00	800.0	0.0	0.0	0.0	0.00	0.00	0.00
900.0	0.00	0.00	900.0	0.0	0.0	0.0	0.00	0.00	0.00
1,000.0	0.00	0.00	1,000.0	0.0	0.0	0.0	0.00	0.00	0.00
1,100.0	0.00	0.00	1,100.0	0.0	0.0	0.0	0.00	0.00	0.00
1,200.0	0.00	0.00	1,200.0	0.0	0.0	0.0	0.00	0.00	0.00
1,300.0	0.00	0.00	1,300.0	0.0	0.0	0.0	0.00	0.00	0.00
1,400.0	0.00	0.00	1,400.0	0.0	0.0	0.0	0.00	0.00	0.00
1,500.0	0.00	0.00	1,500.0	0.0	0.0	0.0	0.00	0.00	0.00
1,600.0	0.00	0.00	1,600.0	0.0	0.0	0.0	0.00	0.00	0.00
1,700.0	0.00	0.00	1,700.0	0.0	0.0	0.0	0.00	0.00	0.00
1,800.0	0.00	0.00	1,800.0	0.0	0.0	0.0	0.00	0.00	0.00
1,900.0	0.00	0.00	1,900.0	0.0	0.0	0.0	0.00	0.00	0.00
2,000.0	0.00	0.00	2,000.0	0.0	0.0	0.0	0.00	0.00	0.00
2,100.0	0.00	0.00	2,100.0	0.0	0.0	0.0	0.00	0.00	0.00
2,200.0	0.00	0.00	2,200.0	0.0	0.0	0.0	0.00	0.00	0.00
2,300.0	0.00	0.00	2,300.0	0.0	0.0	0.0	0.00	0.00	0.00
2,400.0	0.00	0.00	2,400.0	0.0	0.0	0.0	0.00	0.00	0.00
2,500.0	0.00	0.00	2,500.0	0.0	0.0	0.0	0.00	0.00	0.00
2,600.0	0.00	0.00	2,600.0	0.0	0.0	0.0	0.00	0.00	0.00
2,700.0	0.00	0.00	2,700.0	0.0	0.0	0.0	0.00	0.00	0.00
2,800.0	0.00	0.00	2,800.0	0.0	0.0	0.0	0.00	0.00	0.00
2,900.0	0.00	0.00	2,900.0	0.0	0.0	0.0	0.00	0.00	0.00
3,000.0	0.00	0.00	3,000.0	0.0	0.0	0.0	0.00	0.00	0.00
3,100.0	0.00	0.00	3,100.0	0.0	0.0	0.0	0.00	0.00	0.00
3,200.0	0.00	0.00	3,200.0	0.0	0.0	0.0	0.00	0.00	0.00
3,300.0	0.00	0.00	3,300.0	0.0	0.0	0.0	0.00	0.00	0.00
3,400.0	0.00	0.00	3,400.0	0.0	0.0	0.0	0.00	0.00	0.00
3,500.0	0.00	0.00	3,500.0	0.0	0.0	0.0	0.00	0.00	0.00
3,600.0	0.00	0.00	3,600.0	0.0	0.0	0.0	0.00	0.00	0.00
3,700.0	0.00	0.00	3,700.0	0.0	0.0	0.0	0.00	0.00	0.00
3,800.0	0.00	0.00	3,800.0	0.0	0.0	0.0	0.00	0.00	0.00
3,900.0	0.00	0.00	3,900.0	0.0	0.0	0.0	0.00	0.00	0.00
4,000.0	0.00	0.00	4,000.0	0.0	0.0	0.0	0.00	0.00	0.00
4,100.0	0.00	0.00	4,100.0	0.0	0.0	0.0	0.00	0.00	0.00
4,200.0	0.00	0.00	4,200.0	0.0	0.0	0.0	0.00	0.00	0.00
4,300.0	0.00	0.00	4,300.0	0.0	0.0	0.0	0.00	0.00	0.00
4,400.0	0.00	0.00	4,400.0	0.0	0.0	0.0	0.00	0.00	0.00
4,500.0	0.00	0.00	4,500.0	0.0	0.0	0.0	0.00	0.00	0.00
4,600.0	0.00	0.00	4,600.0	0.0	0.0	0.0	0.00	0.00	0.00
4,700.0	0.00	0.00	4,700.0	0.0	0.0	0.0	0.00	0.00	0.00
4,800.0	0.00	0.00	4,800.0	0.0	0.0	0.0	0.00	0.00	0.00
4,900.0	0.00	0.00	4,900.0	0.0	0.0	0.0	0.00	0.00	0.00
5,000.0	0.00	0.00	5,000.0	0.0	0.0	0.0	0.00	0.00	0.00
5,100.0	0.00	0.00	5,100.0	0.0	0.0	0.0	0.00	0.00	0.00
5,200.0	0.00	0.00	5,200.0	0.0	0.0	0.0	0.00	0.00	0.00
5,300.0	0.00	0.00	5,300.0	0.0	0.0	0.0	0.00	0.00	0.00

# Chesapeake Operating

## Planning Report

<b>Database:</b>	Drilling Database	<b>Local Co-ordinate Reference:</b>	Well SIDWELL 32-10-66 1H
<b>Company:</b>	Chesapeake Energy -Rockies District	<b>TVD Reference:</b>	WELL @ 0.0usft (Original Well Elev)
<b>Project:</b>	Weld - DJ Basin	<b>MD Reference:</b>	WELL @ 0.0usft (Original Well Elev)
<b>Site:</b>	SIDWELL 32-10-66 1H	<b>North Reference:</b>	Grid
<b>Well:</b>	SIDWELL 32-10-66 1H	<b>Survey Calculation Method:</b>	Minimum Curvature
<b>Wellbore:</b>	SIDWELL 32-10-66 1H		
<b>Design:</b>	SIDWELL 32-10-66 1H		

Planned Survey									
Measured Depth (usft)	Inclination (°)	Azimuth (°)	Vertical Depth (usft)	+N/-S (usft)	+E/-W (usft)	Vertical Section (usft)	Dogleg Rate (°/100usft)	Build Rate (°/100usft)	Turn Rate (°/100usft)
5,400.0	0.00	0.00	5,400.0	0.0	0.0	0.0	0.00	0.00	0.00
5,500.0	0.00	0.00	5,500.0	0.0	0.0	0.0	0.00	0.00	0.00
5,600.0	0.00	0.00	5,600.0	0.0	0.0	0.0	0.00	0.00	0.00
5,700.0	0.00	0.00	5,700.0	0.0	0.0	0.0	0.00	0.00	0.00
5,800.0	0.00	0.00	5,800.0	0.0	0.0	0.0	0.00	0.00	0.00
5,900.0	0.00	0.00	5,900.0	0.0	0.0	0.0	0.00	0.00	0.00
6,000.0	0.00	0.00	6,000.0	0.0	0.0	0.0	0.00	0.00	0.00
6,100.0	0.00	0.00	6,100.0	0.0	0.0	0.0	0.00	0.00	0.00
6,200.0	0.00	0.00	6,200.0	0.0	0.0	0.0	0.00	0.00	0.00
6,300.0	0.00	0.00	6,300.0	0.0	0.0	0.0	0.00	0.00	0.00
6,400.0	0.00	0.00	6,400.0	0.0	0.0	0.0	0.00	0.00	0.00
6,500.0	0.00	0.00	6,500.0	0.0	0.0	0.0	0.00	0.00	0.00
6,600.0	0.00	0.00	6,600.0	0.0	0.0	0.0	0.00	0.00	0.00
6,700.0	0.00	0.00	6,700.0	0.0	0.0	0.0	0.00	0.00	0.00
6,800.0	0.00	0.00	6,800.0	0.0	0.0	0.0	0.00	0.00	0.00
6,900.0	0.00	0.00	6,900.0	0.0	0.0	0.0	0.00	0.00	0.00
7,000.0	0.00	0.00	7,000.0	0.0	0.0	0.0	0.00	0.00	0.00
7,100.0	0.00	0.00	7,100.0	0.0	0.0	0.0	0.00	0.00	0.00
7,200.0	0.00	0.00	7,200.0	0.0	0.0	0.0	0.00	0.00	0.00
7,300.0	0.00	0.00	7,300.0	0.0	0.0	0.0	0.00	0.00	0.00
7,382.2	0.00	0.00	7,382.2	0.0	0.0	0.0	0.00	0.00	0.00
7,400.0	1.78	179.65	7,400.0	-0.3	0.0	0.3	10.00	10.00	0.00
7,500.0	11.78	179.65	7,499.2	-12.1	0.1	12.1	10.00	10.00	0.00
7,600.0	21.78	179.65	7,594.8	-40.9	0.3	40.9	10.00	10.00	0.00
7,700.0	31.78	179.65	7,683.9	-85.9	0.5	85.9	10.00	10.00	0.00
7,800.0	41.78	179.65	7,763.9	-145.7	0.9	145.7	10.00	10.00	0.00
7,900.0	51.78	179.65	7,832.3	-218.5	1.4	218.5	10.00	10.00	0.00
8,000.0	61.78	179.65	7,887.1	-302.0	1.9	302.0	10.00	10.00	0.00
8,100.0	71.78	179.65	7,926.4	-393.8	2.4	393.8	10.00	10.00	0.00
8,200.0	81.78	179.65	7,949.3	-491.0	3.0	491.0	10.00	10.00	0.00
8,292.2	91.00	179.65	7,955.1	-582.9	3.6	583.0	10.00	10.00	0.00
8,300.0	91.00	179.65	7,954.9	-590.7	3.7	590.7	0.00	0.00	0.00
8,400.0	91.00	179.65	7,953.2	-690.7	4.3	690.7	0.00	0.00	0.00
8,500.0	91.00	179.65	7,951.5	-790.7	4.9	790.7	0.00	0.00	0.00
8,600.0	91.00	179.65	7,949.7	-890.7	5.5	890.7	0.00	0.00	0.00
8,700.0	91.00	179.65	7,948.0	-990.7	6.1	990.7	0.00	0.00	0.00
8,800.0	91.00	179.65	7,946.2	-1,090.6	6.7	1,090.7	0.00	0.00	0.00
8,900.0	91.00	179.65	7,944.5	-1,190.6	7.4	1,190.6	0.00	0.00	0.00
9,000.0	91.00	179.65	7,942.7	-1,290.6	8.0	1,290.6	0.00	0.00	0.00
9,100.0	91.00	179.65	7,941.0	-1,390.6	8.6	1,390.6	0.00	0.00	0.00
9,200.0	91.00	179.65	7,939.2	-1,490.6	9.2	1,490.6	0.00	0.00	0.00
9,300.0	91.00	179.65	7,937.5	-1,590.5	9.8	1,590.6	0.00	0.00	0.00
9,400.0	91.00	179.65	7,935.7	-1,690.5	10.5	1,690.6	0.00	0.00	0.00
9,500.0	91.00	179.65	7,934.0	-1,790.5	11.1	1,790.5	0.00	0.00	0.00
9,600.0	91.00	179.65	7,932.3	-1,890.5	11.7	1,890.5	0.00	0.00	0.00
9,700.0	91.00	179.65	7,930.5	-1,990.5	12.3	1,990.5	0.00	0.00	0.00
9,800.0	91.00	179.65	7,928.8	-2,090.5	12.9	2,090.5	0.00	0.00	0.00
9,900.0	91.00	179.65	7,927.0	-2,190.4	13.5	2,190.5	0.00	0.00	0.00
10,000.0	91.00	179.65	7,925.3	-2,290.4	14.2	2,290.5	0.00	0.00	0.00
10,100.0	91.00	179.65	7,923.5	-2,390.4	14.8	2,390.5	0.00	0.00	0.00
10,200.0	91.00	179.65	7,921.8	-2,490.4	15.4	2,490.4	0.00	0.00	0.00
10,300.0	91.00	179.65	7,920.0	-2,590.4	16.0	2,590.4	0.00	0.00	0.00
10,400.0	91.00	179.65	7,918.3	-2,690.4	16.6	2,690.4	0.00	0.00	0.00
10,500.0	91.00	179.65	7,916.5	-2,790.3	17.2	2,790.4	0.00	0.00	0.00

# Chesapeake Operating

## Planning Report

<b>Database:</b>	Drilling Database	<b>Local Co-ordinate Reference:</b>	Well SIDWELL 32-10-66 1H
<b>Company:</b>	Chesapeake Energy -Rockies District	<b>TVD Reference:</b>	WELL @ 0.0usft (Original Well Elev)
<b>Project:</b>	Weld - DJ Basin	<b>MD Reference:</b>	WELL @ 0.0usft (Original Well Elev)
<b>Site:</b>	SIDWELL 32-10-66 1H	<b>North Reference:</b>	Grid
<b>Well:</b>	SIDWELL 32-10-66 1H	<b>Survey Calculation Method:</b>	Minimum Curvature
<b>Wellbore:</b>	SIDWELL 32-10-66 1H		
<b>Design:</b>	SIDWELL 32-10-66 1H		

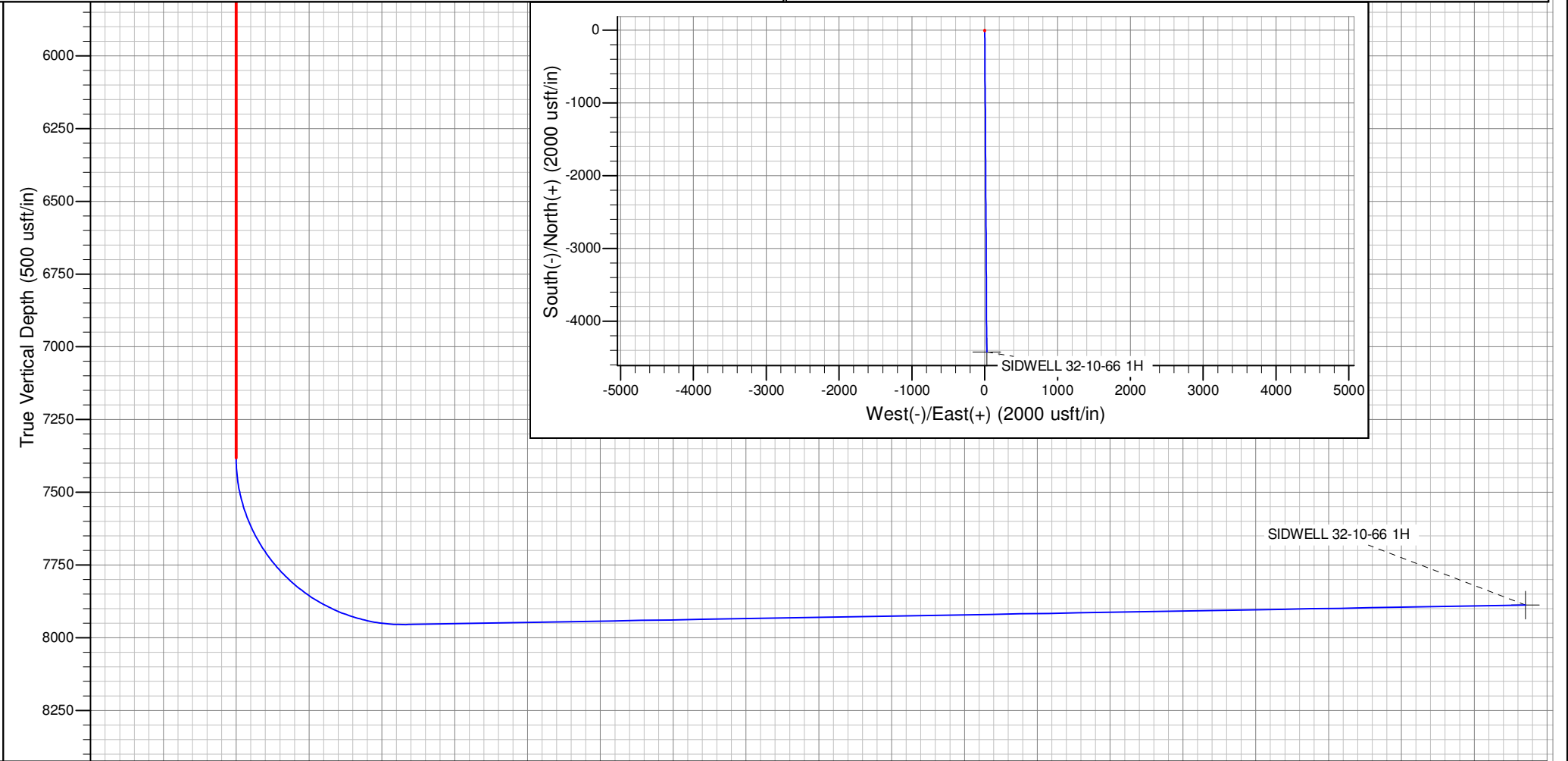
Planned Survey										
Measured Depth (usft)	Inclination (°)	Azimuth (°)	Vertical Depth (usft)	+N/-S (usft)	+E/-W (usft)	Vertical Section (usft)	Dogleg Rate (°/100usft)	Build Rate (°/100usft)	Turn Rate (°/100usft)	
10,600.0	91.00	179.65	7,914.8	-2,890.3	17.9	2,890.4	0.00	0.00	0.00	
10,700.0	91.00	179.65	7,913.1	-2,990.3	18.5	2,990.4	0.00	0.00	0.00	
10,800.0	91.00	179.65	7,911.3	-3,090.3	19.1	3,090.3	0.00	0.00	0.00	
10,900.0	91.00	179.65	7,909.6	-3,190.3	19.7	3,190.3	0.00	0.00	0.00	
11,000.0	91.00	179.65	7,907.8	-3,290.3	20.3	3,290.3	0.00	0.00	0.00	
11,100.0	91.00	179.65	7,906.1	-3,390.2	21.0	3,390.3	0.00	0.00	0.00	
11,200.0	91.00	179.65	7,904.3	-3,490.2	21.6	3,490.3	0.00	0.00	0.00	
11,300.0	91.00	179.65	7,902.6	-3,590.2	22.2	3,590.3	0.00	0.00	0.00	
11,400.0	91.00	179.65	7,900.8	-3,690.2	22.8	3,690.3	0.00	0.00	0.00	
11,500.0	91.00	179.65	7,899.1	-3,790.2	23.4	3,790.2	0.00	0.00	0.00	
11,600.0	91.00	179.65	7,897.3	-3,890.1	24.0	3,890.2	0.00	0.00	0.00	
11,700.0	91.00	179.65	7,895.6	-3,990.1	24.7	3,990.2	0.00	0.00	0.00	
11,800.0	91.00	179.65	7,893.9	-4,090.1	25.3	4,090.2	0.00	0.00	0.00	
11,900.0	91.00	179.65	7,892.1	-4,190.1	25.9	4,190.2	0.00	0.00	0.00	
12,000.0	91.00	179.65	7,890.4	-4,290.1	26.5	4,290.2	0.00	0.00	0.00	
12,100.0	91.00	179.65	7,888.6	-4,390.1	27.1	4,390.1	0.00	0.00	0.00	
12,135.7	91.00	179.65	7,888.0	-4,425.8	27.4	4,425.9	0.00	0.00	0.00	

Design Targets										
Target Name	Dip Angle (°)	Dip Dir. (°)	TVD (usft)	+N/-S (usft)	+E/-W (usft)	Northing (ft)	Easting (ft)	Latitude	Longitude	
- hit/miss target										
- Shape										
SIDWELL 32-10-66 1H	0.00	0.00	7,888.0	-4,425.8	27.4	529,579.00	2,193,087.00	40° 47' 6.064446511 N	4° 48' 10.01682339 W	
- plan hits target center										
- Point										

Project: Weld - DJ Basin  
Site: SIDWELL 32-10-66 1H  
Well: SIDWELL 32-10-66 1H  
Wellbore: SIDWELL 32-10-66 1H  
Design: SIDWELL 32-10-66 1H

PROJECT DETAILS: Weld - DJ Basin

Geodetic System: US State Plane 1927 (Exact solution)  
Datum: NAD 1927 (NADCON CONUS)  
Ellipsoid: Clarke 1866  
Zone: Colorado North 501  
  
System Datum: Mean Sea Level



SECTION DETAILS

Sec	MD	Inc	Azi	TVD	+N/-S	+E/-W	Dleg	TFace	VSect	Target
1	0.0	0.00	0.00	0.0	0.0	0.0	0.00	0.00	0.0	
2	7382.2	0.00	0.00	7382.2	0.0	0.0	0.00	0.00	0.0	
3	8292.2	91.00	179.65	7955.1	-582.9	3.6	10.00	179.65	583.0	
4	12135.7	91.00	179.65	7888.0	-4425.8	27.4	0.00	0.00	4425.9	SIDWELL 32-10-66 1H