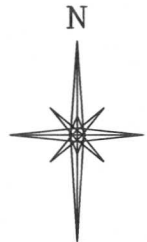
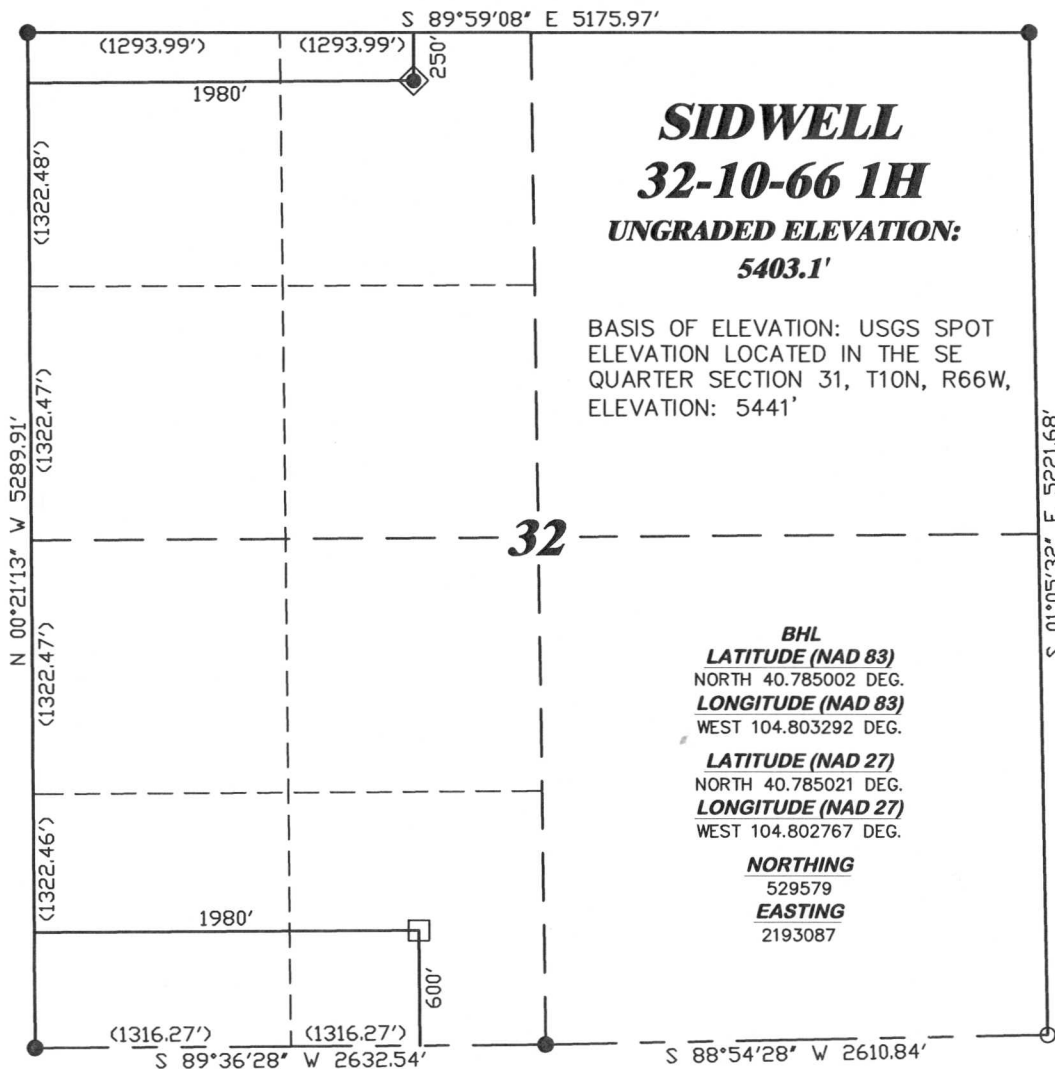


**R. 66 W.**



SCALE 1" = 1000'

**T. 10 N.**

**SIDWELL**  
**32-10-66 1H**  
**UNGRADED ELEVATION:**  
**5403.1'**

BASIS OF ELEVATION: USGS SPOT  
ELEVATION LOCATED IN THE SE  
QUARTER SECTION 31, T10N, R66W,  
ELEVATION: 5441'

**LATITUDE (NAD 83)**  
NORTH 40.797150 DEG.  
**LONGITUDE (NAD 83)**  
WEST 104.803265 DEG.

**LATITUDE (NAD 27)**  
NORTH 40.797169 DEG.  
**LONGITUDE (NAD 27)**  
WEST 104.802740 DEG.

**NORTHING**  
534004.81  
**EASTING**  
2193059.64

**BASIS OF BEARING/DATUM**  
SPCS CO NORTH NAD 27  
BASED ON DRG TRIANGULATION  
STATION "16-9-66"

**BHL**  
**LATITUDE (NAD 83)**  
NORTH 40.785002 DEG.  
**LONGITUDE (NAD 83)**  
WEST 104.803292 DEG.  
**LATITUDE (NAD 27)**  
NORTH 40.785021 DEG.  
**LONGITUDE (NAD 27)**  
WEST 104.802767 DEG.

**NORTHING**  
529579  
**EASTING**  
2193087

**NOTES**

PRAIRIE LANDS  
NO EXISTING FEATURES WITHIN  
400' RADIUS OF WELL SITE.

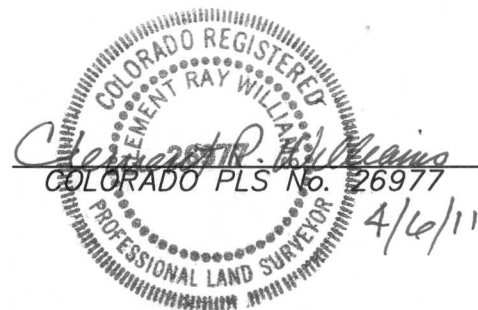
GPS OPERATOR PAUL ORME  
OBSERVED A PDOP OF 2.4.  
ALL GPS OBSERVATIONS ARE IN  
COMPLIANCE WITH COGCC RULE No.215.

**SURVEYOR'S STATEMENT**

I, CLEMENT R. WILLIAMS, OF ROCK SPRINGS, WYOMING, HEREBY STATE: THIS MAP WAS MADE FROM NOTES TAKEN DURING AN ACTUAL FIELD SURVEY DONE UNDER MY DIRECT SUPERVISION ON MARCH 2, 2011 AND THAT THIS PLAT CORRECTLY SHOWS THE LOCATION OF SIDWELL 32-10-66 1H AS STAKED ON THE GROUND.

**LEGEND**

- ◆ WELL LOCATION
- BOTTOM HOLE LOC. (APPROX)
- FOUND MONUMENT
- ▲ PREVIOUSLY FOUND MONUMENT
- CALCULATED CORNER



(307) 362-5028

**RIFFIN & ASSOCIATES, INC.**  
1414 ELK ST., ROCK SPRINGS, WY 82901

**PLAT OF DRILLING LOCATION**  
**FOR**  
**CHESAPEAKE ENERGY, LLC.**

**250' F/NL & 1980' F/WL, NENW, SECTION 32,**  
**T. 10 N., R. 66 W., 6th P.M.**  
**WELD COUNTY, COLORADO**

**DRAWN: 3/4/11 - MMM**

**SCALE: 1" = 1000'**

**REVISED: 4/6/11 - MMM**

**DRG JOB No. 18345**

**REVISED WELL NAME**

**EXHIBIT 1**