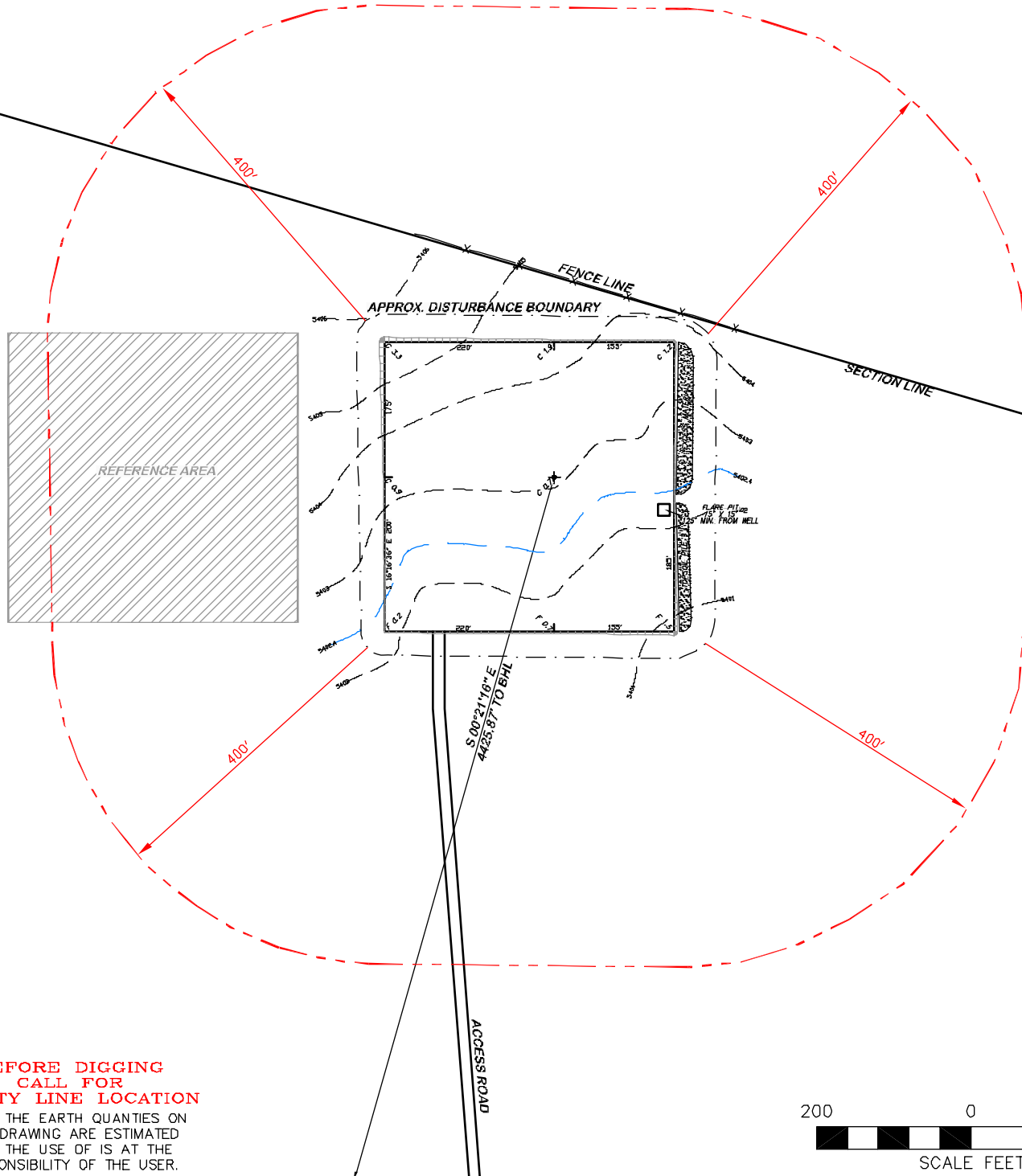


APPROXIMATE DISTURBANCE AREA: 4.7 ACRES±
 0.9% GRADE ON A SOUTHEASTERLY SLOPE
 UNGRADED ELEVATION: 5403.1'
 FINISHED ELEVATION: 5402.4'

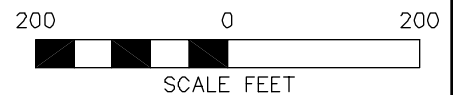
2A ATTACHMENT

2



**BEFORE DIGGING
 CALL FOR
 UTILITY LINE LOCATION**

NOTE: THE EARTH QUANTITIES ON
 THIS DRAWING ARE ESTIMATED
 AND THE USE OF IS AT THE
 RESPONSIBILITY OF THE USER.



RIFFIN & ASSOCIATES, INC.
 1414 ELK ST., ROCK SPRINGS, WY 82901

(307) 362-6028

DRAWN: 3/4/11 - MMM

SCALE: 1" = 200'

REVISED: 4/6/11 - MMM

DRG JOB No. 18345

REVISED WELL NAME

EXHIBIT 2C

LOCATION DRAWING

CHESAPEAKE ENERGY, LLC.
SIDWELL 32-10-66 1H
SECTION 32, T10N, R66W

UNGRADED ELEVATION: 5403.1'
 FINISHED ELEVATION: 5402.4'