

Project: Weld - DJ Basin  
Site: Hediger 14-9-67 1H  
Well: Hediger 14-9-67 1H  
Wellbore: Hediger 14-9-67 1H  
Design: Hediger 14-9-67 1H

PROJECT DETAILS: Weld - DJ Basin

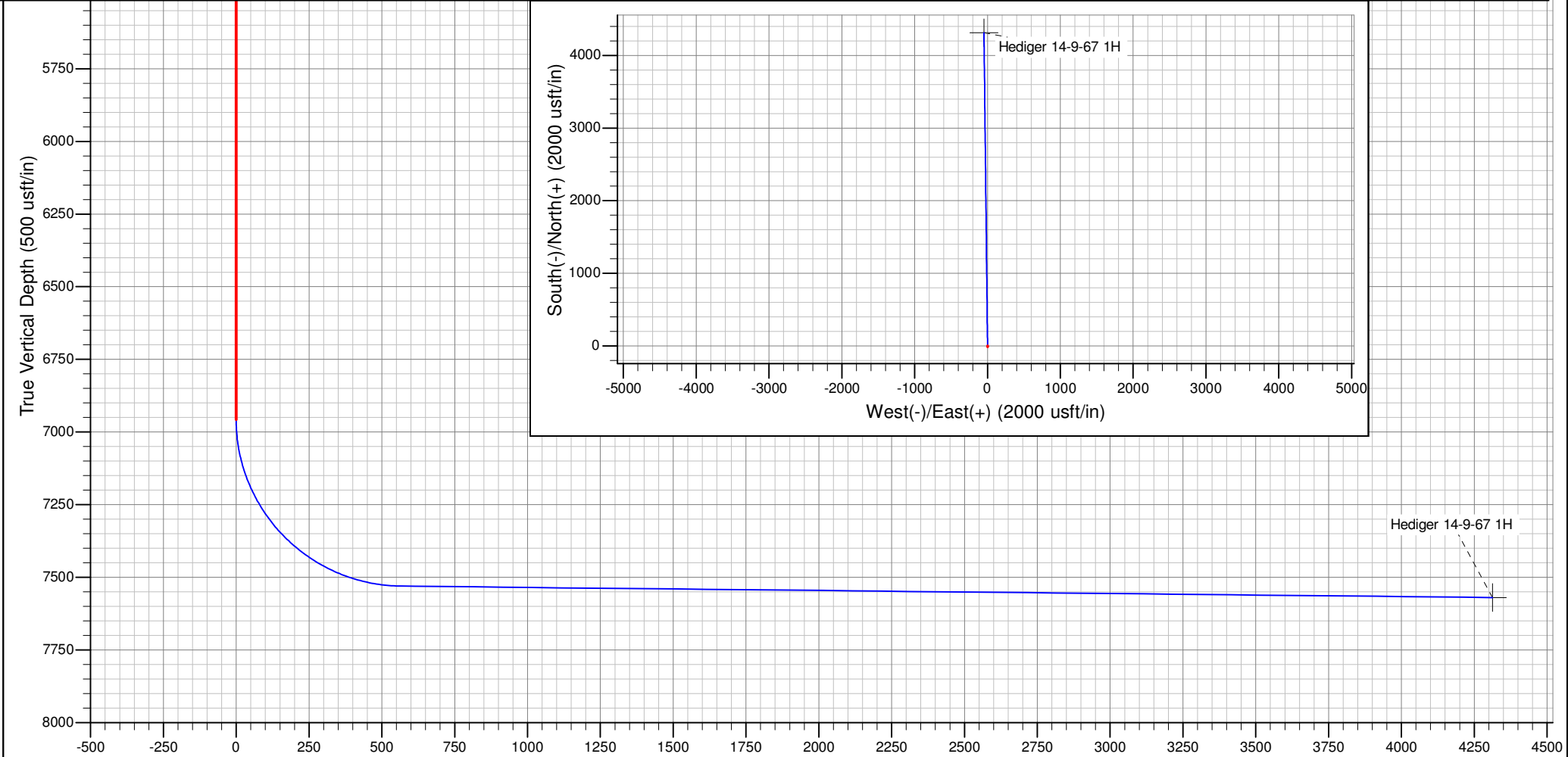
Geodetic System: US State Plane 1927 (Exact solution)

Datum: NAD 1927 (NADCON CONUS)

Ellipsoid: Clarke 1866

Zone: Colorado North 501

System Datum: Mean Sea Level



SECTION DETAILS

Sec	MD	Inc	Azi	TVD	+N/-S	+E/-W	Dleg	TFace	VSect	Target
1	0.0	0.00	0.00	0.0	0.0	0.0	0.00	0.00	0.0	
2	6957.8	0.00	0.00	6957.8	0.0	0.0	0.00	0.00	0.0	
3	7851.8	89.40	359.35	7530.8	566.9	-6.4	10.00	359.35	567.0	
4	11598.1	89.40	359.35	7570.0	4312.7	-48.7	0.00	0.00	4313.0	Hediger 14-9-67 1H

# **Chesapeake Energy -Rockies District**

**Weld - DJ Basin**

**Hediger 14-9-67 1H**

**Hediger 14-9-67 1H**

**Hediger 14-9-67 1H**

**Plan: Hediger 14-9-67 1H**

## **Standard Planning Report**

**15 April, 2011**

# Chesapeake Operating

## Planning Report

<b>Database:</b>	Drilling Database	<b>Local Co-ordinate Reference:</b>	Well Hediger 14-9-67 1H
<b>Company:</b>	Chesapeake Energy -Rockies District	<b>TVD Reference:</b>	WELL @ 0.0usft (Original Well Elev)
<b>Project:</b>	Weld - DJ Basin	<b>MD Reference:</b>	WELL @ 0.0usft (Original Well Elev)
<b>Site:</b>	Hediger 14-9-67 1H	<b>North Reference:</b>	Grid
<b>Well:</b>	Hediger 14-9-67 1H	<b>Survey Calculation Method:</b>	Minimum Curvature
<b>Wellbore:</b>	Hediger 14-9-67 1H		
<b>Design:</b>	Hediger 14-9-67 1H		

<b>Project</b>	Weld - DJ Basin		
<b>Map System:</b>	US State Plane 1927 (Exact solution)	<b>System Datum:</b>	Mean Sea Level
<b>Geo Datum:</b>	NAD 1927 (NADCON CONUS)		
<b>Map Zone:</b>	Colorado North 501		

Site		Hediger 14-9-67 1H			
Site Position:		Northing:	513,495.28 ft	Latitude:	40° 44' 28.22427601 N
From:	Map	Easting:	2,178,615.72 ft	Longitude:	104° 51' 19.64907769 W
Position Uncertainty:	0.0 usft	Slot Radius:	13.200 in	Grid Convergence:	0.42 °

Well	Hediger 14-9-67 1H					
Well Position	+N/-S	0.0 usft	Northing:	513,495.28 ft	Latitude:	40° 44' 28.22427601 N
	+E/-W	0.0 usft	Easting:	2,178,615.72 ft	Longitude:	104° 51' 19.64907769 W
Position Uncertainty		0.0 usft	Wellhead Elevation:		Ground Level:	0.0 usft

<b>Wellbore</b>	Hediger 14-9-67 1H				
<b>Magnetics</b>	<b>Model Name</b>	<b>Sample Date</b>	<b>Declination (°)</b>	<b>Dip Angle (°)</b>	<b>Field Strength (nT)</b>
	IGRF200510	4/15/2011	8.93	67.32	53,379

<b>Design</b>	Hediger 14-9-67 1H			
<b>Audit Notes:</b>				
<b>Version:</b>	<b>Phase:</b>	PROTOTYPE	<b>Tie On Depth:</b>	0.0
<b>Vertical Section:</b>	<b>Depth From (TVD) (usft)</b>	<b>+N/-S (usft)</b>	<b>+E/-W (usft)</b>	<b>Direction (°)</b>
	0.0	0.0	0.0	359.35

<b>Plan Sections</b>										
<b>Measured Depth (usft)</b>	<b>Inclination (°)</b>	<b>Azimuth (°)</b>	<b>Vertical Depth (usft)</b>	<b>+N/-S (usft)</b>	<b>+E/-W (usft)</b>	<b>Dogleg Rate (°/100usft)</b>	<b>Build Rate (°/100usft)</b>	<b>Turn Rate (°/100usft)</b>	<b>TFO (°)</b>	<b>Target</b>
0.0	0.00	0.00	0.0	0.0	0.0	0.00	0.00	0.00	0.00	
6,957.8	0.00	0.00	6,957.8	0.0	0.0	0.00	0.00	0.00	0.00	
7,851.8	89.40	359.35	7,530.8	566.9	-6.4	10.00	10.00	0.00	359.35	
11,598.1	89.40	359.35	7,570.0	4,312.7	-48.7	0.00	0.00	0.00	0.00	Hediger 14-9-67 1H

# Chesapeake Operating

## Planning Report

<b>Database:</b>	Drilling Database	<b>Local Co-ordinate Reference:</b>	Well Hediger 14-9-67 1H
<b>Company:</b>	Chesapeake Energy -Rockies District	<b>TVD Reference:</b>	WELL @ 0.0usft (Original Well Elev)
<b>Project:</b>	Weld - DJ Basin	<b>MD Reference:</b>	WELL @ 0.0usft (Original Well Elev)
<b>Site:</b>	Hediger 14-9-67 1H	<b>North Reference:</b>	Grid
<b>Well:</b>	Hediger 14-9-67 1H	<b>Survey Calculation Method:</b>	Minimum Curvature
<b>Wellbore:</b>	Hediger 14-9-67 1H		
<b>Design:</b>	Hediger 14-9-67 1H		

Planned Survey									
Measured Depth (usft)	Inclination (°)	Azimuth (°)	Vertical Depth (usft)	+N/-S (usft)	+E/-W (usft)	Vertical Section (usft)	Dogleg Rate (°/100usft)	Build Rate (°/100usft)	Turn Rate (°/100usft)
0.0	0.00	0.00	0.0	0.0	0.0	0.0	0.00	0.00	0.00
100.0	0.00	0.00	100.0	0.0	0.0	0.0	0.00	0.00	0.00
200.0	0.00	0.00	200.0	0.0	0.0	0.0	0.00	0.00	0.00
300.0	0.00	0.00	300.0	0.0	0.0	0.0	0.00	0.00	0.00
400.0	0.00	0.00	400.0	0.0	0.0	0.0	0.00	0.00	0.00
500.0	0.00	0.00	500.0	0.0	0.0	0.0	0.00	0.00	0.00
600.0	0.00	0.00	600.0	0.0	0.0	0.0	0.00	0.00	0.00
700.0	0.00	0.00	700.0	0.0	0.0	0.0	0.00	0.00	0.00
800.0	0.00	0.00	800.0	0.0	0.0	0.0	0.00	0.00	0.00
900.0	0.00	0.00	900.0	0.0	0.0	0.0	0.00	0.00	0.00
1,000.0	0.00	0.00	1,000.0	0.0	0.0	0.0	0.00	0.00	0.00
1,100.0	0.00	0.00	1,100.0	0.0	0.0	0.0	0.00	0.00	0.00
1,200.0	0.00	0.00	1,200.0	0.0	0.0	0.0	0.00	0.00	0.00
1,300.0	0.00	0.00	1,300.0	0.0	0.0	0.0	0.00	0.00	0.00
1,400.0	0.00	0.00	1,400.0	0.0	0.0	0.0	0.00	0.00	0.00
1,500.0	0.00	0.00	1,500.0	0.0	0.0	0.0	0.00	0.00	0.00
1,600.0	0.00	0.00	1,600.0	0.0	0.0	0.0	0.00	0.00	0.00
1,700.0	0.00	0.00	1,700.0	0.0	0.0	0.0	0.00	0.00	0.00
1,800.0	0.00	0.00	1,800.0	0.0	0.0	0.0	0.00	0.00	0.00
1,900.0	0.00	0.00	1,900.0	0.0	0.0	0.0	0.00	0.00	0.00
2,000.0	0.00	0.00	2,000.0	0.0	0.0	0.0	0.00	0.00	0.00
2,100.0	0.00	0.00	2,100.0	0.0	0.0	0.0	0.00	0.00	0.00
2,200.0	0.00	0.00	2,200.0	0.0	0.0	0.0	0.00	0.00	0.00
2,300.0	0.00	0.00	2,300.0	0.0	0.0	0.0	0.00	0.00	0.00
2,400.0	0.00	0.00	2,400.0	0.0	0.0	0.0	0.00	0.00	0.00
2,500.0	0.00	0.00	2,500.0	0.0	0.0	0.0	0.00	0.00	0.00
2,600.0	0.00	0.00	2,600.0	0.0	0.0	0.0	0.00	0.00	0.00
2,700.0	0.00	0.00	2,700.0	0.0	0.0	0.0	0.00	0.00	0.00
2,800.0	0.00	0.00	2,800.0	0.0	0.0	0.0	0.00	0.00	0.00
2,900.0	0.00	0.00	2,900.0	0.0	0.0	0.0	0.00	0.00	0.00
3,000.0	0.00	0.00	3,000.0	0.0	0.0	0.0	0.00	0.00	0.00
3,100.0	0.00	0.00	3,100.0	0.0	0.0	0.0	0.00	0.00	0.00
3,200.0	0.00	0.00	3,200.0	0.0	0.0	0.0	0.00	0.00	0.00
3,300.0	0.00	0.00	3,300.0	0.0	0.0	0.0	0.00	0.00	0.00
3,400.0	0.00	0.00	3,400.0	0.0	0.0	0.0	0.00	0.00	0.00
3,500.0	0.00	0.00	3,500.0	0.0	0.0	0.0	0.00	0.00	0.00
3,600.0	0.00	0.00	3,600.0	0.0	0.0	0.0	0.00	0.00	0.00
3,700.0	0.00	0.00	3,700.0	0.0	0.0	0.0	0.00	0.00	0.00
3,800.0	0.00	0.00	3,800.0	0.0	0.0	0.0	0.00	0.00	0.00
3,900.0	0.00	0.00	3,900.0	0.0	0.0	0.0	0.00	0.00	0.00
4,000.0	0.00	0.00	4,000.0	0.0	0.0	0.0	0.00	0.00	0.00
4,100.0	0.00	0.00	4,100.0	0.0	0.0	0.0	0.00	0.00	0.00
4,200.0	0.00	0.00	4,200.0	0.0	0.0	0.0	0.00	0.00	0.00
4,300.0	0.00	0.00	4,300.0	0.0	0.0	0.0	0.00	0.00	0.00
4,400.0	0.00	0.00	4,400.0	0.0	0.0	0.0	0.00	0.00	0.00
4,500.0	0.00	0.00	4,500.0	0.0	0.0	0.0	0.00	0.00	0.00
4,600.0	0.00	0.00	4,600.0	0.0	0.0	0.0	0.00	0.00	0.00
4,700.0	0.00	0.00	4,700.0	0.0	0.0	0.0	0.00	0.00	0.00
4,800.0	0.00	0.00	4,800.0	0.0	0.0	0.0	0.00	0.00	0.00
4,900.0	0.00	0.00	4,900.0	0.0	0.0	0.0	0.00	0.00	0.00
5,000.0	0.00	0.00	5,000.0	0.0	0.0	0.0	0.00	0.00	0.00
5,100.0	0.00	0.00	5,100.0	0.0	0.0	0.0	0.00	0.00	0.00
5,200.0	0.00	0.00	5,200.0	0.0	0.0	0.0	0.00	0.00	0.00
5,300.0	0.00	0.00	5,300.0	0.0	0.0	0.0	0.00	0.00	0.00

# Chesapeake Operating

## Planning Report

<b>Database:</b>	Drilling Database	<b>Local Co-ordinate Reference:</b>	Well Hediger 14-9-67 1H
<b>Company:</b>	Chesapeake Energy -Rockies District	<b>TVD Reference:</b>	WELL @ 0.0usft (Original Well Elev)
<b>Project:</b>	Weld - DJ Basin	<b>MD Reference:</b>	WELL @ 0.0usft (Original Well Elev)
<b>Site:</b>	Hediger 14-9-67 1H	<b>North Reference:</b>	Grid
<b>Well:</b>	Hediger 14-9-67 1H	<b>Survey Calculation Method:</b>	Minimum Curvature
<b>Wellbore:</b>	Hediger 14-9-67 1H		
<b>Design:</b>	Hediger 14-9-67 1H		

Planned Survey									
Measured Depth (usft)	Inclination (°)	Azimuth (°)	Vertical Depth (usft)	+N/-S (usft)	+E/-W (usft)	Vertical Section (usft)	Dogleg Rate (°/100usft)	Build Rate (°/100usft)	Turn Rate (°/100usft)
5,400.0	0.00	0.00	5,400.0	0.0	0.0	0.0	0.00	0.00	0.00
5,500.0	0.00	0.00	5,500.0	0.0	0.0	0.0	0.00	0.00	0.00
5,600.0	0.00	0.00	5,600.0	0.0	0.0	0.0	0.00	0.00	0.00
5,700.0	0.00	0.00	5,700.0	0.0	0.0	0.0	0.00	0.00	0.00
5,800.0	0.00	0.00	5,800.0	0.0	0.0	0.0	0.00	0.00	0.00
5,900.0	0.00	0.00	5,900.0	0.0	0.0	0.0	0.00	0.00	0.00
6,000.0	0.00	0.00	6,000.0	0.0	0.0	0.0	0.00	0.00	0.00
6,100.0	0.00	0.00	6,100.0	0.0	0.0	0.0	0.00	0.00	0.00
6,200.0	0.00	0.00	6,200.0	0.0	0.0	0.0	0.00	0.00	0.00
6,300.0	0.00	0.00	6,300.0	0.0	0.0	0.0	0.00	0.00	0.00
6,400.0	0.00	0.00	6,400.0	0.0	0.0	0.0	0.00	0.00	0.00
6,500.0	0.00	0.00	6,500.0	0.0	0.0	0.0	0.00	0.00	0.00
6,600.0	0.00	0.00	6,600.0	0.0	0.0	0.0	0.00	0.00	0.00
6,700.0	0.00	0.00	6,700.0	0.0	0.0	0.0	0.00	0.00	0.00
6,800.0	0.00	0.00	6,800.0	0.0	0.0	0.0	0.00	0.00	0.00
6,900.0	0.00	0.00	6,900.0	0.0	0.0	0.0	0.00	0.00	0.00
6,957.8	0.00	0.00	6,957.8	0.0	0.0	0.0	0.00	0.00	0.00
7,000.0	4.21	359.35	6,999.9	1.5	0.0	1.5	10.00	10.00	0.00
7,100.0	14.21	359.35	7,098.5	17.5	-0.2	17.5	10.00	10.00	0.00
7,200.0	24.21	359.35	7,192.8	50.4	-0.6	50.4	10.00	10.00	0.00
7,300.0	34.21	359.35	7,280.0	99.1	-1.1	99.2	10.00	10.00	0.00
7,400.0	44.21	359.35	7,357.4	162.3	-1.8	162.3	10.00	10.00	0.00
7,500.0	54.21	359.35	7,422.6	237.9	-2.7	237.9	10.00	10.00	0.00
7,600.0	64.21	359.35	7,473.7	323.7	-3.7	323.7	10.00	10.00	0.00
7,700.0	74.21	359.35	7,509.2	417.1	-4.7	417.1	10.00	10.00	0.00
7,800.0	84.21	359.35	7,527.9	515.2	-5.8	515.2	10.00	10.00	0.00
7,851.8	89.40	359.35	7,530.8	566.9	-6.4	567.0	10.00	10.00	0.00
7,900.0	89.40	359.35	7,531.3	615.1	-6.9	615.1	0.00	0.00	0.00
8,000.0	89.40	359.35	7,532.3	715.0	-8.1	715.1	0.00	0.00	0.00
8,100.0	89.40	359.35	7,533.4	815.0	-9.2	815.1	0.00	0.00	0.00
8,200.0	89.40	359.35	7,534.4	915.0	-10.3	915.1	0.00	0.00	0.00
8,300.0	89.40	359.35	7,535.5	1,015.0	-11.5	1,015.1	0.00	0.00	0.00
8,400.0	89.40	359.35	7,536.5	1,115.0	-12.6	1,115.1	0.00	0.00	0.00
8,500.0	89.40	359.35	7,537.6	1,215.0	-13.7	1,215.1	0.00	0.00	0.00
8,600.0	89.40	359.35	7,538.6	1,315.0	-14.9	1,315.1	0.00	0.00	0.00
8,700.0	89.40	359.35	7,539.7	1,415.0	-16.0	1,415.1	0.00	0.00	0.00
8,800.0	89.40	359.35	7,540.7	1,514.9	-17.1	1,515.0	0.00	0.00	0.00
8,900.0	89.40	359.35	7,541.7	1,614.9	-18.2	1,615.0	0.00	0.00	0.00
9,000.0	89.40	359.35	7,542.8	1,714.9	-19.4	1,715.0	0.00	0.00	0.00
9,100.0	89.40	359.35	7,543.8	1,814.9	-20.5	1,815.0	0.00	0.00	0.00
9,200.0	89.40	359.35	7,544.9	1,914.9	-21.6	1,915.0	0.00	0.00	0.00
9,300.0	89.40	359.35	7,545.9	2,014.9	-22.8	2,015.0	0.00	0.00	0.00
9,400.0	89.40	359.35	7,547.0	2,114.9	-23.9	2,115.0	0.00	0.00	0.00
9,500.0	89.40	359.35	7,548.0	2,214.9	-25.0	2,215.0	0.00	0.00	0.00
9,600.0	89.40	359.35	7,549.1	2,314.9	-26.2	2,315.0	0.00	0.00	0.00
9,700.0	89.40	359.35	7,550.1	2,414.8	-27.3	2,415.0	0.00	0.00	0.00
9,800.0	89.40	359.35	7,551.2	2,514.8	-28.4	2,515.0	0.00	0.00	0.00
9,900.0	89.40	359.35	7,552.2	2,614.8	-29.5	2,615.0	0.00	0.00	0.00
10,000.0	89.40	359.35	7,553.3	2,714.8	-30.7	2,715.0	0.00	0.00	0.00
10,100.0	89.40	359.35	7,554.3	2,814.8	-31.8	2,815.0	0.00	0.00	0.00
10,200.0	89.40	359.35	7,555.4	2,914.8	-32.9	2,915.0	0.00	0.00	0.00
10,300.0	89.40	359.35	7,556.4	3,014.8	-34.1	3,015.0	0.00	0.00	0.00
10,400.0	89.40	359.35	7,557.5	3,114.8	-35.2	3,115.0	0.00	0.00	0.00
10,500.0	89.40	359.35	7,558.5	3,214.7	-36.3	3,214.9	0.00	0.00	0.00

# Chesapeake Operating

## Planning Report

<b>Database:</b>	Drilling Database	<b>Local Co-ordinate Reference:</b>	Well Hediger 14-9-67 1H
<b>Company:</b>	Chesapeake Energy -Rockies District	<b>TVD Reference:</b>	WELL @ 0.0usft (Original Well Elev)
<b>Project:</b>	Weld - DJ Basin	<b>MD Reference:</b>	WELL @ 0.0usft (Original Well Elev)
<b>Site:</b>	Hediger 14-9-67 1H	<b>North Reference:</b>	Grid
<b>Well:</b>	Hediger 14-9-67 1H	<b>Survey Calculation Method:</b>	Minimum Curvature
<b>Wellbore:</b>	Hediger 14-9-67 1H		
<b>Design:</b>	Hediger 14-9-67 1H		

Planned Survey										
Measured Depth (usft)	Inclination (°)	Azimuth (°)	Vertical Depth (usft)	+N/-S (usft)	+E/-W (usft)	Vertical Section (usft)	Dogleg Rate (°/100usft)	Build Rate (°/100usft)	Turn Rate (°/100usft)	
10,600.0	89.40	359.35	7,559.5	3,314.7	-37.4	3,314.9	0.00	0.00	0.00	
10,700.0	89.40	359.35	7,560.6	3,414.7	-38.6	3,414.9	0.00	0.00	0.00	
10,800.0	89.40	359.35	7,561.6	3,514.7	-39.7	3,514.9	0.00	0.00	0.00	
10,900.0	89.40	359.35	7,562.7	3,614.7	-40.8	3,614.9	0.00	0.00	0.00	
11,000.0	89.40	359.35	7,563.7	3,714.7	-42.0	3,714.9	0.00	0.00	0.00	
11,100.0	89.40	359.35	7,564.8	3,814.7	-43.1	3,814.9	0.00	0.00	0.00	
11,200.0	89.40	359.35	7,565.8	3,914.7	-44.2	3,914.9	0.00	0.00	0.00	
11,300.0	89.40	359.35	7,566.9	4,014.6	-45.4	4,014.9	0.00	0.00	0.00	
11,400.0	89.40	359.35	7,567.9	4,114.6	-46.5	4,114.9	0.00	0.00	0.00	
11,500.0	89.40	359.35	7,569.0	4,214.6	-47.6	4,214.9	0.00	0.00	0.00	
11,598.1	89.40	359.35	7,570.0	4,312.7	-48.7	4,313.0	0.00	0.00	0.00	

Design Targets										
Target Name	Dip Angle (°)	Dip Dir. (°)	TVD (usft)	+N/-S (usft)	+E/-W (usft)	Northing (ft)	Easting (ft)	Latitude		
- hit/miss target										
- Shape										
Hediger 14-9-67 1H	0.00	0.00	7,570.0	4,312.7	-48.7	517,808.00	2,178,567.00	0° 45'	10.84175109 N	4° 51' 19.87478975 W
- plan hits target center										
- Point										