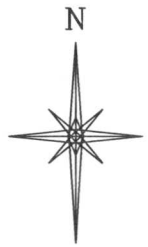


R. 67 W.



SCALE 1" = 1000'

T. 9 N.

BHL
LATITUDE (NAD 83)
NORTH 40.752997 DEG.
LONGITUDE (NAD 83)
WEST 104.856031 DEG.
LATITUDE (NAD 27)
NORTH 40.753015 DEG.
LONGITUDE (NAD 27)
WEST 104.855505 DEG.

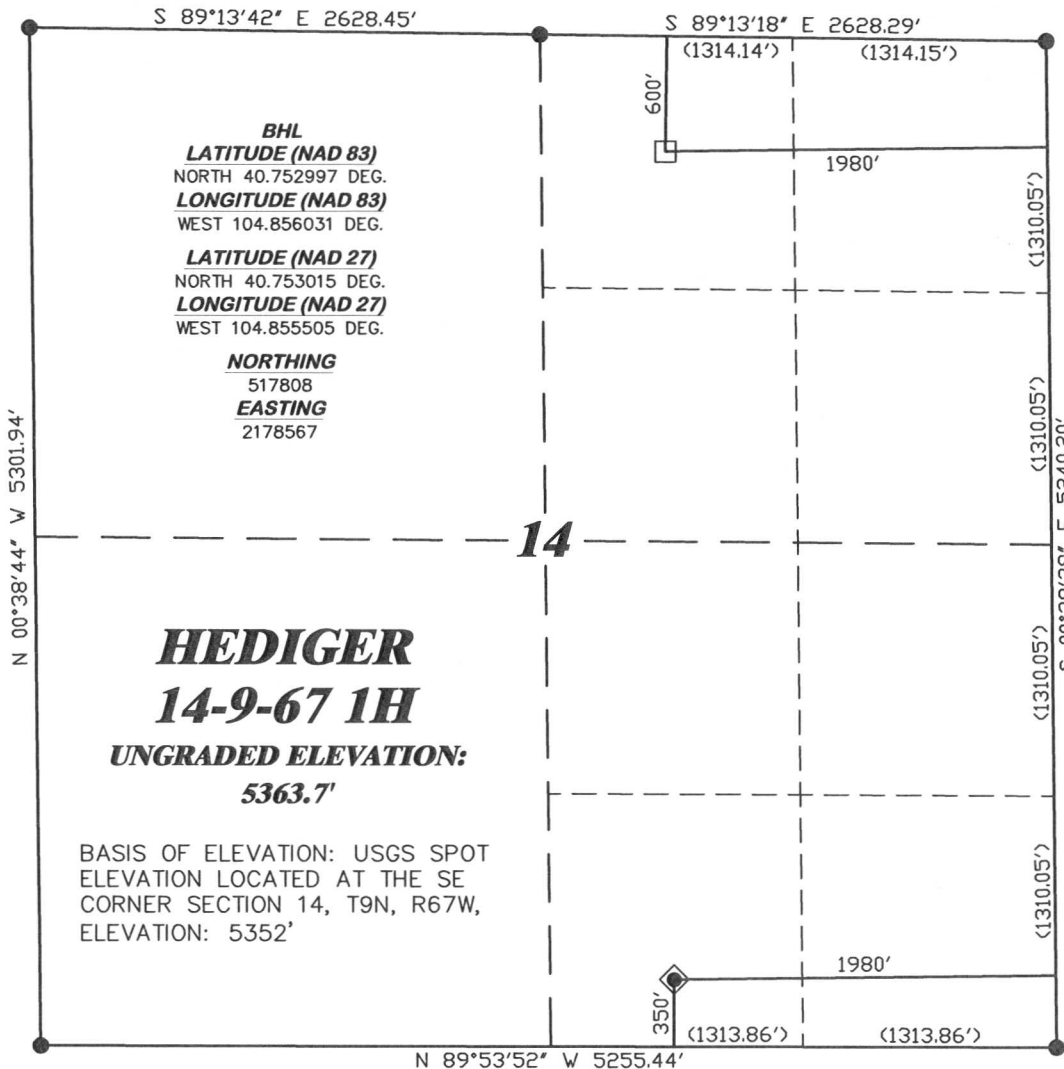
NORTHING
517808
EASTING
2178567

LATITUDE (NAD 83)
NORTH 40.741157 DEG.
LONGITUDE (NAD 83)
WEST 104.855969 DEG.

LATITUDE (NAD 27)
NORTH 40.741176 DEG.
LONGITUDE (NAD 27)
WEST 104.855442 DEG.

NORTHING
513495.28
EASTING
2178615.72

BASIS OF BEARING/DATUM
SPCS CO NORTH NAD 27



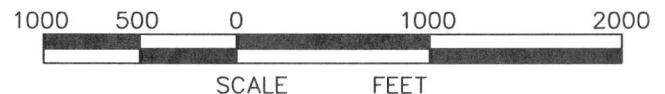
HEDIGER
14-9-67 1H
UNGRADED ELEVATION:
5363.7'

BASIS OF ELEVATION: USGS SPOT
ELEVATION LOCATED AT THE SE
CORNER SECTION 14, T9N, R67W,
ELEVATION: 5352'

NOTES

PRAIRIE LANDS
EXISTING TWO-TRACK WITHIN
400' RADIUS OF WELL SITE.

GPS OPERATOR PAUL ORME
OBSERVED A PDOP OF 2.4.
ALL GPS OBSERVATIONS ARE IN
COMPLIANCE WITH COGCC RULE No.215.

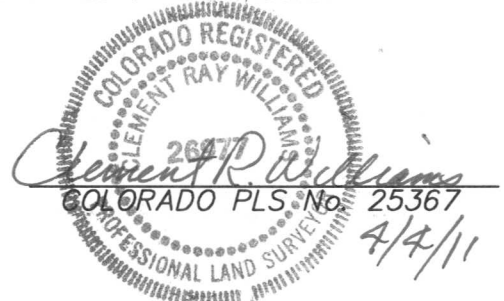


SURVEYOR'S STATEMENT

I, BRIAN L. FORBES, OF ROCK SPRINGS, WYOMING, HEREBY STATE: THIS MAP WAS MADE FROM NOTES TAKEN DURING AN ACTUAL FIELD SURVEY DONE UNDER MY DIRECT SUPERVISION ON FEBRUARY 24, 2011 AND THAT THIS PLAT CORRECTLY SHOWS THE LOCATION OF HEDIGER 14-9-67 1H AS STAKED ON THE GROUND.

LEGEND

- ◆ WELL LOCATION
- BOTTOM HOLE LOC. (APPROX)
- FOUND MONUMENT
- ▲ PREVIOUSLY FOUND MONUMENT



DRG RIFFIN & ASSOCIATES, INC.
(307) 362-5028 1414 ELK ST., ROCK SPRINGS, WY 82901

PLAT OF DRILLING LOCATION
FOR
CHESAPEAKE ENERGY, LLC.

350' F/SL & 1980' F/EL, SWSE, SECTION 14,
T. 9 N., R. 67 W., 6th P.M.
WELD COUNTY, COLORADO

DRAWN: 3/1/11 - MMM

SCALE: 1" = 1000'

REVISED: 4/4/11 - MMM

DRG JOB No. 18348

REVISED WELL NAME

EXHIBIT 1