

**2A ATTACHMENT
1**



WELL LOCATION LOOKING NORTH



WELL LOCATION LOOKING SOUTH




WELL LOCATION LOOKING EAST

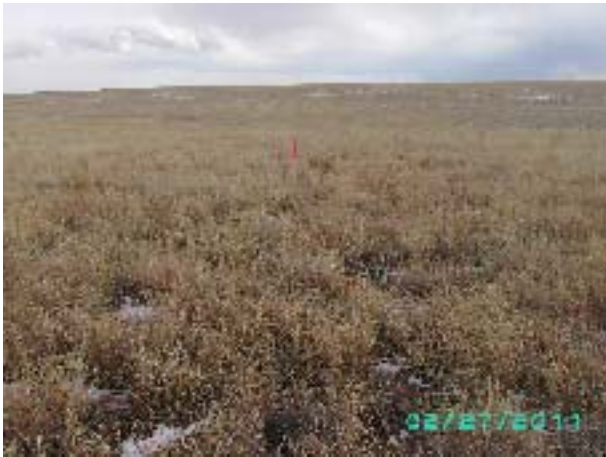


WELL LOCATION LOOKING WEST

PHOTOS TAKEN: 2/27/2011

 DRG RIFFIN & ASSOCIATES, INC.		LOCATION PICTURES	
		CHESAPEAKE ENERGY, LLC. HEDIGER 14-9-67 1H SECTION 14, T9N, R67W	
1414 ELK ST., SUITE 202 ROCK SPRINGS, WY 82901 (307) 362-5028	DRG JOB No. 18348	REVISED: 4/4/11 - MMM	EXHIBIT 6 SHEET 1 OF 2
	DRAWN: 3/1/11 - MMM		

**2A ATTACHMENT
1**



**PROPOSED ACCESS AT PAD
LOOKING SOUTH**



**PROPOSED ACCESS TAKE-OFF AT
COUNTY ROAD 21 LOOKING EAST**




**PROPOSED ACCESS TAKE-OFF AT
COUNTY ROAD 21 LOOKING NORTH**



**PROPOSED ACCESS TAKE-OFF AT
COUNTY ROAD 21 LOOKING SOUTH**

PHOTOS TAKEN: 2/27/2011

 RIFFIN & ASSOCIATES, INC.		LOCATION PICTURES	
		CHESAPEAKE ENERGY, LLC. HEDIGER 14-9-67 1H SECTION 14, T9N, R67W	
1414 ELK ST., SUITE 202 ROCK SPRINGS, WY 82901 (307) 362-5028	DRG JOB No. 18348	REVISED: 4/4/11 - MMM	EXHIBIT 6 SHEET 2 OF 2
	DRAWN: 3/1/11 - MMM		