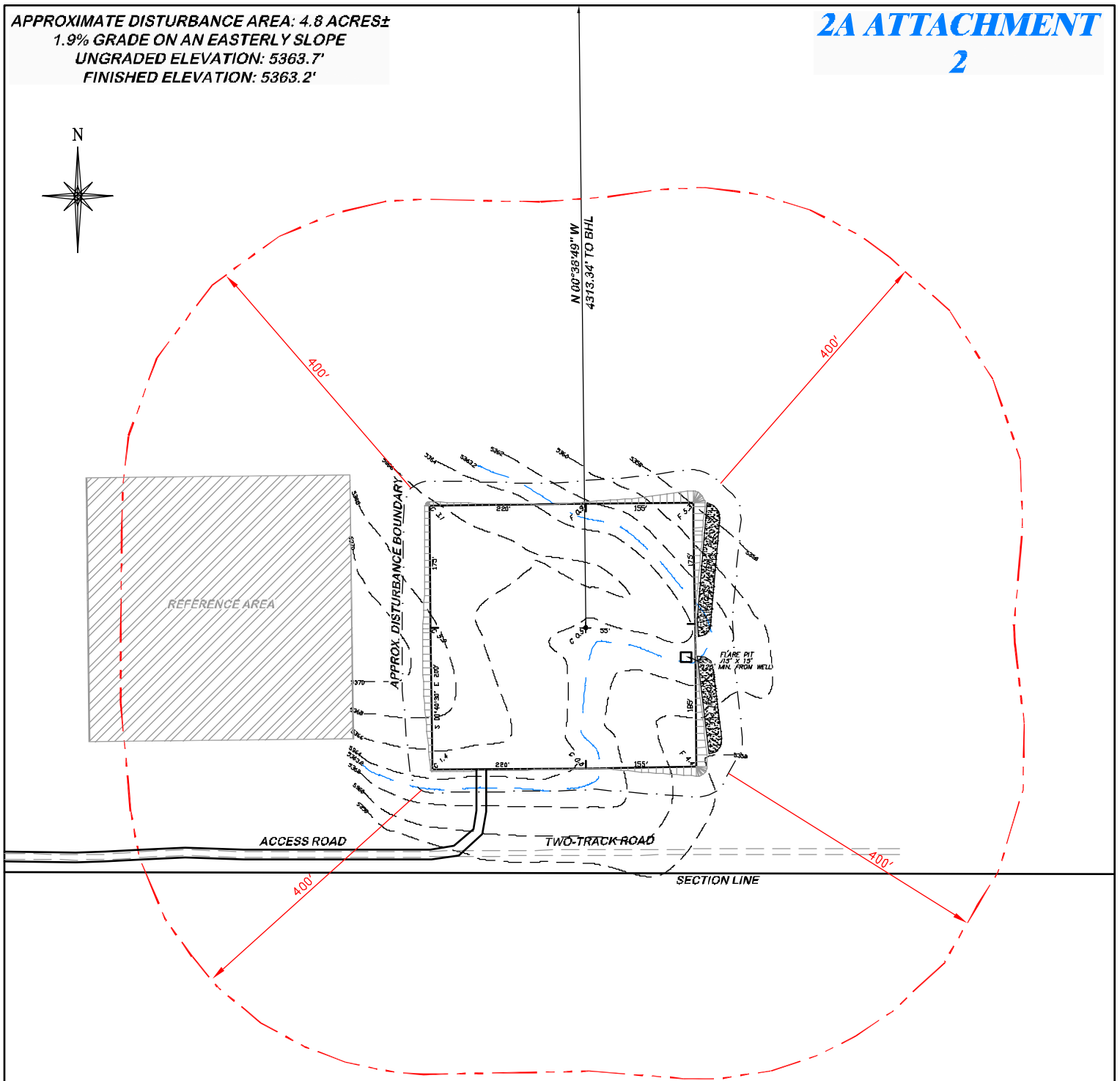


APPROXIMATE DISTURBANCE AREA: 4.8 ACRES±
 1.9% GRADE ON AN EASTERLY SLOPE
 UNGRADED ELEVATION: 5363.7'
 FINISHED ELEVATION: 5363.2'

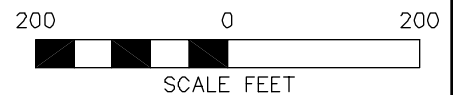
2A ATTACHMENT


2



**BEFORE DIGGING
 CALL FOR
 UTILITY LINE LOCATION**

NOTE: THE EARTH QUANTITIES ON
 THIS DRAWING ARE ESTIMATED
 AND THE USE OF IS AT THE
 RESPONSIBILITY OF THE USER.



 DRG RIFFIN & ASSOCIATES, INC. (307) 362-6028 1414 ELK ST., ROCK SPRINGS, WY 82901		LOCATION DRAWING	
		CHESAPEAKE ENERGY, LLC. HEDIGER 14-9-67 1H SECTION 14, T9N, R67W	
DRAWN: 3/1/11 - MMM	SCALE: 1" = 200'	UNGRADED ELEVATION: 5363.7' FINISHED ELEVATION: 5363.2'	
REVISED: 4/4/11 - MMM	DRG JOB No. 18348		
REVISED WELL NAME	EXHIBIT 2C		