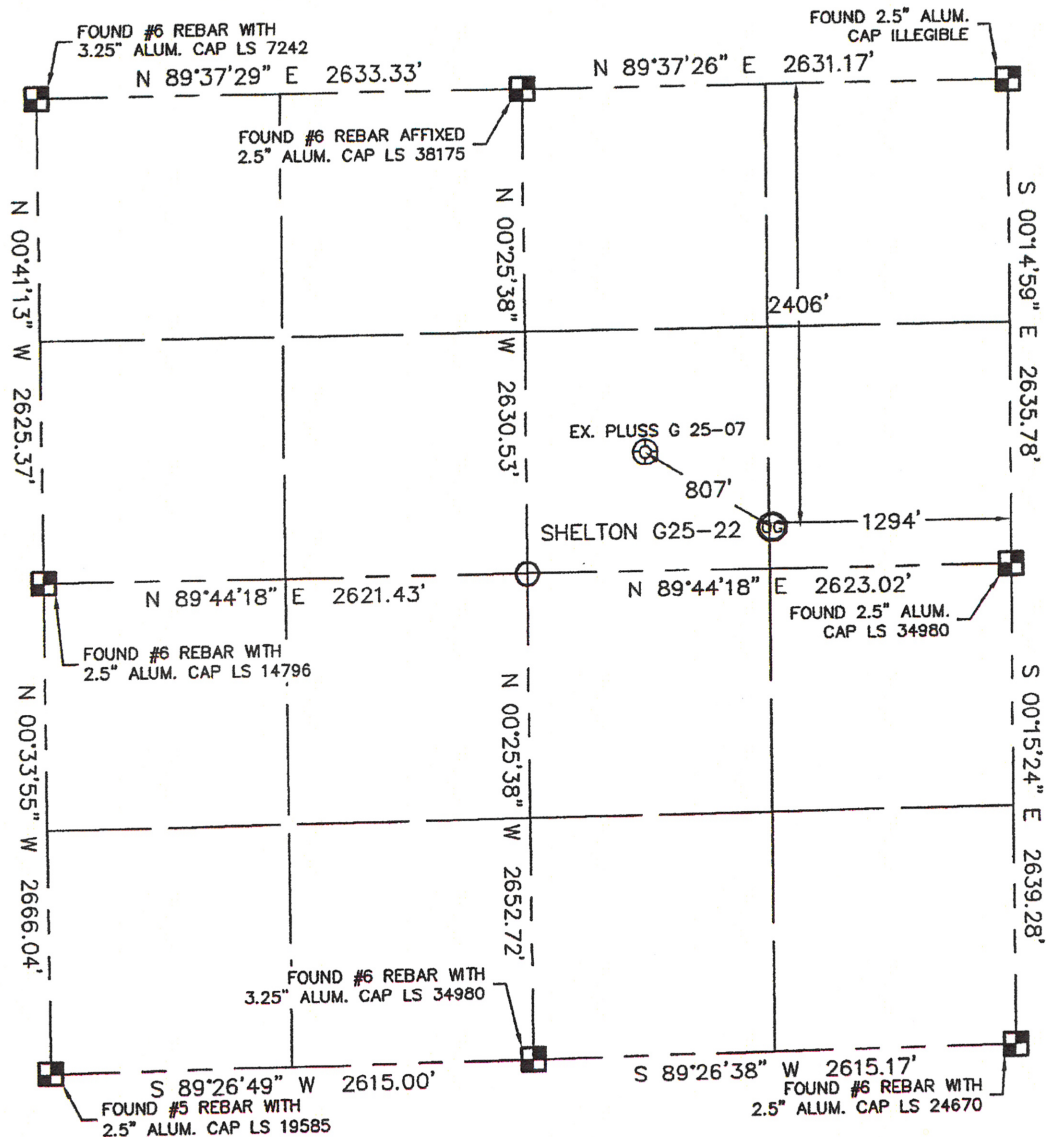


Lat40°, LLC 1635 Foxtrail Drive, Suite 325 Loveland, CO 80538

# WELL LOCATION CERTIFICATE

SECTION: 25  
TOWNSHIP: 4N  
RANGE: 65W

THIS MAP DOES NOT REPRESENT A BOUNDARY SURVEY



In accordance with a request from Beau Fritz with Noble Energy Inc. Lat40°, LLC has determined the surface location of the SHELTON G25-22 to be 2406' from the NORTH line and 1294' from the EAST line as measured at right angles from the section lines of Section 25, Township 4 North, Range 65 West of the Sixth Principal Meridian, County of Weld, State of Colorado.

I hereby state that this Well Location Certificate was prepared by me, or under my direct supervision, that the fieldwork was completed on 12/17/10, for and on behalf of Noble Energy Inc. That this is not a Land Survey Plat or an Improvement Survey Plat, and that it is not to be relied upon for establishment of fence, building, or other future improvement lines.

SURFACE LOCATION  
LATITUDE: 40.28385°N  
LONGITUDE: 104.60693°W  
PDOP: 2.2  
ELEV: 4824  
1/4, 1/4: SE1/4NE1/4  
NEAREST PROPERTY LINE: 227' SOUTH

## NOTE:

- 1) Bearings shown are Grid Bearings of the Colorado State Plane Coordinate System, North Zone, North American Datum 1983/2007. The lineal dimensions as contained herein are based upon the "U.S. Survey Foot."
- 2) Ground elevations are based on an observed GPS elevation (NAVD 1988 DATUM).
- 3) NEAREST EXISTING WELL: PLUSS G25-07 807'
- 4) IMPROVEMENTS: See LOCATION DRAWING for all visible improvements within 400' of disturbed area.
- 5) SURFACE USE: RANGELAND
- 6) INSTRUMENT OPERATOR: BRIAN BRINKMAN

## NOTE

According to Colorado law, you must commence any legal action based upon any defect in this W.L.C. within three years after you discover such defect. In no event, may any action based upon any defect in this survey be commenced more than ten years after the date of the certificate shown hereon. (13-80-105 C.R.S.)

## LEGEND

- = ALIQUOT MONUMENT AS DESCRIBED  
○ = CALCULATED POSITION



Brian T. Brinkman—On behalf of Lat40°, LLC  
Colorado Licensed Professional  
Land Surveyor No. 38175 PROJECT#: 2010153

Lat40°, LLC

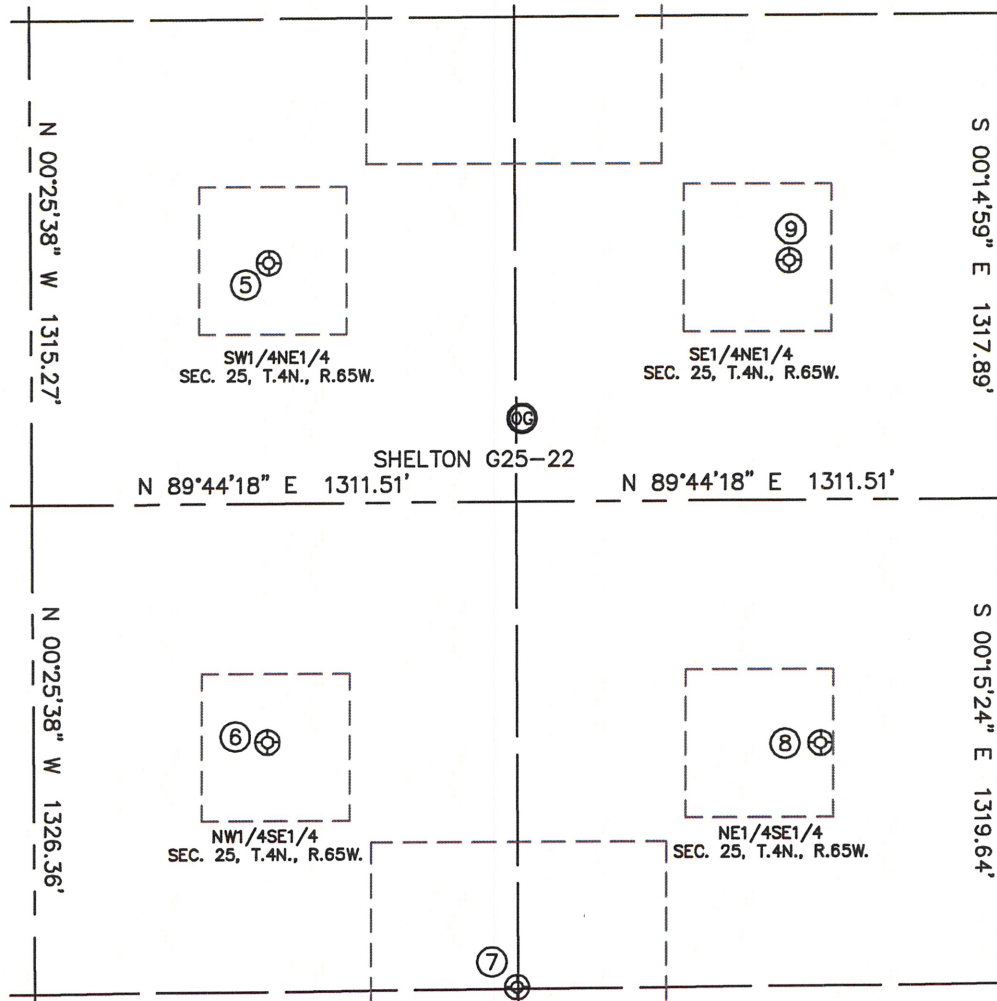
1635 Foxtrail Drive, Suite 325

Loveland, CO 80538

# SITE SKETCH

SHELTON G25-22

SECTION: 25  
TOWNSHIP: 4N  
RANGE: 65W



⑤

PLUSS G25-07  
SW1/4NE1/4  
1979' FNL  
1980' FEL  
LAT-40.28503°N  
LONG-104.60938°W  
PDOP: 3.2  
ELEV: 4812

⑥

OCOMA G25-10  
NW1/4SE1/4  
2002' FSL  
1988' FEL  
LAT-40.28146°N  
LONG-104.60944°W  
PDOP: 2.1  
ELEV: 4810

⑦

OCOMA G25-23  
NW1/4SE1/4  
1328' FSL  
1314' FEL  
LAT-40.27961°N  
LONG-104.60703°W  
PDOP: 2.0  
ELEV: 4822

⑧

OCOMA G25-9  
NE1/4SE1/4  
1981' FSL  
490' FEL  
LAT-40.28140°N  
LONG-104.60407°W  
PDOP: 3.0  
ELEV: 4840

⑨

PLUSS G25-8  
SE1/4NE1/4  
1984' FNL  
571' FEL  
LAT-40.28500°N  
LONG-104.60433°W  
PDOP: 1.9  
ELEV: 4825

