

CONSTRUCTION LAYOUT DRAWING

1 of 2

PAD 300'X400' ELEV=5007.4'

DISTURBED AREA=3.7± ACRES

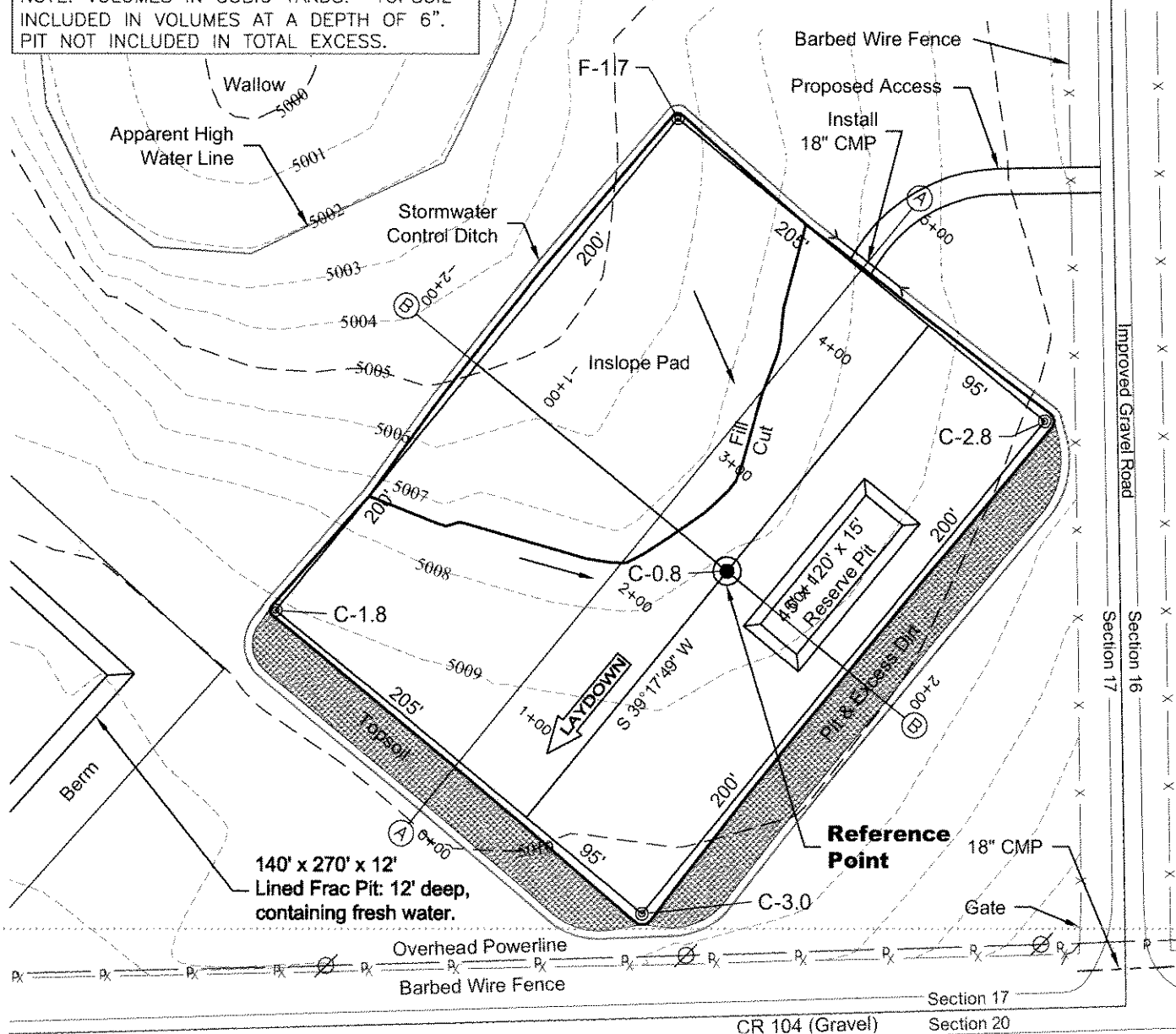
ESTIMATED DIRT QUANTITIES

CUTx10%	FILL	PIT	TOPSOIL	EXCESS
4,480	1,800	2,590	2,330	350

NOTE: VOLUMES IN CUBIC YARDS. TOPSOIL INCLUDED IN VOLUMES AT A DEPTH OF 6". PIT NOT INCLUDED IN TOTAL EXCESS.

VEGETATION:
DRY LAND PASTURE

SURFACE USE:
GRAZING



North



4/8/11



LAND SURVEYING AND MAPPING
LAFAYETTE - WINTER PARK
Ph 303 666 0379 Fx 303 665 6320

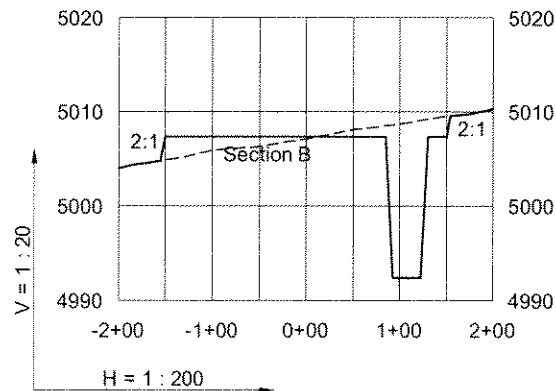
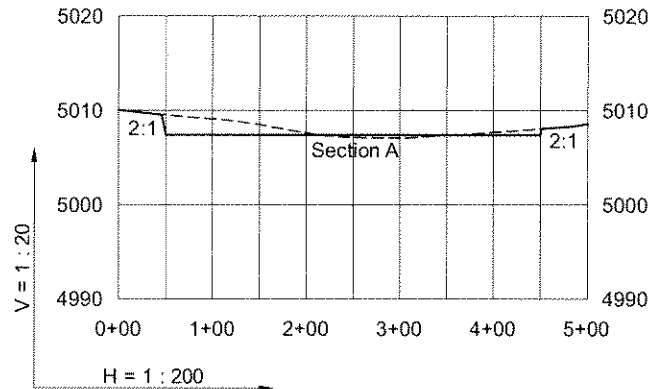
NOTE:
10% ALLOWANCE IS MADE FOR SOIL EXPANSION.

CARRIZO OIL & GAS, INC
NELSON 17-44-9-60 PAD

SE1/4 SE1/4 SEC. 17 T9N R60W
6th PM WELD COUNTY COLORADO

CONSTRUCTION LAYOUT DRAWING

2 of 2



4/8/11

----- Existing Ground
 _____ Proposed Grade



CARRIZO OIL & GAS, INC
NELSON 17-44-9-60 PAD

SE1/4 SE1/4 SEC. 17 T9N R60W
6th PM WELD COUNTY COLORADO