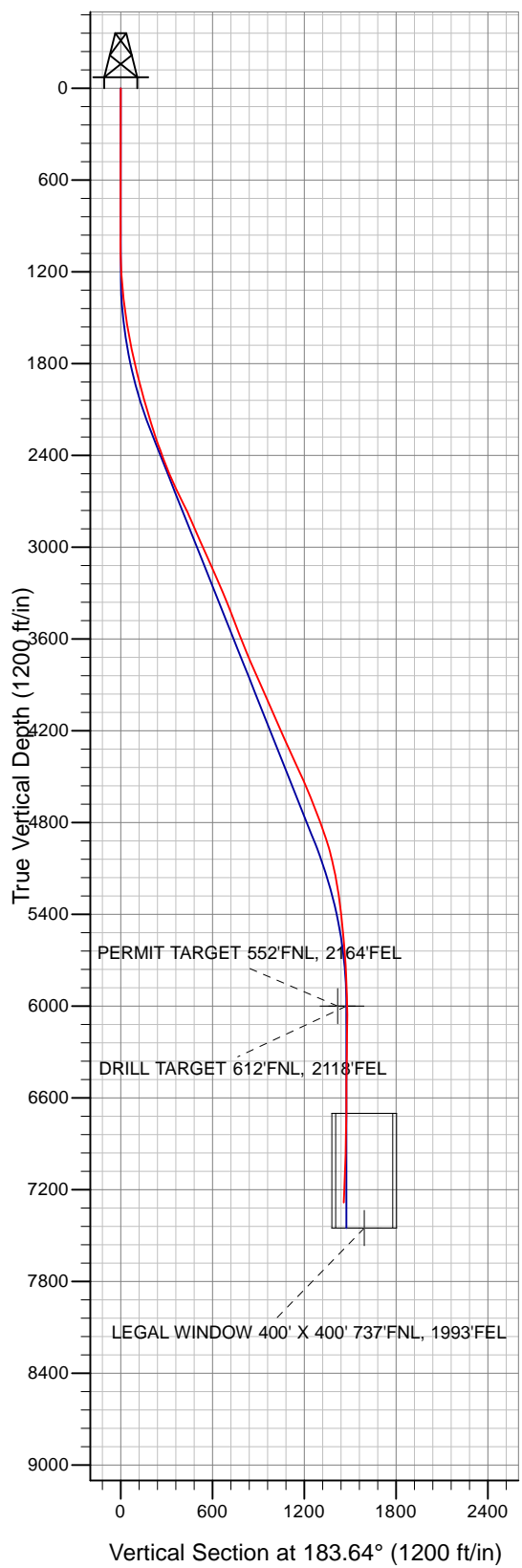
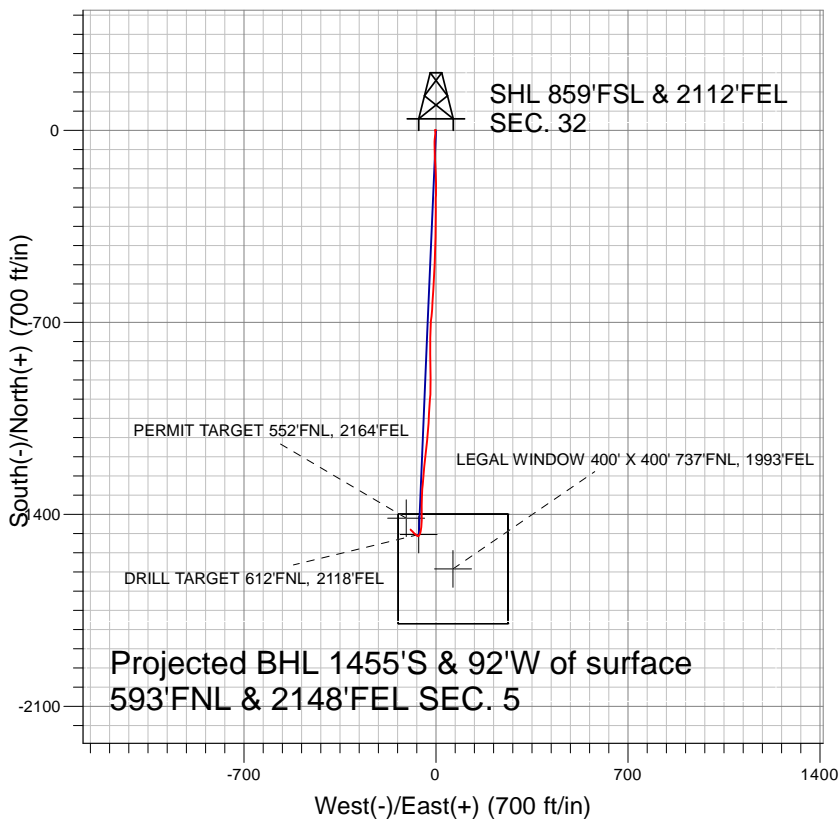


Well Name: **SRC 31-5D**  
 Surface Location: SRC Pad Sec.32-T6N-R66W  
 North American Datum 1983 , US State Plane 1983 , Colorado Northern Zone  
 Ground Elevation: 4772.0  
 +N/-S+E/-W Northing Easting Latitude Longitude Slot  
 0.0 0.0 1403744.74 3194844.22 40° 26' 22.452 N 104° 47' 59.964 W  
 Original Well Elev WELL @ 4785.0ft (Original Well Elev)



## Synergy Resources



### LEGEND

- △ SRC 31-5D, SRC 31-5D, SRC 31-5D V0
- SRC 31-5D

## Final Survey Plot

Projected Final Survey -  
 7552'MD & 7284'TVD @ 1458' VS  
 3.2 deg Inc 316.2 deg AZ

Project: SEC.32-T6N-R66W  
 Site: SRC Pad Sec.32-T6N-R66W  
 Well: SRC 31-5D  
 Plan: SRC 31-5D



## **Synergy Resources**

**SEC.32-T6N-R66W**

**SRC Pad Sec.32-T6N-R66W**

**SRC 31-5D**

**SRC 31-5D**

**Design: SRC 31-5D**

## **Standard Survey Report**

**19 November, 2009**

<b>Company:</b>	Synergy Resources	<b>Local Co-ordinate Reference:</b>	Well SRC 31-5D
<b>Project:</b>	SEC.32-T6N-R66W	<b>TVD Reference:</b>	WELL @ 4785.0ft (Original Well Elev)
<b>Site:</b>	SRC Pad Sec.32-T6N-R66W	<b>MD Reference:</b>	WELL @ 4785.0ft (Original Well Elev)
<b>Well:</b>	SRC 31-5D	<b>North Reference:</b>	True
<b>Wellbore:</b>	SRC 31-5D	<b>Survey Calculation Method:</b>	Minimum Curvature
<b>Design:</b>	SRC 31-5D	<b>Database:</b>	EDM den0-adp01 Server Data

<b>Project</b>	SEC.32-T6N-R66W, Weld County, Colorado		
<b>Map System:</b>	US State Plane 1983	<b>System Datum:</b>	Mean Sea Level
<b>Geo Datum:</b>	North American Datum 1983		Using Well Reference Point
<b>Map Zone:</b>	Colorado Northern Zone		Using geodetic scale factor

<b>Site</b>	SRC Pad Sec.32-T6N-R66W		
<b>Site Position:</b>		<b>Northing:</b>	1,403,708.03ft
<b>From:</b>	Lat/Long	<b>Easting:</b>	3,194,808.32ft
<b>Position Uncertainty:</b>	0.0 ft	<b>Slot Radius:</b>	"
		<b>Latitude:</b>	40° 26' 22.092 N
		<b>Longitude:</b>	104° 48' 0.432 W
		<b>Grid Convergence:</b>	0.45 °

<b>Well</b>	SRC 31-5D		
<b>Well Position</b>	<b>+N/-S</b>	0.0 ft	<b>Northing:</b>
	<b>+E/-W</b>	0.0 ft	<b>Easting:</b>
<b>Position Uncertainty</b>	0.0 ft	<b>Wellhead Elevation:</b>	ft
		<b>Latitude:</b>	40° 26' 22.452 N
		<b>Longitude:</b>	104° 47' 59.964 W
		<b>Ground Level:</b>	4,772.0ft

<b>Wellbore</b>	SRC 31-5D		
<b>Magnetics</b>	<b>Model Name</b>	<b>Sample Date</b>	<b>Declination (°)</b>
	IGRF200510	10/16/2008	9.21
	IGRF200510	10/28/2009	9.07
		<b>Dip Angle (°)</b>	67.17
			67.14
		<b>Field Strength (nT)</b>	53,446
			53,340

<b>Design</b>	SRC 31-5D		
<b>Audit Notes:</b>			
<b>Version:</b>	1.0	<b>Phase:</b>	ACTUAL
		<b>Tie On Depth:</b>	0.0
<b>Vertical Section:</b>	<b>Depth From (TVD) (ft)</b>	<b>+N/-S (ft)</b>	<b>+E/-W (ft)</b>
	0.0	0.0	0.0
		<b>Direction (°)</b>	183.64

<b>Survey Program</b>	<b>Date</b>	11/19/2009		
<b>From (ft)</b>	<b>To (ft)</b>	<b>Survey (Wellbore)</b>	<b>Tool Name</b>	<b>Description</b>
695.0	7,552.0	Survey #1 (SRC 31-5D)	MWD	MWD - Standard

<b>Survey</b>									
<b>Measured Depth (ft)</b>	<b>Inclination (°)</b>	<b>Azimuth (°)</b>	<b>Vertical Depth (ft)</b>	<b>+N/-S (ft)</b>	<b>+E/-W (ft)</b>	<b>Vertical Section (ft)</b>	<b>Dogleg Rate (°/100ft)</b>	<b>Build Rate (°/100ft)</b>	<b>Turn Rate (°/100ft)</b>
0.0	0.00	0.00	0.0	0.0	0.0	0.0	0.00	0.00	0.00
695.0	0.30	302.60	695.0	1.0	-1.5	-0.9	0.04	0.04	0.00
826.0	0.30	273.30	826.0	1.2	-2.2	-1.0	0.12	0.00	-22.37
957.0	0.50	318.20	957.0	1.6	-2.9	-1.4	0.27	0.15	34.27
1,088.0	1.00	176.40	1,088.0	0.9	-3.2	-0.7	1.09	0.38	-108.24
1,219.0	3.70	171.20	1,218.9	-4.4	-2.5	4.6	2.07	2.06	-3.97
1,350.0	6.30	184.30	1,349.4	-15.7	-2.4	15.9	2.16	1.98	10.00
1,480.0	7.50	186.80	1,478.4	-31.3	-3.9	31.5	0.95	0.92	1.92
1,611.0	10.40	179.10	1,607.8	-51.6	-4.7	51.8	2.39	2.21	-5.88
1,742.0	12.70	178.40	1,736.1	-77.8	-4.1	77.9	1.76	1.76	-0.53
1,873.0	14.30	178.40	1,863.5	-108.4	-3.3	108.4	1.22	1.22	0.00
2,004.0	15.10	175.40	1,990.2	-141.6	-1.5	141.4	0.84	0.61	-2.29

<b>Company:</b>	Synergy Resources	<b>Local Co-ordinate Reference:</b>	Well SRC 31-5D
<b>Project:</b>	SEC.32-T6N-R66W	<b>TVD Reference:</b>	WELL @ 4785.0ft (Original Well Elev)
<b>Site:</b>	SRC Pad Sec.32-T6N-R66W	<b>MD Reference:</b>	WELL @ 4785.0ft (Original Well Elev)
<b>Well:</b>	SRC 31-5D	<b>North Reference:</b>	True
<b>Wellbore:</b>	SRC 31-5D	<b>Survey Calculation Method:</b>	Minimum Curvature
<b>Design:</b>	SRC 31-5D	<b>Database:</b>	EDM den0-adp01 Server Data

**Survey**

Measured Depth (ft)	Inclination (°)	Azimuth (°)	Vertical Depth (ft)	+N/-S (ft)	+E/-W (ft)	Vertical Section (ft)	Dogleg Rate (°/100ft)	Build Rate (°/100ft)	Turn Rate (°/100ft)
2,135.0	16.40	179.50	2,116.3	-177.1	0.1	176.7	1.31	0.99	3.13
2,266.0	17.50	180.00	2,241.6	-215.3	0.2	214.8	0.85	0.84	0.38
2,396.0	21.10	181.80	2,364.3	-258.2	-0.5	257.7	2.81	2.77	1.38
2,528.0	20.70	179.90	2,487.6	-305.3	-1.2	304.8	0.60	-0.30	-1.44
2,658.0	26.00	180.60	2,606.9	-356.8	-1.5	356.2	4.08	4.08	0.54
2,789.0	26.40	180.20	2,724.5	-414.6	-1.9	413.9	0.33	0.31	-0.31
2,920.0	22.20	183.90	2,843.8	-468.5	-3.7	467.8	3.41	-3.21	2.82
3,051.0	25.50	181.70	2,963.6	-521.4	-6.2	520.7	2.61	2.52	-1.68
3,181.0	23.30	184.70	3,082.0	-575.0	-9.1	574.4	1.94	-1.69	2.31
3,312.0	23.50	182.00	3,202.3	-626.9	-12.2	626.4	0.83	0.15	-2.06
3,443.0	23.00	186.50	3,322.6	-678.4	-16.0	678.1	1.41	-0.38	3.44
3,574.0	20.90	181.80	3,444.1	-727.2	-19.6	727.0	2.09	-1.60	-3.59
3,706.0	21.10	180.80	3,567.4	-774.5	-20.7	774.3	0.31	0.15	-0.76
3,836.0	22.50	179.50	3,688.1	-822.8	-20.8	822.5	1.14	1.08	-1.00
3,967.0	23.70	179.00	3,808.6	-874.2	-20.1	873.7	0.93	0.92	-0.38
4,099.0	24.60	179.40	3,929.0	-928.2	-19.4	927.5	0.69	0.68	0.30
4,229.0	23.30	184.70	4,047.8	-980.9	-21.2	980.2	1.93	-1.00	4.08
4,361.0	24.10	183.80	4,168.7	-1,033.8	-25.1	1,033.3	0.67	0.61	-0.68
4,491.0	23.30	183.20	4,287.7	-1,085.9	-28.3	1,085.5	0.64	-0.62	-0.46
4,622.0	25.50	186.20	4,407.0	-1,139.8	-32.8	1,139.6	1.93	1.68	2.29
4,753.0	24.00	186.40	4,526.0	-1,194.4	-38.8	1,194.4	1.15	-1.15	0.15
4,884.0	21.70	185.60	4,646.7	-1,244.9	-44.1	1,245.2	1.77	-1.76	-0.61
5,015.0	21.00	184.70	4,768.7	-1,292.4	-48.4	1,292.9	0.59	-0.53	-0.69
5,146.0	18.50	181.90	4,892.0	-1,336.6	-51.0	1,337.2	2.04	-1.91	-2.14
5,277.0	14.20	179.20	5,017.7	-1,373.5	-51.5	1,374.0	3.33	-3.28	-2.06
5,408.0	11.00	181.00	5,145.5	-1,402.0	-51.5	1,402.5	2.46	-2.44	1.37
5,539.0	8.40	182.00	5,274.6	-1,424.1	-52.1	1,424.5	1.99	-1.98	0.76
5,670.0	6.50	182.40	5,404.5	-1,441.1	-52.7	1,441.5	1.45	-1.45	0.31
5,801.0	5.30	189.00	5,534.8	-1,454.5	-54.0	1,455.0	1.05	-0.92	5.04
5,931.0	4.00	193.50	5,664.4	-1,464.8	-56.0	1,465.4	1.04	-1.00	3.46
6,062.0	3.00	207.10	5,795.1	-1,472.3	-58.6	1,473.0	0.99	-0.76	10.38
6,193.0	2.40	219.30	5,926.0	-1,477.5	-61.9	1,478.4	0.63	-0.46	9.31
6,266.9	1.80	247.97	5,999.8	-1,479.1	-63.9	1,480.2	1.61	-0.81	38.80
<b>DRILL TARGET 612'FNL, 2118'FEL</b>									
6,267.4	1.80	248.23	6,000.4	-1,479.1	-63.9	1,480.2	1.61	-0.41	49.64
<b>PERMIT TARGET 552'FNL, 2164'FEL</b>									
6,324.0	1.80	277.60	6,056.9	-1,479.3	-65.7	1,480.5	1.61	0.00	51.90
6,455.0	1.50	325.70	6,187.9	-1,477.6	-68.7	1,479.0	1.05	-0.23	36.72
6,586.0	1.40	269.50	6,318.8	-1,476.2	-71.2	1,477.8	1.04	-0.08	-42.90
6,716.0	1.70	346.00	6,448.8	-1,474.4	-73.3	1,476.0	1.49	0.23	58.85
6,847.0	0.40	203.70	6,579.8	-1,472.9	-73.9	1,474.6	1.55	-0.99	-108.63
6,978.0	0.90	312.00	6,710.8	-1,472.6	-74.9	1,474.4	0.83	0.38	82.67
7,108.0	1.80	307.70	6,840.7	-1,470.7	-77.3	1,472.6	0.70	0.69	-3.31
7,239.0	2.60	316.00	6,971.6	-1,467.3	-81.0	1,469.5	0.66	0.61	6.34
7,371.0	3.10	315.30	7,103.5	-1,462.6	-85.5	1,465.1	0.38	0.38	-0.53
7,505.0	3.20	316.20	7,237.3	-1,457.3	-90.7	1,460.2	0.08	0.07	0.67
7,552.0	3.20	316.20	7,284.2	-1,455.4	-92.5	1,458.4	0.00	0.00	0.00
<b>LEGAL WINDOW 400' X 400' 737'FNL, 1993'FEL</b>									

<b>Company:</b>	Synergy Resources	<b>Local Co-ordinate Reference:</b>	Well SRC 31-5D
<b>Project:</b>	SEC.32-T6N-R66W	<b>TVD Reference:</b>	WELL @ 4785.0ft (Original Well Elev)
<b>Site:</b>	SRC Pad Sec.32-T6N-R66W	<b>MD Reference:</b>	WELL @ 4785.0ft (Original Well Elev)
<b>Well:</b>	SRC 31-5D	<b>North Reference:</b>	True
<b>Wellbore:</b>	SRC 31-5D	<b>Survey Calculation Method:</b>	Minimum Curvature
<b>Design:</b>	SRC 31-5D	<b>Database:</b>	EDM den0-adp01 Server Data

### Wellbore Targets

Target Name	Dip Angle	Dip Dir.	TVD	+N/-S	+E/-W	Northing	Easting	Latitude	Longitude
- hit/miss target	(°)	(°)	(ft)	(ft)	(ft)	(ft)	(ft)		
- Shape									
PERMIT TARGET 55'	0.00	0.00	6,000.0	-1,413.9	-108.5	1,402,330.05	3,194,746.84	40° 26' 8.480 N	104° 48' 1.368 W
- actual wellpath misses target center by 79.0ft at 6268.2ft MD (6001.1 TVD, -1479.1 N, -64.0 E)									
- Point									
DRILL TARGET 612'F	0.00	0.00	6,000.0	-1,473.9	-62.5	1,402,270.45	3,194,793.35	40° 26' 7.887 N	104° 48' 0.772 W
- actual wellpath misses target center by 5.4ft at 6266.9ft MD (5999.9 TVD, -1479.1 N, -63.9 E)									
- Point									
LEGAL WINDOW 40C	0.00	0.00	7,450.0	-1,598.9	62.5	1,402,146.45	3,194,919.33	40° 26' 6.652 N	104° 47' 59.156 W
- actual wellpath misses target center by 268.5ft at 7552.0ft MD (7284.2 TVD, -1455.4 N, -92.5 E)									
- Rectangle (sides W400.0 H400.0 D0.0)									

Checked By: \_\_\_\_\_ Approved By: \_\_\_\_\_ Date: \_\_\_\_\_