

**SYNERGY RESOURCES CORPORATION
20203 HIGHWAY 60
PLATTEVILLE, Colorado**

SRC 31-5D

ENSIGN 122

Post Job Summary

Cement Production Casing

Prepared for: Don Libhart
Date Prepared: 11/16/09
Version: 1

Service Supervisor: Rick Congdon

Submitted by: Tim Gilchrist

HALLIBURTON

HALLIBURTON

**SYNERGY RESOURCES CORPORATION
20203 HIGHWAY 60
PLATTEVILLE, Colorado**

SRC 31-5D

ENSIGN 122

Post Job Summary Cement Production Casing

Prepared for: Don Libhart
Date Prepared: 11/16/09
Version: 1

Service Supervisor: Rick Congdon

Submitted by: Tim Gilchrist

HALLIBURTON

HALLIBURTON

Service Supervisor Reports

Job Log

Date/Time	Chart #	Activity Code	Pump Rate	Cum Vol	Pump	Pressure (psig)	Comments
11/16/2009 04:55		Start Job					RIG CIRCULATED WELL 2 HOUR PRIOR TO CEMENTING
11/16/2009 04:56		Test Lines				3333.0	
11/16/2009 04:58		Pump Spacer 1	4	10		175.0	RIG WATER WITH NO ADDITIVES
11/16/2009 05:02		Pump Spacer 2	5	24		244.0	RIG WATER WITH 80# MUDFLUSH III ADDED
11/16/2009 05:11		Pump Lead Cement	8	89		529.0	200 SACKS VERSACEM MIXED @ 12.0# WITH RIG WATER
11/16/2009 05:24		Pump Tail Cement	8	105		169.0	300 SACKS VERSACEM MIXED @ 13.0# WITH RIG WATER
11/16/2009 05:39		Shutdown					TO WASH PUMP AND LINES
11/16/2009 05:40		Clean Lines					
11/16/2009 05:42		Drop Top Plug					PRELOADED LATCHDOWN TOP PLUG
11/16/2009 05:44		Pump Displacement	8	117		143.0	RIG WATER WITH 2.5 GAL/MGAL ADDED
11/16/2009 06:02		Bump Plug	3			1249.0	CALCULATED PRESSURE TO LAND PLUG WAS 1140 PSI
11/16/2009 06:04		Check Floats				2353.0	FLOATS HELD
11/16/2009 06:06		End Job					

HALLIBURTON

Cementing Job Summary

The Road to Excellence Starts with Safety

Sold To #: 359915		Ship To #: 2754053		Quote #:		Sales Order #: 7009210	
Customer: SYNERGY RESOURCES CORPORATION				Customer Rep: Libhart, Don			
Well Name: SRC			Well #: 31-5D			API/UWI #: 05-123-30075-00	
Field: WATTENBERG		City (SAP): SEVERANCE		County/Parish: Weld		State: Colorado	
Legal Description: Section SWSE32 Township 6N Range 66W							
Lat: N 40.44 deg. OR N 40 deg. 26 min. 22.452 secs.				Long: W 104.8 deg. OR W -105 deg. 12 min. 0.036 secs.			
Contractor: ENSIGN			Rig/Platform Name/Num: ENSIGN122				
Job Purpose: Cement Production Casing							
Well Type: Development Well			Job Type: Cement Production Casing				
Sales Person: FLING, MATTHEW			Srcv Supervisor: CONGDON, RICHARD			MBU ID Emp #: 320306	

Job Personnel

HES Emp Name	Exp Hrs	Emp #	HES Emp Name	Exp Hrs	Emp #	HES Emp Name	Exp Hrs	Emp #
CONGDON, RICHARD S.		320306	LAVALLEY, LARRY P		419296	RAMOS, REFUGIO Castro		435413
VIGIL, NICHOLAS Joseph		443481						

Equipment

HES Unit #	Distance-1 way	HES Unit #	Distance-1 way	HES Unit #	Distance-1 way	HES Unit #	Distance-1 way
10248060C	40 mile	10857012C	40 mile	10866497C	40 mile	10948695	40 mile
11341988P	40 mile						

Job Hours

Date	On Location Hours	Operating Hours	Date	On Location Hours	Operating Hours	Date	On Location Hours	Operating Hours
TOTAL			Total is the sum of each column separately					

Job

Job Times

Formation Name						Date	Time	Time Zone	
Formation Depth (MD)		Top	Bottom			Called Out	15 - Nov - 2009	23:00	MST
Form Type		BHST			On Location	16 - Nov - 2009	02:30	MST	
Job depth MD		7537. ft		Job Depth TVD	7537. ft	Job Started	16 - Nov - 2009	04:55	MST
Water Depth		Wk Ht Above Floor		7. ft		Job Completed	16 - Nov - 2009	06:08	MST
Perforation Depth (MD)		From	To			Departed Loc	16 - Nov - 2009	07:00	MST

Well Data

Description	New / Used	Max pressure psig	Size in	ID in	Weight lbm/ft	Thread	Grade	Top MD ft	Bottom MD ft	Top TVD ft	Bottom TVD ft
Open Hole				7.875				638.	7546.	638.	7279.
Production Casing	New		4.5	4.	11.6				7537.		7270.
Surface Casing	Used		8.625	8.097	24.		J-55		638.		638.

Sales/Rental/3rd Party (HES)

Description	Qty	Qty uom	Depth	Supplier
SHOE,FLT,4-1/2 8RD,2-3/4 SSII	1	EA		
CLR,FLT,4-1/2 8RD,9.5-13.5PPF,2-3/4	1	EA		

HALLIBURTON

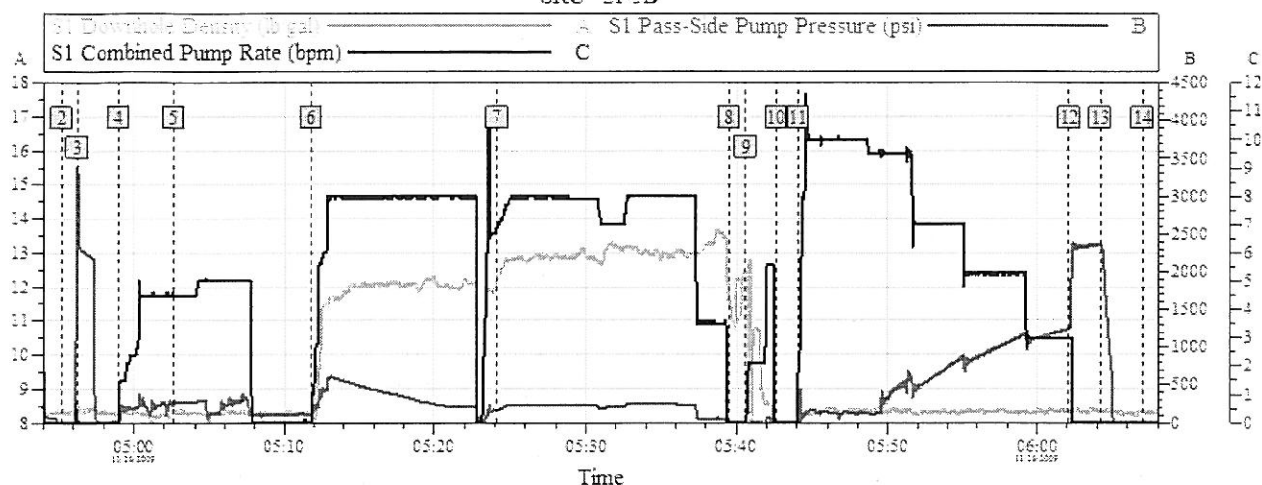
Cementing Job Summary

Description										Qty	Qty uom	Depth	Supplier		
CENTRALIZER ASSY - API - 4-1/2 CSG X										35	EA				
CLAMP - LIMIT - 4-1/2 - HINGED -										1	EA				
PLUG,CMTG,TOP,4 1/2,HWE,3.65 MIN/4.14 MA										1	EA				
KIT,HALL WELD-A										1	EA				
Tools and Accessories															
Type	Size	Qty	Make	Depth	Type	Size	Qty	Make	Depth	Type	Size	Qty	Make		
Guide Shoe					Packer					Top Plug					
Float Shoe					Bridge Plug					Bottom Plug					
Float Collar					Retainer					SSR plug set					
Insert Float										Plug Container					
Stage Tool										Centralizers					
Miscellaneous Materials															
Gelling Agt			Conc		Surfactant			Conc		Acid Type			Qty	Conc	%
Treatment Fld			Conc		Inhibitor			Conc		Sand Type			Size	Qty	
Fluid Data															
Stage/Plug #: 1															
Fluid #	Stage Type	Fluid Name			Qty	Qty uom	Mixing Density lbm/gal	Yield ft ³ /sk	Mix Fluid Gal/sk	Rate bbl/min	Total Mix Fluid Gal/sk				
1	Water Spacer				10.00	bbl	8.33	.0	42.0	8.0					
2	MUD FLUSH III	MUD FLUSH III - SBM (528788)			24.00	bbl	8.4	.0	42.0	8.0					
3	Versacem 12#	VERSACEM (TM) SYSTEM (452010)			200.0	sacks	12.	2.49	13.91	8.0	13.91				
4	Versacem 13#	VERSACEM (TM) SYSTEM (452010)			300.0	sacks	13.	1.96	9.93	8.0	9.93				
5	Clayfix III Displacement				117.00	bbl	8.34	.0	42.0	8.0					
2.5 gal/Mgal		CLAYFIX 3, TOTETANK (101583425)													
Calculated Values				Pressures				Volumes							
Displacement				Shut In: Instant				Lost Returns				Cement Slurry		Pad	
Top Of Cement				5 Min				Cement Returns				Actual Displacement		Treatment	
Frac Gradient				15 Min				Spacers				Load and Breakdown		Total Job	
Rates															
Circulating				Mixing				Displacement				Avg. Job			
Cement Left In Pipe		Amount		14 ft		Reason		Shoe Joint							
Frac Ring # 1 @		ID		Frac ring # 2 @		ID		Frac Ring # 3 @		ID		Frac Ring # 4 @		ID	
The Information Stated Herein Is Correct								Customer Representative Signature							

HALLIBURTON

SYNERGY RESOURCES

SRC 21-5D



Global Event Log

Intersection	SDD	SPPP	SCPR	Intersection	SDD	SPPP	SCPR
1 Starting Job	03:52:53	2320	60.00	2 Start Job	04:55:13	3261	-1.000
3 Test Lines	04:56:15	3334	0.100	4 Rig Water	04:58:59	3280	14.00
5 Modiflush III	05:02:35	3320	244.0	6 12ppg Versacem	05:11:48	3280	101.0
7 13ppg Versacem	05:24:08	3125	169.0	8 Shutdown	05:39:29	1159	-21.00
9 Clean Lines	05:40:36	1242	-23.00	10 Drop Top Plug	05:42:37	0120	-19.00
11 Claytex III Displacement	05:44:02	-0040	-21.00	12 Bump Plug	06:02:06	3270	1249
13 Check Floats	06:04:11	3330	2353	14 End Job	06:06:59	3320	-26.00
15 Ending Job	06:09:54	3290	-29.00				

Customer: SYNERGY
Well Description: 4.5" PRODUCTION

Job Date: 16-Nov-2009
LWI: 05-123-30075

Sales Order #: 7009210

HALLIBURTON
OptiCem v6.4.2
16-Nov-09 06:13