

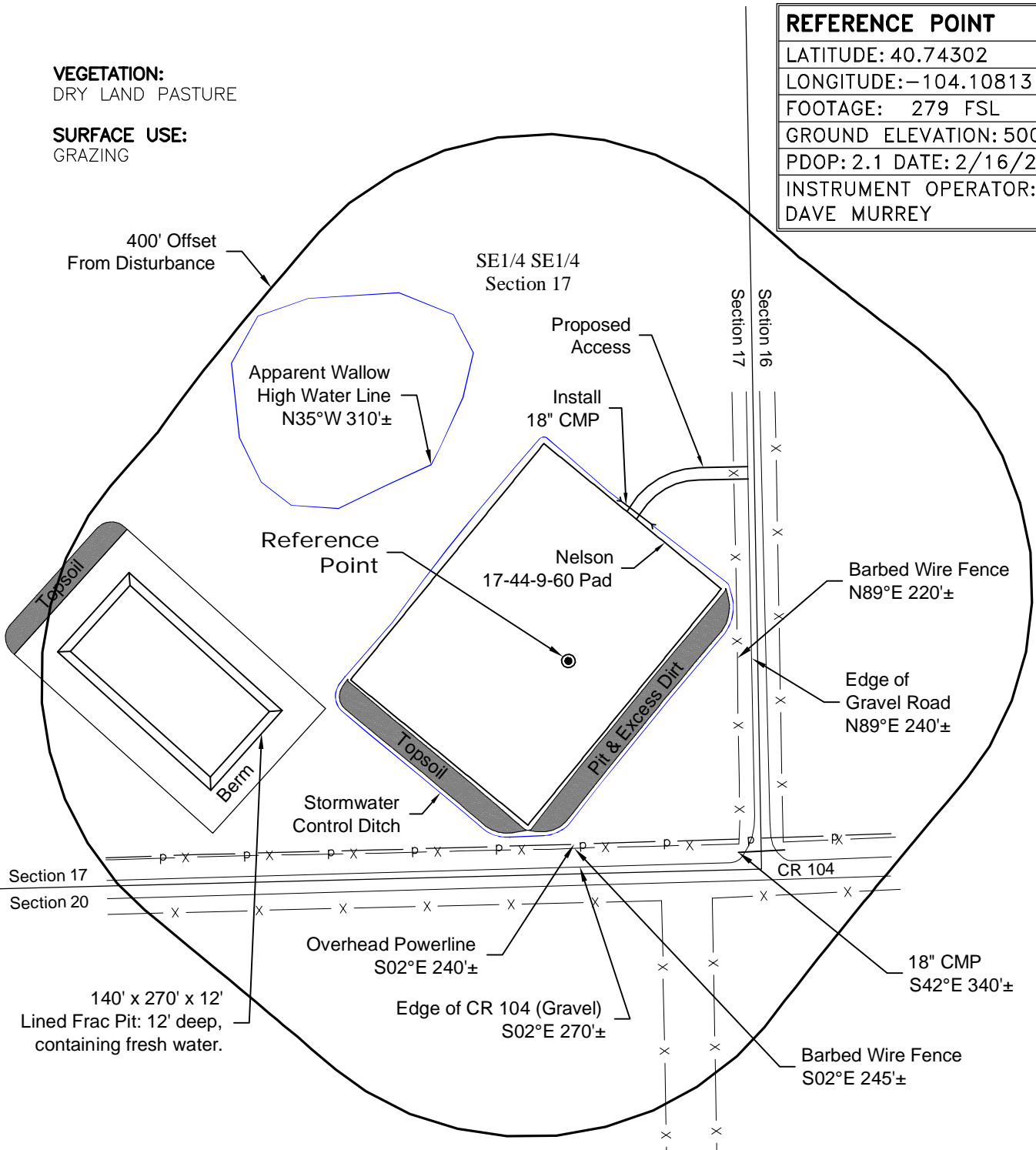
# LOCATION DRAWING

**VEGETATION:**  
DRY LAND PASTURE

**SURFACE USE:**  
GRAZING

## REFERENCE POINT

LATITUDE: 40.74302
LONGITUDE: -104.10813
FOOTAGE: 279 FSL 248 FEL
GROUND ELEVATION: 5008.2
PDOP: 2.1 DATE: 2/16/2011
INSTRUMENT OPERATOR: DAVE MURREY



**NOTE:**  
ALL PRODUCTION FACILITIES WILL BE ON PAD.

4/8/11



0 200 400  
Graphic Scale in Feet  
1 inch = 200 feet

DISTURBANCE ACREAGE:  
3.7± DRILLING OPERATIONS  
2.0± FRAC PIT  
1.0± INTERIM RECLAIM

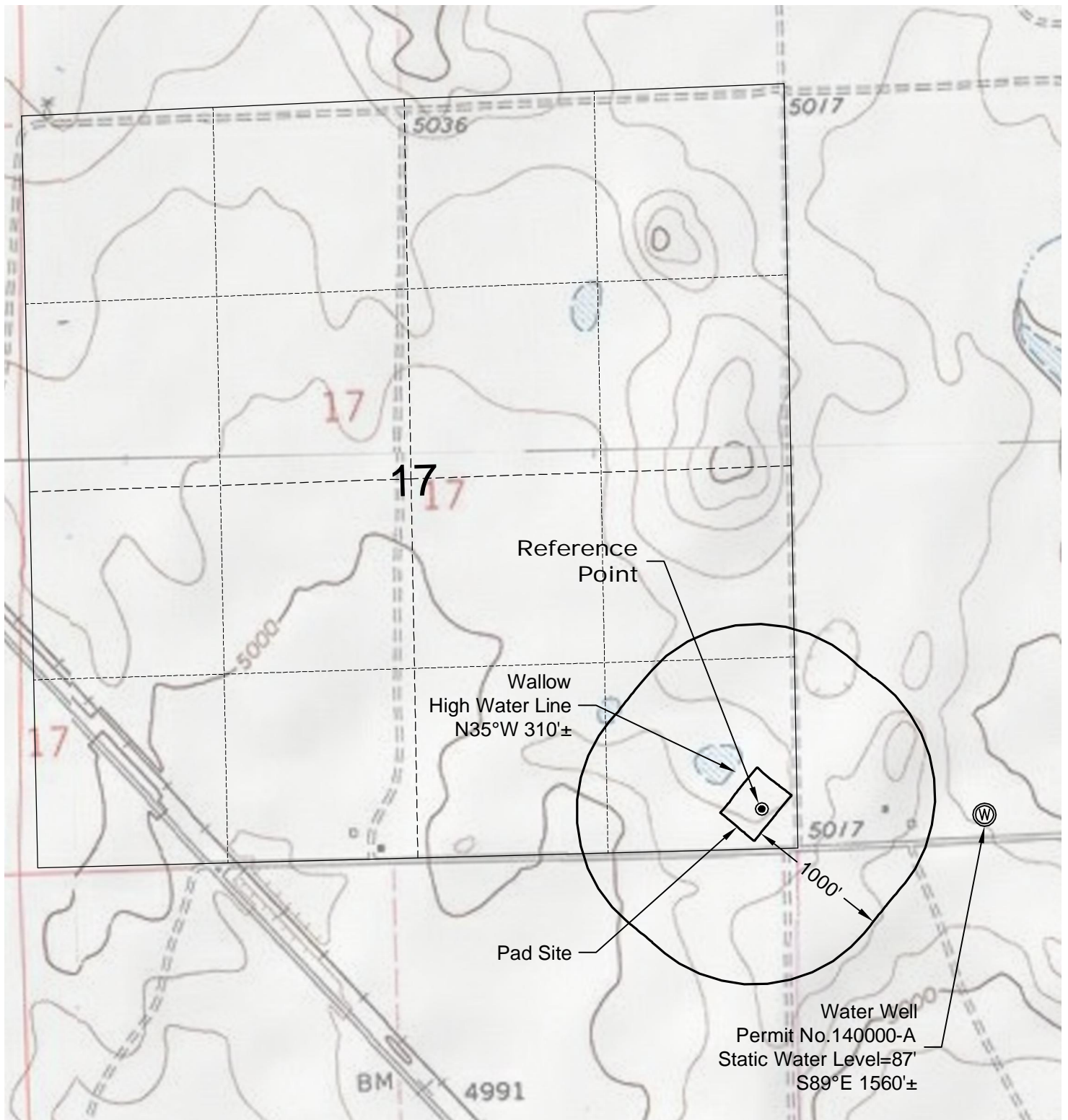
**GEO SURV**

LAND SURVEYING AND MAPPING  
LAFAYETTE - WINTER PARK  
Ph 303 666 0379 Fx 303 665 6320

**CARRIZO OIL & GAS, INC**  
**NELSON 17-44-9-60 PAD**

**SE1/4 SE1/4 SEC. 17 T9N R60W**  
**6th PM WELD COUNTY COLORADO**

# HYDROLOGY MAP



4/8/11



North  
1000

0 1000 2000

Graphic Scale in Feet  
1 inch = 1000 feet



LAND SURVEYING AND MAPPING  
LAFAYETTE - WINTER PARK  
Ph 303 666 0379 Fx 303 665 6320

**CARRIZO OIL & GAS, INC**  
**NELSON 17-44-9-60 PAD**

**SE1/4 SE1/4 SEC. 17 T9N R60W**  
**6th PM WELD COUNTY COLORADO**

# ACCESS ROAD MAP



## DRIVING DIRECTIONS:

From Town of Keota, beginning at intersection  
of WCR 390 & WCR 103; North on WCR 390  
MP 3.5 Right on WCR 104  
MP 4.3 Left on improved gravel road  
MP 4.4 Left on access onto Nelson 17-44-9-60 Pad

4/8/11



North



Graphic Scale in Feet  
1 inch = 2000 feet

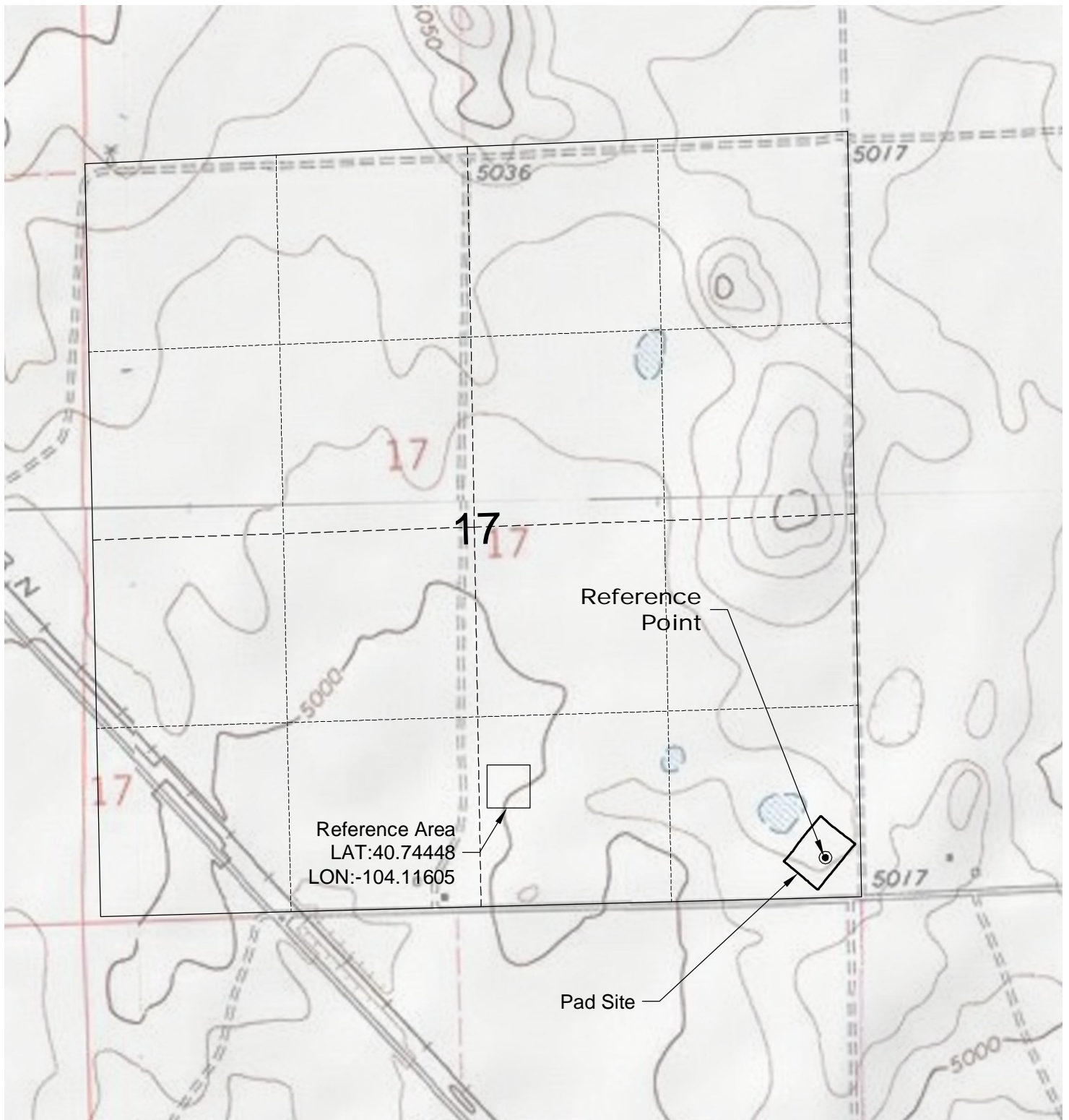


LAND SURVEYING AND MAPPING  
LAFAYETTE - WINTER PARK  
Ph 303 666 0379 Fx 303 665 6320

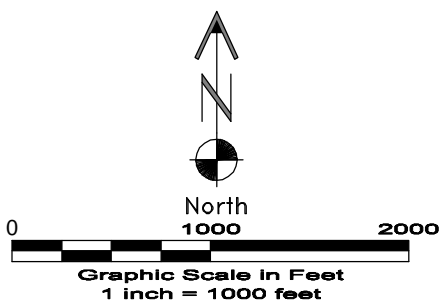
**CARRIZO OIL & GAS, INC**  
**NELSON 17-44-9-60 PAD**

**SE1/4 SE1/4 SEC. 17 T9N R60W**  
**6th PM WELD COUNTY COLORADO**

# REFERENCE AREA MAP



DWG: G:\GEO SURV\Weld\North\Carrizo 110004\Wellplate\Nelson 17-44-9-60\F2A R1.dwg USER: MTC DATE: Apr 08, 2011 3:04pm



 **GEO SURV**   
LAND SURVEYING AND MAPPING  
LAFAYETTE - WINTER PARK  
Ph 303 666 0379 Fx 303 665 6320

**CARRIZO OIL & GAS, INC**  
**NELSON 17-44-9-60 PAD**

**SE1/4 SE1/4 SEC. 17 T9N R60W**  
**6th PM WELD COUNTY COLORADO**

4/8/11

# CONSTRUCTION LAYOUT DRAWING

1 of 2

PAD 300'X400' ELEV=5007.4'

DISTURBED AREA=3.7± ACRES

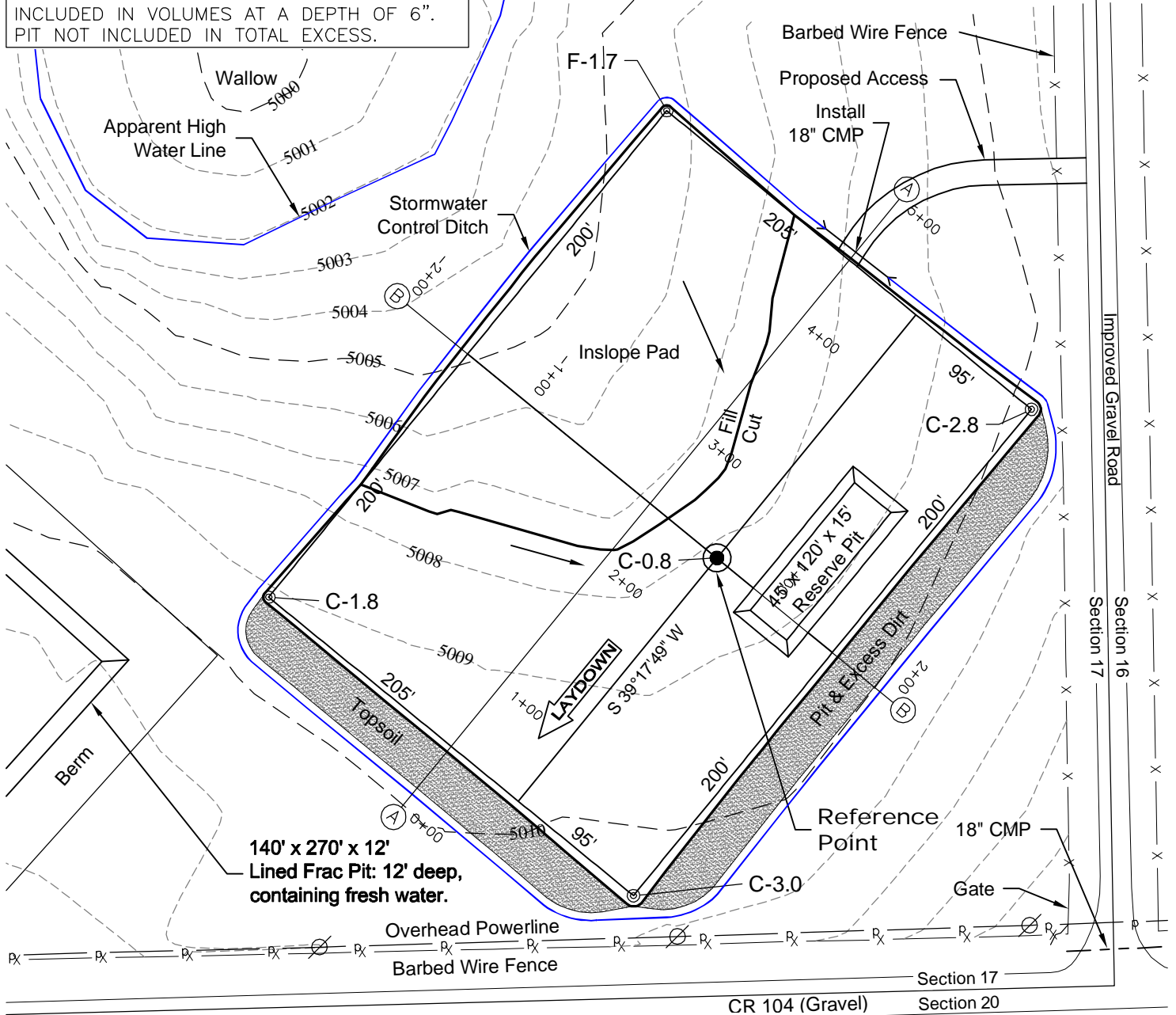
ESTIMATED DIRT QUANTITIES

CUTx10%	FILL	PIT	TOPSOIL	EXCESS
4,480	1,800	2,590	2,330	350

NOTE: VOLUMES IN CUBIC YARDS. TOPSOIL INCLUDED IN VOLUMES AT A DEPTH OF 6". PIT NOT INCLUDED IN TOTAL EXCESS.

VEGETATION:  
DRY LAND PASTURE

SURFACE USE:  
GRAZING



NOTE:  
10% ALLOWANCE IS MADE FOR SOIL EXPANSION.

4/8/11

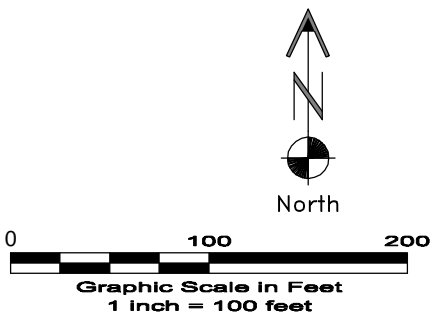
**GEO SURV**

LAND SURVEYING AND MAPPING  
LAFAYETTE - WINTER PARK  
Ph 303 666 0379 Fx 303 665 6320

**CARRIZO OIL & GAS, INC**  
**NELSON 17-44-9-60 PAD**

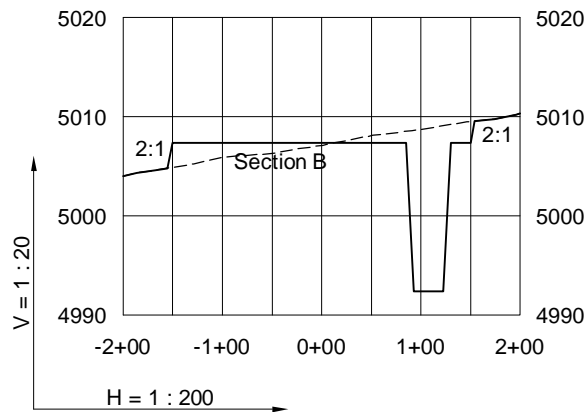
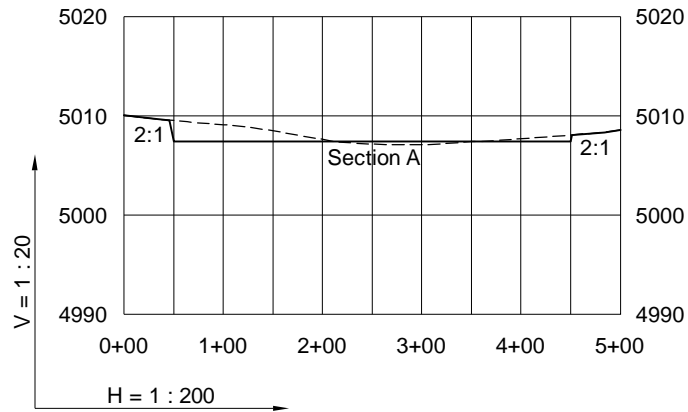
**SE1/4 SE1/4 SEC. 17 T9N R60W**  
**6th PM WELD COUNTY COLORADO**

DWG: G:\GEO SURV\Weld\North\Corrizo 110004\Wellplate\Nelson 17-44-9-60\F2A R1.dwg USER: MTC DATE: Apr 08, 2011 3:05pm



# CONSTRUCTION LAYOUT DRAWING

2 of 2



4/8/11

----- Existing Ground  
 \_\_\_\_\_ Proposed Grade




**GEO SURV**

LAND SURVEYING AND MAPPING  
 LAFAYETTE - WINTER PARK  
 Ph 303 666 0379 Fx 303 665 6320

**CARRIZO OIL & GAS, INC**  
 NELSON 17-44-9-60 PAD

**SE1/4 SE1/4 SEC. 17 T9N R60W**  
 6th PM WELD COUNTY COLORADO