

T6N, R92W, 6th P.M.

QUICKSILVER RESOURCES, INC.

Well location, WEBER #32-4, located as shown in the SW 1/4 NE 1/4 of Section 4, T6N, R92W, 6th P.M., Moffat County, Colorado.

BASIS OF ELEVATION

SPOT ELEVATION LOCATED AT THE NORTHEAST CORNER OF SECTION 10, T6N, R93W, 6th P.M. TAKEN FROM THE HORSE GULCH QUADRANGLE, COLORADO, MOFFAT COUNTY, 7.5 MINUTE QUAD (TOPOGRAPHIC MAP) PUBLISHED BY THE UNITED STATES DEPARTMENT OF THE INTERIOR, GEOLOGICAL SURVEY. SAID ELEVATION IS MARKED AS BEING 6246 FEET.

BASIS OF BEARINGS

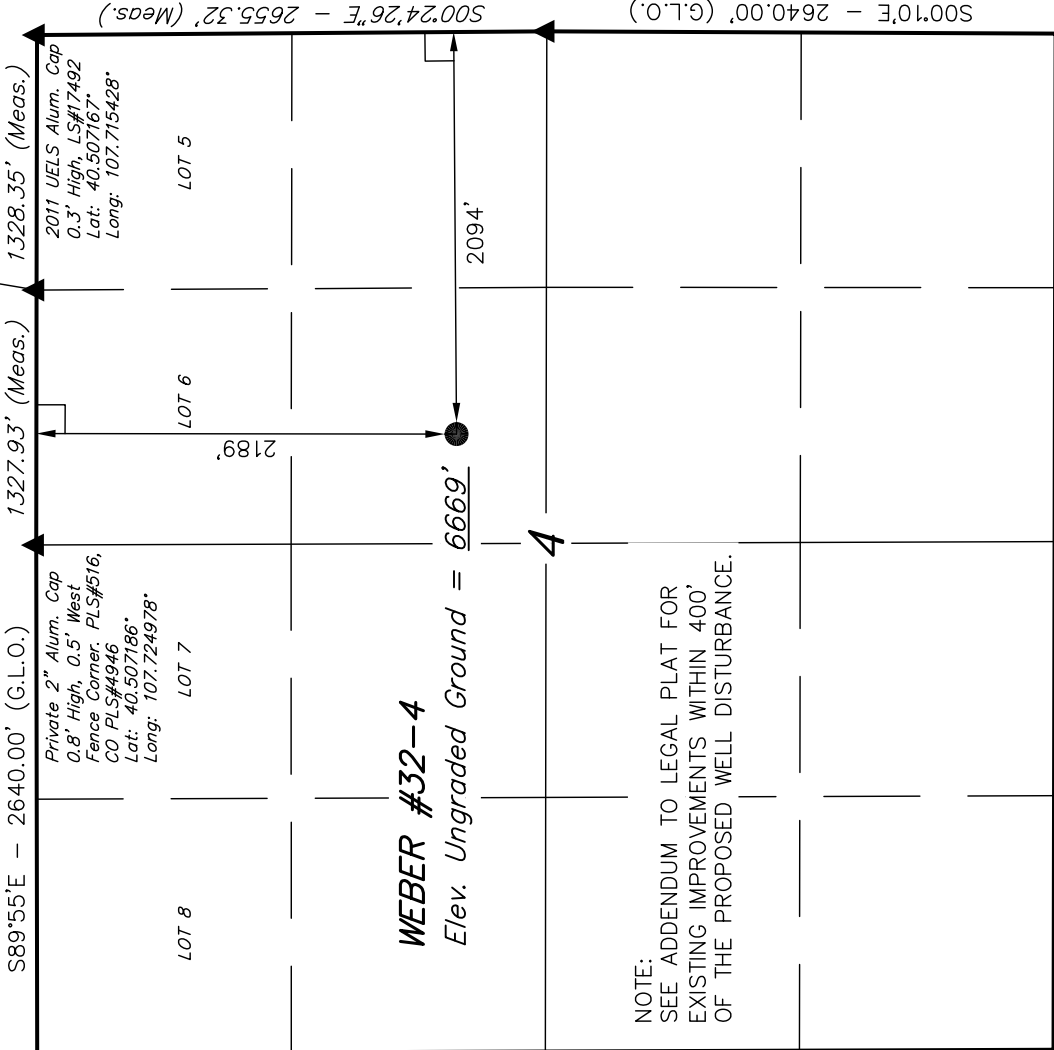
BASIS OF BEARINGS IS A G.P.S. OBSERVATION.

Private 2" Alum. Cap
0.5' High, North of SS,
PLS#516, CO PLS#4946
Lat: 40.507178°
Long: 107.720203°

Private 2" Alum. Cap
0.8' High, 0.5' West
Fence Corner, PLS#516,
CO PLS#4946
Lat: 40.507186°
Long: 107.724978°

2011 UELS Alum. Cap
0.3' High, LS#17492
Lat: 40.507167°
Long: 107.715428°

Set Marked Stone,
Small Mound of Stones
0.5' North, Steel T-Post
4.0' Northeast
Lat: 40.499881°
Long: 107.715369°



N00°12'W - 5292.54' (G.L.O.)

NOTE:
SEE ADDENDUM TO LEGAL PLAT FOR
EXISTING IMPROVEMENTS WITHIN 400'
OF THE PROPOSED WELL DISTURBANCE.

LEGEND:

— = 90° SYMBOL

● = PROPOSED WELL HEAD.

▲ = SECTION CORNERS LOCATED.

(NAD 83)
LATITUDE = 40°30'04.23" (40.501175)
LONGITUDE = 107°43'22.47" (107.722908)
(NAD 27)
LATITUDE = 40°30'04.34" (40.501206)
LONGITUDE = 107°43'20.22" (107.722283)

CERTIFICATE

THIS IS TO CERTIFY THAT THE ABOVE PLAT WAS PREPARED FROM FIELD NOTES OF ACTUAL SURVEYS MADE BY ME OR UNDER MY SUPERVISION AND THAT THE SAME ARE TRUE AND CORRECT TO THE BEST OF MY KNOWLEDGE AND BELIEF.

REGISTERED LAND SURVEYOR
REGISTRATION NO. 17492
STATE OF COLORADO

UINTAH ENGINEERING & LAND SURVEYING
85 SOUTH 200 EAST - VERNAL, UTAH 84078
(435) 789-1017

SCALE 1" = 1000'	DATE SURVEYED: 04-04-11	DATE DRAWN: 04-11-11
PARTY G.S. G.B. M.D.	REFERENCES G.L.O. PLAT	
WEATHER COOL	FILE	
PDOP = 2.8		QUICKSILVER RESOURCES, INC.

QUICKSILVER RESOURCES, INC.

ADDENDUM TO LEGAL PLAT FOR

WEBER #32-4

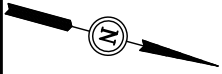
SECTION 4, T6N, R92W, 6th P.M.

2189' FNL 2094' FEL

SCALE: 1" = 200'

DATE: 04-11-11

DRAWN BY: M.D.



400' Offset
from Edge of
Disturbance

