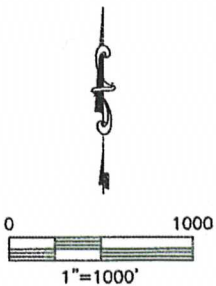
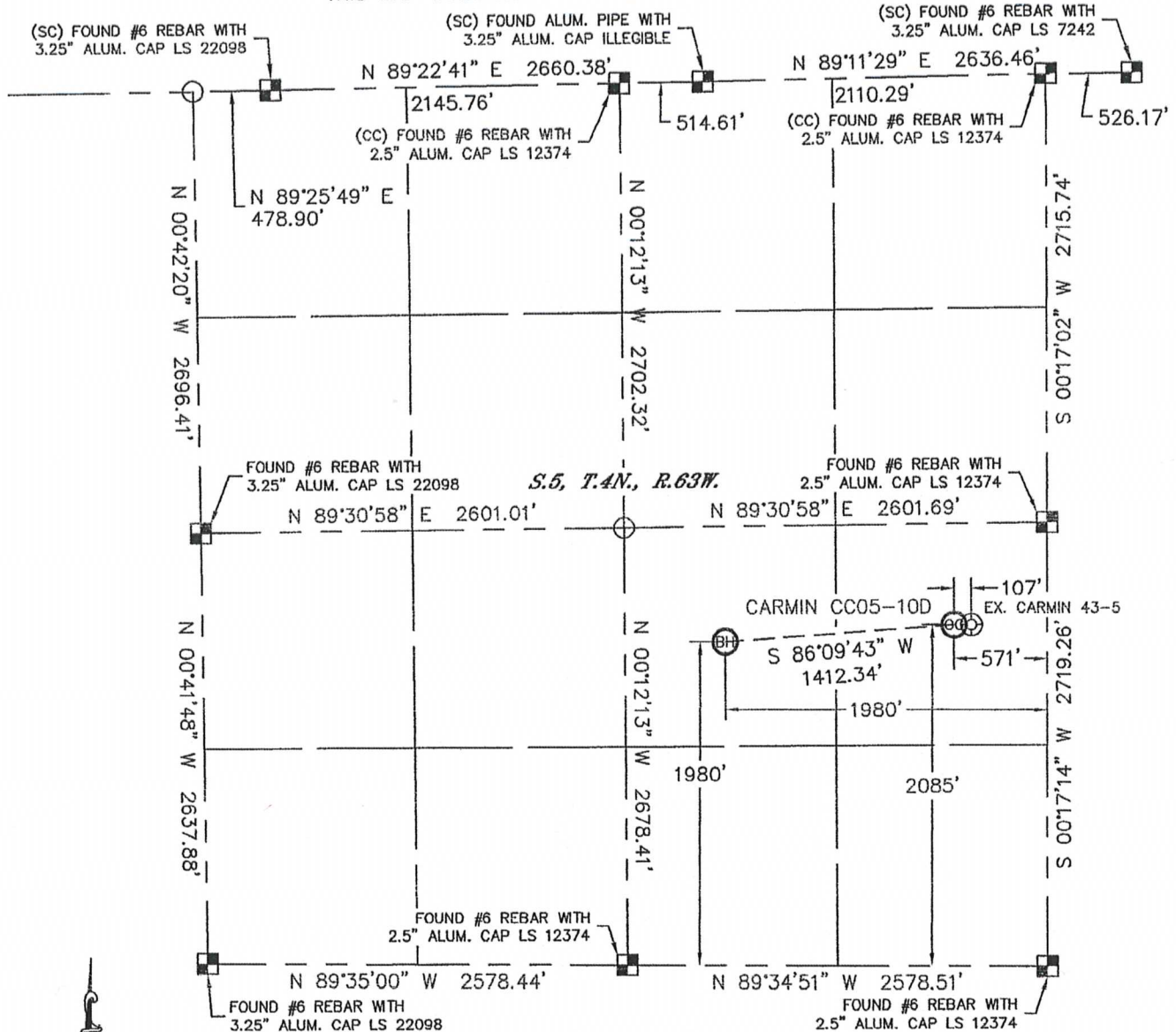


WELL LOCATION CERTIFICATE

THIS MAP DOES NOT REPRESENT A BOUNDARY SURVEY

SECTION: 5
TOWNSHIP: 4N
RANGE: 63W



In accordance with a request from Nate McCorkell with Noble Energy Inc. Lat40°, Inc. has determined the surface location of the CARMIN CC05-10D to be 2085' from the SOUTH line and 571' from the EAST line and the bottom hole to be 1980' from the SOUTH line and 1980' from the EAST line as measured at right angles from the section lines of Section 5, Township 4 North, Range 63 West of the Sixth Principal Meridian, County of Weld, State of Colorado.

I hereby state that this Well Location Certificate was prepared by me, or under my direct supervision, that the fieldwork was completed on 3/5/11, for and on behalf of Noble Energy Inc. That this is not a Land Survey Plat or an Improvement Survey Plat, and that it is not to be relied upon for establishment of fence, building, or other future improvement lines.

NOTE:

- 1) Bearings shown are Grid Bearings of the Colorado State Plane Coordinate System, North Zone, North American Datum 1983/2007. The lineal dimensions as contained herein are based upon the "U.S. Survey Foot."
- 2) Ground elevations are based on an observed GPS elevation (NAVD 1988 DATUM).
- 3) NEAREST EXISTING WELL: CARMIN 43-5, 107'
- 4) IMPROVEMENTS: See LOCATION DRAWING for all visible improvements within 400' of disturbed area.
- 5) SURFACE USE: RANGELAND, EX. WELL PAD
- 6) INSTRUMENT OPERATOR: AARON LUND

SURFACE LOCATION
LATITUDE: 40.33952°N
LONGITUDE: 104.45452°W
PDOP: 1.3
ELEV: 4653'
1/4, 1/4: NE1/4SE1/4
NEAREST PROPERTY LINE: 571' EAST

BOTTOM HOLE
LATITUDE: 40.33931°N
LONGITUDE: 104.45958°W

NOTE

According to Colorado law, you must commence any legal action based upon any defect in this W.L.C. within three years after you discover such defect. In no event, may any action based upon any defect in this survey be commenced more than ten years after the date of the certificate shown hereon. (13-80-105 C.R.S.)

LEGEND

- = ALIQUOT MONUMENT AS DESCRIBED
- = CALCULATED POSITION

Brian T. Brinkman—On behalf of Lat40°, Inc.
Colorado Licensed Professional
Land Surveyor No. 38175

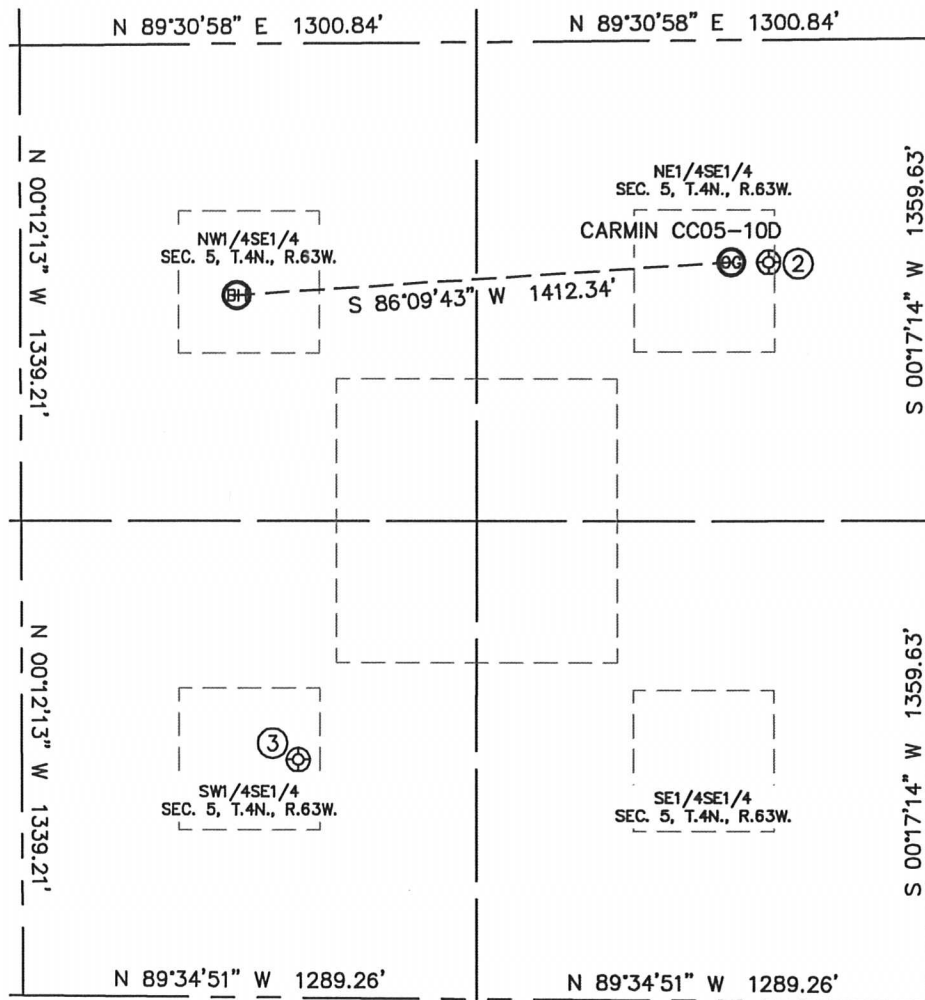
PROJECT#: 2011054



SITE SKETCH

CARMIN CC05-10D

SECTION: 5
TOWNSHIP: 4N
RANGE: 63W



②

CARMIN 43-5
NE1/4SE1/4
2086' FSL
464' FEL
LAT-40.33952°N
LONG-104.45413°W
PDOP: 2.3
ELEV: 4655'

③

CARMIN 34-5
SW1/4SE1/4
672' FSL
1799' FEL
LAT-40.33571°N
LONG-104.45900°W
PDOP: 1.5
ELEV: 4676'

