

Continental Resources, Inc.

Weld County, CO
Sec. 14-T8N-R62W
Planck 1-14H

Plan A Rev 0

Plan: Plan A Rev 0 Proposal

Sperry Drilling Services Proposal Report

23 March, 2011

Well Coordinates: 1,488,580.52 N, 3,338,563.01 E (40° 40' 05.35" N, 104° 16' 46.25" W)
Ground Level: 5,055.00 ft

Local Coordinate Origin:

Viewing Datum:

TVDs to System:

North Reference:

Unit System:

Geodetic Scale Factor Applied

Version: 2003.16 Build: 431

Centered on Well Planck 1-14H

RKB 16' @ 5071.00ft (Original Well Elev)

N

True

API - US Survey Feet - Custom

HALLIBURTON

Plan Report for Planck 1-14H - Plan A Rev 0 Proposal

Measured Depth (ft)	Inclination (°)	Azimuth (°)	Vertical Depth (ft)	+N/-S (ft)	+E/-W (ft)	Vertical Section (ft)	Dogleg Rate (°/100ft)	Build Rate (°/100ft)	Turn Rate (°/100ft)	Toolface Azimuth (°)
0.00	0.00	0.000	0.00	0.00	0.00	0.00	0.00	0.00	0.00	0.00
691.00	0.00	0.000	691.00	0.00	0.00	0.00	0.00	0.00	0.00	0.00
Pierre										
3,729.00	0.00	0.000	3,729.00	0.00	0.00	0.00	0.00	0.00	0.00	0.00
Laramie										
6,277.54	0.00	0.000	6,277.54	0.00	0.00	0.00	0.00	0.00	0.00	0.00
Kickoff at 6277.54ft										
6,549.46	32.63	179.914	6,535.00	-75.36	0.11	75.36	12.00	12.00	0.00	179.91
Sharon Springs										
6,650.00	44.70	179.914	6,613.36	-138.06	0.21	138.06	12.00	12.00	0.00	0.00
Build Rate = 12.00°/100ft										
6,681.50	48.48	179.914	6,635.00	-160.93	0.24	160.93	12.00	12.00	0.00	0.00
Niobrara										
6,800.43	62.75	179.914	6,702.00	-258.82	0.39	258.82	12.00	12.00	0.00	0.00
Niobrara "B"										
6,888.85	73.36	179.914	6,735.00	-340.71	0.51	340.71	12.00	12.00	0.00	0.00
Lower "B"										
7,025.46	89.75	179.914	6,755.00	-475.39	0.71	475.39	12.00	12.00	0.00	0.00
End Build at 7025.46ft - Target - 7" Casing Pt.										
11,500.00	89.75	179.914	6,774.48	-4,949.88	7.39	4,949.89	0.00	0.00	0.00	0.00
Hold Angle at 89.75										
16,213.58	89.75	179.914	6,795.00	-9,663.41	14.43	9,663.42	0.00	0.00	0.00	0.00
Planck 1-14H Plan A Rev 0 BH Tgt										

Plan Annotations

Measured Depth (ft)	Vertical Depth (ft)	Local Coordinates		Comment
		+N/-S (ft)	+E/-W (ft)	
6,277.54	6,277.54	0.00	0.00	Kickoff at 6277.54ft
6,650.00	6,613.36	-138.06	0.21	Build Rate = 12.00°/100ft
7,025.46	6,755.00	-475.39	0.71	End Build at 7025.46ft
11,500.00	6,774.48	-4,949.88	7.39	Hold Angle at 89.75
16,213.58	6,795.00	-9,663.41	14.43	Total Depth = 16213.58ft

Vertical Section Information

Angle Type	Target	Azimuth (°)	Origin Type	Origin		Start TVD (ft)
				+N/-S (ft)	+E/-W (ft)	
Target	Planck 1-14H Plan A Rev 0 BH Tgt	179.914	Slot	0.00	0.00	0.00

Survey tool program

From (ft)	To (ft)	Survey/Plan	Survey Tool
0.00	16,213.58	Plan A Rev 0 Proposal	MWD

HALLIBURTON**Plan Report for Planck 1-14H - Plan A Rev 0 Proposal****Casing Details**

Measured Depth (ft)	Vertical Depth (ft)	Name	Casing Diameter (")	Hole Diameter (")
7,025.46	6,755.00	7" Casing Pt.	7	8-3/4

Formation Details

Measured Depth (ft)	Vertical Depth (ft)	Name	Lithology	Dip (°)	Dip Direction (°)
691.00	691.00	Pierre		0.00	
3,729.00	3,729.00	Laramie		0.00	
6,549.46	6,535.00	Sharon Springs		0.00	
6,681.50	6,635.00	Niobrara		0.00	
6,800.43	6,702.00	Niobrara "B"		0.00	
6,888.85	6,735.00	Lower "B"		0.00	
7,025.46	6,755.00	Target		0.00	

Targets associated with this wellbore

Target Name	TVD (ft)	+N/-S (ft)	+E/-W (ft)	Shape
Planck 1-14H Plan A Rev 0 BH Tgt	6,795.00	-9,663.41	14.43	Point
Planck 1-14H 600' Setbacks	0.00	0.00	0.00	Polygon
Planck 1-14H Section Lines	0.00	0.00	0.00	Polygon
Planck 1-14H Center Section Line	0.00	0.00	0.00	Polygon

HALLIBURTON**North Reference Sheet for Sec. 14-T8N-R62W - Planck 1-14H - Plan A Rev 0**

All data is in US Feet unless otherwise stated. Directions and Coordinates are relative to True North Reference.

Vertical Depths are relative to RKB 16' @ 5071.00ft (Original Well Elev). Northing and Easting are relative to Planck 1-14H

Coordinate System is US State Plane 1983, Colorado Northern Zone using datum North American Datum 1983, ellipsoid GRS 1980

Projection method is Lambert Conformal Conic (2 parallel)

Central Meridian is -105.50°, Longitude Origin:0.000000°, Latitude Origin:40.783333°

False Easting: 3,000,000.00ft, False Northing: 1,000,000.00ft, Scale Reduction: 0.99998334

Grid Coordinates of Well: 1,488,580.52 ft N, 3,338,563.01 ft E

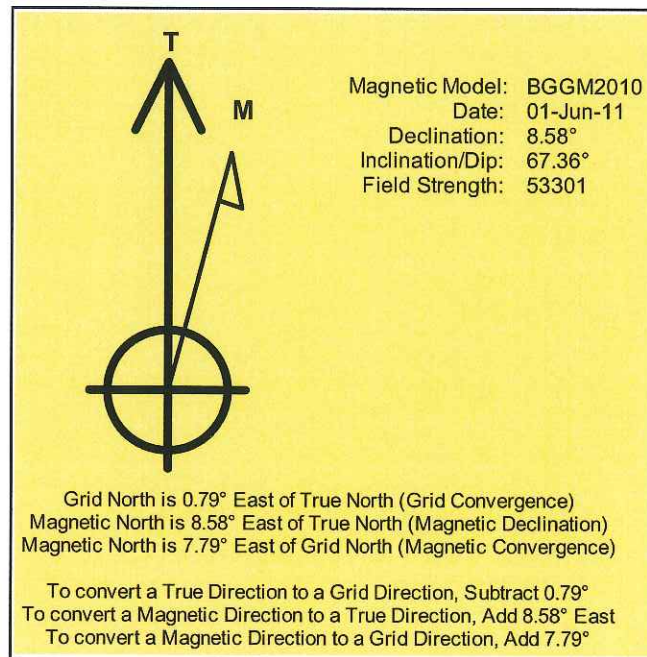
Geographical Coordinates of Well: 40° 40' 05.35" N, 104° 16' 46.25" W

Grid Convergence at Surface is: 0.79°

Based upon Minimum Curvature type calculations, at a Measured Depth of 16,213.58ft

the Bottom Hole Displacement is 9,663.42ft in the Direction of 179.91° (True).

Magnetic Convergence at surface is: -7.79° (1 June 2011, , BGGM2010)



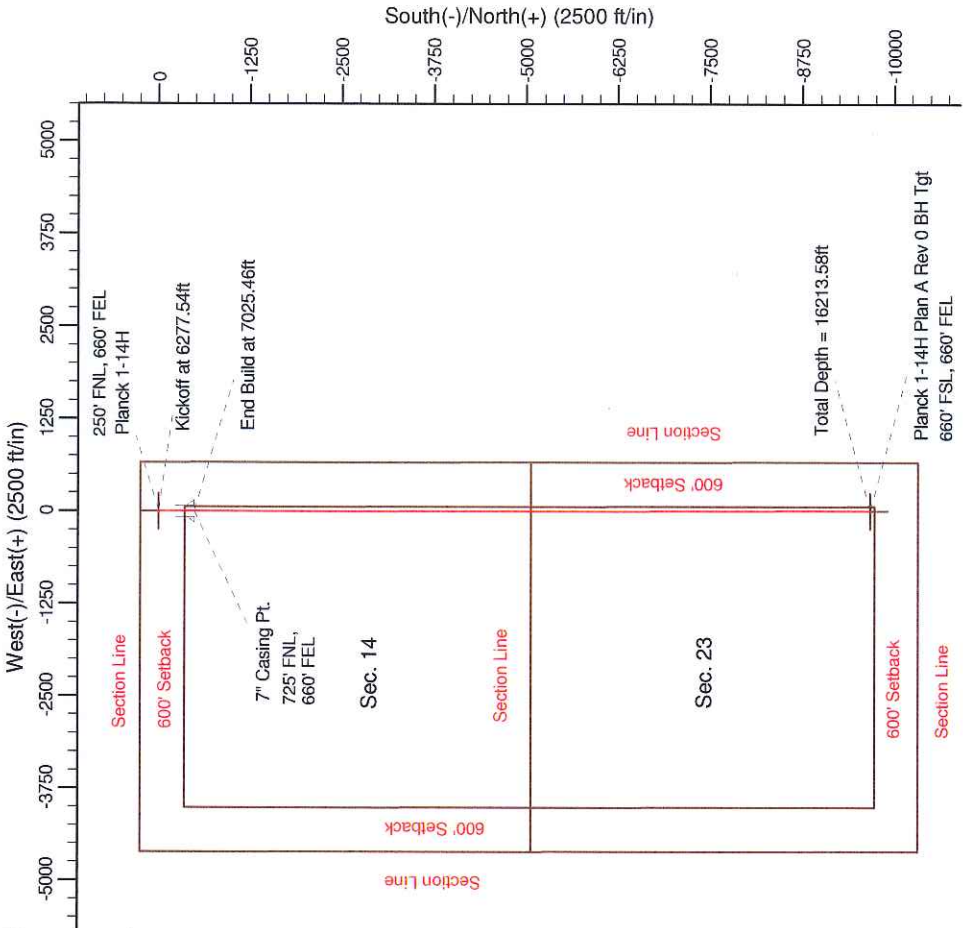
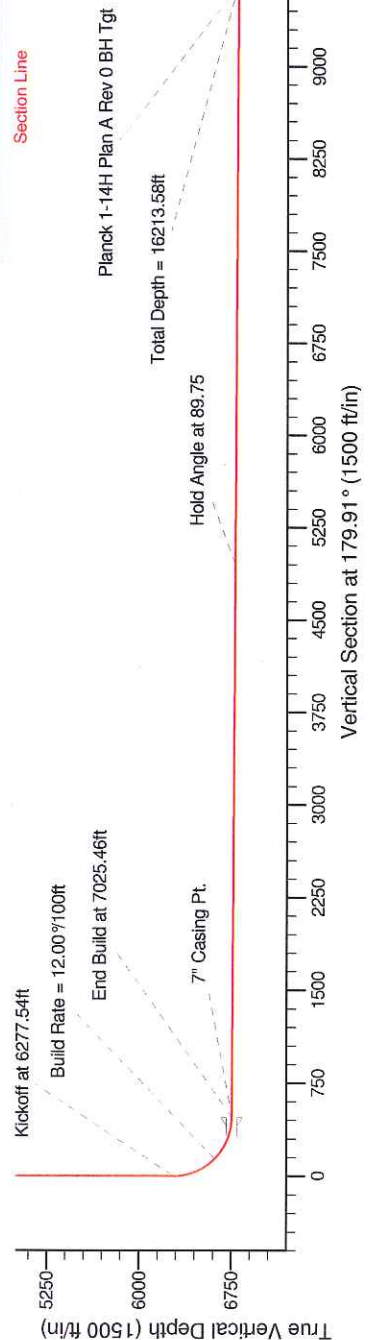
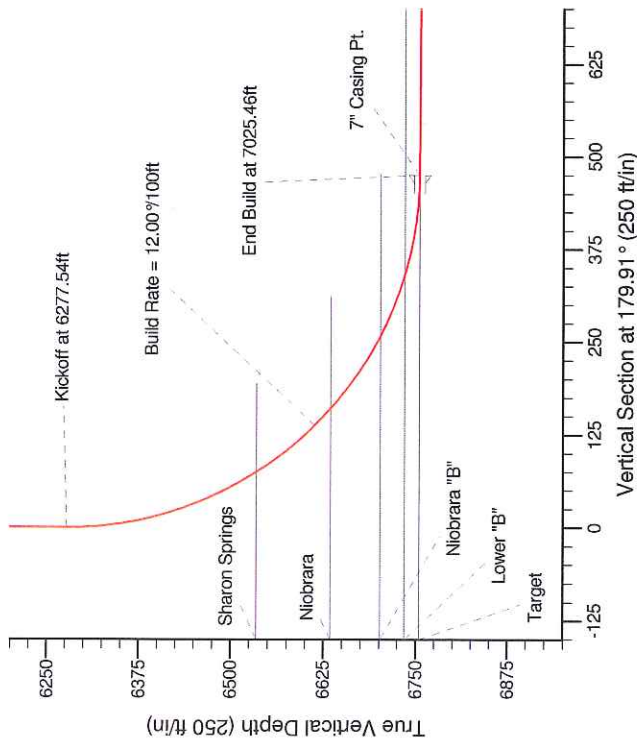
Project: Weld County, CO
 Site: Sec. 14-T8N-R62W
 Well: Planck 1-14H
 Wellbore: Plan A Rev 0
 Design: Plan A Rev 0 Proposal

Continental Resources, Inc.

HALLIBURTON
 Sperry Drilling

SECTION DETAILS

Sec	MD	Inc	Azi	TVD	+N/-S	+E/-W	Dleg	TFace	VSec	Target
1	0.00	0.00	0.000	0.00	0.00	0.00	0.00	0.00	0.00	
2	6277.54	0.00	0.000	6277.54	0.00	0.00	0.00	0.00	0.00	
3	7025.46	89.75	179.914	6755.00	-475.39	0.71	12.00	179.91	475.39	Planck 1-14H Plan A Rev 0 BH Tgt
4	16213.58	89.75	179.914	6795.00	-9663.41	14.43	0.00	0.00	9663.42	Planck 1-14H Plan A Rev 0 BH Tgt



WELL DETAILS: Planck 1-14H			
Ground Level:	5055.00	Latitude	Longitude
North	1488580.52	3338563.01	-104.279513
East	40.668152		
Plan: Plan A Rev 0 Proposal (Planck 1-14H/Plan A Rev 0)			
Created By: Paul A. Bitzan	Date: 03/23/2011	Checked:	Date:
Reviewed:	Date:	Approved:	Date: