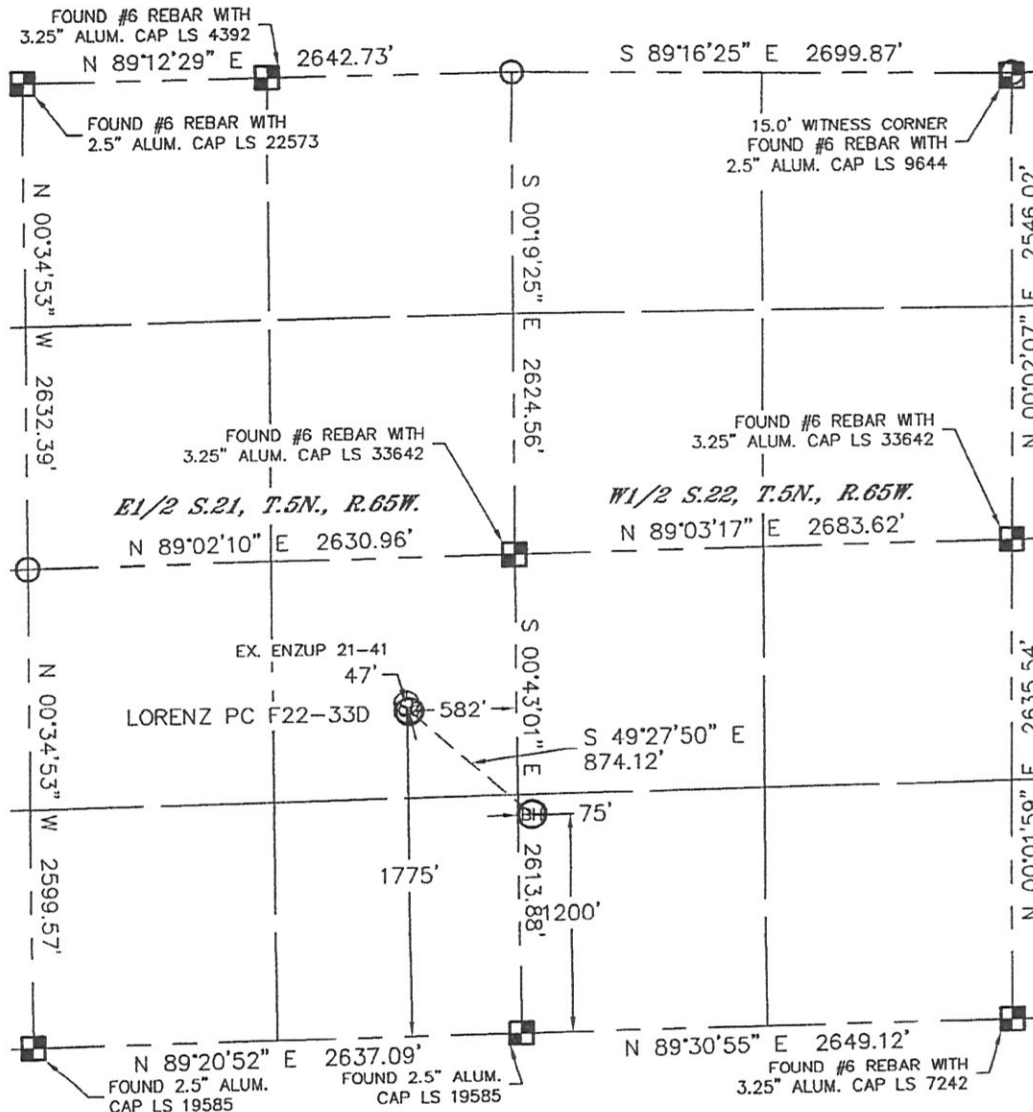


WELL LOCATION CERTIFICATE

THIS MAP DOES NOT REPRESENT A BOUNDARY SURVEY

SECTION: 21
TOWNSHIP: 5N
RANGE: 65W



In accordance with a request from Sean Casper with Noble Energy Inc. Lat40°, LLC has determined the surface location of the LORENZ PC F22-33D to be 1775' from the SOUTH line and 582' from the EAST line as measured at right angles from the section lines of Section 21, Township 5 North, Range 65 West and the bottom hole to be 1200' from the SOUTH line and 75' from the WEST line as measured at right angles from the section lines of Section 22, Township 5 North, Range 65 West of the Sixth Principal Meridian, County of Weld, State of Colorado.

I hereby state that this Well Location Certificate was prepared by me, or under my direct supervision, that the fieldwork was completed on 12/20/10, for and on behalf of Noble Energy Inc. That this is not a Land Survey Plat or an Improvement Survey Plat, and that it is not to be relied upon for establishment of fence, building, or other future improvement lines.

SURFACE LOCATION
LATITUDE: 40.38240°N
LONGITUDE: 104.66097°W
PDOP: 1.2
ELEV: 4635
1/4, 1/4: NE1/4SE1/4
NEAREST PROPERTY LINE: 582' EAST

BOTTOM HOLE
LATITUDE: 40.38082°N
LONGITUDE: 104.65861°W

NOTE:

- 1) Bearings shown are Grid Bearings of the Colorado State Plane Coordinate System, North Zone, North American Datum 1983/2007. The lineal dimensions as contained herein are based upon the "U.S. Survey Foot."
- 2) Ground elevations are based on an observed GPS elevation (NAVD 1988 DATUM).
- 3) NEAREST EXISTING WELL: ENZUP 21-41 47'
- 4) IMPROVEMENTS: See LOCATION DRAWING for all visible improvements within 400' of disturbed area.
- 5) SURFACE USE: PASTURE
- 6) INSTRUMENT OPERATOR: BRIAN BRINKMAN

NOTE

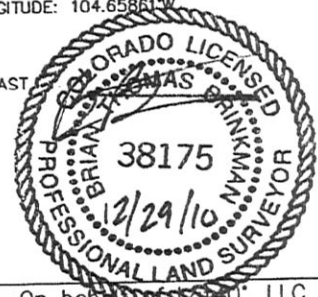
According to Colorado law, you must commence any legal action based upon any defect in this W.L.C. within three years after you discover such defect. In no event, may any action based upon any defect in this survey be commenced more than ten years after the date of the certificate shown hereon. (13-80-105 C.R.S.)

LEGEND

- = ALIQUOT MONUMENT AS DESCRIBED
- = CALCULATED POSITION

Brian T. Brinkman—On behalf of Lat40°, LLC
Colorado Licensed Professional
Land Surveyor No. 38175

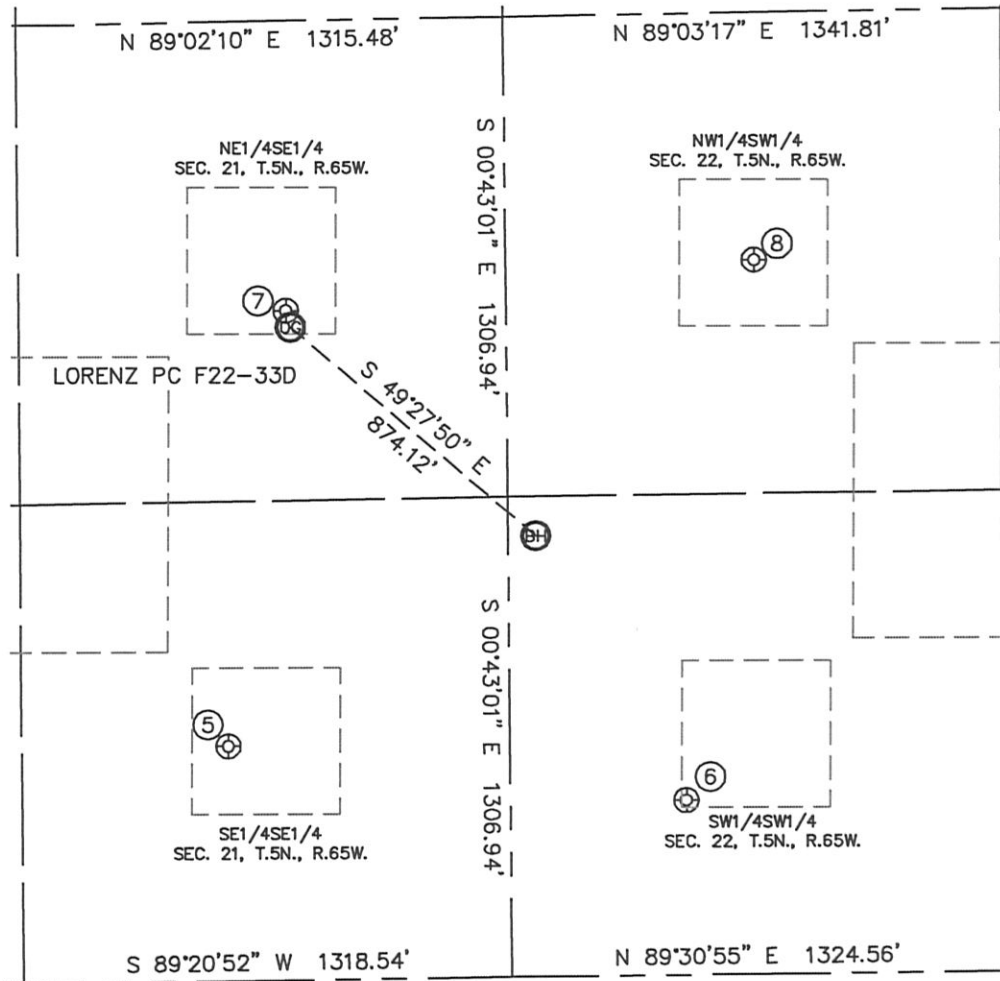
PROJECT#: 2010180



SITE SKETCH

LORENZ PC F22-33D

SECTION: 21
TOWNSHIP: 5N
RANGE: 65W



⑤

HAZEL 1-21
SE1/4SE1/4
640' FSL
760' FEL
LAT-40.37928°N
LONG-104.66160°W
PDOP: 2.2
ELEV: 4638

⑥

JOANN F22-13
SW1/4SW1/4
476' FSL
475' FWL
LAT-40.37884°N
LONG-104.65717°W
PDOP: 1.2
ELEV: 4640

⑦

ENZUP 21-41
NE1/4SE1/4
1821' FSL
595' FEL
LAT-40.38253°N
LONG-104.66102°W
PDOP: 1.5
ELEV: 4635

⑧

TRACY 1
NW1/4SW1/4
1945' FSL
670' FWL
LAT-40.38287°N
LONG-104.65648°W
PDOP: 1.5
ELEV: 4633

