

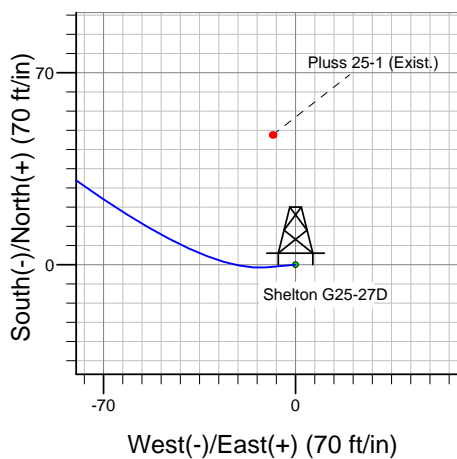
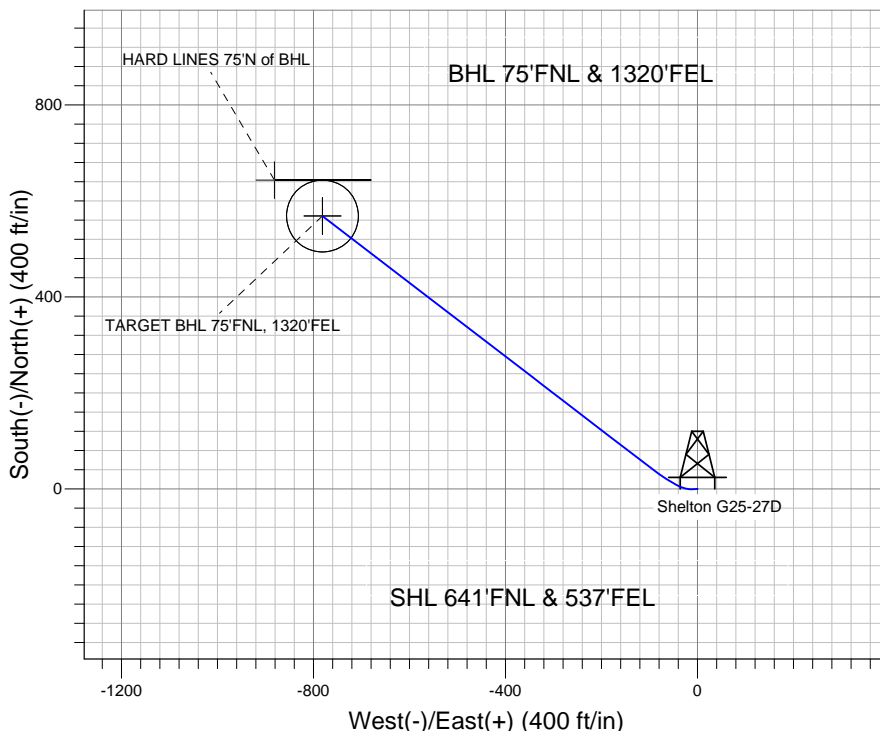
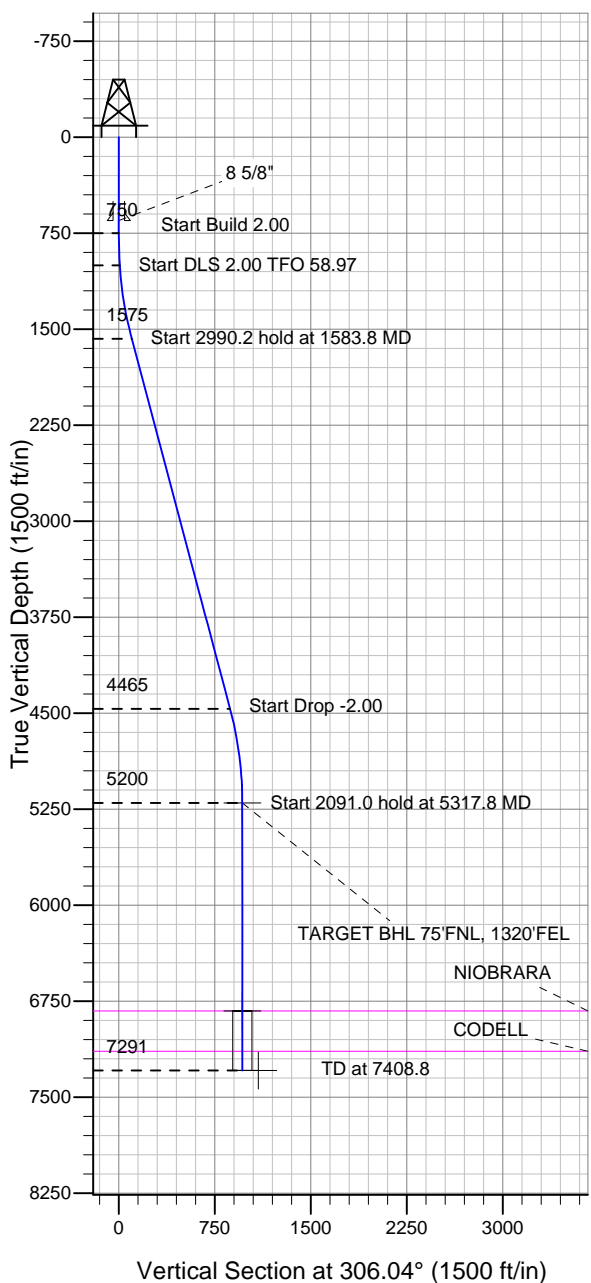
ENSIGN

Directional

Well Name: Shelton G25-27D

Surface Location: Shelton G25-27D Pad Sec.25-T4N-R65W
 North American Datum 1983 US State Plane 1983 Colorado Northern Zone
 Ground Elevation: 4828.0
 +N/-S +E/-W Northing Easting Latitude Longitude Slot
 0.0 0.0 1349273.26 3249900.54 40° 17' 19.284 N 104° 36' 15.048 W
 Original Well Elev WELL @ 4841.0ft (Original Well Elev)

NOBLE ENERGY INC WELD COUNTY CO



Shelton G25-27D Pad Sec.25-T4N-R65W
 Shelton G25-27D
 Noble Shelton G25-27D Plan #1 (1-24-11)
 16:24, January 26 2011



Azimuths to True North
 Magnetic North: 8.82°

Magnetic Field
 Strength: 53130.9nT
 Dip Angle: 67.00°
 Date: 1/26/2011
 Model: IGRF2010

WELLBORE TARGET DETAILS (LAT/LONG)

Name	TVD	+N/-S	+E/-W	Latitude	Longitude	Shape
TARGET BHL 75'FNL, 1320'FEL	5200.0	568.3	-781.1	40° 17' 24.900 N	104° 36' 25.128 W	Point
TARGET CIRCLE 75'FNL & 1320'FEL	6826.0	568.3	-781.1	40° 17' 24.900 N	104° 36' 25.128 W	Circle (Radius: 75.0)
HARD LINES 75'N of BHL	7291.0	643.3	-881.1	40° 17' 25.641 N	104° 36' 26.418 W	Polygon

SECTION DETAILS

Sec	MD	Inc	Azi	TVD	+N/-S	+E/-W	DLeg	TFace	VSec	Target
1	0.0	0.00	0.00	0.0	0.0	0.0	0.00	0.00	0.0	
2	750.0	0.00	0.00	750.0	0.0	0.0	0.00	0.00	0.0	
3	1000.0	5.00	265.00	999.7	-1.0	-10.9	2.00	265.00	8.2	
4	1583.8	14.88	307.50	1574.6	42.6	-96.0	2.00	58.97	102.7	
5	4574.0	14.88	307.50	4464.6	509.9	-705.0	0.00	0.00	870.0	
6	5317.8	0.00	0.00	5200.0	568.3	-781.1	2.00	180.00	966.0	TARGET BHL 75'FNL, 1320'FEL
7	7408.8	0.00	0.00	7291.0	568.3	-781.1	0.00	0.00	966.0	