

Steil Surveying Services, LLC

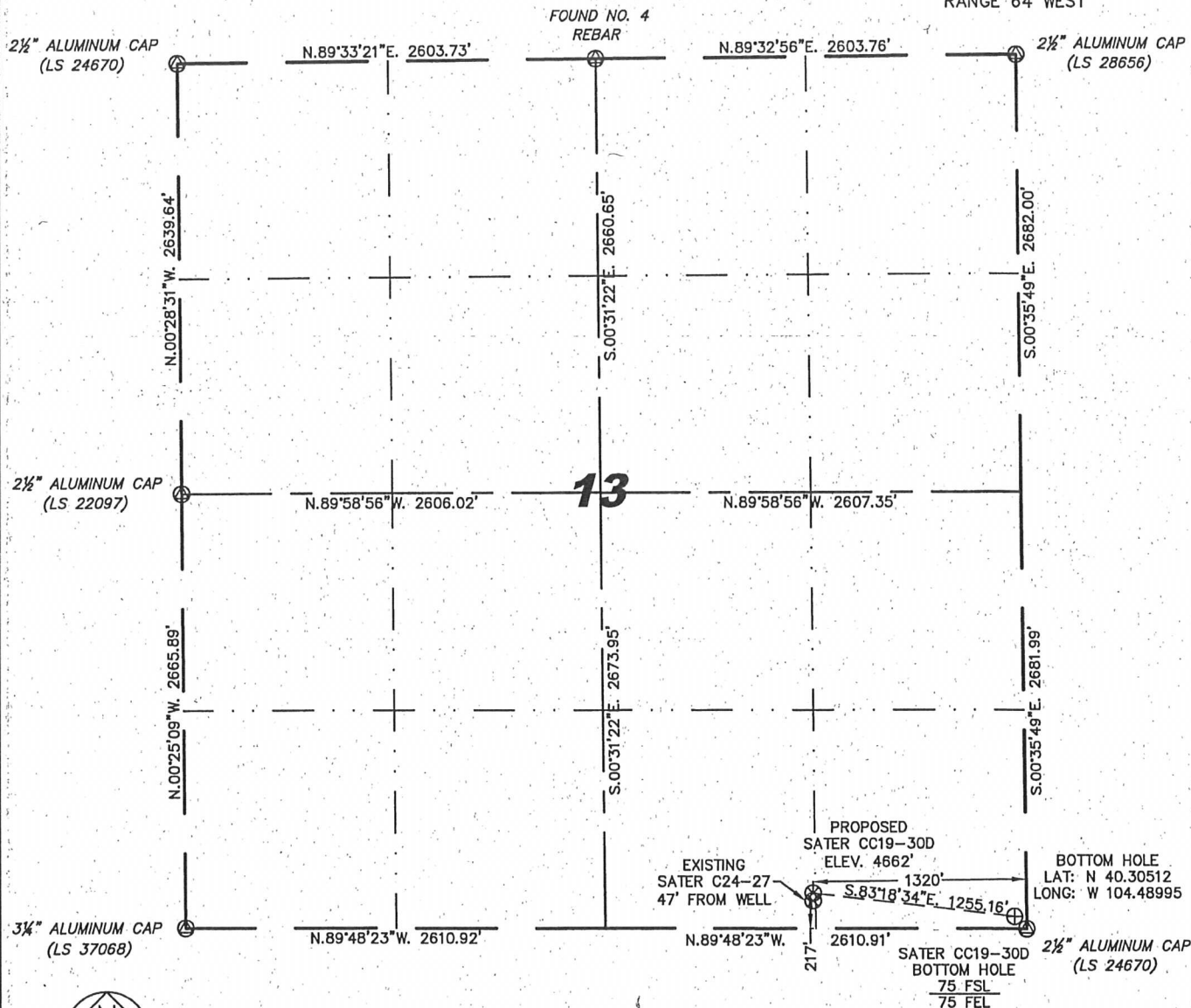
1102 West 19th Street P.O. BOX 2073

Cheyenne, Wyoming 82009

WELL LOCATION CERTIFICATE

THIS MAP DOES NOT REPRESENT A BOUNDARY SURVEY

SECTION 13
TOWNSHIP 4 NORTH
RANGE 64 WEST



IN ACCORDANCE WITH A REQUEST FROM BEAU FRITZ - NOBLE ENERGY INC, STEIL SURVEYING SERVICES, LLC HAS DETERMINED THE LOCATION OF THE SATER CC19-30D WELL TO BE 217' FSL, 1320' FEL, AS MEASURED AT NINETY (90) DEGREES FROM THE SECTION LINES, SECTION 13, TOWNSHIP 4 NORTH, RANGE 64 WEST, 6TH PRINCIPLE MERIDIAN, WELD COUNTY, COLORADO.

I HEREBY CERTIFY THAT THIS WELL LOCATION CERTIFICATE WAS PREPARED BY ME, OR UNDER MY DIRECT SUPERVISION, THAT THE FIELD WORK WAS COMPLETED ON 09/10/2010, FOR AND ON BEHALF OF NOBLE ENERGY INC, THAT IT IS NOT A LAND SURVEY PLAT OR AN IMPROVEMENT SURVEY PLAT, AND THAT IT IS NOT TO BE RELIED UPON FOR ESTABLISHMENT OF FENCE, BUILDING, OR OTHER FUTURE IMPROVEMENT LINES.

NOTES:

- 1) BASIS OF BEARINGS FOR THIS MAP ARE BASED UPON GPS OBSERVATIONS MADE ON 10/03/2007 BETWEEN MONUMENTS LOCATED AT THE SOUTHEAST SECTION CORNER AND THE NORTHEAST SECTION CORNER OF SAID SECTION AND WITH ALL BEARINGS SHOWN HEREON RELATIVE THERETO.
- 2) ELEVATIONS ARE BASED UPON NGS OPUS SOLUTION NAVD 88 DATUM.
- 3) THE NEAREST EXISTING WELL IS: SATER C24-27, 47' SOUTH.
- 4) SEE VISIBLE IMPROVEMENTS EXHIBIT FOR ALL IMPROVEMENTS WITHIN 600'.
- 5) THE LOCATION FALLS IN PASTURE LAND.

LATITUDE & LONGITUDE (NAD 83 SURFACE HOLE):

LATITUDE: N 40.30556°
LONGITUDE: W 104.49442°
PDOP: 3.3
QUARTER-QUARTER: SW/4SE/4
NEAREST PROPERTY LINE: 217' SOUTH

LEGEND

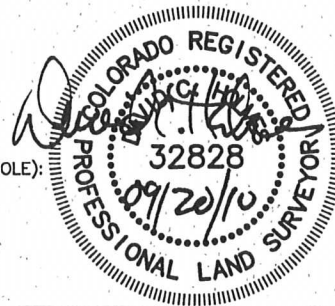
- ⊙ FOUND SURVEY MONUMENT PER MONUMENT RECORD - EXCEPTIONS NOTED.
- (C) CALCULATED DIMENSION

NOTICE: According to Colorado law you MUST commence any legal action based upon any defect in this W.L.C. within three years after you first discover such defect. In no event may any action based upon any defect in this W.L.C. be commenced more than ten years from this sold date of the certification shown hereon.

David C. Holmes
Professional Land Surveyor Registration No. 32828
State of Colorado

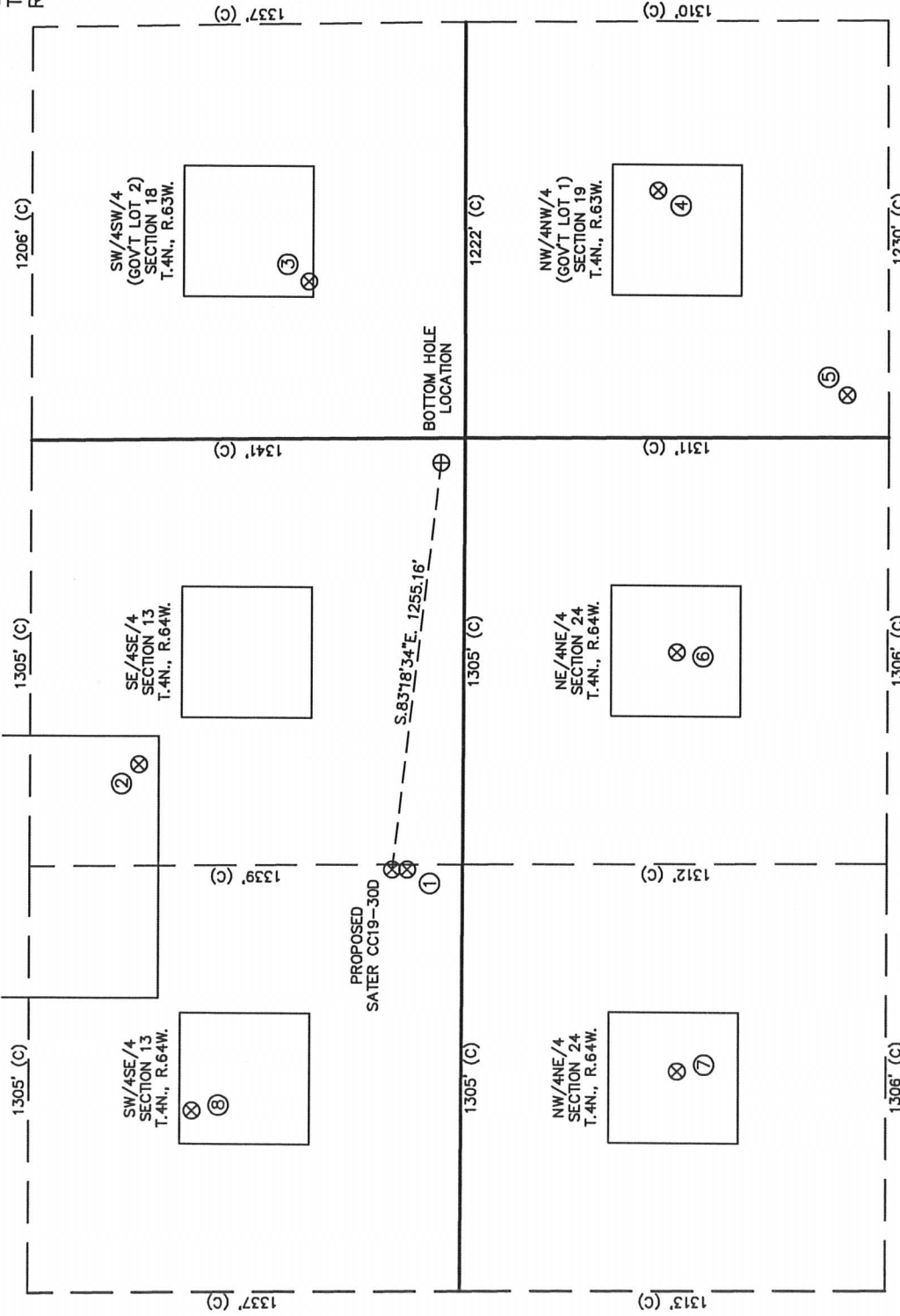
JOB #: 10086

Completed 09/14/2010



SECTION 13
TOWNSHIP 4 NORTH
RANGE 64 WEST

SKETCH - SATER CC19-30D



- | | | | | | | | | | | | | | | | |
|---|---|---|---|---|--|---|---|---|--|---|--|---|--|---|--|
| ① | SATER C24-27
SE/SE SEC. 13
T.4N., R.64W.
170' FSL
EL 4682'
N 40.30543
W 104.49442
PDOP 2.2 | ② | UPV 13-16/4
SE/SE SEC. 13
T.4N., R.64W.
1002' FSL
EL 4684'
N 40.30770
W 104.49325
PDOP 2.5 | ③ | WATKINS 18-13
SW/SW SEC. 18
T.4N., R.63W.
484' FSL
EL 4645'
N 40.30623
W 104.48795
PDOP 2.4 | ④ | SATER 11-19U
NW/NW SEC. 19
T.4N., R.63W.
597' FSL
EL 4674'
N 40.30325
W 104.48698
PDOP 2.0 | ⑤ | UNIQUL
NW/NW SEC. 19
T.4N., R.63W.
1183' FSL
EL 4686'
N 40.30166
W 104.48923
PDOP 1.9 | ⑥ | SPIKE STATE
GWS C24-01
NE/NE SEC. 24
T.4N., R.64W.
659' FSL
EL 4697'
N 40.30313
W 104.49205
PDOP 2.2 | ⑦ | SPIKE STATE
GWS C24-02
NW/NE SEC. 24
T.4N., R.64W.
667' FSL
EL 4686'
N 40.30316
W 104.49664
PDOP 2.1 | ⑧ | UPV 13-15/4
SW/SE SEC. 13
T.4N., R.64W.
831' FSL
EL 4653'
N 40.30727
W 104.49705
PDOP 1.5 |
|---|---|---|---|---|--|---|---|---|--|---|--|---|--|---|--|



Scale: 1" = 500'

- NOTES:
- THIS SKETCH DOES NOT REPRESENT A BOUNDARY SURVEY.
 - THE DATUM FOR THE LATITUDES AND LONGITUDES ON THIS SKETCH IS NAD83.