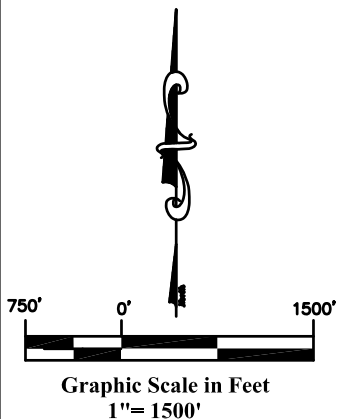
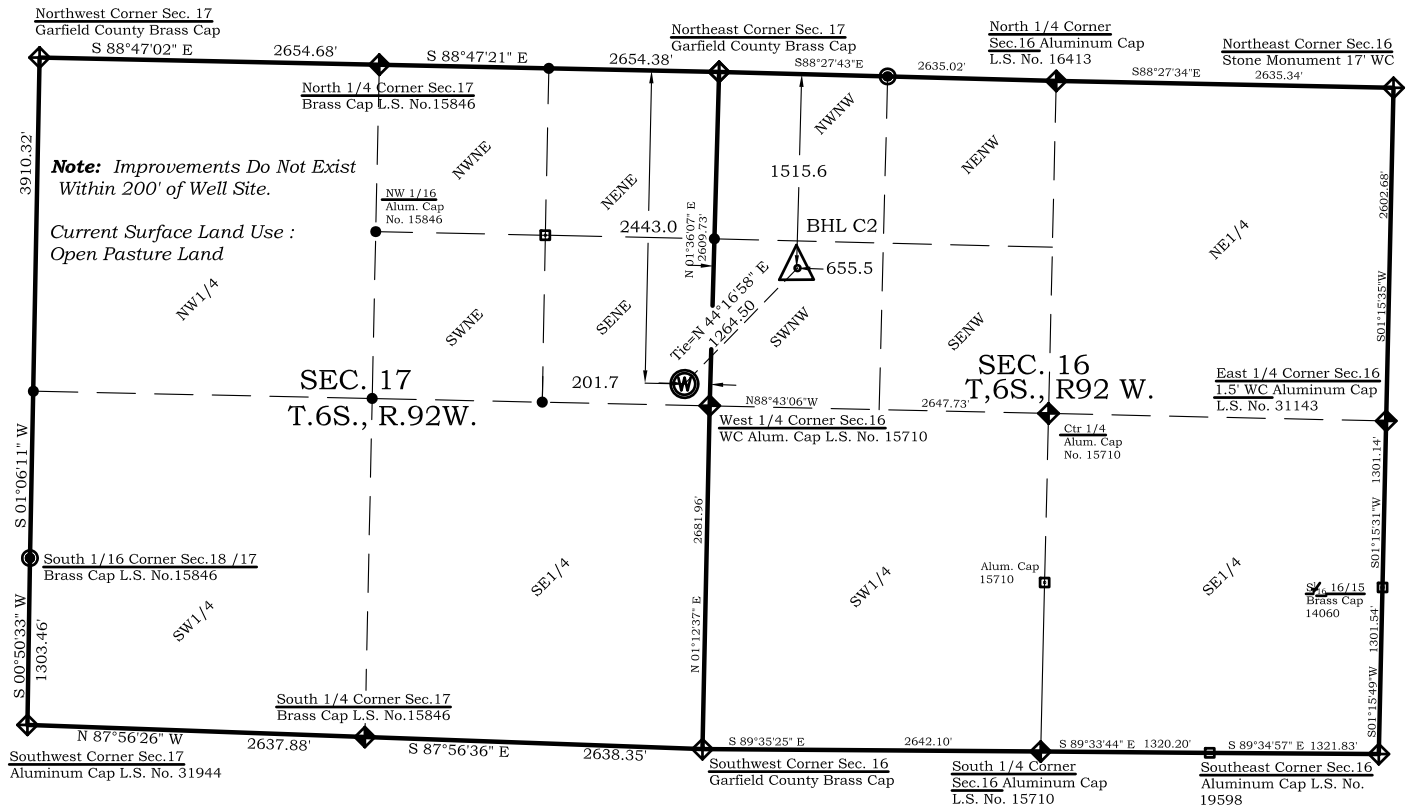


ROBINSON C2

Well Location Plat

Section 17, Township 6 South, Range 92 West







SURVEYOR'S CERTIFICATE

I, SCOTT E. AIBNER, A REGISTERED LAND SURVEYOR, LICENSED UNDER THE LAWS OF THE STATE OF COLORADO DO HEREBY CERTIFY THAT THE SURVEY SHOWN HEREON WAS PREPARED BY RIVER VALLEY SURVEY, INC., FOR ANTERO RESOURCES, BY MEANS OF A TOTAL STATION UNDER MY DIRECT SUPERVISION AND HAS BEEN STAKED ON THE GROUND AS SHOWN ON THE PLAT AND THAT THIS PLAT IS A TRUE REPRESENTATION THEREOF.

BY: 
SCOTT E. AIBNER, LAND SURV. REG. NO. 31143

Legend

-  - Field Surveyed Section Corner
-  - Field Surveyed Quarter Corner
-  - Calculated Section Corner Location
-  - Field Surveyed 1/6 Corner

Prepared For Antero Resources

**Proposed Robinson C2 Well Situate in The SE 1/4 NE 1/4
Section 17, Township 6 South, Range 92 West of the 6 th.
Principal Meridian, County of Garfield, State of Colorado**

Bottom: Robinson C2

1516' FNL
656' FWL
NAD83
Lat: 39.529809035°N
Long: 107.678910113°W
NAD27
Lat: 39.529828501°N
Long: 107.678294400°W

Surface: Robinson C2

2443' FNL
202' FEL
Gnd El= 5640.2
Pad El= 5644.5
NAD83
Lat: 39.527253367°N
Long: 107.681942254°W
NAD27
Lat: 39.527272834°N
Long: 107.681326464°W
UTM 13 NORTH
NAD 1983
NORTHING
14365864.246
EASTING
884129.367

Notes:

1. LATITUDE AND LONGITUDE COORDINATES ARE DIFFERENTIALLY CORRECTED AND BASED ON PUBLISHED NGS CONTROL STATION "WDP-5". SYSTEM: UTM ZONE: 13 NORTH DATUM: NAD 1983 (CONUS)
2. ELEVATIONS ARE BASED ON NAVD OF 1983.
3. ALL BOTTOM AND TOP HOLE LOCATIONS ARE MEASURED 90 DEGREES FROM SECTION LINE.
4. USGS QUADRANGLE MAP "GIBSON GULCH".
5. CURRENT SURFACE LAND USE: OPEN RANGE LAND.
6. PDOP AT THE TIME OF LOCATION OF SURFACE WELL = 2.5



River Valley Survey, Inc.
110 East 3rd. Street, Suite 213
Rifle, Colorado 81650
Ph: 970-379-7846

Project: Robinson C Pad	Proj. No. 06001-18
Field Date: 01-19-07	Scale: 1" = 1000'
Date: 04-14-11	Sheet: 1 of 7

Well Location Plat
Prepared For Antero Resources
Situate In:
SE 1/4 NE 1/4 Section 17, T6S., R. 92 W.
of the 6th P.M., Garfield County,
Colorado

