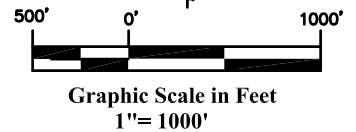
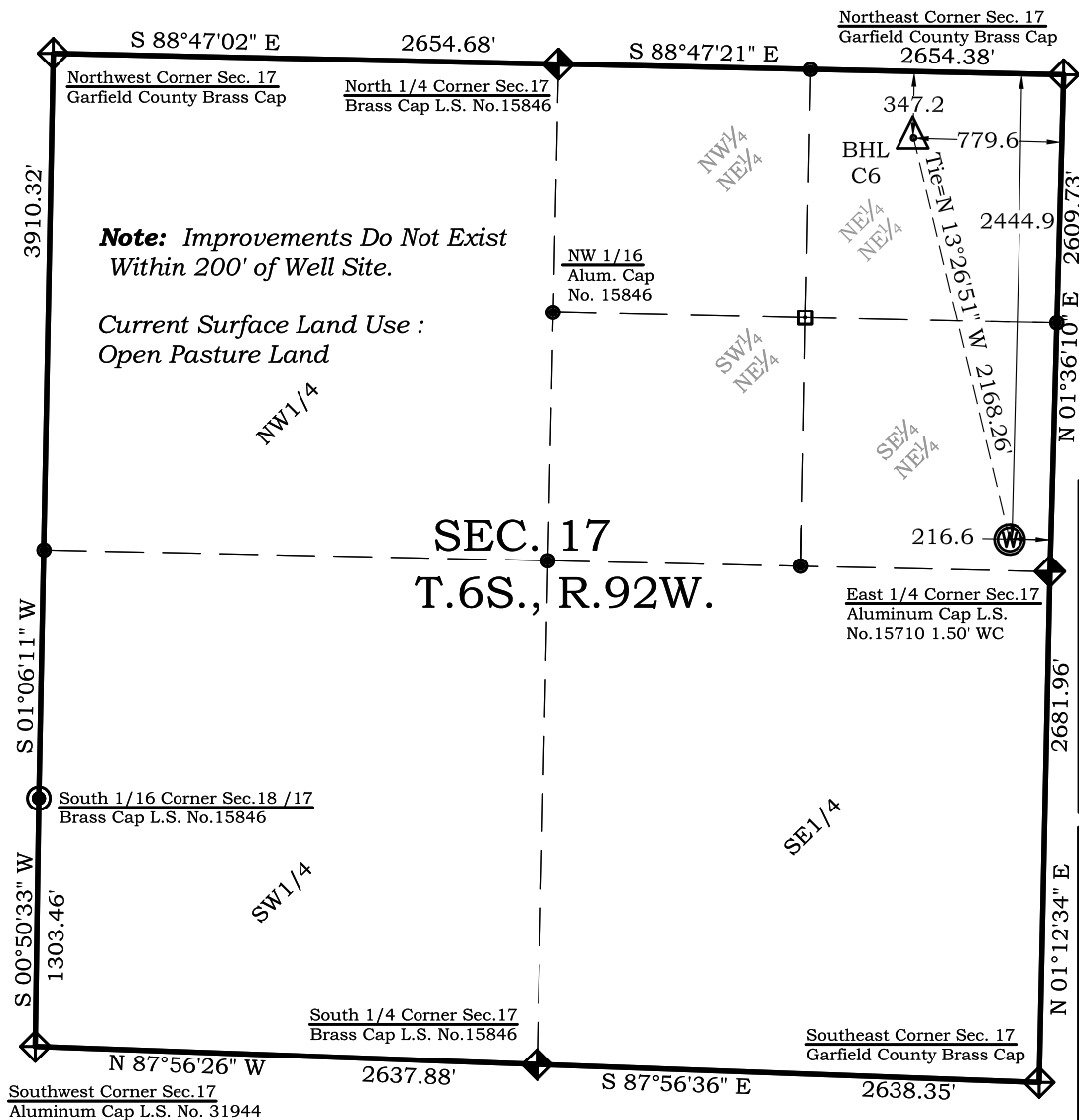


ROBINSON C6

Well Location Plat

Section 17, Township 6 South, Range 92 West



Legend

- ◈ - Field Surveyed Section Corner
- ◈ - Field Surveyed Quarter Corner
- ⊙ - Calculated Section Corner Location
- ◻ - Field Surveyed 1/6 Corner

Bottom Hole: Robinson C6

347' FNL
780' FEL
NAD83
Lat: 39.532991928°N
Long: 107.684004144°W
NAD27
Lat: 39.533011401°N
Long: 107.683388200°W

Surface: Robinson C6

2445' FNL
217' FEL
Gnd El= 5640.2
Pad El= 5644.5
NAD83
Lat: 39.527247882°N
Long: 107.681994942°W
NAD27
Lat: 39.527267349°N
Long: 107.681379150°W
UTM 13 NORTH
NAD 1983
NORTHING
14365862.691
EASTING
884114.448

Prepared For Antero Resources
Proposed Robinson C6 Well Situate in The SE 1/4 NE 1/4
Section 17, Township 6 South, Range 92 West of the 6 th.
Principal Meridian, County of Garfield, State of Colorado

SURVEYOR'S CERTIFICATE

I, SCOTT E. AIBNER, A REGISTERED LAND SURVEYOR, LICENSED UNDER THE LAWS OF THE STATE OF COLORADO DO HEREBY CERTIFY THAT THE SURVEY SHOWN HEREON WAS PREPARED BY RIVER VALLEY SURVEY, INC., FOR ANTERO RESOURCES, BY ME OR UNDER MY DIRECT SUPERVISION AND THAT THIS PLAT IS A TRUE REPRESENTATION THEREOF.

BY: 
SCOTT E. AIBNER, COLORADO REG. NO. 31143

Notes:

- 1.) LATITUDE AND LONGITUDE COORDINATES ARE DIFFERENTIALLY CORRECTED AND BASED ON PUBLISHED NGS CONTROL STATION "WDP-5".
SYSTEM: UTM ZONE: 13 NORTH DATUM: NAD 1983 (CONUS)
- 2.) ELEVATIONS ARE BASED ON NAVD OF 1929.
- 3.) ALL BOTTOM AND TOP HOLE LOCATIONS ARE MEASURED 90 DEGREES FROM SECTION LINE.
- 4.) USGS QUADRANGLE MAP "SILT CO".
- 5.) CURRENT SURFACE LAND USE: OPEN RANGELAND
- 6.) PDOP AT THE TIME OF LOCATION OF SURFACE WELL = 1.2
- 7.) BOTTOM HOLE DISTANCE TO NEAREST LEASE LINE IS 445.6'



River Valley Survey, Inc.
110 East 3rd. Street, Suite 207
Rifle, Colorado 81650
Ph: 970-379-7846

Project: Robinson C Pad
Field Date: 01-19-07
Date: 04-11-11

Proj. No. 06001-18
Scale: 1" = 1000'
Sheet: 1 of 7

Well Location Plat
Prepared For Antero Resources
Situate In:
SE 1/4 NE 1/4 Section 17, T.6S., R. 92 W.
of the 6th P.M., Garfield County,
Colorado

