

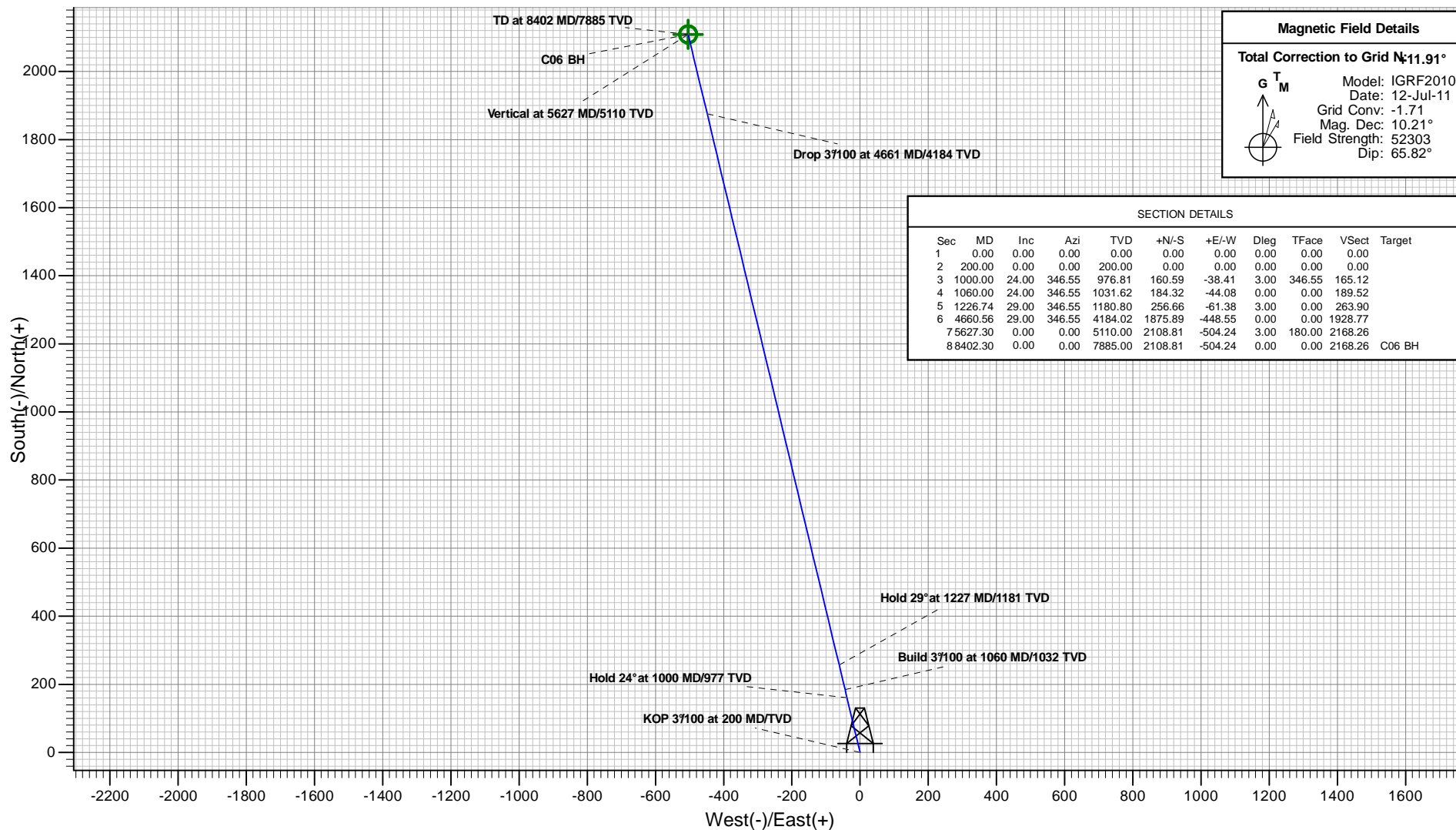


## PLAN VIEW

### Antero Resources

C06 (111369)

Project: Robinson  
Site: Robinson C Pad  
Well: C06 (111369)  
Wellbore: C06  
Design: C06\_P01



#### Magnetic Field Details

Total Correction to Grid N:  $-11.91^\circ$

Model: IGRF2010  
Date: 12-Jul-11  
Grid Conv:  $-1.71$   
Mag. Dec:  $10.21^\circ$   
Field Strength: 52303  
Dip:  $65.82^\circ$

#### SECTION DETAILS

Sec	MD	Inc	Azi	TVD	+N/-S	+E/-W	Dleg	TFace	VSec	Target
1	0.00	0.00	0.00	0.00	0.00	0.00	0.00	0.00	0.00	
2	200.00	0.00	0.00	200.00	0.00	0.00	0.00	0.00	0.00	
3	1000.00	24.00	346.55	976.81	160.59	-38.41	3.00	346.55	165.12	
4	1060.00	24.00	346.55	1031.62	184.32	-44.08	0.00	0.00	189.52	
5	1226.74	29.00	346.55	1180.80	256.66	-61.38	3.00	0.00	263.90	
6	4660.56	29.00	346.55	4184.02	1875.89	-448.55	0.00	0.00	1928.77	
7	5627.30	0.00	0.00	5110.00	2108.81	-504.24	3.00	180.00	2168.26	
8	8402.30	0.00	0.00	7885.00	2108.81	-504.24	0.00	0.00	2168.26	C06 BH

Plan: C06\_P01  
Created By: ARK Directional Services  
Date: 14:29, April 13 2011

#### PROJECT DETAILS: Robinson

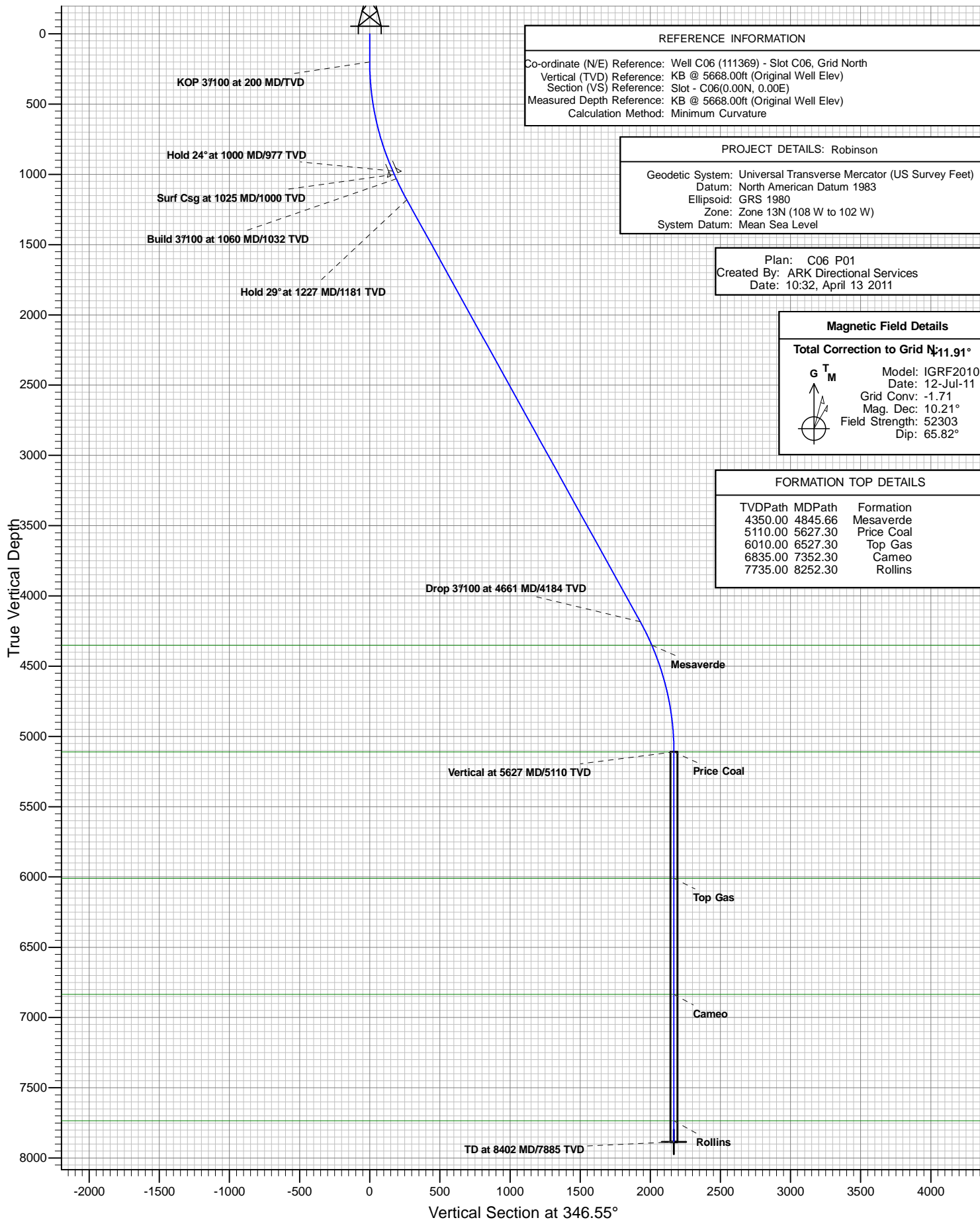
Geodetic System: Universal Transverse Mercator (US Survey Feet)  
Datum: North American Datum 1983  
Ellipsoid: GRS 1980  
Zone: Zone 13N (108 W to 102 W)  
System Datum: Mean Sea Level

#### REFERENCE INFORMATION

Co-ordinate (N/E) Reference: Well C06 (111369) - Slot C06, Grid North  
Vertical (TVD) Reference: KB @ 5668.00ft (Original Well Elev)  
Section (VS) Reference: Slot - C06(0.00N, 0.00E)  
Measured Depth Reference: KB @ 5668.00ft (Original Well Elev)  
Calculation Method: Minimum Curvature

C06 (111369)

## VERTICAL SECTION VIEW



# **Antero Resources**

**Robinson**

**Robinson C Pad**

**C06 (111369) - Slot C06**

**C06**

**Plan: C06 P01**

## **Standard Planning Report - Geographic**

**13 April, 2011**

# ARK Directional Services

## Planning Report - Geographic

<b>Database:</b>	EDM SERVER DB	<b>Local Co-ordinate Reference:</b>	Well C06 (111369) - Slot C06
<b>Company:</b>	Antero Resources	<b>TVD Reference:</b>	KB @ 5668.00ft (Original Well Elev)
<b>Project:</b>	Robinson	<b>MD Reference:</b>	KB @ 5668.00ft (Original Well Elev)
<b>Site:</b>	Robinson C Pad	<b>North Reference:</b>	Grid
<b>Well:</b>	C06 (111369)	<b>Survey Calculation Method:</b>	Minimum Curvature
<b>Wellbore:</b>	C06		
<b>Design:</b>	C06 P01		

<b>Project</b>	Robinson		
<b>Map System:</b>	Universal Transverse Mercator (US Survey Feet)	<b>System Datum:</b>	Mean Sea Level
<b>Geo Datum:</b>	North American Datum 1983		
<b>Map Zone:</b>	Zone 13N (108 W to 102 W)		

Site		Robinson C Pad			
Site Position:		Northing:	14,365,851.290 usft	Latitude:	39.527207654°N
From:	Map	Easting:	884,005.040 usft	Longitude:	107.682381321°W
Position Uncertainty:	0.00 ft	Slot Radius:	13.20 in	Grid Convergence:	-1.71 °

Well	C06 (111369) - Slot C06					
Well Position	+N/-S	0.00 ft	Northing:	14,365,862.691 usft	Latitude:	39.527247880°N
	+E/-W	0.00 ft	Easting:	884,114.448 usft	Longitude:	107.681994942°W
Position Uncertainty		0.00 ft	Wellhead Elevation:		Ground Level:	5,644.00 ft

<b>Wellbore</b>	C06				
<b>Magnetics</b>	<b>Model Name</b>	<b>Sample Date</b>	<b>Declination (°)</b>	<b>Dip Angle (°)</b>	<b>Field Strength (nT)</b>
	IGRF2010	2011/07/12	10.21	65.82	52,303

<b>Design</b>	C06 P01				
<b>Audit Notes:</b>					
<b>Version:</b>	<b>Phase:</b>	PROTOTYPE		<b>Tie On Depth:</b>	0.00
<b>Vertical Section:</b>	<b>Depth From (TVD) (ft)</b>	<b>+N/-S (ft)</b>	<b>+E/-W (ft)</b>	<b>Direction (°)</b>	
	0.00	0.00	0.00	346.55	

<b>Plan Sections</b>										
Measured Depth (ft)	Inclination (°)	Azimuth (°)	Vertical Depth (ft)	+N/-S (ft)	+E/-W (ft)	Dogleg Rate (°/100ft)	Build Rate (°/100ft)	Turn Rate (°/100ft)	TFO (°)	Target
0.00	0.00	0.00	0.00	0.00	0.00	0.00	0.00	0.00	0.00	
200.00	0.00	0.00	200.00	0.00	0.00	0.00	0.00	0.00	0.00	
1,000.00	24.00	346.55	976.81	160.59	-38.41	3.00	3.00	0.00	346.55	
1,060.00	24.00	346.55	1,031.62	184.32	-44.08	0.00	0.00	0.00	0.00	
1,226.74	29.00	346.55	1,180.80	256.66	-61.38	3.00	3.00	0.00	0.00	
4,660.56	29.00	346.55	4,184.02	1,875.89	-448.55	0.00	0.00	0.00	0.00	
5,627.30	0.00	0.00	5,110.00	2,108.81	-504.24	3.00	-3.00	0.00	180.00	
8,402.30	0.00	0.00	7,885.00	2,108.81	-504.24	0.00	0.00	0.00	0.00	C06 BH

# ARK Directional Services

## Planning Report - Geographic

<b>Database:</b>	EDM SERVER DB	<b>Local Co-ordinate Reference:</b>	Well C06 (111369) - Slot C06
<b>Company:</b>	Antero Resources	<b>TVD Reference:</b>	KB @ 5668.00ft (Original Well Elev)
<b>Project:</b>	Robinson	<b>MD Reference:</b>	KB @ 5668.00ft (Original Well Elev)
<b>Site:</b>	Robinson C Pad	<b>North Reference:</b>	Grid
<b>Well:</b>	C06 (111369)	<b>Survey Calculation Method:</b>	Minimum Curvature
<b>Wellbore:</b>	C06		
<b>Design:</b>	C06 P01		

Planned Survey									
Measured Depth (ft)	Inclination (°)	Azimuth (°)	Vertical Depth (ft)	+N/-S (ft)	+E/-W (ft)	Map Northing (usft)	Map Easting (usft)	Latitude	Longitude
0.00	0.00	0.00	0.00	0.00	0.00	14,365,862.691	884,114.448	39.527247880°N	107.681994942°W
100.00	0.00	0.00	100.00	0.00	0.00	14,365,862.691	884,114.448	39.527247880°N	107.681994942°W
200.00	0.00	0.00	200.00	0.00	0.00	14,365,862.691	884,114.448	39.527247880°N	107.681994942°W
<b>KOP 3°/100 at 200 MD/TVD</b>									
300.00	3.00	346.55	299.95	2.55	-0.61	14,365,865.236	884,113.839	39.527254814°N	107.681997368°W
400.00	6.00	346.55	399.63	10.18	-2.43	14,365,872.866	884,112.014	39.527275597°N	107.682004638°W
500.00	9.00	346.55	498.77	22.87	-5.47	14,365,885.559	884,108.979	39.527310171°N	107.682016732°W
600.00	12.00	346.55	597.08	40.59	-9.71	14,365,903.281	884,104.741	39.527358442°N	107.682033618°W
700.00	15.00	346.55	694.31	63.29	-15.14	14,365,925.983	884,099.311	39.527420277°N	107.682055249°W
800.00	18.00	346.55	790.18	90.91	-21.74	14,365,953.602	884,092.706	39.527495508°N	107.682081566°W
900.00	21.00	346.55	884.43	123.37	-29.51	14,365,986.063	884,084.943	39.527583928°N	107.682112497°W
1,000.00	24.00	346.55	976.81	160.59	-38.41	14,366,023.278	884,076.043	39.527685294°N	107.682147957°W
<b>Hold 24° at 1000 MD/977 TVD</b>									
1,025.00	24.00	346.55	999.65	170.48	-40.77	14,366,033.167	884,073.678	39.527712231°N	107.682157380°W
<b>Surf Csg at 1025 MD/1000 TVD</b>									
1,060.00	24.00	346.55	1,031.62	184.32	-44.08	14,366,047.013	884,070.367	39.527749945°N	107.682170569°W
<b>Build 3°/100 at 1060 MD/1032 TVD</b>									
1,100.00	25.20	346.55	1,067.99	200.52	-47.95	14,366,063.207	884,066.495	39.527794056°N	107.682185997°W
1,200.00	28.20	346.55	1,157.32	244.21	-58.40	14,366,106.902	884,056.047	39.527913074°N	107.682227624°W
1,226.74	29.00	346.55	1,180.80	256.66	-61.38	14,366,119.353	884,053.070	39.527946988°N	107.682239486°W
<b>Hold 29° at 1227 MD/1181 TVD</b>									
1,300.00	29.00	346.55	1,244.87	291.21	-69.64	14,366,153.898	884,044.810	39.528041082°N	107.682272396°W
1,400.00	29.00	346.55	1,332.33	338.36	-80.91	14,366,201.053	884,033.535	39.528169525°N	107.682317321°W
1,500.00	29.00	346.55	1,419.79	385.52	-92.19	14,366,248.208	884,022.260	39.528297968°N	107.682362245°W
1,600.00	29.00	346.55	1,507.25	432.67	-103.46	14,366,295.363	884,010.985	39.528426411°N	107.682407170°W
1,700.00	29.00	346.55	1,594.71	479.83	-114.74	14,366,342.518	883,999.710	39.528554854°N	107.682452095°W
1,800.00	29.00	346.55	1,682.17	526.98	-126.01	14,366,389.673	883,988.435	39.528683297°N	107.682497020°W
1,900.00	29.00	346.55	1,769.63	574.14	-137.29	14,366,436.828	883,977.159	39.528811739°N	107.682541945°W
2,000.00	29.00	346.55	1,857.09	621.29	-148.56	14,366,483.983	883,965.884	39.528940182°N	107.682586870°W
2,100.00	29.00	346.55	1,944.55	668.45	-159.84	14,366,531.138	883,954.609	39.529068625°N	107.682631796°W
2,200.00	29.00	346.55	2,032.01	715.60	-171.11	14,366,578.293	883,943.334	39.529197068°N	107.682676722°W
2,300.00	29.00	346.55	2,119.47	762.76	-182.39	14,366,625.448	883,932.059	39.529325510°N	107.682721648°W
2,400.00	29.00	346.55	2,206.93	809.91	-193.66	14,366,672.603	883,920.784	39.529453953°N	107.682766574°W
2,500.00	29.00	346.55	2,294.39	857.07	-204.94	14,366,719.758	883,909.509	39.529582396°N	107.682811500°W
2,600.00	29.00	346.55	2,381.85	904.22	-216.22	14,366,766.914	883,898.233	39.529710839°N	107.682856427°W
2,700.00	29.00	346.55	2,469.31	951.38	-227.49	14,366,814.069	883,886.958	39.529839281°N	107.682901353°W
2,800.00	29.00	346.55	2,556.77	998.54	-238.77	14,366,861.224	883,875.683	39.529967724°N	107.682946280°W
2,900.00	29.00	346.55	2,644.23	1,045.69	-250.04	14,366,908.379	883,864.408	39.530096166°N	107.682991207°W
3,000.00	29.00	346.55	2,731.69	1,092.85	-261.32	14,366,955.534	883,853.133	39.530224609°N	107.683036134°W
3,100.00	29.00	346.55	2,819.15	1,140.00	-272.59	14,367,002.689	883,841.858	39.530353052°N	107.683081062°W
3,200.00	29.00	346.55	2,906.61	1,187.16	-283.87	14,367,049.844	883,830.582	39.530481494°N	107.683125989°W
3,300.00	29.00	346.55	2,994.07	1,234.31	-295.14	14,367,096.999	883,819.307	39.530609937°N	107.683170917°W
3,400.00	29.00	346.55	3,081.53	1,281.47	-306.42	14,367,144.154	883,808.032	39.530738379°N	107.683215845°W
3,500.00	29.00	346.55	3,168.99	1,328.62	-317.69	14,367,191.309	883,796.757	39.530866821°N	107.683260773°W
3,600.00	29.00	346.55	3,256.45	1,375.78	-328.97	14,367,238.464	883,785.482	39.530995264°N	107.683305701°W
3,700.00	29.00	346.55	3,343.91	1,422.93	-340.24	14,367,285.619	883,774.207	39.531123706°N	107.683350630°W
3,800.00	29.00	346.55	3,431.37	1,470.09	-351.52	14,367,332.774	883,762.932	39.531252149°N	107.683395558°W
3,900.00	29.00	346.55	3,518.83	1,517.24	-362.79	14,367,379.930	883,751.656	39.531380591°N	107.683440487°W
4,000.00	29.00	346.55	3,606.29	1,564.40	-374.07	14,367,427.085	883,740.381	39.531509033°N	107.683485416°W
4,100.00	29.00	346.55	3,693.75	1,611.55	-385.34	14,367,474.240	883,729.106	39.531637476°N	107.683530345°W
4,200.00	29.00	346.55	3,781.21	1,658.71	-396.62	14,367,521.395	883,717.831	39.531765918°N	107.683575275°W
4,300.00	29.00	346.55	3,868.67	1,705.86	-407.89	14,367,568.550	883,706.556	39.531894360°N	107.683620203°W
4,400.00	29.00	346.55	3,956.13	1,753.02	-419.17	14,367,615.705	883,695.281	39.532022802°N	107.683665133°W
4,500.00	29.00	346.55	4,043.59	1,800.17	-430.44	14,367,662.860	883,684.005	39.532151244°N	107.683710063°W

# ARK Directional Services

## Planning Report - Geographic

<b>Database:</b>	EDM SERVER DB	<b>Local Co-ordinate Reference:</b>	Well C06 (111369) - Slot C06
<b>Company:</b>	Antero Resources	<b>TVD Reference:</b>	KB @ 5668.00ft (Original Well Elev)
<b>Project:</b>	Robinson	<b>MD Reference:</b>	KB @ 5668.00ft (Original Well Elev)
<b>Site:</b>	Robinson C Pad	<b>North Reference:</b>	Grid
<b>Well:</b>	C06 (111369)	<b>Survey Calculation Method:</b>	Minimum Curvature
<b>Wellbore:</b>	C06		
<b>Design:</b>	C06 P01		

Planned Survey									
Measured Depth (ft)	Inclination (°)	Azimuth (°)	Vertical Depth (ft)	+N/-S (ft)	+E/-W (ft)	Map Northing (usft)	Map Easting (usft)	Latitude	Longitude
4,600.00	29.00	346.55	4,131.05	1,847.33	-441.72	14,367,710.015	883,672.730	39.532279687°N	107.683754993°W
4,660.56	29.00	346.55	4,184.02	1,875.89	-448.55	14,367,738.572	883,665.902	39.532357471°N	107.683782202°W
<b>Drop 3°/100 at 4661 MD/4184 TVD</b>									
4,700.00	27.82	346.55	4,218.71	1,894.14	-452.91	14,367,756.822	883,661.538	39.532407182°N	107.683799592°W
4,800.00	24.82	346.55	4,308.33	1,937.25	-463.22	14,367,799.939	883,651.229	39.532524623°N	107.683840674°W
4,845.66	23.45	346.55	4,350.00	1,955.41	-467.56	14,367,818.097	883,646.887	39.532574083°N	107.683857976°W
<b>Mesaverde</b>									
4,900.00	21.82	346.55	4,400.15	1,975.75	-472.42	14,367,838.434	883,642.024	39.532629478°N	107.683877353°W
5,000.00	18.82	346.55	4,493.92	2,009.52	-480.50	14,367,872.203	883,633.950	39.532721458°N	107.683909529°W
5,100.00	15.82	346.55	4,589.37	2,038.47	-487.42	14,367,901.153	883,627.028	39.532800312°N	107.683937113°W
5,200.00	12.82	346.55	4,686.25	2,062.52	-493.17	14,367,925.204	883,621.277	39.532865823°N	107.683960030°W
5,300.00	9.82	346.55	4,784.30	2,081.60	-497.74	14,367,944.291	883,616.713	39.532917813°N	107.683978217°W
5,400.00	6.82	346.55	4,883.23	2,095.67	-501.10	14,367,958.361	883,613.349	39.532956138°N	107.683991623°W
5,500.00	3.82	346.55	4,982.79	2,104.69	-503.26	14,367,967.376	883,611.193	39.532980693°N	107.684000213°W
5,600.00	0.82	346.55	5,082.70	2,108.62	-504.20	14,367,971.311	883,610.252	39.532991411°N	107.684003963°W
5,627.30	0.00	0.00	5,110.00	2,108.81	-504.24	14,367,971.501	883,610.207	39.532991928°N	107.684004144°W
<b>Vertical at 5627 MD/5110 TVD - Price Coal</b>									
5,700.00	0.00	0.00	5,182.70	2,108.81	-504.24	14,367,971.501	883,610.207	39.532991928°N	107.684004144°W
5,800.00	0.00	0.00	5,282.70	2,108.81	-504.24	14,367,971.501	883,610.207	39.532991928°N	107.684004144°W
5,900.00	0.00	0.00	5,382.70	2,108.81	-504.24	14,367,971.501	883,610.207	39.532991928°N	107.684004144°W
6,000.00	0.00	0.00	5,482.70	2,108.81	-504.24	14,367,971.501	883,610.207	39.532991928°N	107.684004144°W
6,100.00	0.00	0.00	5,582.70	2,108.81	-504.24	14,367,971.501	883,610.207	39.532991928°N	107.684004144°W
6,200.00	0.00	0.00	5,682.70	2,108.81	-504.24	14,367,971.501	883,610.207	39.532991928°N	107.684004144°W
6,300.00	0.00	0.00	5,782.70	2,108.81	-504.24	14,367,971.501	883,610.207	39.532991928°N	107.684004144°W
6,400.00	0.00	0.00	5,882.70	2,108.81	-504.24	14,367,971.501	883,610.207	39.532991928°N	107.684004144°W
6,500.00	0.00	0.00	5,982.70	2,108.81	-504.24	14,367,971.501	883,610.207	39.532991928°N	107.684004144°W
6,527.30	0.00	0.00	6,010.00	2,108.81	-504.24	14,367,971.501	883,610.207	39.532991928°N	107.684004144°W
<b>Top Gas</b>									
6,600.00	0.00	0.00	6,082.70	2,108.81	-504.24	14,367,971.501	883,610.207	39.532991928°N	107.684004144°W
6,700.00	0.00	0.00	6,182.70	2,108.81	-504.24	14,367,971.501	883,610.207	39.532991928°N	107.684004144°W
6,800.00	0.00	0.00	6,282.70	2,108.81	-504.24	14,367,971.501	883,610.207	39.532991928°N	107.684004144°W
6,900.00	0.00	0.00	6,382.70	2,108.81	-504.24	14,367,971.501	883,610.207	39.532991928°N	107.684004144°W
7,000.00	0.00	0.00	6,482.70	2,108.81	-504.24	14,367,971.501	883,610.207	39.532991928°N	107.684004144°W
7,100.00	0.00	0.00	6,582.70	2,108.81	-504.24	14,367,971.501	883,610.207	39.532991928°N	107.684004144°W
7,200.00	0.00	0.00	6,682.70	2,108.81	-504.24	14,367,971.501	883,610.207	39.532991928°N	107.684004144°W
7,300.00	0.00	0.00	6,782.70	2,108.81	-504.24	14,367,971.501	883,610.207	39.532991928°N	107.684004144°W
7,352.30	0.00	0.00	6,835.00	2,108.81	-504.24	14,367,971.501	883,610.207	39.532991928°N	107.684004144°W
<b>Cameo</b>									
7,400.00	0.00	0.00	6,882.70	2,108.81	-504.24	14,367,971.501	883,610.207	39.532991928°N	107.684004144°W
7,500.00	0.00	0.00	6,982.70	2,108.81	-504.24	14,367,971.501	883,610.207	39.532991928°N	107.684004144°W
7,600.00	0.00	0.00	7,082.70	2,108.81	-504.24	14,367,971.501	883,610.207	39.532991928°N	107.684004144°W
7,700.00	0.00	0.00	7,182.70	2,108.81	-504.24	14,367,971.501	883,610.207	39.532991928°N	107.684004144°W
7,800.00	0.00	0.00	7,282.70	2,108.81	-504.24	14,367,971.501	883,610.207	39.532991928°N	107.684004144°W
7,900.00	0.00	0.00	7,382.70	2,108.81	-504.24	14,367,971.501	883,610.207	39.532991928°N	107.684004144°W
8,000.00	0.00	0.00	7,482.70	2,108.81	-504.24	14,367,971.501	883,610.207	39.532991928°N	107.684004144°W
8,100.00	0.00	0.00	7,582.70	2,108.81	-504.24	14,367,971.501	883,610.207	39.532991928°N	107.684004144°W
8,200.00	0.00	0.00	7,682.70	2,108.81	-504.24	14,367,971.501	883,610.207	39.532991928°N	107.684004144°W
8,252.30	0.00	0.00	7,735.00	2,108.81	-504.24	14,367,971.501	883,610.207	39.532991928°N	107.684004144°W
<b>Rollins</b>									
8,300.00	0.00	0.00	7,782.70	2,108.81	-504.24	14,367,971.501	883,610.207	39.532991928°N	107.684004144°W
8,400.00	0.00	0.00	7,882.70	2,108.81	-504.24	14,367,971.501	883,610.207	39.532991928°N	107.684004144°W
8,402.30	0.00	0.00	7,885.00	2,108.81	-504.24	14,367,971.501	883,610.207	39.532991928°N	107.684004144°W
<b>TD at 8402 MD/7885 TVD</b>									

# ARK Directional Services

## Planning Report - Geographic

<b>Database:</b>	EDM SERVER DB	<b>Local Co-ordinate Reference:</b>	Well C06 (111369) - Slot C06
<b>Company:</b>	Antero Resources	<b>TVD Reference:</b>	KB @ 5668.00ft (Original Well Elev)
<b>Project:</b>	Robinson	<b>MD Reference:</b>	KB @ 5668.00ft (Original Well Elev)
<b>Site:</b>	Robinson C Pad	<b>North Reference:</b>	Grid
<b>Well:</b>	C06 (111369)	<b>Survey Calculation Method:</b>	Minimum Curvature
<b>Wellbore:</b>	C06		
<b>Design:</b>	C06 P01		

Design Targets									
Target Name	Dip Angle	Dip Dir.	TVD	+N/-S	+E/-W	Northing	Easting	Latitude	Longitude
- hit/miss target	(°)	(°)	(ft)	(ft)	(ft)	(usft)	(usft)		
- Shape									
C06 BH	0.00	360.00	7,885.00	2,108.81	-504.24	14,367,971.501	883,610.207	39.532991928°N	107.684004144°W
- plan hits target center									
- Circle (radius 25.00)									

Casing Points					
Measured Depth	Vertical Depth	Name		Casing Diameter	Hole Diameter
(ft)	(ft)			(in)	(in)
1,025.00	999.65	Surf Csg at 1025 MD/1000 TVD		5.50	6.00

Formations					
Measured Depth	Vertical Depth	Name	Lithology	Dip	Dip Direction
(ft)	(ft)			(°)	(°)
4,845.66	4,350.00	Mesaverde			
5,627.30	5,110.00	Price Coal			
6,527.30	6,010.00	Top Gas			
7,352.30	6,835.00	Cameo			
8,252.30	7,735.00	Rollins			

Plan Annotations					
Measured Depth	Vertical Depth	Local Coordinates			
(ft)	(ft)	+N/-S	+E/-W	Comment	
(ft)	(ft)	(ft)	(ft)		
200.00	200.00	0.00	0.00	KOP 3°/100 at 200 MD/TVD	
1,000.00	976.81	160.59	-38.41	Hold 24° at 1000 MD/977 TVD	
1,060.00	1,031.62	184.32	-44.08	Build 3°/100 at 1060 MD/1032 TVD	
1,226.74	1,180.80	256.66	-61.38	Hold 29° at 1227 MD/1181 TVD	
4,660.56	4,184.02	1,875.89	-448.55	Drop 3°/100 at 4661 MD/4184 TVD	
5,627.30	5,110.00	2,108.81	-504.24	Vertical at 5627 MD/5110 TVD	
8,402.30	7,885.00	2,108.81	-504.24	TD at 8402 MD/7885 TVD	