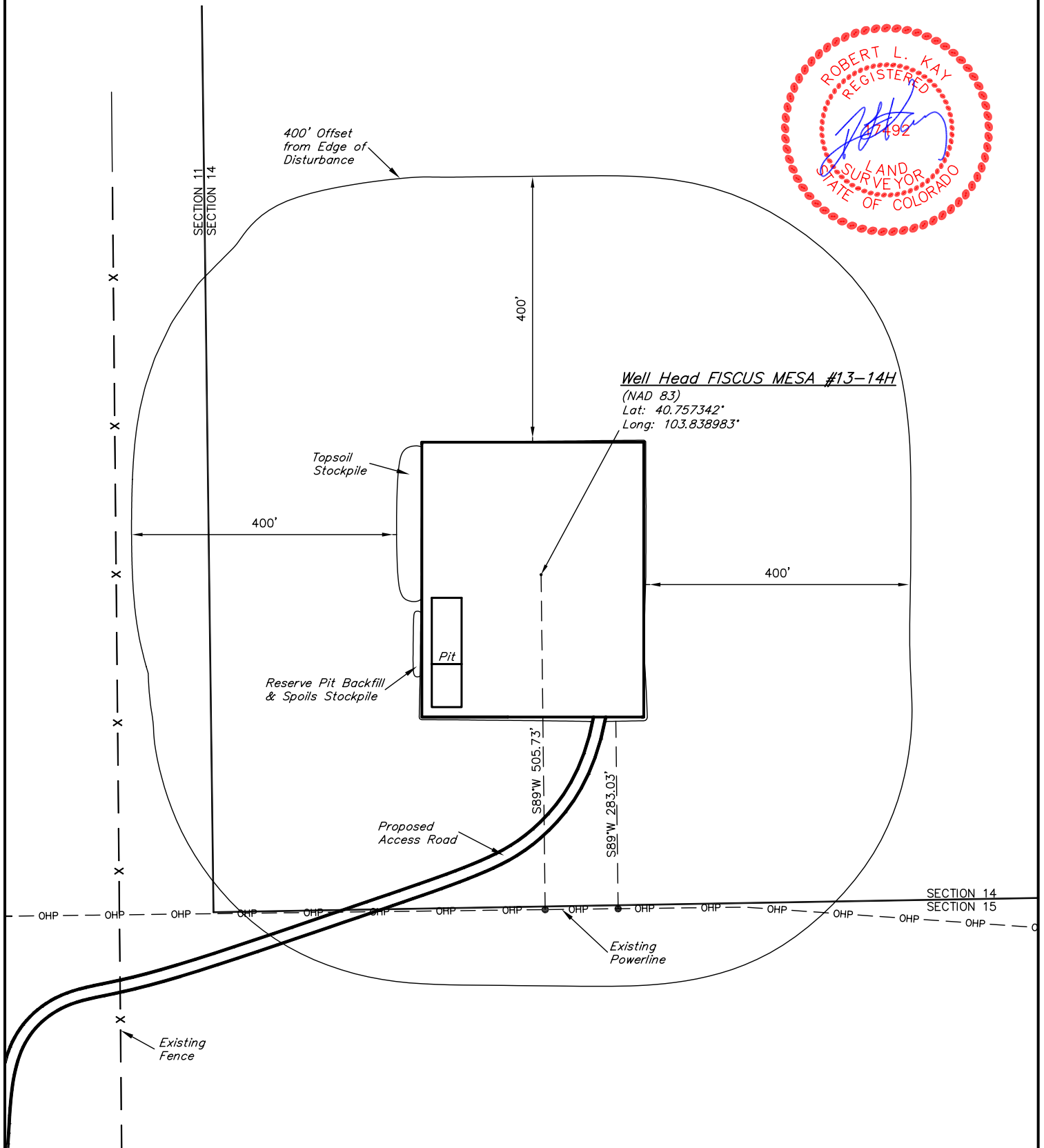


EOG RESOURCES, INC.

ADDENDUM TO LEGAL PLAT FOR

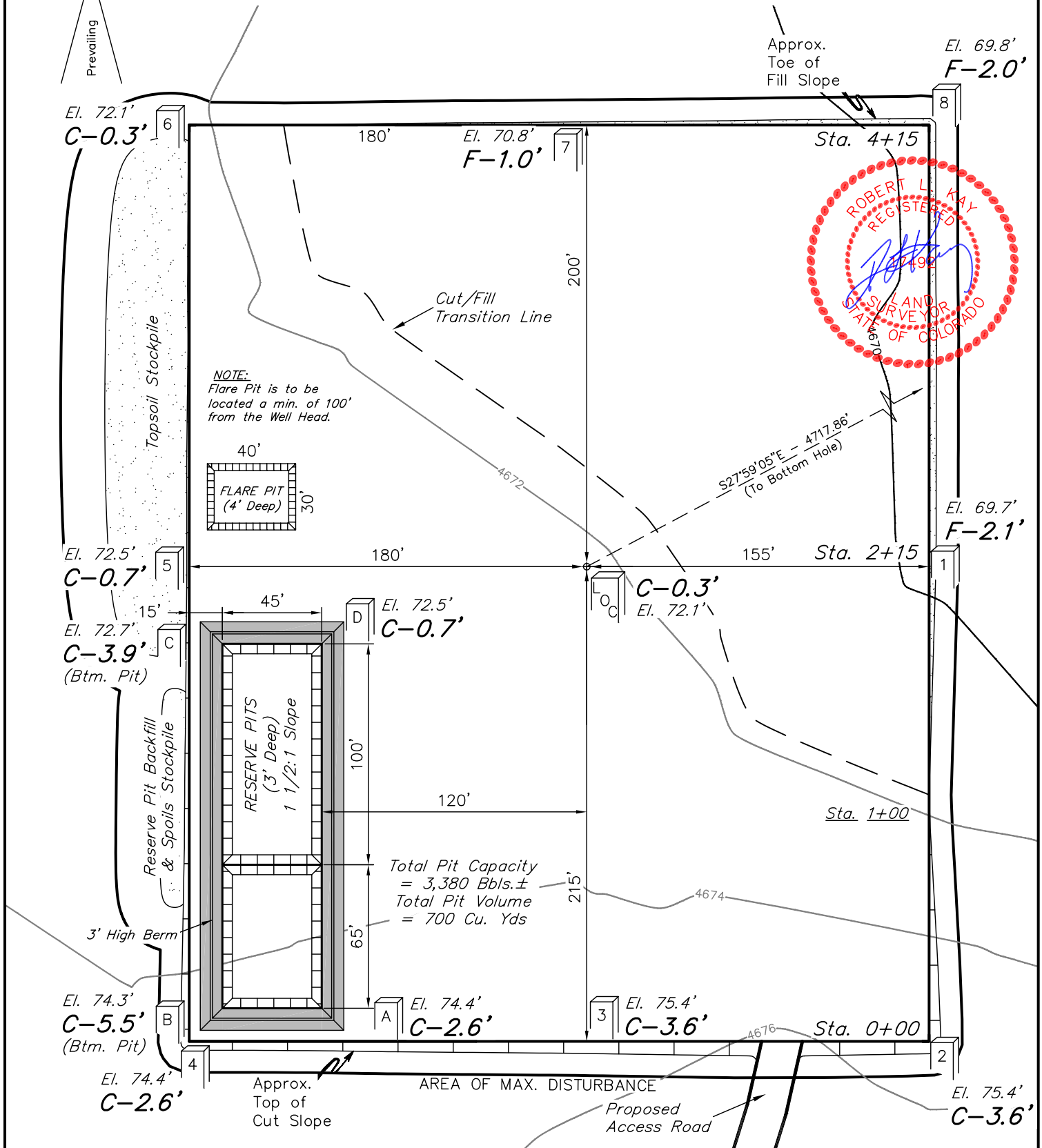
FISCUS MESA #13-14H
SECTION 14, T9N, R58W, 6th. P.M.
501' FNL 501' FWL

SCALE: 1" = 200'
DATE: 11-16-10
DRAWN BY: J.I.
REV.: 03-16-11 J.I.



A diagram of a compass rose with four arrows pointing in the cardinal directions. The North arrow is labeled 'N' and 'Winds'. The South arrow is labeled 'Prevailing'.

SCALE: 1" = 60'
DATE: 11-16-10
DRAWN BY: J.I.
REV.: 03-16-11 J.I.



Elev. Ungraded Ground At Loc. Stake = 4672.1'
FINISHED GRADE ELEV. AT LOC. STAKE = 4671.8'

UINTAH ENGINEERING & LAND SURVEYING
85 So. 200 East * Vernal, Utah 84078 * (435) 789-1017

EOG RESOURCES, INC.

FIGURE #2

CONSTRUCTION LAYOUT CROSS SECTIONS FOR

FISCUS MESA #13-14H

SECTION 14, T9N, R58W, 6th. P.M.

501' FNL 501' FWL

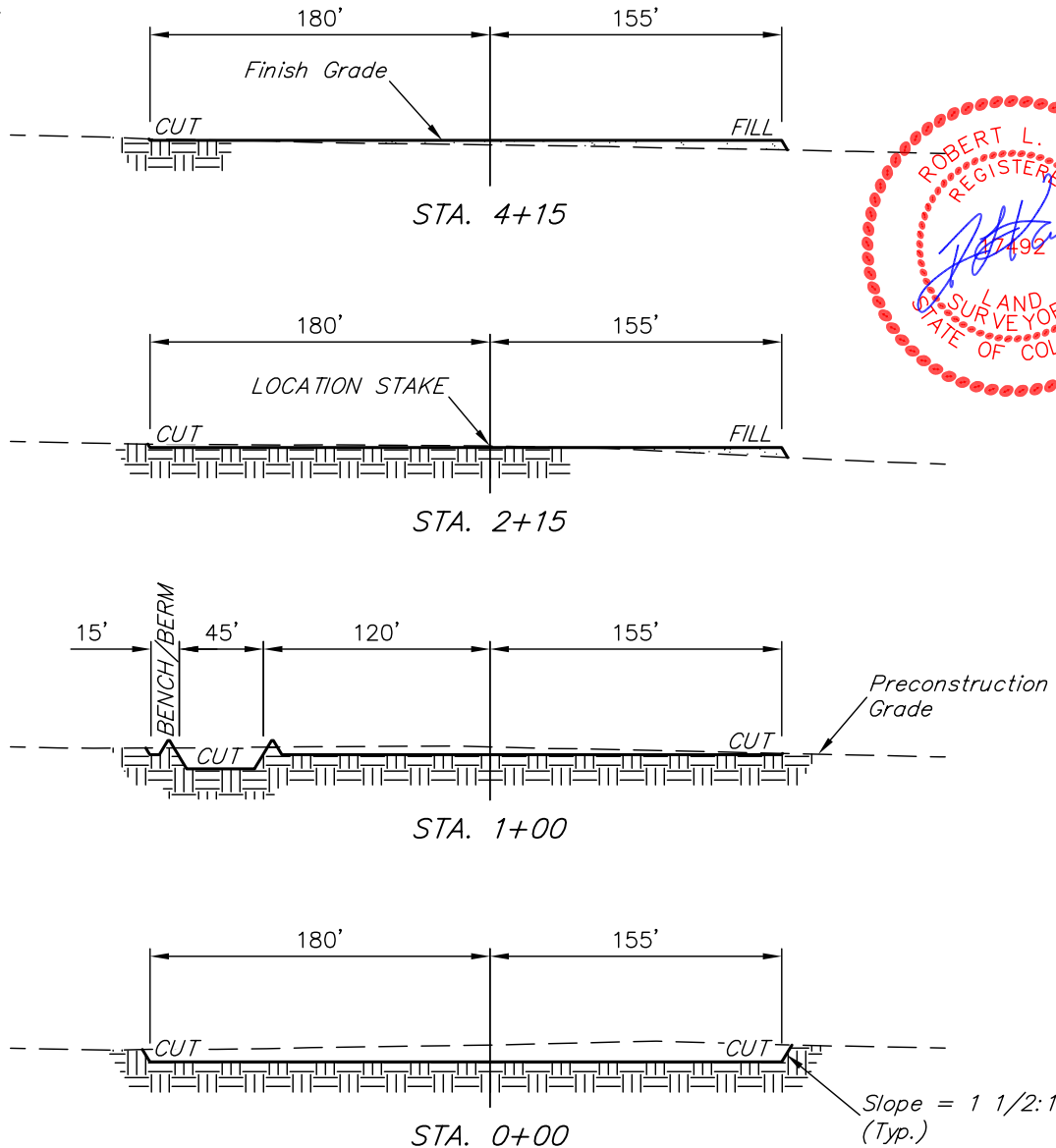
X-Section
Scale
1" = 40'
1" = 100'

DATE: 11-16-10

DRAWN BY: J.I.

REV.: 03-16-11 J.I.

REV.: 04-06-11 J.I.



NOTE:

Topsoil should not be Stripped Below Finished Grade on Substructure Area.

APPROXIMATE ACREAGES

WELL SITE DISTURBANCE = ± 3.960 ACRES
ACCESS ROAD DISTURBANCE = ± 2.266 ACRES
TOTAL = ± 6.226 ACRES

* NOTE:
FILL QUANTITY INCLUDES 5% FOR COMPACTION

APPROXIMATE YARDAGES

(6") Topsoil Stripping = 2,680 Cu. Yds.
Remaining Location = 3,470 Cu. Yds.
TOTAL CUT = 6,150 CU.YDS.
FILL = 3,120 CU.YDS.

EXCESS MATERIAL = 3,030 Cu. Yds.
Topsoil & Pit Backfill = 3,030 Cu. Yds.
(1/2 Pit Vol.)
EXCESS UNBALANCE = 0 Cu. Yds.
(After Interim Rehabilitation)

UINTAH ENGINEERING & LAND SURVEYING
85 So. 200 East * Vernal, Utah 84078 * (435) 789-1017

EOG RESOURCES, INC.

TYPICAL RIG LAYOUT FOR

FISCUS MESA #13-14H
SECTION 14, T9N, R58W, 6th. P.M.
501' FNL 501' FWL

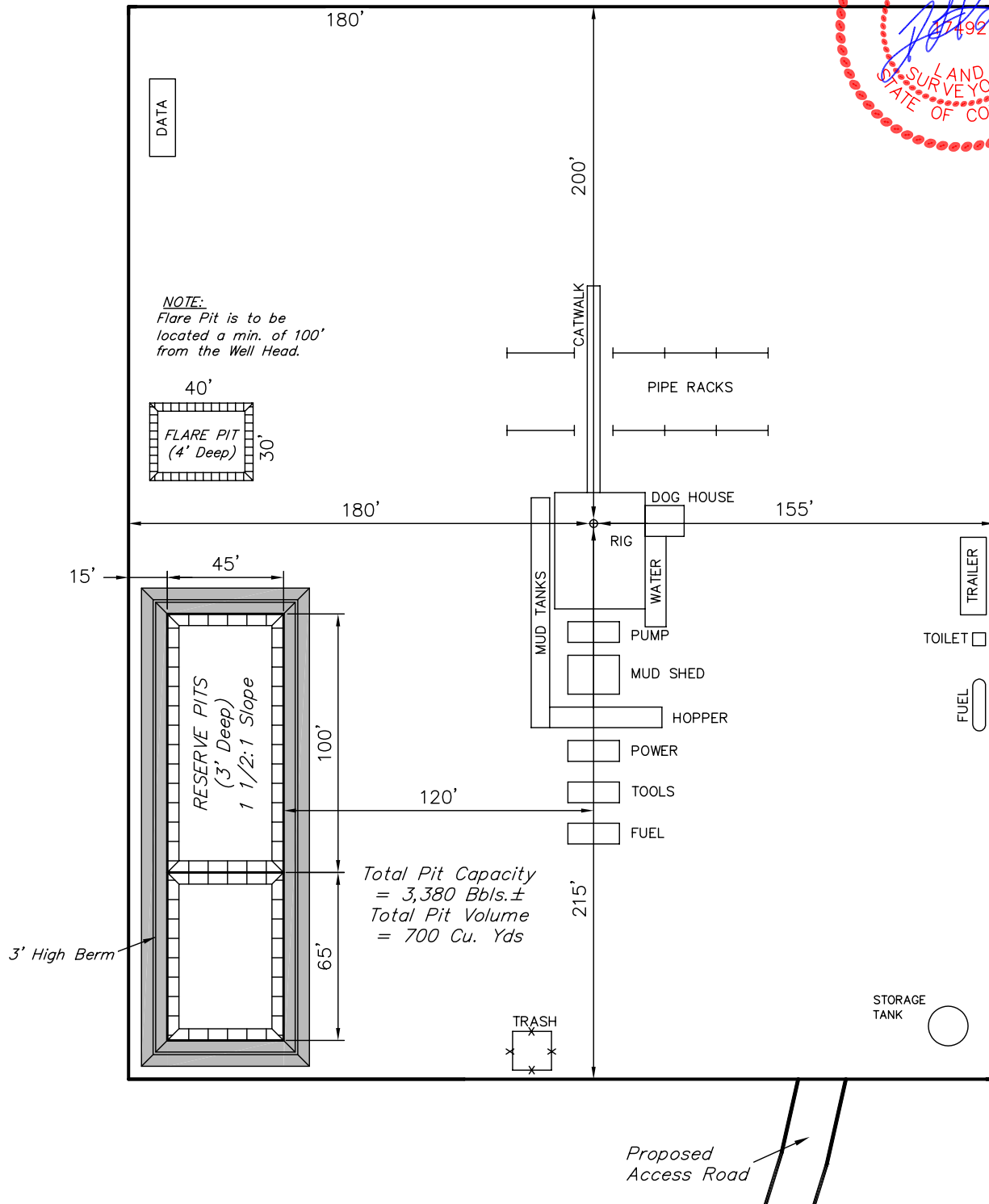
FIGURE #3

SCALE: 1" = 60'

DATE: 11-16-10

DRAWN BY: J.I.

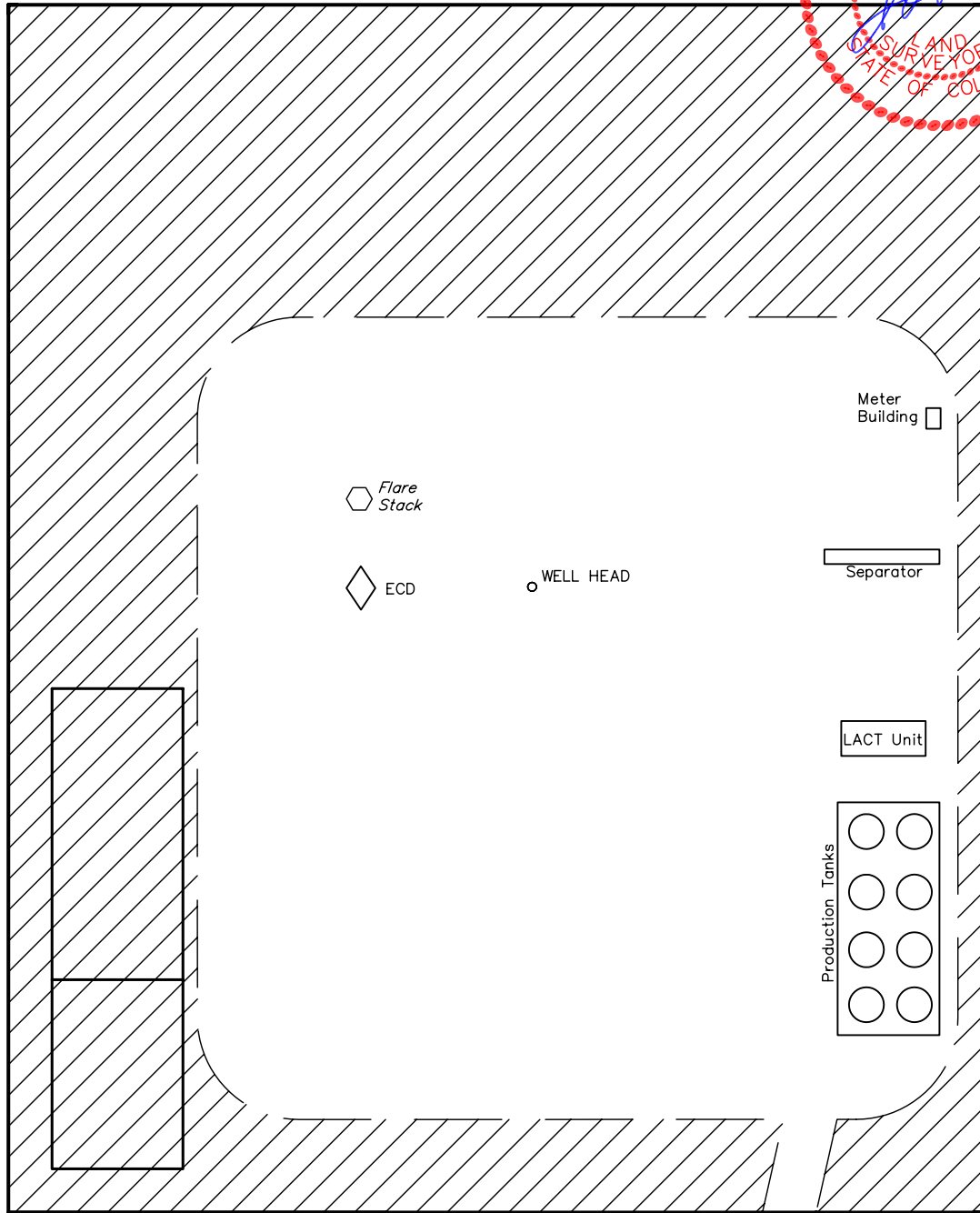
REV.: 03-16-11 J.I.



EOG RESOURCES, INC.
RECLAMATION DIAGRAM FOR
FISCUS MESA #13-14H
SECTION 14, T9N, R58W, 6th. P.M.
501' FNL 501' FWL

FIGURE #4

SCALE: 1" = 60'
DATE: 11-16-10
DRAWN BY: J.I.
REV.: 03-16-11 J.I.



APPROXIMATE ACREAGES
UN-RECLAIMED = ± 1.644 ACRES

Access Road



RECLAIMED AREA

UINTAH ENGINEERING & LAND SURVEYING
85 So. 200 East * Vernal, Utah 84078 * (435) 789-1017

EOG RESOURCES, INC.

LOCATION DRAWING FOR

FISCUS MESA #13-14H
SECTION 14, T9N, R58W, 6th. P.M.
501' FNL 501' FWL

FIGURE #5

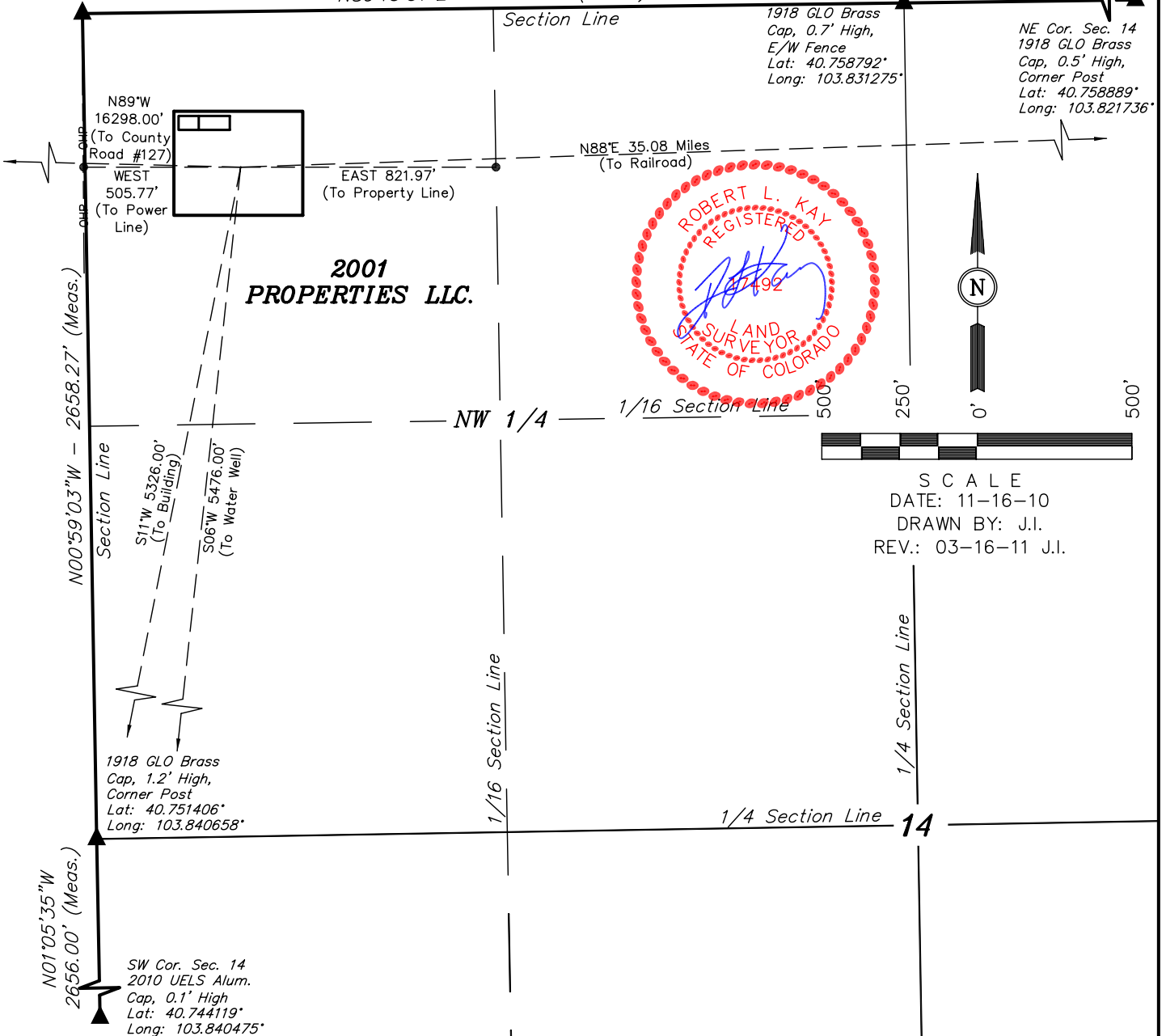
1918 GLO Brass
Cap, 0.9' High
Lat: 40.758700°
Long: 103.840822°

N89°15'51"E - 2645.85' (Meas.)

N89°14'01"E
2643.44' (Meas.)

1918 GLO Brass
Cap, 0.7' High,
E/W Fence
Lat: 40.758792°
Long: 103.831275°

NE Cor. Sec. 14
1918 GLO Brass
Cap, 0.5' High,
Corner Post
Lat: 40.758889°
Long: 103.821736°



PLANT COMMUNITY

- ☐ DISTURBED GRASSLAND
- ☐ NATIVE GRASSLAND
- ☐ SHRUB LAND
- ☐ PLAINS RIPARIAN
- ☐ MOUNTAIN RIPARIAN
- ☐ FOREST LAND
- ☐ WETLANDS AQUATIC
- ☐ ALPINE
- ☐ OTHER (Describe): _____

CURRENT LAND USE

- CROP LAND: ☐ IRRIGATED ☐ DRY LAND ☐ IMPROVED PASTURE ☐ HAY MEADOW ☐ CRP
- NON-CROP LAND: ☐ RANGELAND ☐ TIMBER ☐ RECREATIONAL ☐ OTHER (Describe) _____
- SUBDIVIDED: ☐ INDUSTRIAL ☐ COMMERCIAL ☐ RESIDENTIAL _____

FUTURE LAND USE

- CROP LAND: ☐ IRRIGATED ☐ DRY LAND ☐ IMPROVED PASTURE ☐ HAY MEADOW ☐ CRP
- NON-CROP LAND: ☐ RANGELAND ☐ TIMBER ☐ RECREATIONAL ☐ OTHER (Describe) _____
- SUBDIVIDED: ☐ INDUSTRIAL ☐ COMMERCIAL ☐ RESIDENTIAL _____