

EOG RESOURCES, INC.
FISCUS MESA #13-14H
LOCATED IN WELD COUNTY, COLORADO
SECTION 14, T9N, R58W, 6th P.M.

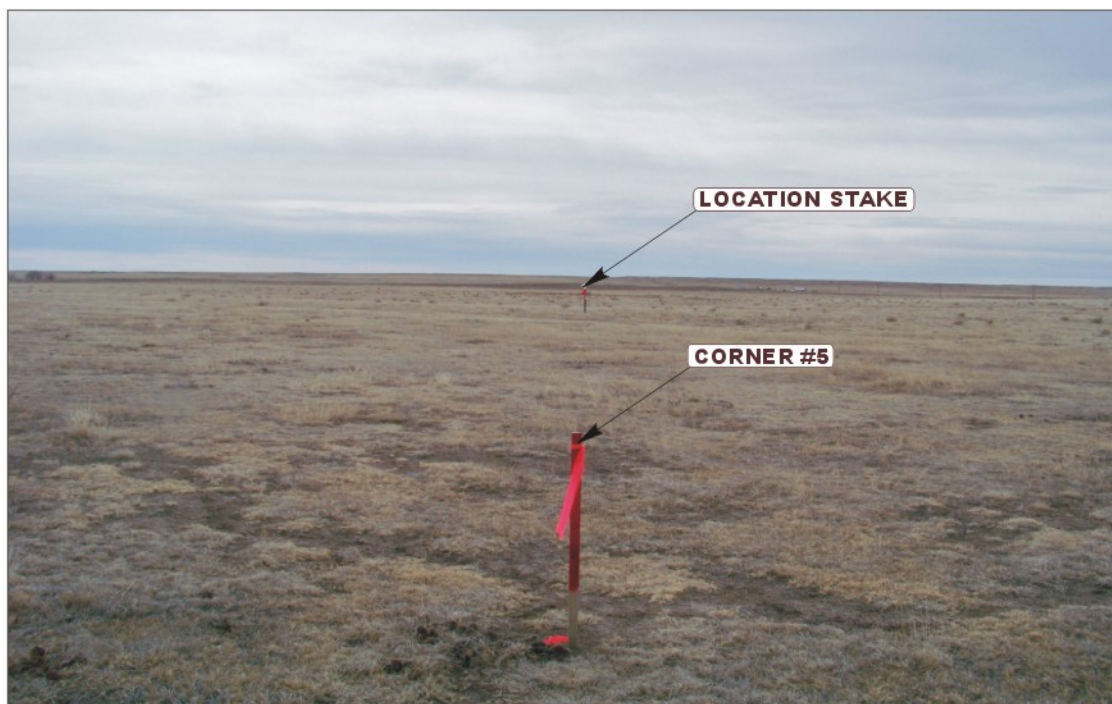


PHOTO: VIEW FROM CORNER #5 LOCATION STAKE

CAMERA ANGLE: SOUTHERLY



PHOTO: VIEW FROM BEGINNING OF PROPOSED ACCESS

CAMERA ANGLE: EASTERLY



UELS Uintah Engineering & Land Surveying
85 South 200 East Vernal, Utah 84078
(435) 789-1017 * FAX (435) 789-1813

LOCATION PHOTOS

11 **08** **10**
MONTH DAY YEAR

PHOTO
P1

TAKEN BY: G.M.

DRAWN BY: Z.L.

REVISED: 04-06-11

EOG RESOURCES, INC.
FISCUS MESA #13-14H
LOCATED IN WELD COUNTY, COLORADO
SECTION 14, T9N, R58W, 6th P.M.



PHOTO: VIEW OF LOCATION STAKE

CAMERA ANGLE: NORTHERLY



PHOTO: VIEW OF LOCATION STAKE

CAMERA ANGLE: EASTERLY



Uintah Engineering & Land Surveying
85 South 200 East Vernal, Utah 84078
(435) 789-1017 * FAX (435) 789-1813

LOCATION PHOTOS

11 **08** **10**
MONTH DAY YEAR

TAKEN BY: G.M.

DRAWN BY: Z.L.

REV: 03-17-11 J.J.

PHOTO
P2

EOG RESOURCES, INC.
FISCUS MESA #13-14H
LOCATED IN WELD COUNTY, COLORADO
SECTION 14, T9N, R58W, 6th P.M.



PHOTO: VIEW OF LOCATION STAKE

CAMERA ANGLE: SOUTHERLY

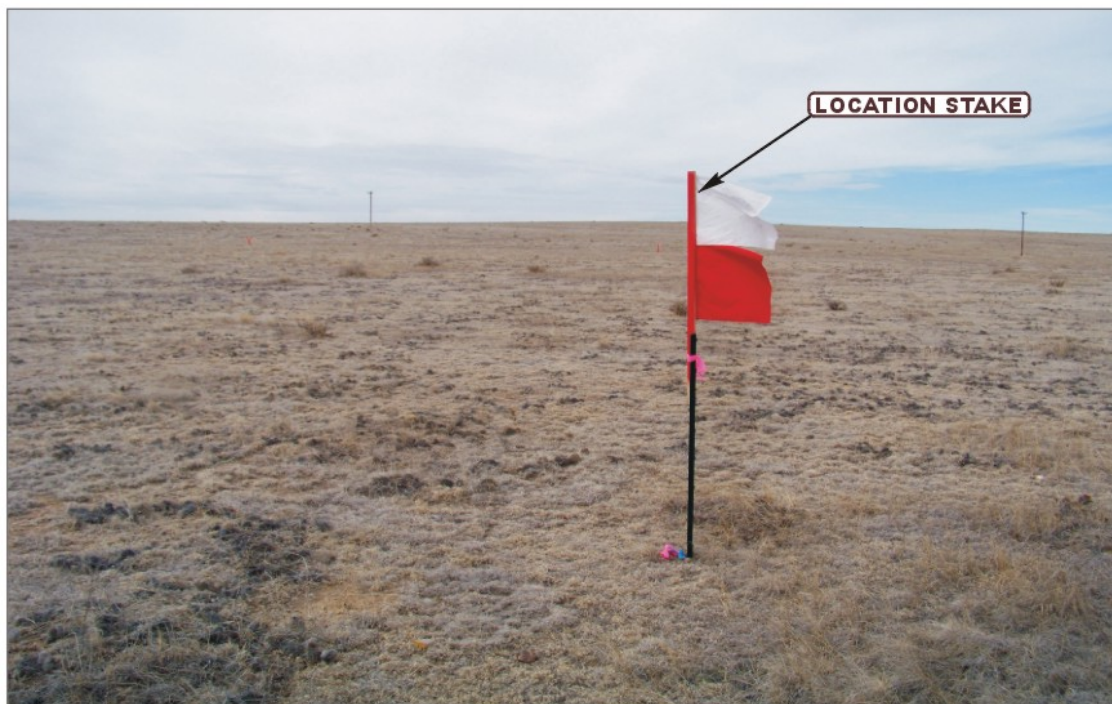


PHOTO: VIEW OF LOCATION STAKE

CAMERA ANGLE: WESTERLY



U
E
L
S Uintah Engineering & Land Surveying
85 South 200 East Vernal, Utah 84078
(435) 789-1017 * FAX (435) 789-1813

LOCATION PHOTOS

11 **08** **10**
MONTH DAY YEAR

TAKEN BY: G.M.

DRAWN BY: Z.L.

REV: 03-17-11 J.J.

PHOTO
P3