

T7S, R96W, 6th P.M.

WILLIAMS PRODUCTION RMT COMPANY

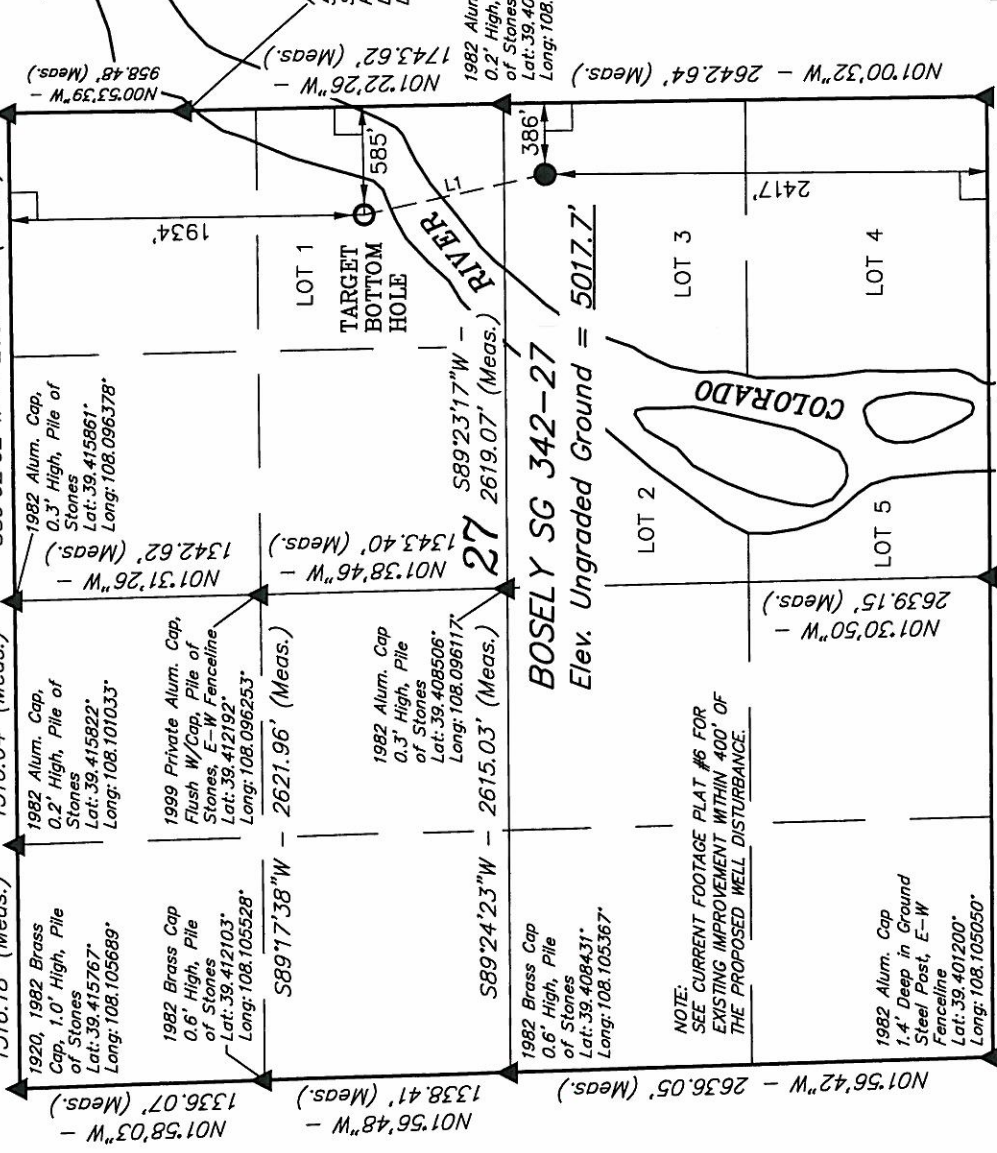
Well location, BOSELY SG 342-27, located as shown in Lot 3 of Section 27, T7S, R96W, 6th P.M., Garfield County, Colorado.

BASIS OF ELEVATION

SPOT ELEVATION AT THE NORTHWEST CORNER OF SECTION 30, T5S, R95W, 6th P.M. TAKEN FROM THE FORKED GULCH QUADRANGLE, COLORADO, GARFIELD COUNTY, 7.5 MINUTE SERIES (TOPOGRAPHICAL MAP) PUBLISHED BY THE UNITED STATES DEPARTMENT OF THE INTERIOR, GEOLOGICAL SURVEY. SAID ELEVATION IS MARKED AS BEING 5966 FEET.

BASIS OF BEARINGS

BASIS OF BEARINGS IS A G.P.S. OBSERVATION.



NOTE: SEE CURRENT FOOTAGE PLAT #6 FOR EXISTING IMPROVEMENT WITHIN 400' OF THE PROPOSED WELL DISTURBANCE.

1982 Alum. Cap, 0.3' High, Pile of Stones
Lat: 39.415822°
Long: 108.101033°
1999 Private Alum. Cap, Flush W/Cap, Pile of Stones, E-W Fenceline
Lat: 39.412192°
Long: 108.096253°
1982 Alum. Cap, 0.3' High, Pile of Stones
Lat: 39.408508°
Long: 108.096117°
1982 Alum. Cap, 0.6' High, Pile of Stones
Lat: 39.408431°
Long: 108.105367°
1982 Alum. Cap, 0.6' High, Pile of Stones
Lat: 39.401200°
Long: 108.105050°
1982 Alum. Cap, 0.1' High, N-S Fenceline
Lat: 39.401328°
Long: 108.086686°
1982 Brass Cap, 0.2' High, E-W Fenceline
Lat: 39.401264°
Long: 108.095869°

LINE TABLE		
LINE	BEARING	LENGTH
L1	N12°38'22"W	1010.97'

LEGEND:

- = 90° SYMBOL
- = PROPOSED WELL HEAD.
- ▲ = SECTION CORNERS LOCATED.

NAD 83 (TARGET BOTTOM HOLE)	
LATITUDE = 39°24'38.38" (39.410661)	NAD 83 (SURFACE LOCATION)
LONGITUDE = 108°05'20.34" (108.088983)	LATITUDE = 39°24'28.63" (39.407953)
STATE PLANE-(COLO. CENTRAL-NAD 83)	LONGITUDE = 108°05'17.53" (108.088203)
N = 1584885.600	STATE PLANE-(COLO. CENTRAL-NAD 83)
E = 2268600.500	N = 1583893.512
	E = 2268793.239

UNTAH ENGINEERING & LAND SURVEYING
85 SOUTH 200 EAST - VERNAL, UTAH 84078
(435) 789-1017

SCALE	DATE SURVEYED:	DATE DRAWN:
1" = 1000'	03-10-10	07-16-10
PARTY	REFERENCES	
B.H. C.K. D.R.B.	G.L.O. PLAT	
WEATHER	FILE	
WARM		WILLIAMS PRODUCTION RMT COMPANY

CERTIFICATE

THIS IS TO CERTIFY THAT THE ABOVE PLAT WAS PREPARED FROM FIELD NOTES OF ACTUAL SURVEYS MADE BY ME OR UNDER MY SUPERVISION AND THAT THE SAME ARE TRUE AND CORRECT TO THE BEST OF MY KNOWLEDGE AND BELIEF.

REGISTERED LAND SURVEYOR
REGISTRATION NO. 17492
STATE OF COLORADO