

Rangely Weber Sand Unit

LARSON F.V. B 26Y Current Wellbore

03/25/11

Well Details:	
STATE & CO	CO - Rio Blanco
TWNS & RNG	T2N & R102W
SECTION	(NWSE) 36
API	05-103-0948500
CHEVNO	KU9594

Casing Details:		P&A: FLARB26Y - CS39	
Type	Depth		
KB	5248		
GL	5228		
16 in. #/ft.	0 - 41', 2 YDS cmt		
8.625 in. 24 #/ft. K-55	0 - 760', 400 sxs cmt		
5.5 in. 17 #/ft. K-55	5208 - 5958', 1180 sxs cmt		
in. #/ft.	-', sxs cmt		
in. #/ft.	-', sxs cmt		
Open Hole Top	5958		
Open Hole Btm	6544		
PBTD:	6544		
TD:	6544		

Formation	Depth
Niobrara	
Frontier	3080
Frontier Snd	
Mowry	3355
Dakota	3454
Morrison	3545
Curtis	4170
Entrada	4273
Carmel	4462
Navajo	4488
Chinle	5122
Shinarump	5306
Moenkopi	5352
Weber	6002

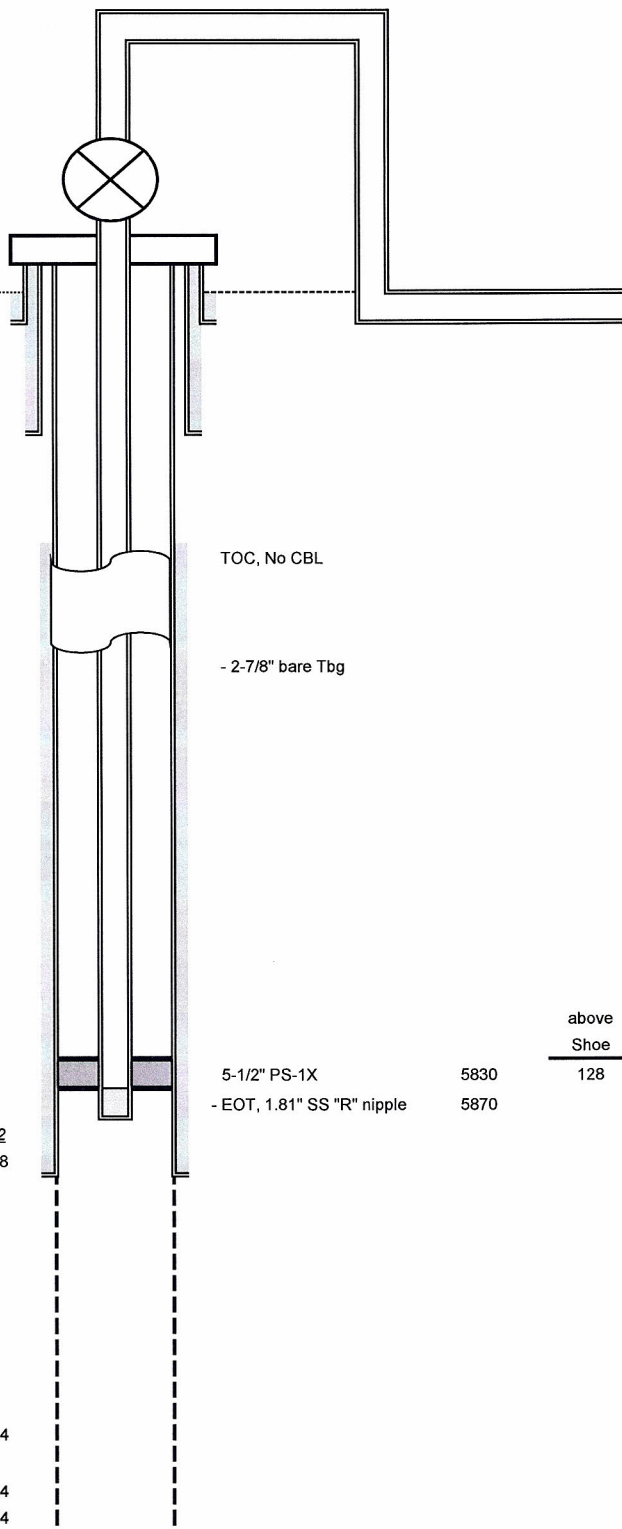
COGCC Regulations: Set Isolation Packer
within 300' of perfs or 100' above liner

GOC_CALC	5578		
		FT	PAY
Weber 1a	6002	172	0
Weber 2	6174		
Weber 3a	6186	89	0
Weber 4	6275		
Weber 5a	6311	105	0
Weber 6	6416		
Weber 7a	6436	108	0
Weber 8			
Weber 9a			0
Weber 10			
Weber 11a		0	0
		474	0
OWC_CALC	6398		

Weber 6002
Open Hole 1 5958

Open Hole E 6544

PBTD: 6544
TD: 6544



above
Shoe
128

5-1/2" PS-1X 5830
- EOT, 1.81" SS "R" nipple 5870

Notes:

- 09/08: TA'd w/ PKR & PLS set 1.81 plug in profile
- 11/90: Set 5-1/2" csg at 5958', pump 380 sxs H + 430 sxs Light cement w/ 30 bbls returns.
- 11/90: 8-5/8" csg at 760 w/400 sxs H cement w/ 2% CaCl₂, 20 bbls returned to the pit.