
BILL BARRETT CORPORATION E-BILL

**CB-TG LAND 22D-20-692
MAMM CREEK
Garfield County , Colorado**

Cement Surface Casing
07-Apr-2011

Post Job Report

The Road to Excellence Starts with Safety

Sold To #: 343492	Ship To #: UNKNOWN	Quote #:	Sales Order #: 8089079
Customer: BILL BARRETT CORPORATION E-BILL	Customer Rep: South, Jodi		
Well Name: CB-TG LAND	Well #: 22D-20-692	API/UWI #:	
Field: MAMM CREEK	City (SAP): SILT	County/Parish: Garfield	State: Colorado
Contractor: Pro Petro	Rig/Platform Name/Num: Pro Petro		
Job Purpose: Cement Surface Casing			
Well Type: Development Well	Job Type: Cement Surface Casing		
Sales Person: METLI, MARSHALL	Srv Supervisor: CALDWELL, JEFFREY	MBU ID Emp #: 369111	

Job Personnel

HES Emp Name	Exp Hrs	Emp #	HES Emp Name	Exp Hrs	Emp #	HES Emp Name	Exp Hrs	Emp #
CALDWELL, JEFFREY S	3	369111	SLAUGHTER, JESSE Dean	3	454315	YOUNG, JEREMY R	3	418013

Equipment

HES Unit #	Distance-1 way	HES Unit #	Distance-1 way	HES Unit #	Distance-1 way	HES Unit #	Distance-1 way
10867425	120 mile	10897891	120 mile	10951249	120 mile	11560046	120 mile
11562538	120 mile						

Job Hours

Date	On Location Hours	Operating Hours	Date	On Location Hours	Operating Hours	Date	On Location Hours	Operating Hours
04-07-11	3	1						

TOTAL Total is the sum of each column separately

Job

Formation Name													Date	Time	Time Zone	
Formation Depth (MD)		Top			Bottom				Called Out	06 - Apr - 2011		20:00		MST		
Form Type					BHST					On Location	07 - Apr - 2011		01:00		MST	
Job depth MD		796.8 ft			Job Depth TVD		796.8 ft			Job Started	07 - Apr - 2011		01:34		MST	
Water Depth					Wk Ht Above Floor		4. ft			Job Completed	07 - Apr - 2011		02:27		MST	
Perforation Depth (MD)		From			To				Departed Loc	07 - Apr - 2011		04:00		MST		

Well Data

Description	New / Used	Max pressure psig	Size in	ID in	Weight lbm/ft	Thread	Grade	Top MD ft	Bottom MD ft	Top TVD ft	Bottom TVD ft
-------------	------------	-------------------	---------	-------	---------------	--------	-------	-----------	--------------	------------	---------------

Sales/Rental/3rd Party (HES)

Description	Qty	Qty uom	Depth	Supplier
PLUG,CMTG,TOP,9 5/8,HWE,8.16 MIN/9.06 MA	1	EA		

Tools and Accessories

Type	Size	Qty	Make	Depth	Type	Size	Qty	Make	Depth	Type	Size	Qty	Make
Guide Shoe					Packer					Top Plug	9.625	1	
Float Shoe					Bridge Plug					Bottom Plug			
Float Collar					Retainer					SSR plug set			
Insert Float										Plug Container	9.625	1	
Stage Tool										Centralizers			

Miscellaneous Materials

Gelling Agt	Conc	Surfactant	Conc	Acid Type	Qty	Conc	%
Treatment Fld	Conc	Inhibitor	Conc	Sand Type	Size	Qty	

Fluid Data										
Stage/Plug #: 1										
Fluid #	Stage Type	Fluid Name	Qty	Qty uom	Mixing Density lbm/gal	Yield ft ³ /sk	Mix Fluid Gal/sk	Rate bbl/min	Total Mix Fluid Gal/sk	
1	Water Spacer		20	bbl	.	.0	.0	2.0		
2	VersaCem Lead Cement	VERSACEM (TM) SYSTEM (452010)	120	sacks	12.3	2.38	13.75	5	13.75	
	13.75 Gal	FRESH WATER								
3	SwiftCem Tail Cement	SWIFTCEM (TM) SYSTEM (452990)	120	sacks	14.2	1.43	6.85	5	6.85	
	6.85 Gal	FRESH WATER								
4	Displacement		58	bbl	.	.0	.0	5.0		
Calculated Values		Pressures		Volumes						
Displacement	58	Shut In: Instant		Lost Returns		Cement Slurry	81.5	Pad		
Top Of Cement	SURFACE	5 Min		Cement Returns	23	Actual Displacement	58	Treatment		
Frac Gradient		15 Min		Spacers	20	Load and Breakdown		Total Job	160	
Rates										
Circulating		Mixing	5	Displacement	5	Avg. Job	5			
Cement Left In Pipe	Amount	46.95 ft	Reason	Shoe Joint						
Frac Ring # 1 @	ID	Frac ring # 2 @	ID	Frac Ring # 3 @	ID	Frac Ring # 4 @	ID			
The Information Stated Herein Is Correct				Customer Representative Signature						

The Road to Excellence Starts with Safety

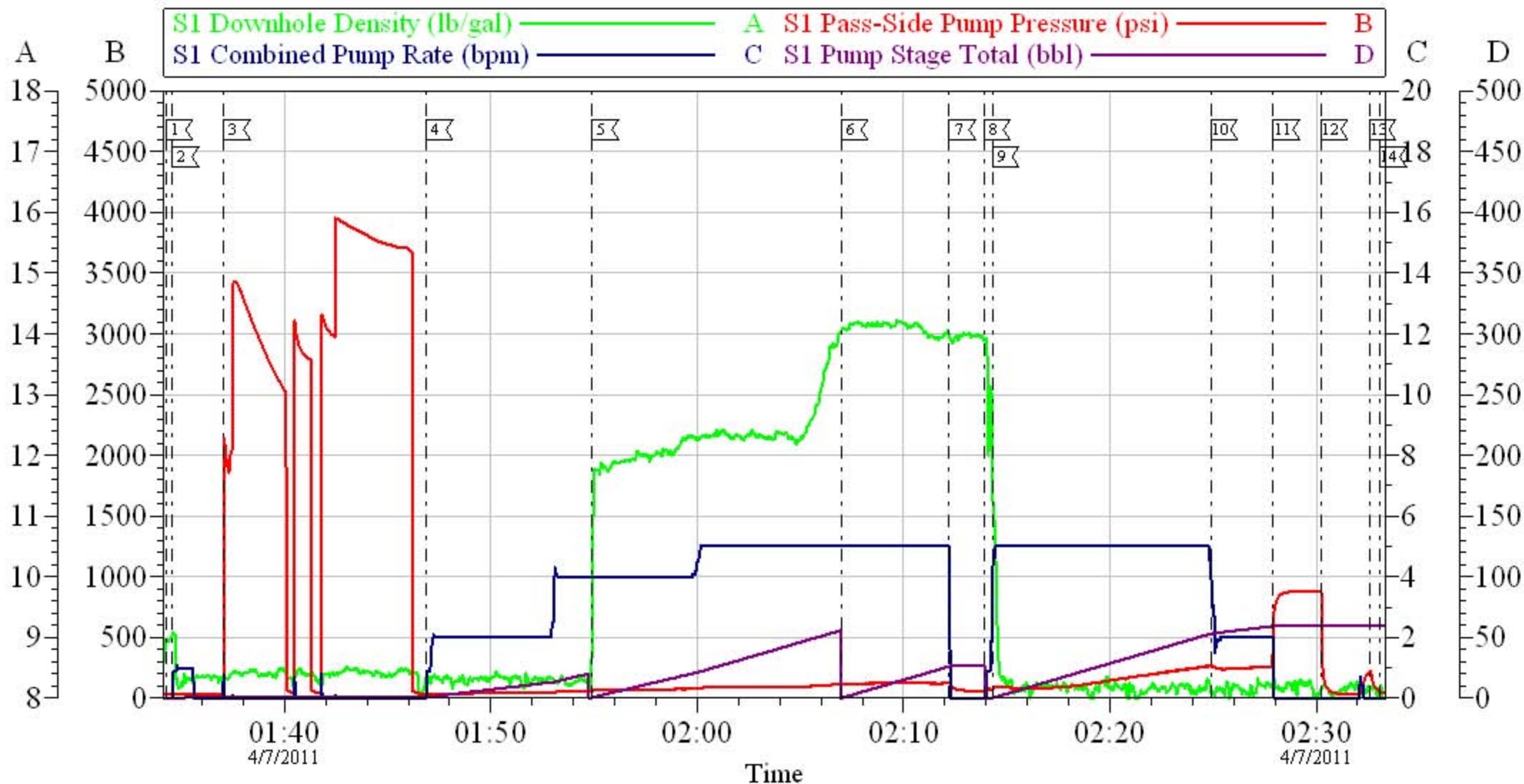
Sold To #: 343492		Ship To #: UNKNOWN		Quote #:		Sales Order #: 8089079	
Customer: BILL BARRETT CORPORATION E-BILL				Customer Rep: South, Jodi			
Well Name: CB-TG LAND			Well #: 22D-20-692			API/UWI #:	
Field: MAMM CREEK		City (SAP): SILT		County/Parish: Garfield			State: Colorado
Legal Description:							
Lat:				Long:			
Contractor: Pro Petro				Rig/Platform Name/Num: Pro Petro			
Job Purpose: Cement Surface Casing						Ticket Amount:	
Well Type: Development Well				Job Type: Cement Surface Casing			
Sales Person: METLI, MARSHALL				Srvc Supervisor: CALDWELL, JEFFREY		MBU ID Emp #: 369111	

Activity Description	Date/Time	Cht #	Rate bbl/min	Volume bbl		Pressure psig		Comments
				Stage	Total	Tubing	Casing	
Call Out	04/06/2011 20:00							ELITE #5
Pre-Convoy Safety Meeting	04/06/2011 22:00							ALL PERSONNEL ASSOCIATED WITH JOB ATTENDED.
Crew Leave Yard	04/06/2011 22:30							
Arrive At Loc	04/07/2011 01:00							RIG CREW WAS IN THE MIDDLE OF MOVING RIG.
Safety Meeting	04/07/2011 01:03							ALL PERSONNEL ASSOCIATED WITH JOB ATTENDED.
Rig-Up Equipment	04/07/2011 01:10							
Pre-Job Safety Meeting	04/07/2011 01:25							ALL PERSONNEL ASSOCIATED WITH JOB ATTENDED.
Start Job	04/07/2011 01:34							TP:796.75 SJ:46.95 12 1/4" OH.
Prime Pumps	04/07/2011 01:34		1	1			32.0	H2O
Test Lines	04/07/2011 01:37					3800.0		WE HAD PROBLEMS HOLDING PRESSURE ON DRIVER SIDE. ONCE WE ISOLATED IT AND USED PASSENGERS SIDE TEST WENT GOOD.
Pump Spacer	04/07/2011 01:46		4	20			61.0	H2O
Pump Lead Cement	04/07/2011 01:54		5	50.9			61.0	120 SKS 12.3 PPG 2.38 CUFT/SAK 13.75 GAL/SAK

Activity Description	Date/Time	Cht #	Rate bbl/min	Volume bbl		Pressure psig		Comments
				Stage	Total	Tubing	Casing	
Pump Tail Cement	04/07/2011 02:06		5	30.6			126.0	120 SKS 14.2 PPG 1.43 CUFT/SAK 6.85 GAL/SAK
Shutdown	04/07/2011 02:12							
Drop Top Plug	04/07/2011 02:13							PLUG AWAY.
Pump Displacement	04/07/2011 02:14		5	58			260.0	H2O
Slow Rate	04/07/2011 02:24		2	50			240.0	
Bump Plug	04/07/2011 02:27		2	58			820.0	PLUG BUMPED.
Check Floats	04/07/2011 02:30							FLOATS HELD 1/4 BBL BACK. ESTABLISHED CIRCULATION 3 BBLS INTO TAIL CEMENT.
Other	04/07/2011 02:32							SHUT IN 200 PSI IN WELL.
End Job	04/07/2011 02:33							23 BBLS OF CEMENT BACK TO SURFACE.
Post-Job Safety Meeting (Pre Rig-Down)	04/07/2011 02:35							ALL PERSONNEL ASSOCIATED WITH JOB ATTENDED.
Rig-Down Equipment	04/07/2011 02:40							
Crew Leave Location	04/07/2011 04:00							THANK YOU FOR CHOOSING HALLIBURTON,JEFF CALDWELL AND CREW.

BILL BARRETT

CB-TG Land 22D-20-692 Surface



Customer: Bill Barrett
 Well Description: CB-TG Land 22D-20-692
 Company Rep: Jodi South

Job Date: 07-Apr-2011
 Job Type: Surface
 Cement Supervisor: Jeff Caldwell

Sales Order #: 8089709
 ADC Used: Yes
 Elite #: 5/Jesse Slaughter

OptiCern v6.4.2
 07-Apr-11 03:09