
BILL BARRETT CORPORATION E-BILL

**CB-TG LAND 12D-20-692
MAMM CREEK
Garfield County , Colorado**

Cement Surface Casing
08-Apr-2011

Post Job Summary

The Road to Excellence Starts with Safety

Sold To #: 343492	Ship To #: 2847531	Quote #:	Sales Order #: 8088939
Customer: BILL BARRETT CORPORATION E-BILL	Customer Rep: South, Jody		
Well Name: CB-TG LAND	Well #: 12D-20-692	API/UWI #: 05-045-19754	
Field: MAMM CREEK	City (SAP): SILT	County/Parish: Garfield	State: Colorado
Lat: N 39.518 deg. OR N 39 deg. 31 min. 3.022 secs.	Long: W 107.69 deg. OR W -108 deg. 18 min. 35.366 secs.		
Contractor: Pro Petro	Rig/Platform Name/Num: Pro Petro		
Job Purpose: Cement Surface Casing			
Well Type: Development Well	Job Type: Cement Surface Casing		
Sales Person: METLI, MARSHALL	Srvs Supervisor: CALDWELL, JEFFREY	MBU ID Emp #: 369111	

Job Personnel

HES Emp Name	Exp Hrs	Emp #	HES Emp Name	Exp Hrs	Emp #	HES Emp Name	Exp Hrs	Emp #
CALDWELL, JEFFREY S	4	369111	SLAUGHTER, JESSE Dean	4	454315	YOUNG, JEREMY R	4	418013

Equipment

HES Unit #	Distance-1 way	HES Unit #	Distance-1 way	HES Unit #	Distance-1 way	HES Unit #	Distance-1 way
10783493	120 mile	10822007	120 mile	10951249	120 mile	11560046	120 mile
11562538	120 mile						

Job Hours

Date	On Location Hours	Operating Hours	Date	On Location Hours	Operating Hours	Date	On Location Hours	Operating Hours
04-08-11	4	1						
TOTAL	Total is the sum of each column separately							

Job

Formation Name	Job	Job Times	Date	Time	Time Zone
Formation Depth (MD)	Top Bottom	Called Out	07 - Apr - 2011	20:00	MST
Form Type	BHST	On Location	08 - Apr - 2011	01:00	MST
Job depth MD	837.9 ft	Job Depth TVD	837.9 ft	Job Started	08 - Apr - 2011
Water Depth		Wk Ht Above Floor	4. ft	Job Completed	08 - Apr - 2011
Perforation Depth (MD)	From To	Departed Loc	08 - Apr - 2011	05:00	MST

Well Data

Description	New / Used	Max pressure psig	Size in	ID in	Weight lbm/ft	Thread	Grade	Top MD ft	Bottom MD ft	Top TVD ft	Bottom TVD ft
-------------	------------	-------------------	---------	-------	---------------	--------	-------	-----------	--------------	------------	---------------

Sales/Rental/3rd Party (HES)

Description	Qty	Qty uom	Depth	Supplier
PLUG,CMTG,TOP,9 5/8,HWE,8.16 MIN/9.06 MA	1	EA		

Tools and Accessories

Type	Size	Qty	Make	Depth	Type	Size	Qty	Make	Depth	Type	Size	Qty	Make
Guide Shoe					Packer					Top Plug	9.625	1	
Float Shoe					Bridge Plug					Bottom Plug			
Float Collar					Retainer					SSR plug set			
Insert Float										Plug Container	9.625	1	
Stage Tool										Centralizers			

Miscellaneous Materials

Gelling Agt	Conc	Surfactant	Conc	Acid Type	Qty	Conc	%
Treatment Fld	Conc	Inhibitor	Conc	Sand Type	Size	Qty	

Fluid Data										
Stage/Plug #: 1										
Fluid #	Stage Type	Fluid Name	Qty	Qty uom	Mixing Density lbm/gal	Yield ft ³ /sk	Mix Fluid Gal/sk	Rate bbl/min	Total Mix Fluid Gal/sk	
1	Water Spacer		20	bbl	.	.0	.0	4.0		
2	VersaCem Lead Cement	VERSACEM (TM) SYSTEM (452010)	120	sacks	12.3	2.38	13.75	5.0	13.75	
	13.75 Gal	FRESH WATER								
3	SwiftCem Tail Cement	SWIFTCES (TM) SYSTEM (452990)	120	sacks	14.2	1.43	6.85	5.0	6.85	
	6.85 Gal	FRESH WATER								
4	Displacement		61.1	bbl	.	.0	.0	5.0		
Calculated Values		Pressures		Volumes						
Displacement	61.1	Shut In: Instant		Lost Returns		Cement Slurry	81.5	Pad		
Top Of Cement	SURFACE	5 Min		Cement Returns	25	Actual Displacement	61.1	Treatment		
Frac Gradient		15 Min		Spacers	20	Load and Breakdown		Total Job	160	
Rates										
Circulating		Mixing	5	Displacement	5	Avg. Job	5			
Cement Left In Pipe	Amount	46.95 ft	Reason	Shoe Joint						
Frac Ring # 1 @	ID	Frac ring # 2 @	ID	Frac Ring # 3 @	ID	Frac Ring # 4 @	ID			
The Information Stated Herein Is Correct				Customer Representative Signature						

The Road to Excellence Starts with Safety

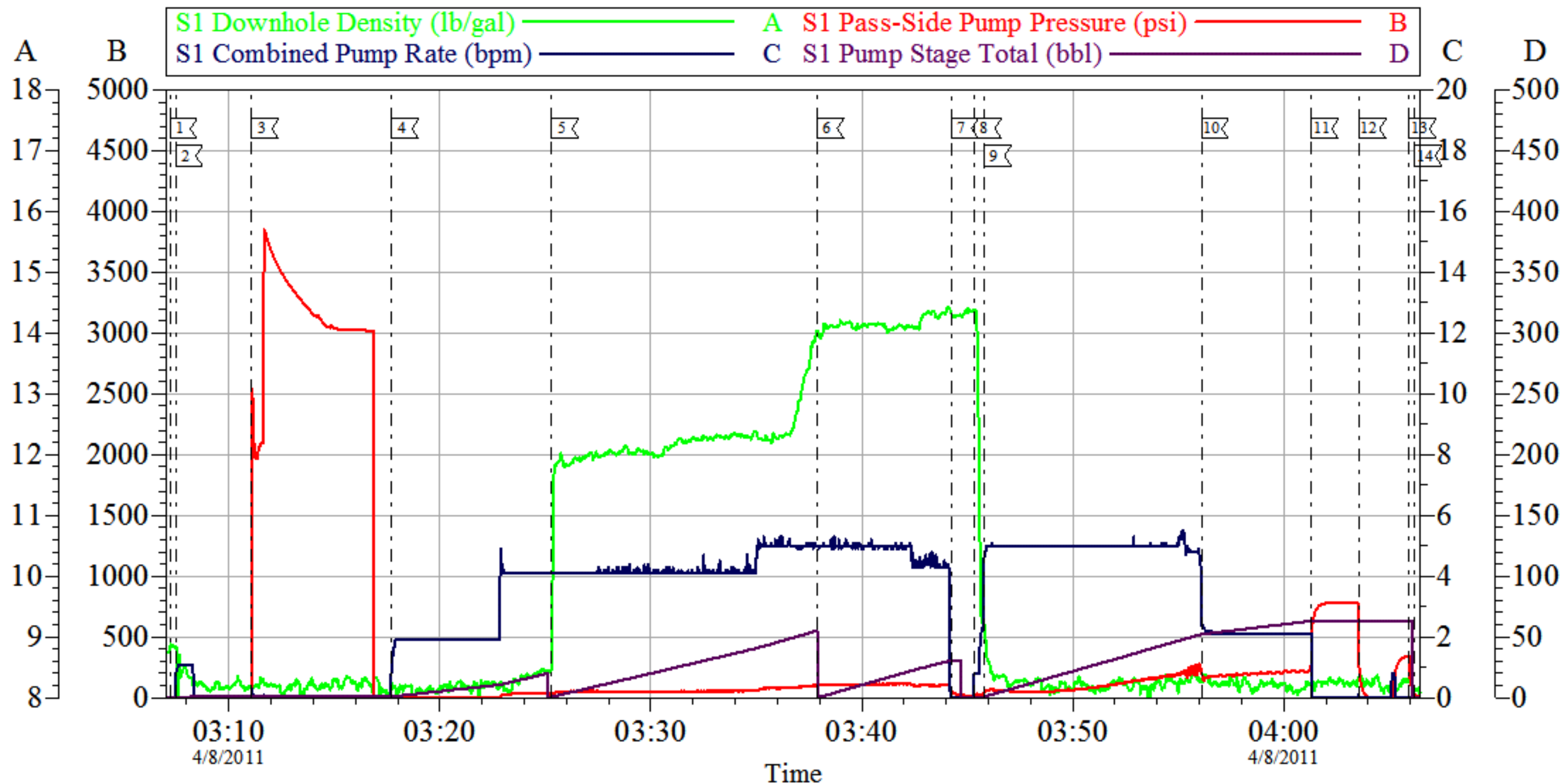
Sold To #: 343492		Ship To #: 2847531		Quote #:		Sales Order #: 8088939	
Customer: BILL BARRETT CORPORATION E-BILL				Customer Rep: South, Jody			
Well Name: CB-TG LAND			Well #: 12D-20-692		API/UWI #: 05-045-19754		
Field: MAMM CREEK		City (SAP): SILT		County/Parish: Garfield		State: Colorado	
Legal Description:							
Lat: N 39.518 deg. OR N 39 deg. 31 min. 3.022 secs.				Long: W 107.69 deg. OR W -108 deg. 18 min. 35.366 secs.			
Contractor: Pro Petro			Rig/Platform Name/Num: Pro Petro				
Job Purpose: Cement Surface Casing						Ticket Amount:	
Well Type: Development Well			Job Type: Cement Surface Casing				
Sales Person: METLI, MARSHALL			Srv Supervisor: CALDWELL, JEFFREY				
			MBU ID Emp #: 369111				

Activity Description	Date/Time	Cht #	Rate bbl/min	Volume bbl		Pressure psig		Comments
				Stage	Total	Tubing	Casing	
Call Out	04/07/2011 20:00							ELITE #5
Pre-Convoy Safety Meeting	04/07/2011 21:35							ALL PERSONNEL ASSOCIATED WITH JOB ATTENDED.
Crew Leave Yard	04/07/2011 22:00							
Arrive At Loc	04/08/2011 01:00							CASING WAS STILL BEING RUN.
Safety Meeting	04/08/2011 01:05							ALL PERSONNEL ASSOCIATED WITH JOB ATTENDED.
Rig-Up Equipment	04/08/2011 01:15							
Pre-Job Safety Meeting	04/08/2011 02:40							ALL PERSONNEL ASSOCIATED WITH JOB ATTENDED.
Start Job	04/08/2011 03:07							TP:837.85', SJ:46.95', 12 1/4" OH
Prime Pumps	04/08/2011 03:07		1	1			.0	H2O
Test Lines	04/08/2011 03:11					2500.0		RELEASE WAS OPEN A LITTLE BIT, PSI BLED OFF. ONCE RELEASE WAS SHUT TEST GOOD.
Pump Spacer	04/08/2011 03:17		4	20			32.0	H2O
Pump Lead Cement	04/08/2011 03:25		5	30.6			32.0	120 SKS 12.3 PPG 2.38 CUFT/SAK 13.75 GAL/SAK

Activity Description	Date/Time	Cht #	Rate bbl/min	Volume bbl		Pressure psig		Comments
				Stage	Total	Tubing	Casing	
Pump Tail Cement	04/08/2011 03:37		5	50.9			103.0	120 SKS 14.2 PPG 1.43 CUFT/SAK 6.85 GAL/SAK. ESTABLISHED RETURNS 29 BBLS INTO TAIL CEMENT.
Shutdown	04/08/2011 03:44							
Drop Top Plug	04/08/2011 03:45							PLUG AWAY
Pump Displacement	04/08/2011 03:45		5	61.1			215.0	H2O
Slow Rate	04/08/2011 03:56		2	51			170.0	
Bump Plug	04/08/2011 04:01		2	61.1			779.0	PLUG BUMPED.
Check Floats	04/08/2011 04:03							FLOATS HELD 1/4 BBL BACK.
Other	04/08/2011 04:05							SHUT IN 350 PSI ON WELL.
End Job	04/08/2011 04:06							25 BBLS OF CEMENT TO SURFACE.
Post-Job Safety Meeting (Pre Rig-Down)	04/08/2011 04:06							ALL PERSONNEL ASSOCIATED WITH JOB ATTENDED.
Rig-Down Equipment	04/08/2011 04:10							
Crew Leave Location	04/08/2011 05:00							THANK YOU FOR CHOOSING HALLIBURTON, JEFF CALDWELL AND CREW.

BILL BARRETT

CB-TG Land 12 D-20-692 Surface



Local Event Log					
1	Start Job	03:07:12	2	Prime Lines	03:07:28
3	Test Lines	03:11:05	4	Pump H2O Spacer	03:17:43
5	Pump Lead Cement	03:25:18	6	Pump Tail Cement	03:37:52
7	Shut Down	03:44:15	8	Drop Top Plug	03:45:20
9	Pump Displacement	03:45:48	10	Slow Rate	03:56:06
11	Bump Plug	04:01:18	12	Check Floats	04:03:34
13	Shut In Well	04:05:57	14	End Job	04:06:12

Customer: Bill Barrett
 Well Description: CB-TG Land 12D-20-692
 Company Rep: Josh Henderson

Job Date: 08-Apr-2011
 Job Type: Surface
 Cement Supervisor: Jeff Caldwell

Sales Order #: 8088939
 ADC Used: Yes
 Elite #: 5/Jesse Slaughter

OptiCem v6.4.2
 08-Apr-11 04:16