

---

# **BILL BARRETT CORPORATION E-BILL**

---

**CB-TG LAND 11B-20-692  
MAMM CREEK  
Garfield County , Colorado**

**Cement Surface Casing**  
**09-Apr-2011**

**Post Job Report**

## The Road to Excellence Starts with Safety

<b>Sold To #:</b> 343492		<b>Ship To #:</b> 2847528		<b>Quote #:</b>		<b>Sales Order #:</b> 8089894	
<b>Customer:</b> BILL BARRETT CORPORATION E-BILL				<b>Customer Rep:</b> South, Jodi			
<b>Well Name:</b> CB-TG LAND			<b>Well #:</b> 11B-20-692			<b>API/UWI #:</b> 05-045-19753	
<b>Field:</b> MAMM CREEK		<b>City (SAP):</b> SILT		<b>County/Parish:</b> Garfield			<b>State:</b> Colorado
<b>Lat:</b> N 39.518 deg. OR N 39 deg. 31 min. 3.479 secs.				<b>Long:</b> W 107.69 deg. OR W -108 deg. 18 min. 35.197 secs.			
<b>Contractor:</b> Pro Petro			<b>Rig/Platform Name/Num:</b> Pro Petro				
<b>Job Purpose:</b> Cement Surface Casing							
<b>Well Type:</b> Development Well			<b>Job Type:</b> Cement Surface Casing				
<b>Sales Person:</b> METLI, MARSHALL			<b>Srvc Supervisor:</b> CALDWELL, JEFFREY			<b>MBU ID Emp #:</b> 369111	

### Job Personnel

HES Emp Name	Exp Hrs	Emp #	HES Emp Name	Exp Hrs	Emp #	HES Emp Name	Exp Hrs	Emp #
CALDWELL, JEFFREY S	4	369111	SLAUGHTER, JESSE Dean	4	454315	YOUNG, JEREMY R	4	418013

### Equipment

HES Unit #	Distance-1 way	HES Unit #	Distance-1 way	HES Unit #	Distance-1 way	HES Unit #	Distance-1 way
10867094	120 mile	10897925	120 mile	10951249	120 mile	11560046	120 mile
11562538	120 mile						

### Job Hours

Date	On Location Hours	Operating Hours	Date	On Location Hours	Operating Hours	Date	On Location Hours	Operating Hours
04-09-11	4	1						
<b>TOTAL</b>			Total is the sum of each column separately					

### Job

Formation Name	Job	Date	Time	Time Zone
<b>Formation Depth (MD)</b>	<b>Top</b>	<b>Bottom</b>	<b>Called Out</b>	09 - Apr - 2011 08:00 MST
<b>Form Type</b>	BHST	<b>On Location</b>	09 - Apr - 2011 13:00	MST
<b>Job depth MD</b>	835.6 ft	<b>Job Depth TVD</b>	835.6 ft	<b>Job Started</b> 09 - Apr - 2011 15:09 MST
<b>Water Depth</b>		<b>Wk Ht Above Floor</b>	4. ft	<b>Job Completed</b> 09 - Apr - 2011 16:06 MST
<b>Perforation Depth (MD)</b>	<b>From</b>	<b>To</b>	<b>Departed Loc</b>	09 - Apr - 2011 17:00 MST

### Well Data

Description	New / Used	Max pressure psig	Size in	ID in	Weight lbm/ft	Thread	Grade	Top MD ft	Bottom MD ft	Top TVD ft	Bottom TVD ft
12 1/4" Open Hole				12.25				.	800.		
9 5/8" Surface Casing	New		9.625	8.921	36.		J-55	.	800.		

### Sales/Rental/3<sup>rd</sup> Party (HES)

Description	Qty	Qty uom	Depth	Supplier
PLUG,CMTG,TOP,9 5/8,HWE,8.16 MIN/9.06 MA	1	EA		

### Tools and Accessories

Type	Size	Qty	Make	Depth	Type	Size	Qty	Make	Depth	Type	Size	Qty	Make
Guide Shoe					Packer					Top Plug	9.625	1	
Float Shoe					Bridge Plug					Bottom Plug			
Float Collar					Retainer					SSR plug set			
Insert Float										Plug Container	9.625	1	
Stage Tool										Centralizers			

### Miscellaneous Materials

Gelling Agt	Conc	Surfactant	Conc	Acid Type	Qty	Conc	%
Treatment Fld	Conc	Inhibitor	Conc	Sand Type	Size		Qty

Fluid Data										
Stage/Plug #: 1										
Fluid #	Stage Type	Fluid Name	Qty	Qty uom	Mixing Density lbm/gal	Yield ft <sup>3</sup> /sk	Mix Fluid Gal/sk	Rate bbl/min	Total Mix Fluid Gal/sk	
1	Water Spacer		20	bbl	.	.0	.0	5.0		
2	VersaCem Lead Cement	VERSACEM (TM) SYSTEM (452010)	120	sacks	12.3	2.38	13.75	5	13.75	
	13.75 Gal	FRESH WATER								
3	SwiftCem Tail Cement	SWIFTCEM (TM) SYSTEM (452990)	120	sacks	14.2	1.43	6.85	5	6.85	
	6.85 Gal	FRESH WATER								
4	Displacement		60.9	bbl	.	.0	.0	5.0		
Calculated Values		Pressures		Volumes						
Displacement	60.9	Shut In: Instant		Lost Returns		Cement Slurry	81.5	Pad		
Top Of Cement	surface	5 Min		Cement Returns	25	Actual Displacement	60.9	Treatment		
Frac Gradient		15 Min		Spacers	20	Load and Breakdown		Total Job	160	
Rates										
Circulating		Mixing	5	Displacement	5	Avg. Job	5			
Cement Left In Pipe	Amount	46.95 ft	Reason	Shoe Joint						
Frac Ring # 1 @	ID	Frac ring # 2 @	ID	Frac Ring # 3 @	ID	Frac Ring # 4 @	ID			
The Information Stated Herein Is Correct				Customer Representative Signature						

*The Road to Excellence Starts with Safety*

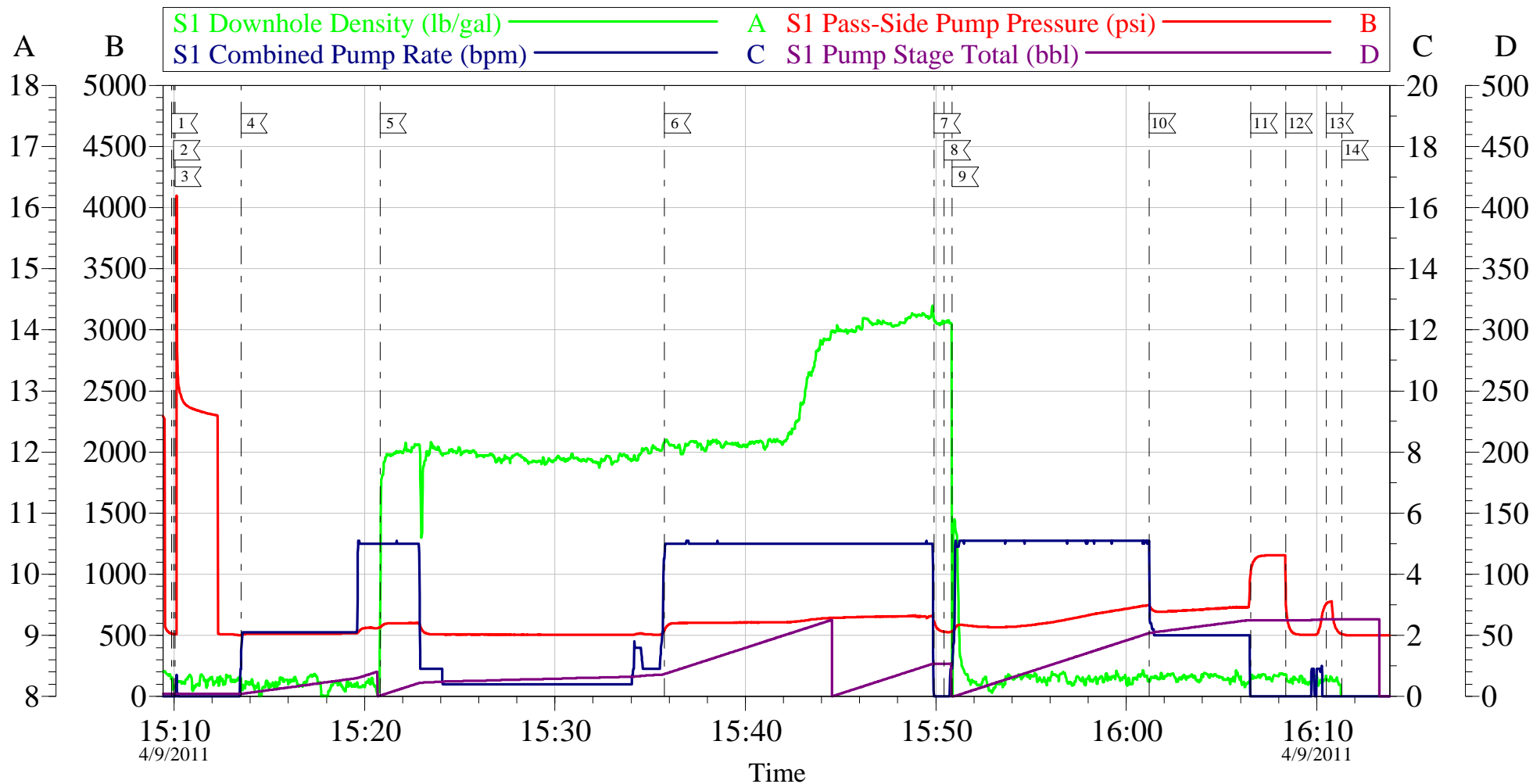
<b>Sold To #:</b> 343492	<b>Ship To #:</b> 2847528	<b>Quote #:</b>	<b>Sales Order #:</b> 8089894
<b>Customer:</b> BILL BARRETT CORPORATION E-BILL		<b>Customer Rep:</b> South, Jodi	
<b>Well Name:</b> CB-TG LAND		<b>Well #:</b> 11B-20-692	<b>API/UWI #:</b> 05-045-19753
<b>Field:</b> MAMM CREEK	<b>City (SAP):</b> SILT	<b>County/Parish:</b> Garfield	<b>State:</b> Colorado
<b>Legal Description:</b>			
<b>Lat:</b> N 39.518 deg. OR N 39 deg. 31 min. 3.479 secs.		<b>Long:</b> W 107.69 deg. OR W -108 deg. 18 min. 35.197 secs.	
<b>Contractor:</b> Pro Petro		<b>Rig/Platform Name/Num:</b> Pro Petro	
<b>Job Purpose:</b> Cement Surface Casing			<b>Ticket Amount:</b>
<b>Well Type:</b> Development Well		<b>Job Type:</b> Cement Surface Casing	
<b>Sales Person:</b> METLI, MARSHALL		<b>Srv Supervisor:</b> CALDWELL, JEFFREY	<b>MBU ID Emp #:</b> 369111

Activity Description	Date/Time	Cht #	Rate bbl/min	Volume bbl		Pressure psig		Comments
				Stage	Total	Tubing	Casing	
Call Out	04/09/2011 08:00							ELITE #5
Pre-Convoy Safety Meeting	04/09/2011 09:45							ALL PERSONNEL ASSOCIATED WITH JOB ATTENDED
Crew Leave Yard	04/09/2011 10:00							
Arrive At Loc	04/09/2011 13:00							
Safety Meeting	04/09/2011 13:05							ALL PERSONNEL ASSOCIATED WITH JOB ATTENDED
Rig-Up Equipment	04/09/2011 13:15							
Pre-Job Safety Meeting	04/09/2011 14:45							ALL PERSONNEL ASSOCIATED WITH JOB ATTENDED
Start Job	04/09/2011 15:09							TP:795.6', SJ:46.95', 12 1/4" OH.
Prime Pumps	04/09/2011 15:09		2	5			80.0	H2O
Test Lines	04/09/2011 15:10							TEST GOOD
Pump Spacer	04/09/2011 15:13		5	20			119.0	H2O
Pump Lead Cement	04/09/2011 15:20		5	50.9			200.0	120 SKS 12.3 PPG 2.38 CUFT/SAK 13 75 GAL/SAK
Pump Tail Cement	04/09/2011 15:35		5	30.6			220.0	120 SKS 14.2 PPG 1.43 CUFT/SAK 6.85 GAL/SAK
Shutdown	04/09/2011 15:49							
Drop Top Plug	04/09/2011 15:50							PLUG AWAY

Activity Description	Date/Time	Cht #	Rate bbl/min	Volume bbl		Pressure psig		Comments
				Stage	Total	Tubing	Casing	
Pump Displacement	04/09/2011 15:50		5	60.9			230.0	H2O
Slow Rate	04/09/2011 16:01		2	50			210.0	
Bump Plug	04/09/2011 16:06		2	60.9			750.0	PLUG BUMPED
Check Floats	04/09/2011 16:08							FLOATS HELD 1/4 BBL BACK. ESTABLISHED CIRCULATION 7 BBLS INTO CEMENT.
Other	04/09/2011 16:10							SHUT IN 350 PSI ON WELL.
End Job	04/09/2011 16:11							25 BBLS OF CEMENT TO SURFACE.
Post-Job Safety Meeting (Pre Rig-Down)	04/09/2011 16:13							ALL PERSONNEL ASSOCIATED WITH JOB ATTENDED
Rig-Down Equipment	04/09/2011 16:15							
Crew Leave Location	04/09/2011 17:00							THANK YOU FOR CHOOSING HALLIBURTON, JEFF CALDWELL AND CREW.

# BILL BARRETT

## CB-TG Land 11B-20-692 Surface



Customer: Bill Barrett	Job Date: 09-Apr-2011	Sales Order #: 8089894
Well Description: CB-TG Land 11B-20-692	Job Type: Surface	ADC Used: Yes
Company Rep: Josh Henderson	Cement Supervisor: Jeff Caldwell	Elite #: 5/Jesse Slaughter