

Nichols 9, 10, 16, 23, 24, 38-6

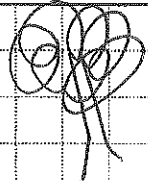


PROJECT \_\_\_\_\_  
PROJECT MANAGER \_\_\_\_\_  
JOB No. \_\_\_\_\_  
LOCATION Sr. 6-T2N-R65W

DATE \_\_\_\_\_  
CONT. No. \_\_\_\_\_  
BY \_\_\_\_\_ CHK'D \_\_\_\_\_  
SHEET No. \_\_\_\_\_ OF \_\_\_\_\_

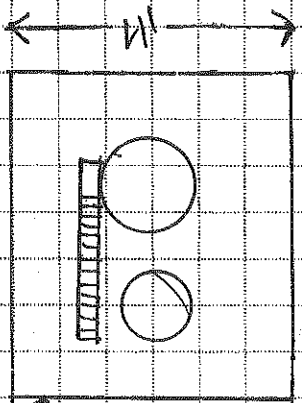
951 T0038 10/1997

W/ NICHOLS 15-6  
NICHOLS 33-6



15' x 12' 300  
Inv. #  
S/N

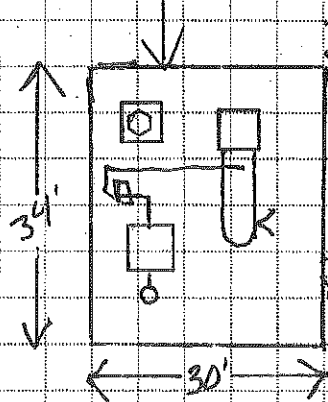
75 38' Fib.  
Inv. #



Power Lines

NORTH

Cinnamon



LEED 300  
Inv. #  
S/N

House Gas  
Automated  
2 stairs

DCP  
Station #

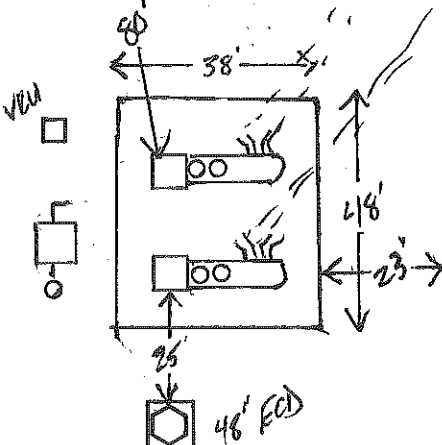
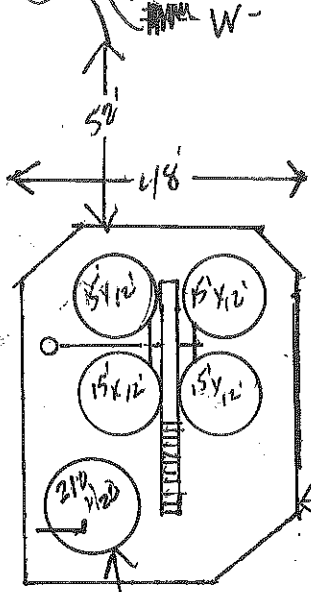
30 34 60 56 41 80 46 35

# BATTERY LAYOUT

W/ Nichols 15-6  
Nichols 33-6

Nichols  
9, 10, 16, 23, 24, 38-6

(SEC. 6-T2N-R65W)



Flowlines  
Power Line

NSBTH

Measurements are approximate!  
Not to scale  
Outlines are steel retainer walls

