

NOBLE ENERGY INC E-BUSINESS
DO NOT MAIL
HOUSTON, Texas

HYRUP 2-34B

H&P Drilling/H&P/322

Post Job Summary

Cement Surface Casing

Prepared for: CHARLES COLLVER
Date Prepared: 10/30/10
Version: 1

Service Supervisor: JAMISON, PRICE

Submitted by:

HALLIBURTON

The Road to Excellence Starts with Safety

The Road to Excellence Starts With Safety

Sold To #: 345242	Ship To #: 2815528	Quote #:	Sales Order #: 7734457
Customer: NOBLE ENERGY INC E-BUSINESS		Customer Rep: Collver, Charles	
Well Name: HYRUP		Well #: 2-34B	API/UWI #: 05-045-14067
Field: GRAND VALLEY	City (SAP): PARACHUTE	County/Parish: Garfield	State: Colorado
Lat: N 39.373 deg. OR N 39 deg. 22 min. 22.541 secs.		Long: W 108.073 deg. OR W -109 deg. 55 min. 36.923 secs.	
Contractor: H&P Drilling		Rig/Platform Name/Num: H&P 322	
Job Purpose: Cement Surface Casing			
Well Type: Development Well		Job Type: Cement Surface Casing	
Sales Person: METLI, MARSHALL		Srv Supervisor: JAMISON, PRICE	MBU ID Emp #: 229155

Job Personnel

HES Emp Name	Exp Hrs	Emp #	HES Emp Name	Exp Hrs	Emp #	HES Emp Name	Exp Hrs	Emp #
BLACKMORE, JASON	4	287012	JAMISON, PRICE W	4	229155	LYNGSTAD, FREDRICK D	4	403742
TRIPLETT, MICHEAL Anthony	4	447908						

Equipment

HES Unit #	Distance-1 way	HES Unit #	Distance-1 way	HES Unit #	Distance-1 way	HES Unit #	Distance-1 way
10551730C	60 mile	10784064	60 mile	10973571	60 mile	11006314	60 mile
11259881	60 mile						

Job Hours

Date	On Location Hours	Operating Hours	Date	On Location Hours	Operating Hours	Date	On Location Hours	Operating Hours
10/30/10	4	2						

TOTAL		Total is the sum of each column separately
-------	--	--------------------------------------------

Job

Formation Name	Top	Bottom	Called Out	Date	Time	Time Zone
Formation Depth (MD)			On Location	30 - Oct - 2010	06:30	MST
Form Type		BHST	Job Started	30 - Oct - 2010	08:00	MST
Job depth MD	1509. ft	Job Depth TVD	Job Completed	30 - Oct - 2010	08:56	MST
Water Depth		Wk Ht Above Floor	Departed Loc	30 - Oct - 2010	10:30	MST
Perforation Depth (MD)	From	To				

Well Data

Description	New / Used	Max pressure psig	Size in	ID in	Weight lbm/ft	Thread	Grade	Top MD ft	Bottom MD ft	Top TVD ft	Bottom TVD ft
OPEN HOLE				12.25				.	1540.	.	1540.
SURFACE CASING	Unknown		8.625	8.097	24.		J-55	.	1509.	.	1509.

Sales/Rental/3rd Party (HES)

Description	Qty	Qty uom	Depth	Supplier
PLUG,CMTG,TOP,8 5/8,HWE,7.20 MIN/8.09 MA	1	EA		
R/A DENSOMETER W/CHART RECORDER,/JOB,ZI	1	JOB		
PORT. DAS W/CEMWIN;ACQUIRE W/HES, ZI	1	JOB		
ADC (AUTO DENSITY CTRL) SYS, /JOB,ZI	1	JOB		

Tools and Accessories

Type	Size	Qty	Make	Depth	Type	Size	Qty	Make	Depth	Type	Size	Qty	Make
Guide Shoe					Packer					Top Plug			
Float Shoe					Bridge Plug					Bottom Plug			
Float Collar					Retainer					SSR plug set			
Insert Float										Plug Container			
Stage Tool										Centralizers			

Miscellaneous Materials

Gelling Agt	Conc	Surfactant	Conc	Acid Type	Qty	Conc	%
Treatment Fld	Conc	Inhibitor	Conc	Sand Type	Size	Qty	

Fluid Data

Stage/Plug #: 1										
Fluid #	Stage Type	Fluid Name	Qty	Qty uom	Mixing Density lbm/gal	Yield ft ³ /sk	Mix Fluid Gal/sk	Rate bbl/min	Total Mix Fluid Gal/sk	
1	Water Spacer		20.00	bbl	8.4	.0	.0	6.0		
2	LEAD CEMENT	VERSACEM (TM) SYSTEM (452010)	217.0	sacks	12.3	2.38	13.75	6.0	13.75	
		13.75 Gal FRESH WATER								
3	Tail Cement	VERSACEM (TM) SYSTEM (452010)	127.0	sacks	12.8	2.11	11.75	6.0	11.75	
		11.75 Gal FRESH WATER								
4	Displacement		93.00	bbl	8.4	.0	.0	8.0		
Calculated Values		Pressures		Volumes						
Displacement	93.3	Shut In: Instant		Lost Returns	NO	Cement Slurry	139.7	Pad		
Top Of Cement	SURFACE	5 Min		Cement Returns	13	Actual Displacement	93	Treatment		
Frac Gradient		15 Min		Spacers	20	Load and Breakdown		Total Job	253	
Rates										
Circulating	10	Mixing	6	Displacement	8	Avg. Job	7			
Cement Left In Pipe	Amount	42.1 ft	Reason	Shoe Joint						
Frac Ring # 1 @	ID	Frac ring # 2 @	ID	Frac Ring # 3 @	ID	Frac Ring # 4 @	ID			
The Information Stated Herein Is Correct				Customer Representative Signature						

The Road to Excellence Starts with Safety

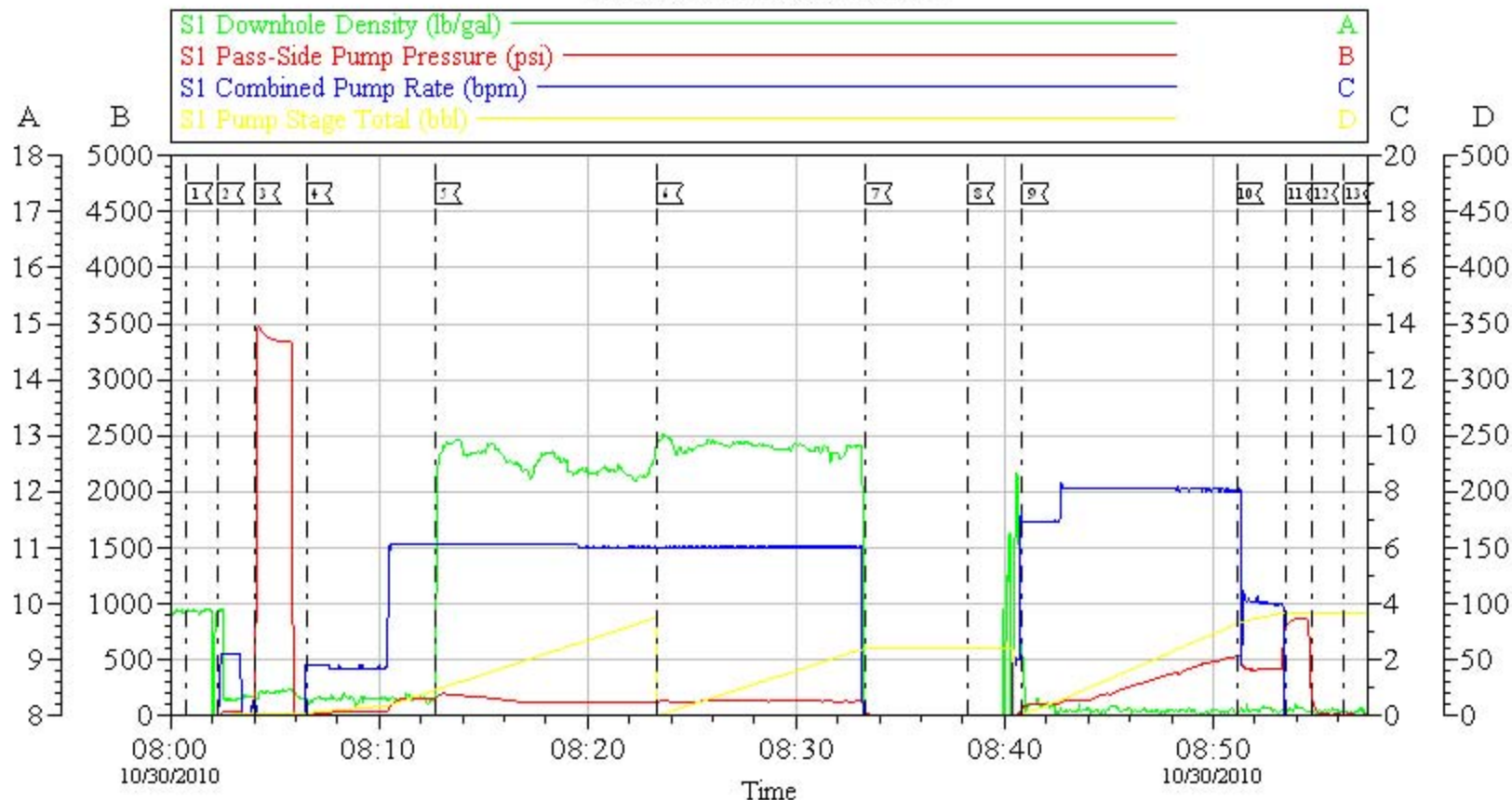
Sold To #: 345242		Ship To #: 2815528		Quote #:		Sales Order #: 7734457	
Customer: NOBLE ENERGY INC E-BUSINESS				Customer Rep: Collver, Charles			
Well Name: HYRUP			Well #: 2-34B			API/UWI #: 05-045-14067	
Field: GRAND VALLEY		City (SAP): PARACHUTE		County/Parish: Garfield		State: Colorado	
Legal Description:							
Lat: N 39.373 deg. OR N 39 deg. 22 min. 22.541 secs.				Long: W 108.073 deg. OR W -109 deg. 55 min. 36.923 secs.			
Contractor: H&P Drilling			Rig/Platform Name/Num: H&P 322				
Job Purpose: Cement Surface Casing						Ticket Amount:	
Well Type: Development Well			Job Type: Cement Surface Casing				
Sales Person: METLI, MARSHALL			Srvc Supervisor: JAMISON, PRICE			MBU ID Emp #: 229155	

Activity Description	Date/Time	Cht #	Rate bbl/min	Volume bbl		Pressure psig		Comments
				Stage	Total	Tubing	Casing	
Call Out	10/30/2010 00:10							TD 1540 HOLE SIZE 12.25 CASING 8.625 24 PPF GRADE J-55 TD 1509 SHOE JOINT 42.12 MUD 9.3 PPG
Depart Yard Safety Meeting	10/30/2010 03:50							
Crew Leave Yard	10/30/2010 04:00							
Arrive At Loc	10/30/2010 06:30							
Assessment Of Location Safety Meeting	10/30/2010 06:45							
Pre-Rig Up Safety Meeting	10/30/2010 07:00							
Pre-Job Safety Meeting	10/30/2010 07:45							
Start Job	10/30/2010 08:00							
Prime Pumps	10/30/2010 08:02		2	2			43.0	FRESH WATER
Test Lines	10/30/2010 08:04						2000.0	
Pump Water	10/30/2010 08:06		6	20			156.0	FRESH WATER
Pump Lead Cement	10/30/2010 08:12		6	92			187.0	MIXED @ 12.3 PPG YIELD 2.38 WAT/REQ 13.75 217 SKS
Pump Tail Cement	10/30/2010 08:23		6	47.7			130.0	MIXED @ 12.8 PPG YIELD 2.11 WAT/REQ 11.75 127 SKS
Shutdown	10/30/2010 08:33							
Drop Plug	10/30/2010 08:38							

Activity Description	Date/Time	Cht #	Rate bbl/min	Volume bbl		Pressure psig		Comments
				Stage	Total	Tubing	Casing	
Pump Displacement	10/30/2010 08:40		8					FRESH WATER
Slow Rate	10/30/2010 08:51		4	83			539.0	
Bump Plug	10/30/2010 08:53		4	93			420.0	PRESSURED UP TO 860
Check Floats	10/30/2010 08:54							FLOATS HELD
End Job	10/30/2010 08:56							CEMENT BACK TO SURFACE 13
Post-Job Safety Meeting (Pre Rig-Down)	10/30/2010 09:30							CASING WAS NOT MOVED THROUGHOUT JOB
Depart Location Safety Meeting	10/30/2010 10:20							
Crew Leave Location	10/30/2010 10:30							THANKS FOR USING HALLIBURTON BILL JAMISON & CREW

NOBLE

8.625 SURFACE CASING



Local Event Log

1< START JOB	08:00:45	2< PRIME LINES	08:02:15	3< TEST LINES	08:04:00
4< START FRESH WATER SPACER	08:04:31	5< START LEAD CEMENT	08:12:40	6< START TAIL CEMENT	08:23:19
7< SHUT DOWN	08:33:20	8< DROP PLUG	08:38:14	9< START DISPLACEMENT	08:40:51
10< SLOW RATE	08:51:08	11< BUMP PLUG	08:53:32	12< CHECK FLOWS	08:54:47
13< END JOB	08:54:17				

Customer: NOBLE
Well Description: HYRUP 2-34B
Company Rep: CHARLES COLLVER

Job Date: 30-Oct-2010
Job Type: CEMENT
Cement Supervisor: BILL JAMISON

Sales Order #: 7734457
ADC Used: YES
Elite #: 2 MIKE TRIPLET

HALLIBURTON
OptiCem v6.3.4
30-Oct-10 09:38