

T 11 N

2A ATTACHMENT

**JULIA K. MULLICAN
TRUSTEE**

**HEIRS OF
JOHN ROWE JR.**

**BEVJAC LAND
CATTLE, LLC.
5797.4'±
351.36 RODS**

**BEVJAC LAND
CATTLE, LLC.
5217.3'±
316.20 RODS**

**BEVJAC LAND
CATTLE, LLC.
5334.7'±
323.32 RODS**

**BEVJAC LAND
CATTLE, LLC.
6289.2'±
381.16 RODS**

**18
BEVJAC LAND
CATTLE, LLC.**

WELD CO., COLORADO

R 64 W

**QUADRANGLE
CHALK BLUFFS EAST**



RIFFIN & ASSOCIATES, INC.
1414 ELK ST., ROCK SPRINGS, WY 82901

(307) 362-5028

DRAWN: 1/13/11 - MMM

SCALE: 1" = 2000'

REVISED: 4/7/11 - KRH

DRG JOB No. 18241

MISC. REVISIONS

EXHIBIT 4 - SHEET 2 OF 2

PROPOSED ROAD

**CHESAPEAKE ENERGY, LLC.
WAGNER 11-65 9-1H
SECTION 9, T11N, R65W**

TOTAL PROPOSED LENGTH: 43,929.6'± / 2,662.40 RODS

PROPOSED ROAD - - - - -

EXISTING ROAD —————

T 11 N

**2A ATTACHMENT
4**

**WAGNER
11-65 9-1H**

**HEIRS OF
JOHN ROWE JR.**

TRUE RANCHES, LLC.

**ROBERT E.
WAGNER, JR.
3536.5'±
214.33 RODS**

**ROBERT E.
WAGNER, JR.
4662.9'±
282.60 RODS**

**ROBERT E.
WAGNER, JR.
5397.0'±
327.09 RODS**

**BEVJAC LAND
CATTLE, LLC.
6289.2'±
381.16 RODS**

**BEVJAC LAND
CATTLE, LLC.
5963.5'±
361.42 RODS**

**ROBERT E.
WAGNER, JR.
1731.1'±
104.92 RODS**

U.S.A.

WELD CO., COLORADO

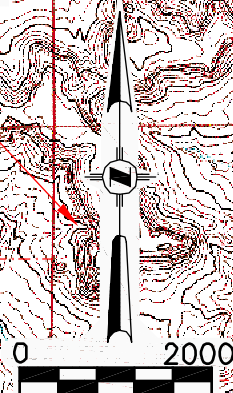
R 65 W

R 64 W

128

**UPRR-USA
#1-19**

INSTALL CMP: C



RIFFIN & ASSOCIATES, INC.
(307) 362-6028 1414 ELK ST., ROCK SPRINGS, WY 82901

DRAWN: 1/13/11 - MMM

SCALE: 1" = 2000'

REVISED: 4/7/11 - KRH

DRG JOB No. 18241

MISC. REVISIONS

EXHIBIT 4 - SHEET 1 OF 2

PROPOSED ROAD

CHESAPEAKE ENERGY, LLC.

WAGNER 11-65 9-1H

SECTION 9, T11N, R65W

TOTAL PROPOSED LENGTH: 43,929.6'± / 2,662.40 RODS

PROPOSED ROAD - - - - -

EXISTING ROAD —————

**QUADRANGLE
CHALK BLUFFS WEST
CHALK BLUFFS EAST**

21