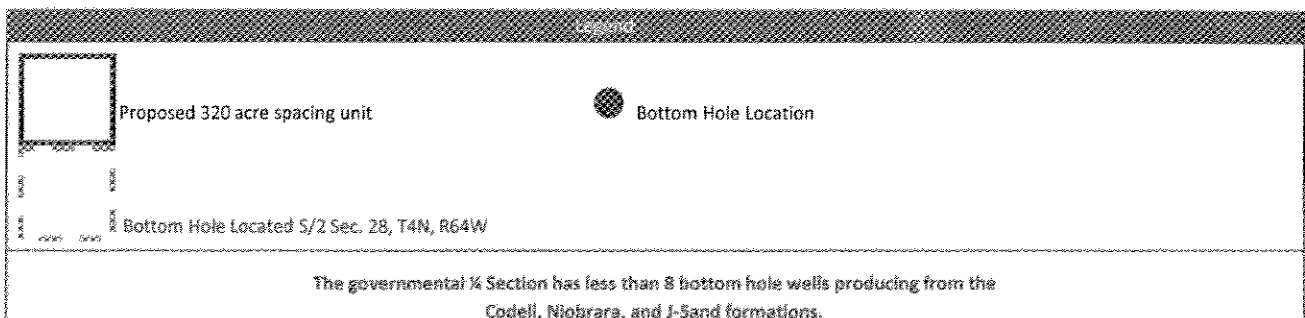
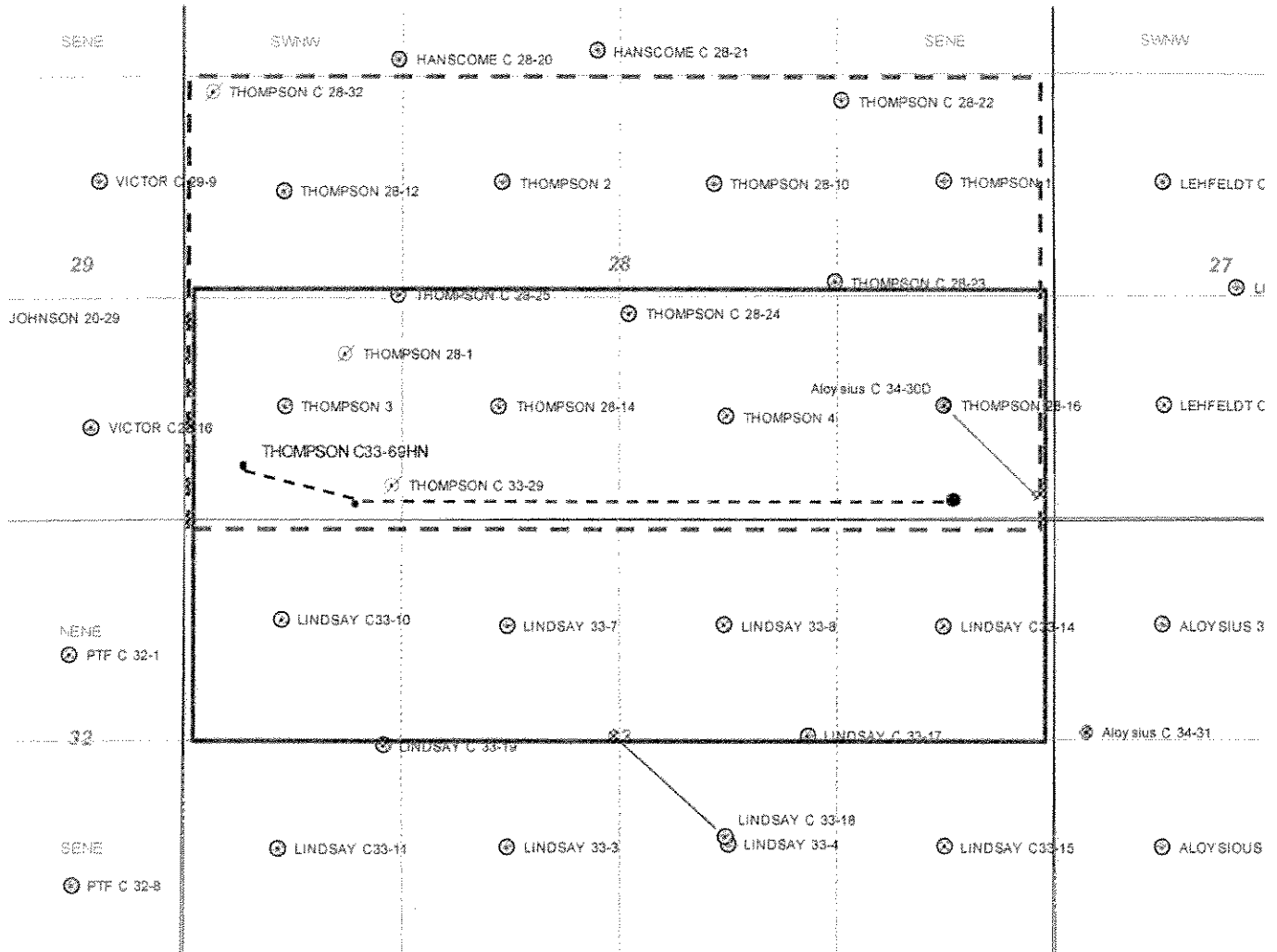


THOMPSON C33-69HN
Proposed Spacing Unit – Noble Energy, Inc
S/2S/2 Section 28, N/2N/2 Section 33 Township 4 North, Range 64 West



PROPOSED SPACING UNIT

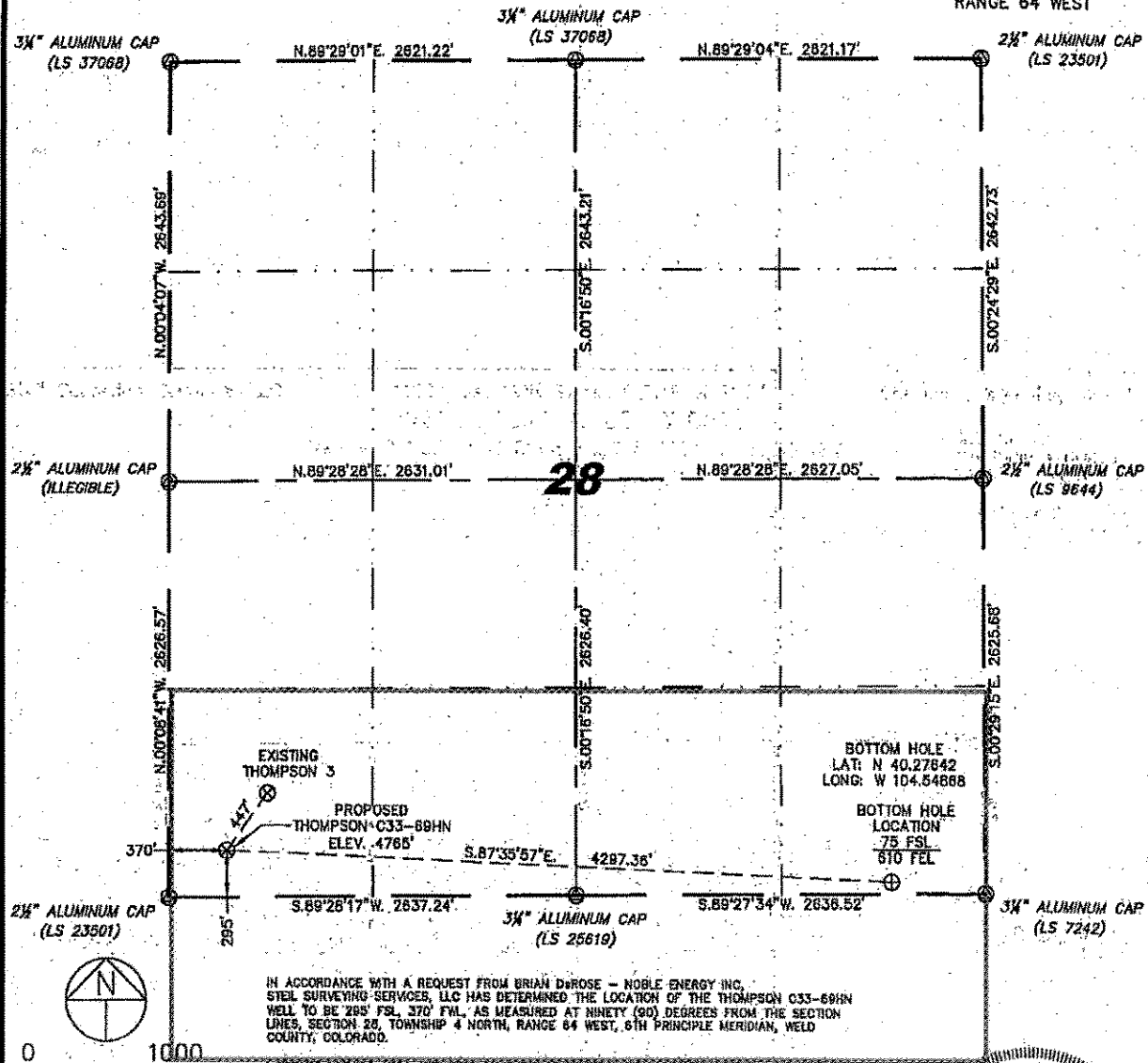
Stell Surveying Services, LLC

1102 West 19th Street P.O. BOX 2073

Cheyenne, Wyoming 82009

WELL LOCATION CERTIFICATE THIS MAP DOES NOT REPRESENT A BOUNDARY SURVEY

SECTION 28
TOWNSHIP 4 NORTH
RANGE 64 WEST



0 1000
Scale: 1" = 1000'

NOTES:

- 1) BASIS OF BEARINGS FOR THIS MAP ARE BASED UPON GPS OBSERVATIONS MADE ON 04/15/2008 BETWEEN MONUMENTS LOCATED AT THE SOUTHEAST SECTION CORNER AND THE NORTHEAST SECTION CORNER OF SAID SECTION AND WITH ALL BEARINGS SHOWN HEREON RELATIVE THERETO.
- 2) COORDINATES SHOWN ARE COLORADO STATE PLANE (NORTH ZONE) NAD 83.
- 3) ELEVATIONS ARE BASED UPON NGS OPUS SOLUTION NAD83 DATUM.
- 4) THE NEAREST EXISTING WELL IS: THOMPSON 3, 447' NORTHEAST.
- 5) SEE LOCATION DRAWING FOR ALL IMPROVEMENTS WITHIN VISIBLE IMPROVEMENTS LIMIT.
- 6) THE LOCATION FALLS IN PASTURE LAND.

NOTICE: According to Colorado law you MUST commence any legal action based upon any defect in this W.L.C. within three years after you first discover such defect. In no event may any action based upon any defect in this W.L.C. be commenced more than two years from the date of the certification shown herein.

LEGEND

- (X) FOUND SURVEY MONUMENT PER MONUMENT RECORD - EXCEPTIONS NOTED.
- (C) CALCULATED DIMENSION

LATITUDE & LONGITUDE (NAD 83 SURFACE HOLE)
LATITUDE: N 40.27704°
LONGITUDE: W 104.56406°
PDOP: 2.5
QUARTER-QUARTER: SW/4SW/4
NEAREST PROPERTY LINE: 295' TO THE SOUTH

David C. Holmes
Professional Land Surveyor Registration No. 32828
State of Colorado

JOB # 10088

Completed 12/10/2010

