



Bill Barrett Corporation

Bill Barrett Corp.

Garfield County, Colorado [NAD83]

Kaufman 3 Pad

GGU Kaufman 11A-30-691

Wellbore #1

Plan: plan1 15mar11 smw

Standard Planning Report

16 March, 2011

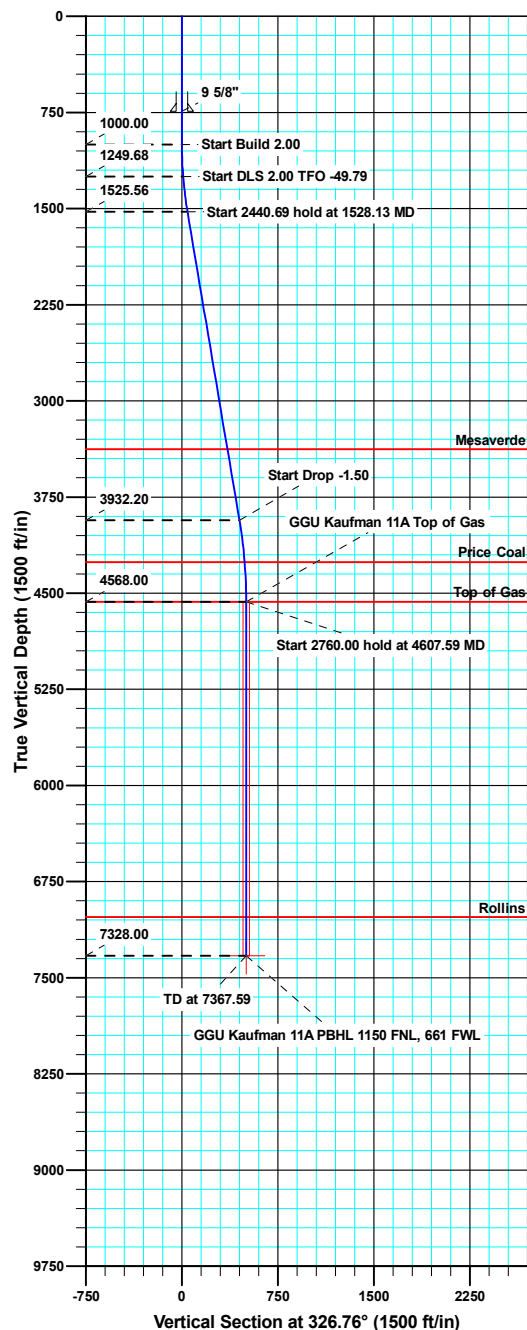




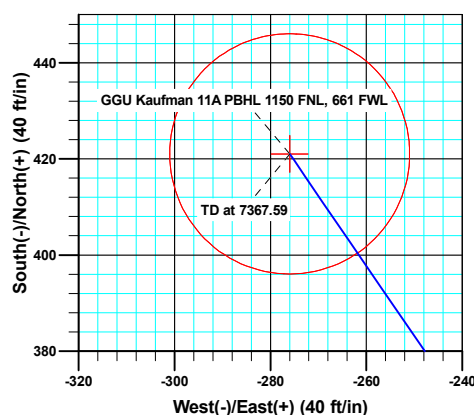
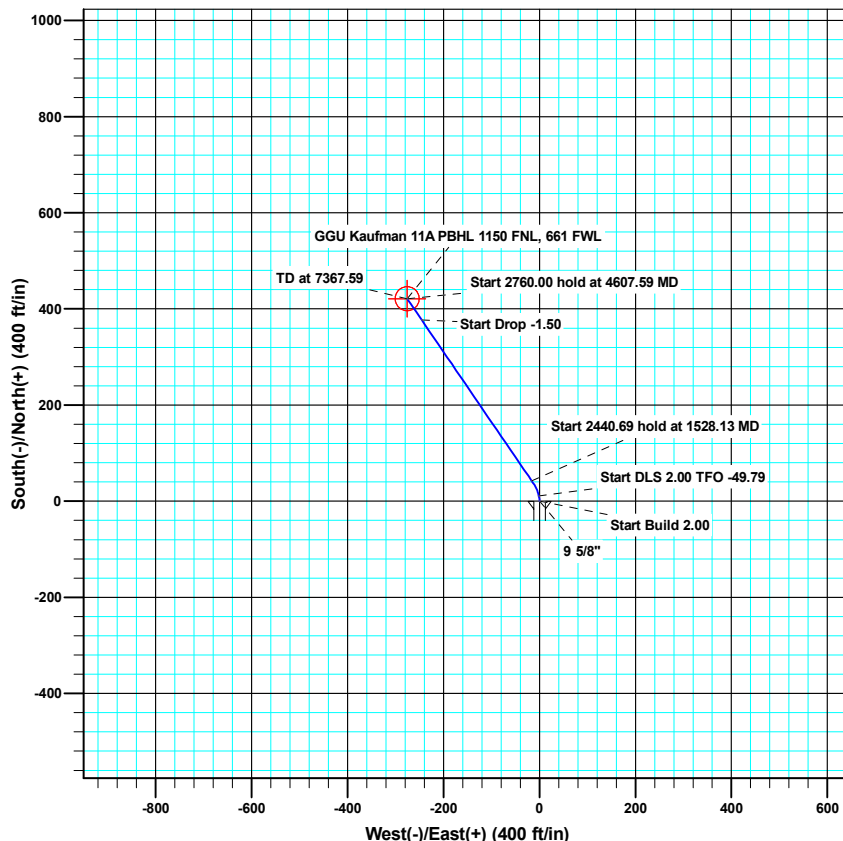
WELL DETAILS: GGU Kaufman 11A-30-691

Ground Level: 5835.00

North American Datum 1983		US State Plane 1983		Colorado Central Zone	
+N/-S	+E/-W	Northing	Easting	Latitude	Longitude
0.00	0.00	1614368.45	2406696.39	39° 30' 4.92 N	107° 36' 9.96 W



Vertical Section at 326.76° (1500 ft/in)



Azimuths to True North
Magnetic North: 10.18°

Magnetic Field
Strength: 52362.2nT
Dip Angle: 65.84°
Date: 03/15/2011
Model: IGRF200510

SECTION DETAILS

MD	Inc	Azi	TVD	+N/-S	+E/-W	Dleg	TFace	VSect	Target
0.00	0.000	0.00	0.00	0.00	0.00	0.00	0.00	0.00	
1000.00	0.000	0.00	1000.00	0.00	0.00	0.00	0.00	0.00	
1250.00	5.000	352.00	1249.68	10.80	-1.52	2.00	352.00	9.86	
1528.13	9.582	325.59	1525.56	41.92	-16.30	2.00	-49.79	43.99	
3968.82	9.582	325.59	3932.20	377.10	-245.86	0.00	0.00	450.17	
4607.59	0.000	0.00	4568.00	421.06	-275.97	1.50	180.00	503.44	GGU Kaufman 11A Top of Gas
7367.59	0.000	0.00	7328.00	421.06	-275.97	0.00	0.00	503.44	GGU Kaufman 11A PBHL 1150 FNL, 661 FWL



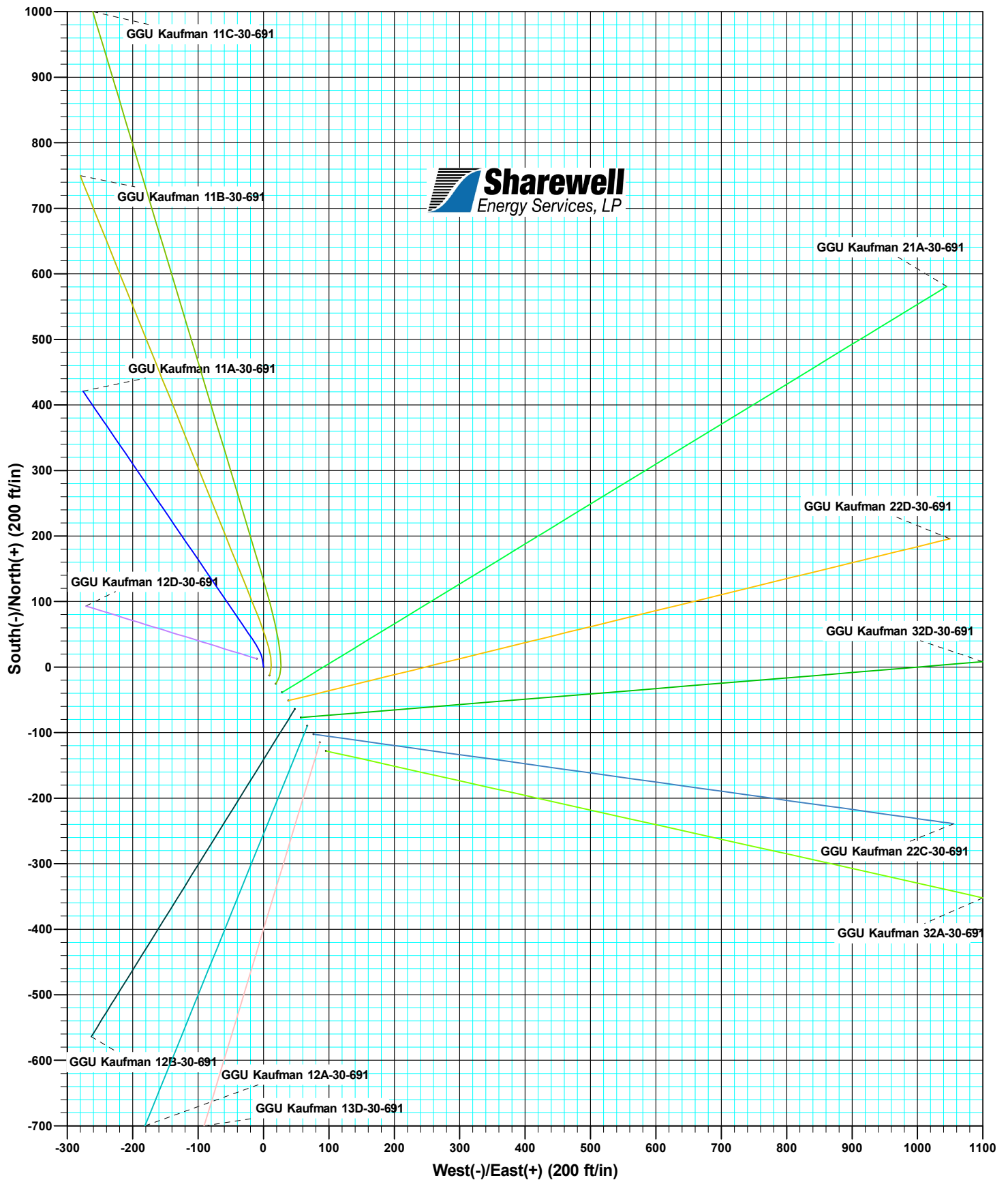


Bill Barrett Corporation

WELL DETAILS: Kaufman 3 Pad

Ground Level: 5835.00

North American Datum 1983		US State Plane 1983		Colorado Central Zone	
+N/-S	+E/-W	Northing	Easting	Latitude	Longitude
0.00	0.00	1614368.45	2406696.39	39° 30' 4.92 N	107° 36' 9.96 W



Database:	Compass VM	Local Co-ordinate Reference:	Well GGU Kaufman 11A-30-691
Company:	Bill Barrett Corp.	TVD Reference:	KB @ 5858.00ft
Project:	Garfield County, Colorado [NAD83]	MD Reference:	KB @ 5858.00ft
Site:	Kaufman 3 Pad	North Reference:	True
Well:	GGU Kaufman 11A-30-691	Survey Calculation Method:	Minimum Curvature
Wellbore:	Wellbore #1		
Design:	plan1 15mar11 smw		

Project	Garfield County, Colorado [NAD83]		
Map System:	US State Plane 1983	System Datum:	Mean Sea Level
Geo Datum:	North American Datum 1983		
Map Zone:	Colorado Central Zone		

Site		Kaufman 3 Pad				
Site Position:		Northing:	1,614,368.45 usft	Latitude:	39° 30' 4.92 N	
	From:	Lat/Long	Easting:	2,406,696.40 usft	Longitude:	107° 36' 9.96 W
Position Uncertainty:		0.00 ft	Slot Radius:	1.10 ft	Grid Convergence:	-1.33

Well	GGU Kaufman 11A-30-691					
Well Position	+N/-S	0.00 ft	Northing:	1,614,368.45 usft	Latitude:	39° 30' 4.92 N
	+E/-W	0.00 ft	Easting:	2,406,696.40 usft	Longitude:	107° 36' 9.96 W
Position Uncertainty		0.00 ft	Wellhead Elevation:		Ground Level:	5,835.00 ft

Wellbore	Wellbore #1				
Magnetics	Model Name	Sample Date	Declination (°)	Dip Angle (°)	Field Strength (nT)
	IGRF200510	03/15/11	10.18	65.84	52,362

Design	plan1 15mar11 smw			
Audit Notes:				
Version:	Phase:	PROTOTYPE	Tie On Depth:	0.00
Vertical Section:	Depth From (TVD)	+N/-S	+E/-W	Direction
	(ft)	(ft)	(ft)	(°)
	0.00	0.00	0.00	326.76

Plan Sections										
Measured Depth (ft)	Inclination (°)	Azimuth (°)	Vertical Depth (ft)	+N/-S (ft)	+E/-W (ft)	Dogleg Rate (°/100ft)	Build Rate (°/100ft)	Turn Rate (°/100ft)	TFO (°)	Target
0.00	0.000	0.00	0.00	0.00	0.00	0.00	0.00	0.00	0.00	
1,000.00	0.000	0.00	1,000.00	0.00	0.00	0.00	0.00	0.00	0.00	
1,250.00	5.000	352.00	1,249.68	10.80	-1.52	2.00	2.00	0.00	352.00	
1,528.13	9.582	325.59	1,525.56	41.92	-16.30	2.00	1.65	-9.49	-49.79	
3,968.82	9.582	325.59	3,932.20	377.10	-245.86	0.00	0.00	0.00	0.00	
4,607.59	0.000	0.00	4,568.00	421.06	-275.97	1.50	-1.50	0.00	180.00	GGU Kaufman 11A T
7,367.59	0.000	0.00	7,328.00	421.06	-275.97	0.00	0.00	0.00	0.00	GGU Kaufman 11A P

Database:	Compass VM	Local Co-ordinate Reference:	Well GGU Kaufman 11A-30-691
Company:	Bill Barrett Corp.	TVD Reference:	KB @ 5858.00ft
Project:	Garfield County, Colorado [NAD83]	MD Reference:	KB @ 5858.00ft
Site:	Kaufman 3 Pad	North Reference:	True
Well:	GGU Kaufman 11A-30-691	Survey Calculation Method:	Minimum Curvature
Wellbore:	Wellbore #1		
Design:	plan1 15mar11 smw		

Planned Survey									
Measured Depth (ft)	Inclination (°)	Azimuth (°)	Vertical Depth (ft)	+N/-S (ft)	+E/-W (ft)	Vertical Section (ft)	Dogleg Rate (°/100ft)	Build Rate (°/100ft)	Turn Rate (°/100ft)
1,000.00	0.000	0.00	1,000.00	0.00	0.00	0.00	0.00	0.00	0.00
Start Build 2.00									
1,100.00	2.000	352.00	1,099.98	1.73	-0.24	1.58	2.00	2.00	0.00
1,200.00	4.000	352.00	1,199.84	6.91	-0.97	6.31	2.00	2.00	0.00
1,250.00	5.000	352.00	1,249.68	10.80	-1.52	9.86	2.00	2.00	0.00
Start DLS 2.00 TFO -49.79									
1,300.00	5.697	344.28	1,299.47	15.34	-2.49	14.20	2.00	1.39	-15.43
1,400.00	7.304	333.68	1,398.82	25.82	-6.66	25.24	2.00	1.61	-10.61
1,500.00	9.069	327.02	1,497.80	38.13	-13.77	39.44	2.00	1.76	-6.66
1,528.13	9.582	325.59	1,525.56	41.92	-16.30	43.99	2.00	1.82	-5.07
Start 2440.69 hold at 1528.13 MD									
1,600.00	9.582	325.59	1,596.43	51.79	-23.06	55.95	0.00	0.00	0.00
1,700.00	9.582	325.59	1,695.03	65.52	-32.46	72.60	0.00	0.00	0.00
1,800.00	9.582	325.59	1,793.64	79.26	-41.87	89.24	0.00	0.00	0.00
1,900.00	9.582	325.59	1,892.24	92.99	-51.27	105.88	0.00	0.00	0.00
2,000.00	9.582	325.59	1,990.85	106.72	-60.68	122.52	0.00	0.00	0.00
2,100.00	9.582	325.59	2,089.45	120.45	-70.08	139.16	0.00	0.00	0.00
2,200.00	9.582	325.59	2,188.06	134.19	-79.49	155.80	0.00	0.00	0.00
2,300.00	9.582	325.59	2,286.66	147.92	-88.89	172.45	0.00	0.00	0.00
2,400.00	9.582	325.59	2,385.27	161.65	-98.30	189.09	0.00	0.00	0.00
2,500.00	9.582	325.59	2,483.87	175.39	-107.71	205.73	0.00	0.00	0.00
2,600.00	9.582	325.59	2,582.48	189.12	-117.11	222.37	0.00	0.00	0.00
2,700.00	9.582	325.59	2,681.08	202.85	-126.52	239.01	0.00	0.00	0.00
2,800.00	9.582	325.59	2,779.69	216.59	-135.92	255.65	0.00	0.00	0.00
2,900.00	9.582	325.59	2,878.29	230.32	-145.33	272.30	0.00	0.00	0.00
3,000.00	9.582	325.59	2,976.90	244.05	-154.73	288.94	0.00	0.00	0.00
3,100.00	9.582	325.59	3,075.50	257.79	-164.14	305.58	0.00	0.00	0.00
3,200.00	9.582	325.59	3,174.11	271.52	-173.54	322.22	0.00	0.00	0.00
3,300.00	9.582	325.59	3,272.71	285.25	-182.95	338.86	0.00	0.00	0.00
3,400.00	9.582	325.59	3,371.32	298.98	-192.36	355.50	0.00	0.00	0.00
3,406.78	9.582	325.59	3,378.00	299.91	-192.99	356.63	0.00	0.00	0.00
Mesaverde									
3,500.00	9.582	325.59	3,469.92	312.72	-201.76	372.15	0.00	0.00	0.00
3,600.00	9.582	325.59	3,568.53	326.45	-211.17	388.79	0.00	0.00	0.00
3,700.00	9.582	325.59	3,667.13	340.18	-220.57	405.43	0.00	0.00	0.00
3,800.00	9.582	325.59	3,765.74	353.92	-229.98	422.07	0.00	0.00	0.00
3,900.00	9.582	325.59	3,864.34	367.65	-239.38	438.71	0.00	0.00	0.00
3,968.82	9.582	325.59	3,932.20	377.10	-245.86	450.17	0.00	0.00	0.00
Start Drop -1.50									
4,000.00	9.114	325.59	3,962.97	381.28	-248.72	455.23	1.50	-1.50	0.00
4,100.00	7.614	325.59	4,061.90	393.28	-256.94	469.77	1.50	-1.50	0.00
4,200.00	6.114	325.59	4,161.18	403.14	-263.69	481.72	1.50	-1.50	0.00
4,297.25	4.655	325.59	4,258.00	410.67	-268.85	490.84	1.50	-1.50	0.00
Price Coal									
4,300.00	4.614	325.59	4,260.74	410.85	-268.97	491.07	1.50	-1.50	0.00
4,400.00	3.114	325.59	4,360.51	416.41	-272.78	497.80	1.50	-1.50	0.00
4,500.00	1.614	325.59	4,460.42	419.81	-275.11	501.93	1.50	-1.50	0.00
4,600.00	0.114	325.59	4,560.41	421.06	-275.96	503.43	1.50	-1.50	0.00
4,607.59	0.000	0.00	4,568.00	421.06	-275.97	503.44	1.50	-1.50	0.00
Start 2760.00 hold at 4607.59 MD - Top of Gas - GGU Kaufman 11A Top of Gas									
4,700.00	0.000	0.00	4,660.41	421.06	-275.97	503.44	0.00	0.00	0.00
4,800.00	0.000	0.00	4,760.41	421.06	-275.97	503.44	0.00	0.00	0.00
4,900.00	0.000	0.00	4,860.41	421.06	-275.97	503.44	0.00	0.00	0.00

Database:	Compass VM	Local Co-ordinate Reference:	Well GGU Kaufman 11A-30-691
Company:	Bill Barrett Corp.	TVD Reference:	KB @ 5858.00ft
Project:	Garfield County, Colorado [NAD83]	MD Reference:	KB @ 5858.00ft
Site:	Kaufman 3 Pad	North Reference:	True
Well:	GGU Kaufman 11A-30-691	Survey Calculation Method:	Minimum Curvature
Wellbore:	Wellbore #1		
Design:	plan1 15mar11 smw		

Planned Survey										
Measured Depth (ft)	Inclination (°)	Azimuth (°)	Vertical Depth (ft)	+N/-S (ft)	+E/-W (ft)	Vertical Section (ft)	Dogleg Rate (°/100ft)	Build Rate (°/100ft)	Turn Rate (°/100ft)	
5,000.00	0.000	0.00	4,960.41	421.06	-275.97	503.44	0.00	0.00	0.00	
5,100.00	0.000	0.00	5,060.41	421.06	-275.97	503.44	0.00	0.00	0.00	
5,200.00	0.000	0.00	5,160.41	421.06	-275.97	503.44	0.00	0.00	0.00	
5,300.00	0.000	0.00	5,260.41	421.06	-275.97	503.44	0.00	0.00	0.00	
5,400.00	0.000	0.00	5,360.41	421.06	-275.97	503.44	0.00	0.00	0.00	
5,500.00	0.000	0.00	5,460.41	421.06	-275.97	503.44	0.00	0.00	0.00	
5,600.00	0.000	0.00	5,560.41	421.06	-275.97	503.44	0.00	0.00	0.00	
5,700.00	0.000	0.00	5,660.41	421.06	-275.97	503.44	0.00	0.00	0.00	
5,800.00	0.000	0.00	5,760.41	421.06	-275.97	503.44	0.00	0.00	0.00	
5,900.00	0.000	0.00	5,860.41	421.06	-275.97	503.44	0.00	0.00	0.00	
6,000.00	0.000	0.00	5,960.41	421.06	-275.97	503.44	0.00	0.00	0.00	
6,100.00	0.000	0.00	6,060.41	421.06	-275.97	503.44	0.00	0.00	0.00	
6,200.00	0.000	0.00	6,160.41	421.06	-275.97	503.44	0.00	0.00	0.00	
6,300.00	0.000	0.00	6,260.41	421.06	-275.97	503.44	0.00	0.00	0.00	
6,400.00	0.000	0.00	6,360.41	421.06	-275.97	503.44	0.00	0.00	0.00	
6,500.00	0.000	0.00	6,460.41	421.06	-275.97	503.44	0.00	0.00	0.00	
6,600.00	0.000	0.00	6,560.41	421.06	-275.97	503.44	0.00	0.00	0.00	
6,700.00	0.000	0.00	6,660.41	421.06	-275.97	503.44	0.00	0.00	0.00	
6,800.00	0.000	0.00	6,760.41	421.06	-275.97	503.44	0.00	0.00	0.00	
6,900.00	0.000	0.00	6,860.41	421.06	-275.97	503.44	0.00	0.00	0.00	
7,000.00	0.000	0.00	6,960.41	421.06	-275.97	503.44	0.00	0.00	0.00	
7,067.59	0.000	0.00	7,028.00	421.06	-275.97	503.44	0.00	0.00	0.00	
Rollins										
7,100.00	0.000	0.00	7,060.41	421.06	-275.97	503.44	0.00	0.00	0.00	
7,200.00	0.000	0.00	7,160.41	421.06	-275.97	503.44	0.00	0.00	0.00	
7,300.00	0.000	0.00	7,260.41	421.06	-275.97	503.44	0.00	0.00	0.00	
7,367.59	0.000	0.00	7,328.00	421.06	-275.97	503.44	0.00	0.00	0.00	
TD at 7367.59 - GGU Kaufman 11A PBHL 1150 FNL, 661 FWL										

Design Targets									
Target Name - hit/miss target - Shape	Dip Angle (°)	Dip Dir. (°)	TVD (ft)	+N/-S (ft)	+E/-W (ft)	Northing (usft)	Easting (usft)	Latitude	Longitude
GGU Kaufman 11A Top - plan hits target center - Circle (radius 25.00)	0.000	0.00	4,568.00	421.06	-275.97	1,614,795.79	2,406,430.25	39° 30' 9.08 N	107° 36' 13.48 W
GGU Kaufman 11A PBH - plan hits target center - Point	0.000	0.00	7,328.00	421.06	-275.97	1,614,795.79	2,406,430.25	39° 30' 9.08 N	107° 36' 13.48 W

Casing Points					
Measured Depth (ft)	Vertical Depth (ft)	Name		Casing Diameter (ft)	Hole Diameter (ft)
740.00	740.00	9 5/8"		0.80	1.02

Database:	Compass VM	Local Co-ordinate Reference:	Well GGU Kaufman 11A-30-691
Company:	Bill Barrett Corp.	TVD Reference:	KB @ 5858.00ft
Project:	Garfield County, Colorado [NAD83]	MD Reference:	KB @ 5858.00ft
Site:	Kaufman 3 Pad	North Reference:	True
Well:	GGU Kaufman 11A-30-691	Survey Calculation Method:	Minimum Curvature
Wellbore:	Wellbore #1		
Design:	plan1 15mar11 smw		

Formations					
Measured Depth (ft)	Vertical Depth (ft)	Name	Lithology	Dip (°)	Dip Direction (°)
3,406.78	3,378.00	Mesaverde		0.00	
4,297.25	4,258.00	Price Coal		0.00	
4,607.59	4,568.00	Top of Gas		0.00	
7,067.59	7,028.00	Rollins		0.00	

Plan Annotations				
Measured Depth (ft)	Vertical Depth (ft)	Local Coordinates		Comment
		+N/-S (ft)	+E/-W (ft)	
1,000.00	1,000.00	0.00	0.00	Start Build 2.00
1,250.00	1,249.68	10.80	-1.52	Start DLS 2.00 TFO -49.79
1,528.13	1,525.56	41.92	-16.30	Start 2440.69 hold at 1528.13 MD
3,968.82	3,932.20	377.10	-245.86	Start Drop -1.50
4,607.59	4,568.00	421.06	-275.97	Start 2760.00 hold at 4607.59 MD
7,367.59	7,328.00	421.06	-275.97	TD at 7367.59