

**LEGEND:**

**EOG RESOURCES, INC.**

**GEARY CREEK #02-03H**  
**SECTION 3, T10N, R63W, 6th P.M.**  
**501' FSL 2307' FWL**



**Uintah Engineering & Land Surveying**  
85 South 200 East Vernal, Utah 84078  
(435) 789-1017 \* FAX (435) 789-1813



**REFERENCE AREA**  
**MAP**

**02 02 11**  
MONTH DAY YEAR

SCALE: 1" = 2000' DRAWN BY: S.F. REVISED: 00-00-00

**REF**  
**TOPO**



**EOG RESOURCES, INC.**  
**GEARY CREEK #02-03H**  
**LOCATED IN WELD COUNTY, COLORADO**  
**SECTION 3, T10N, R63W, 6th P.M.**



**PHOTO: VIEW OF REFERENCE AREA**

**CAMERA ANGLE: NORTHERLY**



**PHOTO: VIEW OF REFERENCE AREA**

**CAMERA ANGLE: EASTERLY**



- Since 1964 -

**UELS**

Uintah Engineering & Land Surveying  
85 South 200 East Vernal, Utah 84078  
(435) 789-1017 \* FAX (435) 789-1813

**REFERENCE AREA  
PHOTOS**

**02 02 11**  
MONTH DAY YEAR

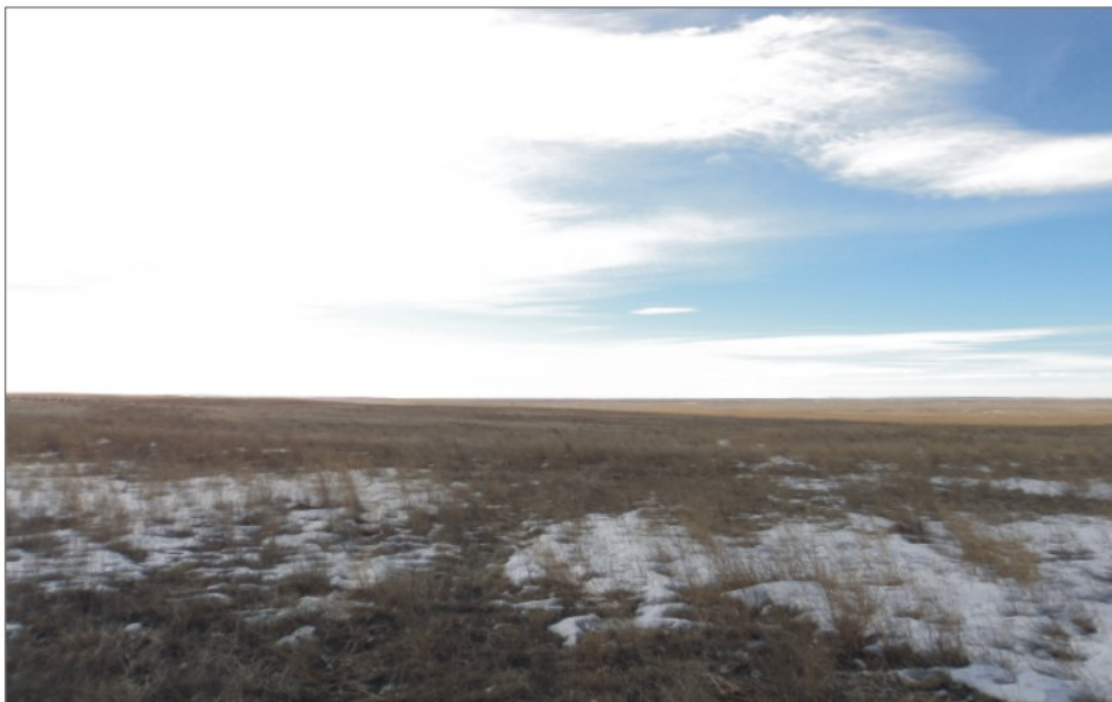
**PHOTO  
REF1**

TAKEN BY: G.M.

DRAWN BY: S.F.

REVISED: 00-00-00

**EOG RESOURCES, INC.**  
**GEARY CREEK #02-03H**  
**LOCATED IN WELD COUNTY, COLORADO**  
**SECTION 3, T10N, R63W, 6th P.M.**



**PHOTO: VIEW OF REFERENCE AREA**

**CAMERA ANGLE: SOUTHERLY**



**PHOTO: VIEW OF REFERENCE AREA**

**CAMERA ANGLE: WESTERLY**



- Since 1964 -

**UELS**

Uintah Engineering & Land Surveying  
85 South 200 East Vernal, Utah 84078  
(435) 789-1017 \* FAX (435) 789-1813

**REFERENCE AREA  
PHOTOS**

**02 02 11**  
MONTH DAY YEAR

**PHOTO  
REF2**

TAKEN BY: G.M.

DRAWN BY: S.F.

REVISED: 00-00-00