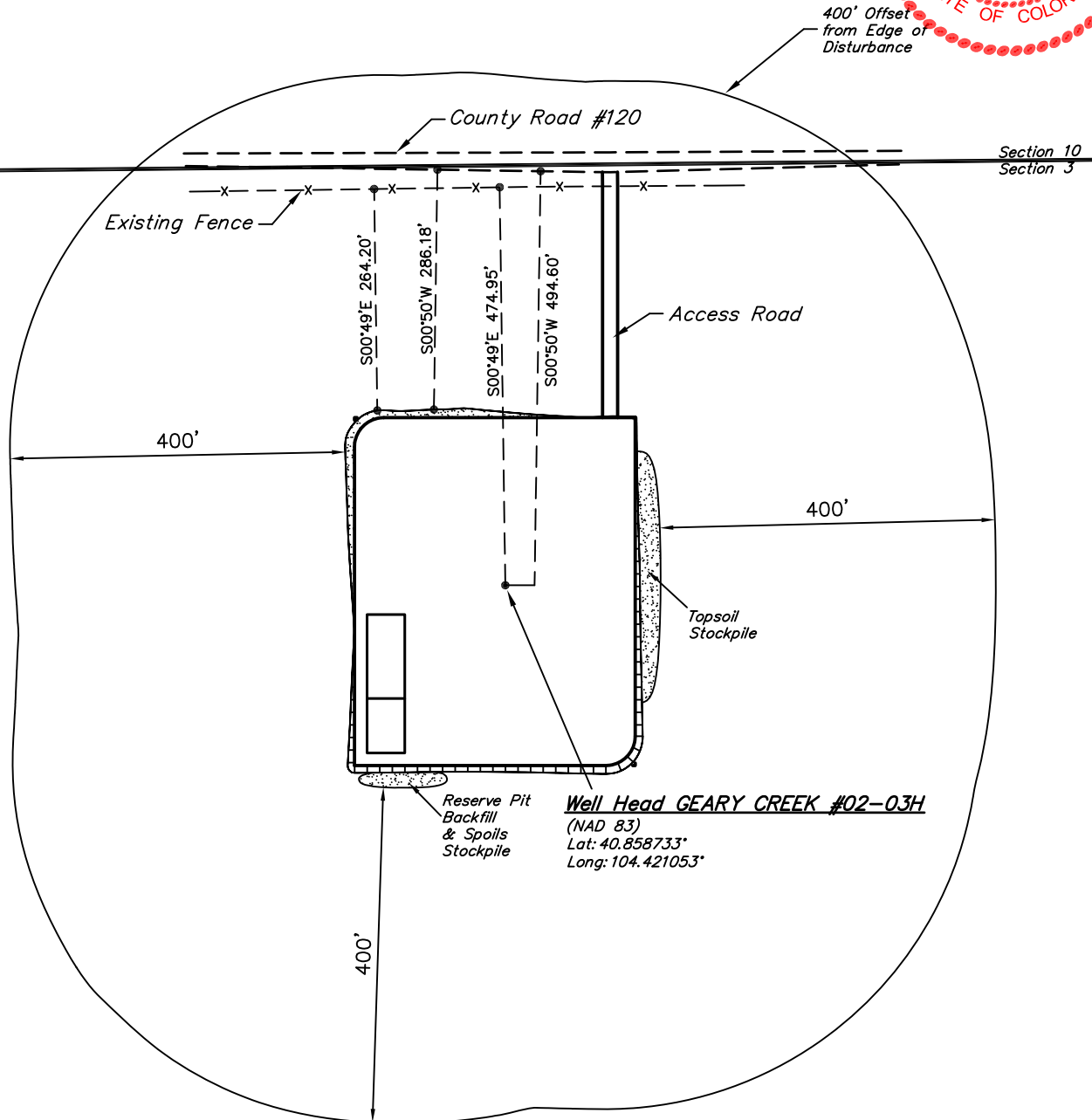
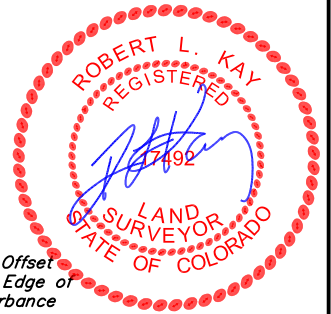




EOG RESOURCES, INC.  
ADDENDUM TO LEGAL PLAT FOR  
GEARY CREEK #02-03H  
SECTION 3, T10N, R63W, 6th P.M.  
501' FSL 2307' FWL

SCALE: 1" = 200'  
DATE: 01-20-11  
DRAWN BY: K.O.



# EOG RESOURCES, INC.

## CONSTRUCTION LAYOUT FOR

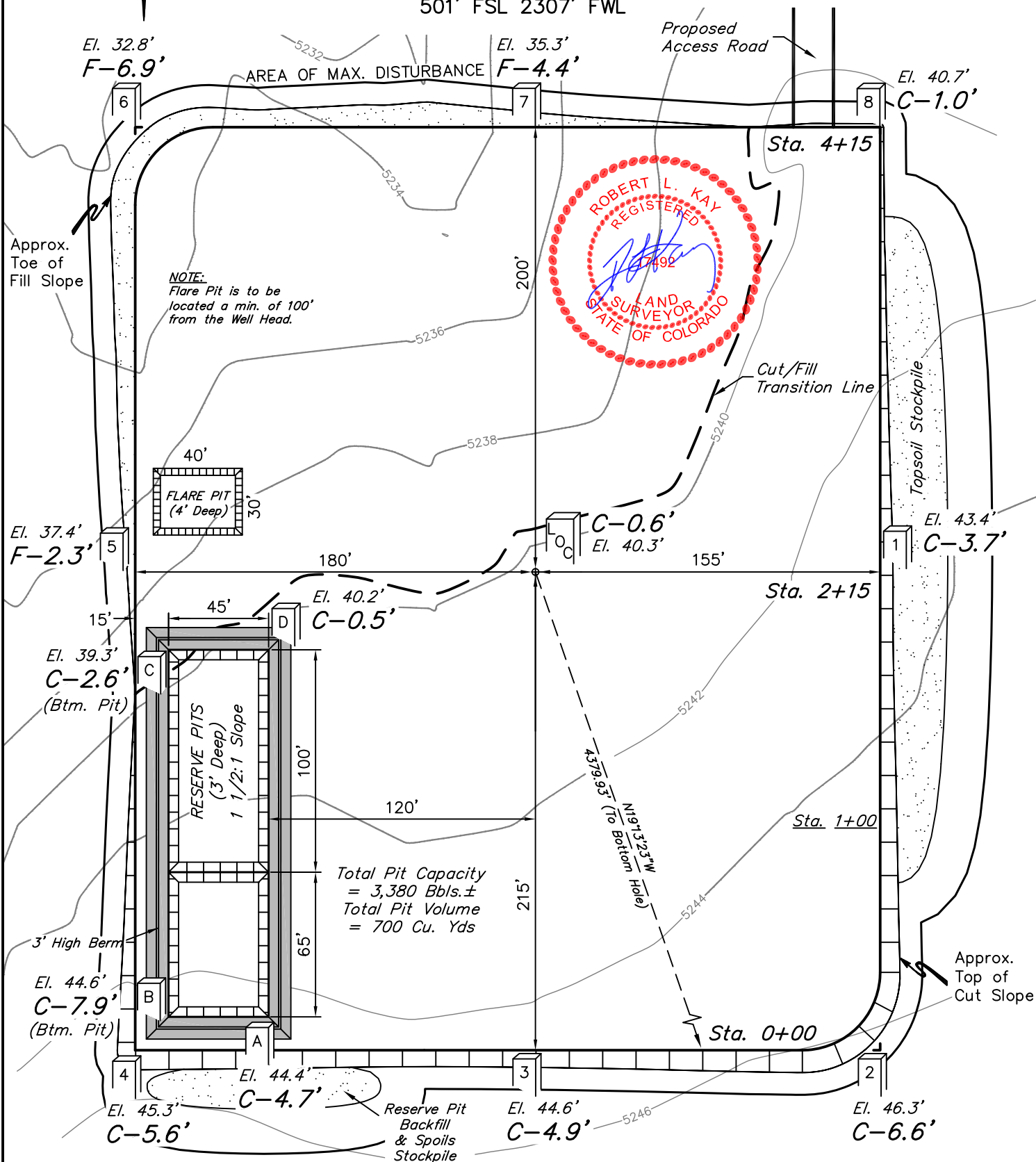
GEARY CREEK #02-03H  
SECTION 3, T10N, R63W, 6th P.M.  
501' FSL 2307' FWL

FIGURE #1

SCALE: 1" = 60'

DATE: 01-20-11

DRAWN BY: K.O.



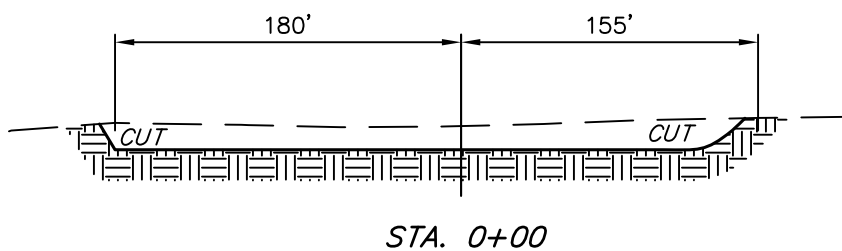
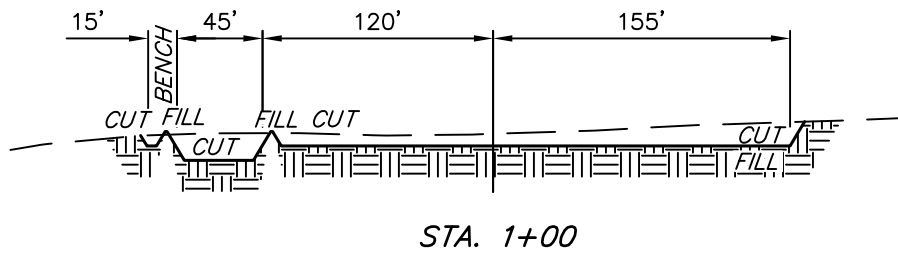
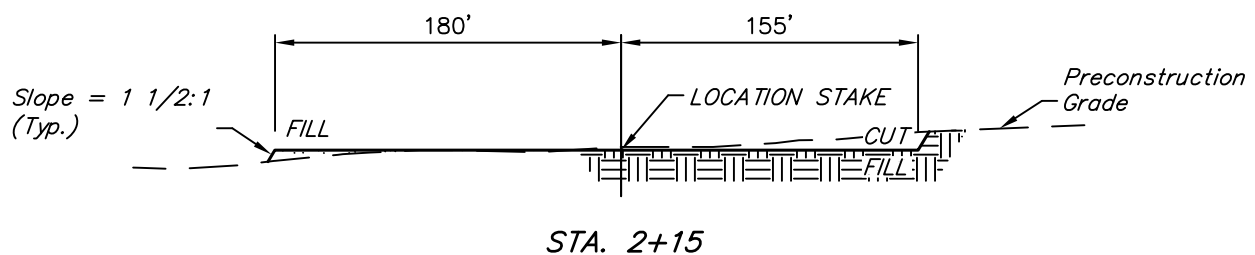
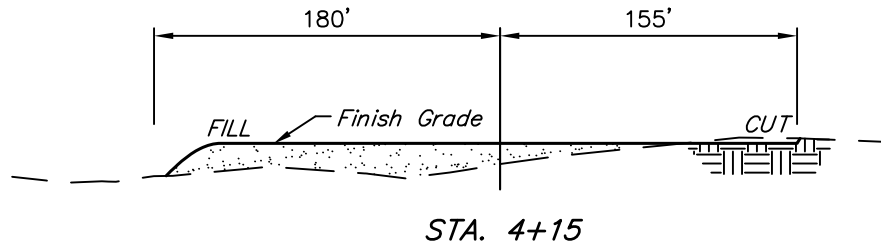
Elev. Ungraded Ground At Loc. Stake = 5240.3'  
FINISHED GRADE ELEV. AT LOC. STAKE = 5239.7'

UINTAH ENGINEERING & LAND SURVEYING  
85 So. 200 East \* Vernal, Utah 84078 \* (435) 789-1017

1" = 40'  
X-Section  
Scale  
1" = 100'  
DATE: 01-20-11  
DRAWN BY: K.O.

EOG RESOURCES, INC.  
CONSTRUCTION LAYOUT CROSS SECTIONS FOR  
GEARY CREEK #02-03H  
SECTION 3, T10N, R63W, 6th P.M.  
501' FSL 2307' FWL

FIGURE #2



NOTE:

Topsoil should not be Stripped Below Finished Grade on Substructure Area.

APPROXIMATE ACREAGES

WELL SITE DISTURBANCE = ± 4.069 ACRES  
ACCESS ROAD DISTURBANCE = ± 0.197 ACRES  
TOTAL = ± 4.266 ACRES

\* NOTE:  
FILL QUANTITY INCLUDES 5% FOR COMPACTION

APPROXIMATE YARDAGES

(6") Topsoil Stripping = 2,790 Cu. Yds.  
Remaining Location = 7,800 Cu. Yds.  
TOTAL CUT = 10,590 CU.YDS.  
FILL = 7,450 CU.YDS.

EXCESS MATERIAL = 3,140 Cu. Yds.  
Topsoil & Pit Backfill (1/2 Pit Vol.) = 3,140 Cu. Yds.  
EXCESS UNBALANCE (After Interim Rehabilitation) = 0 Cu. Yds.

UINTAH ENGINEERING & LAND SURVEYING  
85 So. 200 East \* Vernal, Utah 84078 \* (435) 789-1017

# EOG RESOURCES, INC.

## TYPICAL RIG LAYOUT FOR

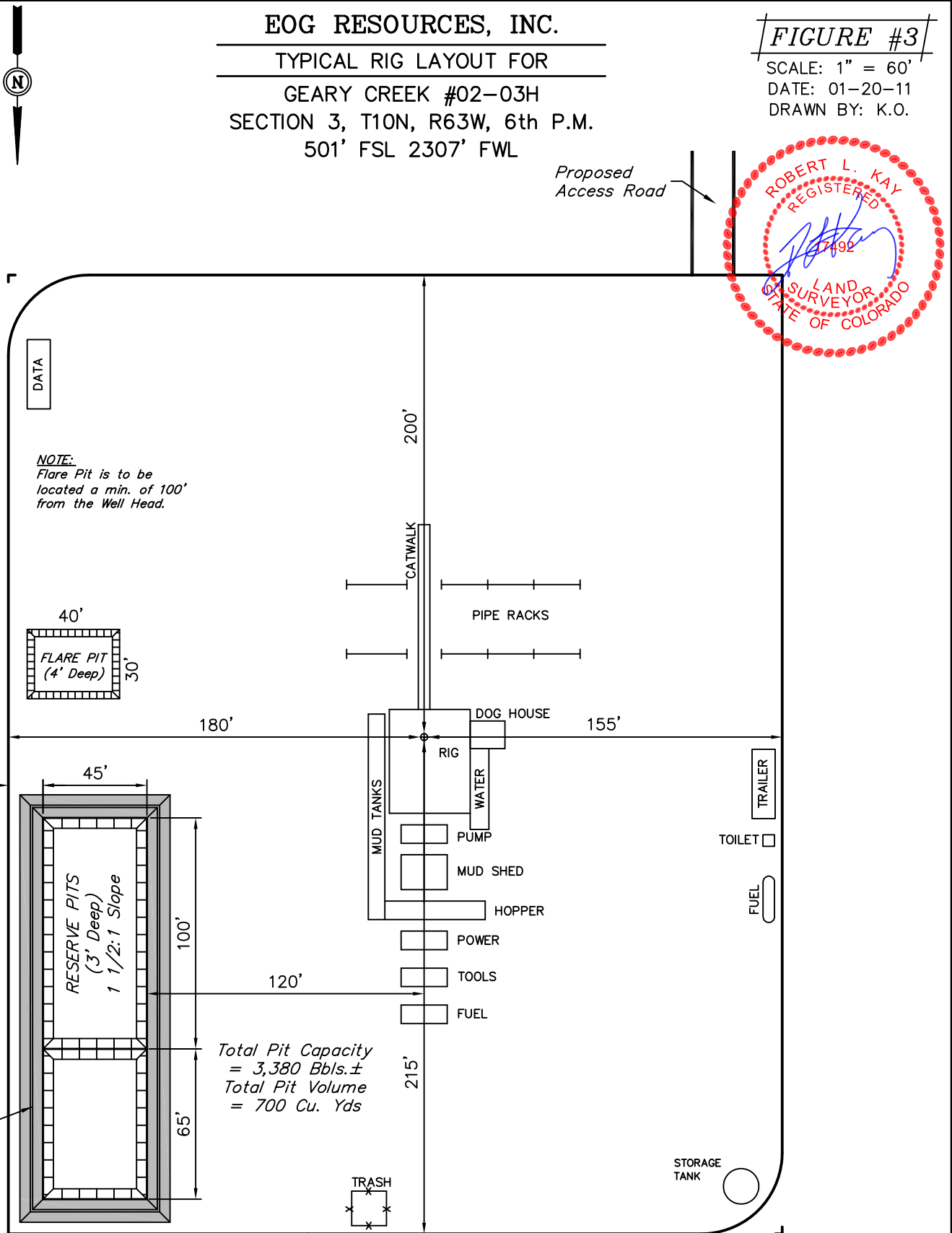
GEARY CREEK #02-03H  
SECTION 3, T10N, R63W, 6th P.M.  
501' FSL 2307' FWL

FIGURE #3

SCALE: 1" = 60'

DATE: 01-20-11

DRAWN BY: K.O.



EOG RESOURCES, INC.  
RECLAMATION DIAGRAM FOR  
GEARY CREEK #02-03H  
SECTION 3, T10N, R63W, 6th P.M.  
501' FSL 2307' FWL

FIGURE #4

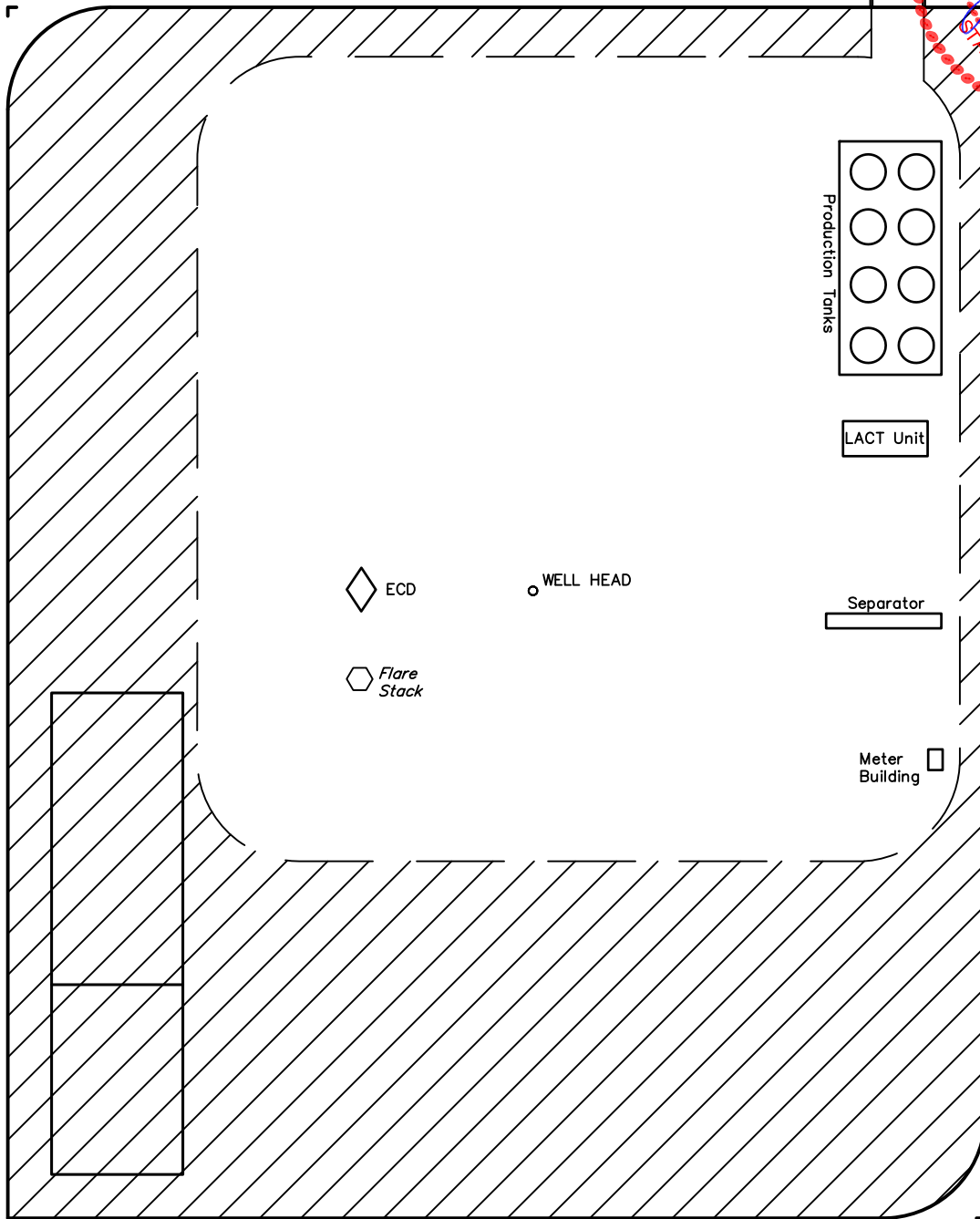
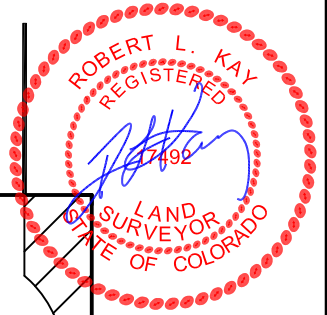
SCALE: 1" = 60'

DATE: 01-20-11

DRAWN BY: K.O.



Access Road



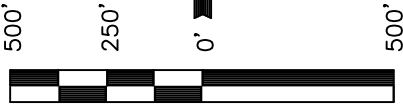
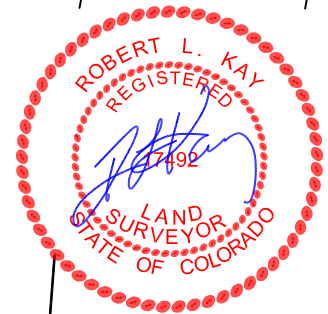
APPROXIMATE ACREAGES  
UN-RECLAIMED =  $\pm 1.541$  ACRES



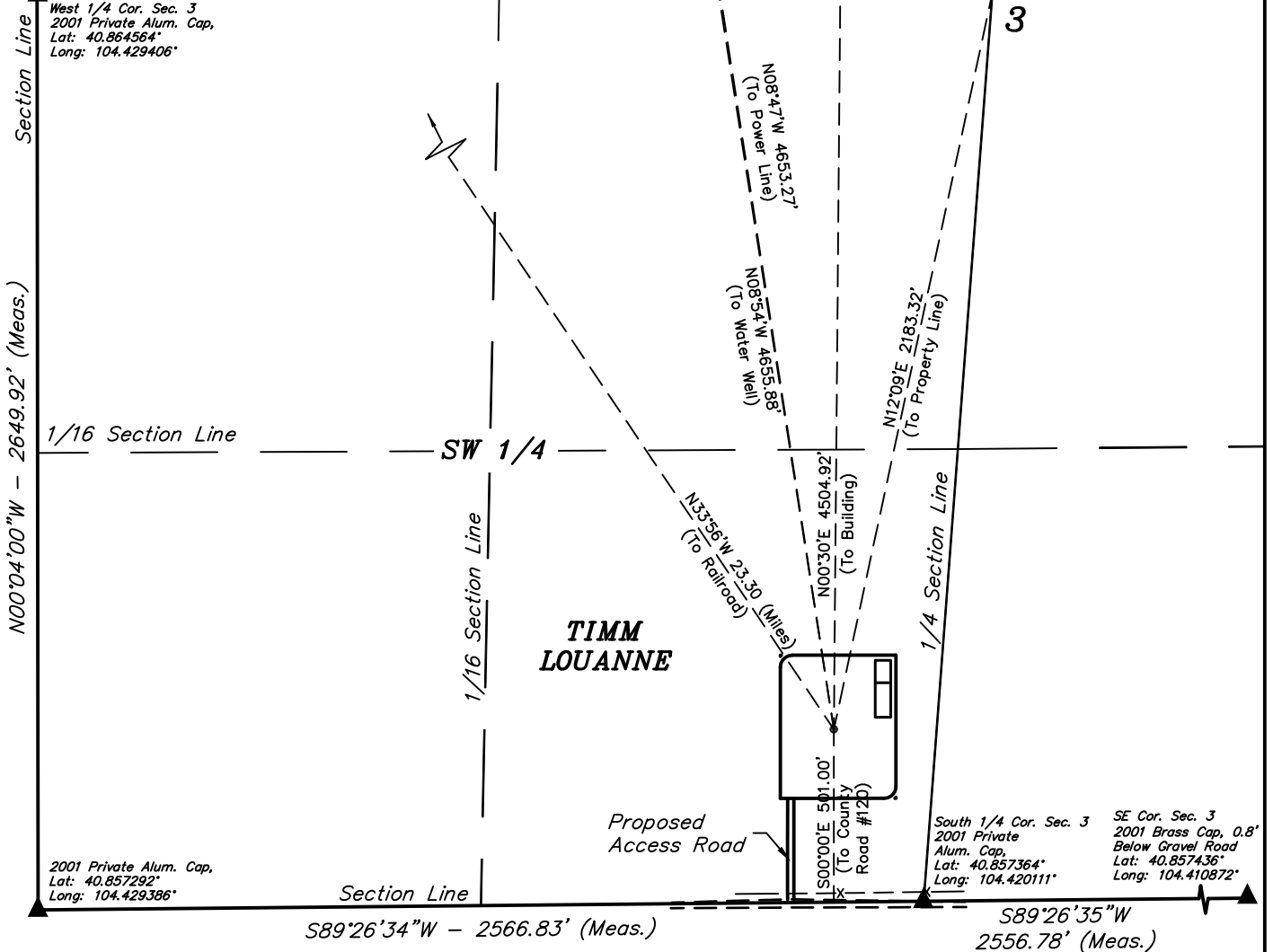
# EOG RESOURCES, INC.

LOCATION DRAWING FOR  
GEARY CREEK #02-03H  
SECTION 3, T10N, R63W, 6th P.M.  
501' FSL 2307' FWL

FIGURE #5



SCALE  
DATE: 01-20-11  
DRAWN BY: K.O.



## PLANT COMMUNITY

- ☐ DISTURBED GRASSLAND
- ☐ NATIVE GRASSLAND
- ☐ SHRUB LAND
- ☐ PLAINS RIPARIAN
- ☐ MOUNTAIN RIPARIAN
- ☐ FOREST LAND
- ☐ WETLANDS AQUATIC
- ☐ ALPINE
- ☐ OTHER (Describe): \_\_\_\_\_

## CURRENT LAND USE

- CROP LAND: ☐ IRRIGATED ☐ DRY LAND ☐ IMPROVED PASTURE ☐ HAY MEADOW ☐ CRP
- NON-CROP LAND: ☐ RANGELAND ☐ TIMBER ☐ RECREATIONAL ☐ OTHER (Describe) \_\_\_\_\_
- SUBDIVIDED: ☐ INDUSTRIAL ☐ COMMERCIAL ☐ RESIDENTIAL

## FUTURE LAND USE

- CROP LAND: ☐ IRRIGATED ☐ DRY LAND ☐ IMPROVED PASTURE ☐ HAY MEADOW ☐ CRP
- NON-CROP LAND: ☐ RANGELAND ☐ TIMBER ☐ RECREATIONAL ☐ OTHER (Describe) \_\_\_\_\_
- SUBDIVIDED: ☐ INDUSTRIAL ☐ COMMERCIAL ☐ RESIDENTIAL

UINTAH ENGINEERING & LAND SURVEYING  
85 So. 200 East \* Vernal, Utah 84078 \* (435) 789-1017