

T5N, R61W, 6th P.M.

EOG RESOURCES, INC.

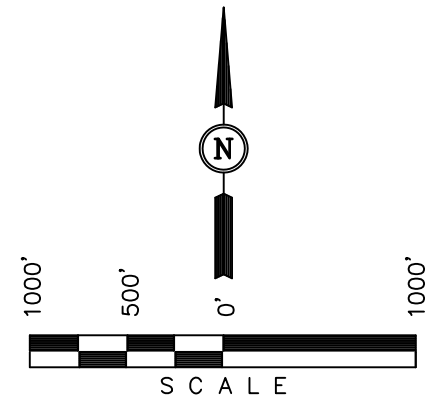
Well location, SANDBORN #05-18H, located as shown in LOT 1 of Section 18, T5N, R61W, 6th P.M., Weld County, Colorado.

### BASIS OF ELEVATION

SPOT ELEVATION LOCATED AT THE NORTHEAST CORNER OF SECTION 24, T5N, R62W, 6th P.M. TAKEN FROM THE POINT OF ROCKS, QUADRANGLE, COLORADO, WELD COUNTY, 7.5 MINUTE QUAD (TOPOGRAPHIC MAP) PUBLISHED BY THE UNITED STATES DEPARTMENT OF THE INTERIOR, GEOLOGICAL SURVEY. SAID ELEVATION IS MARKED AS BEING 4530 FEET.

### BASIS OF BEARINGS

BASIS OF BEARINGS IS A G.P.S. OBSERVATION.



### CERTIFICATE

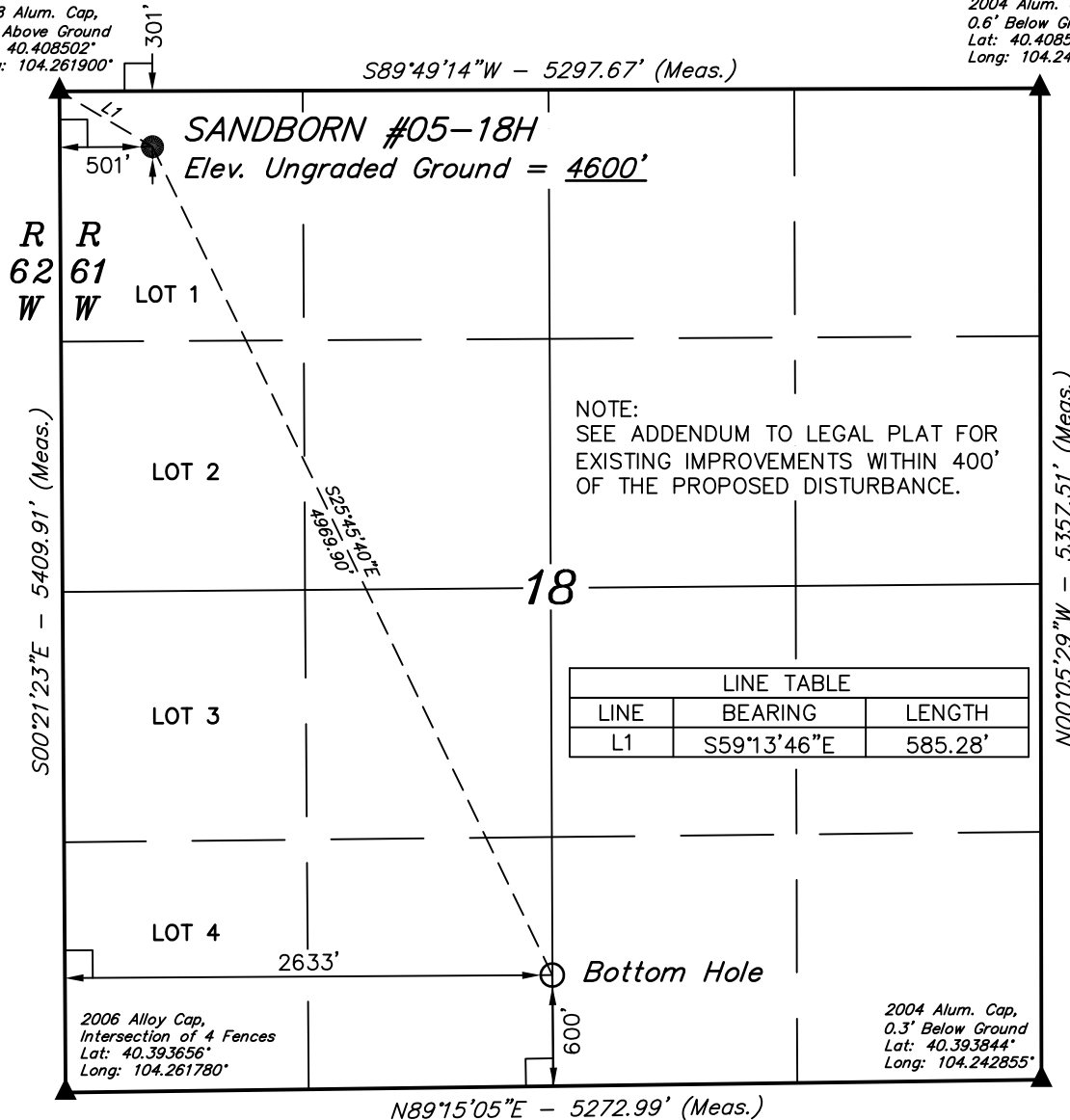
THIS IS TO CERTIFY THAT THE ABOVE PLAT WAS PREPARED FROM FIELD NOTES OF ACTUAL SURVEYS MADE BY ME OR UNDER MY SUPERVISION AND THAT THE SAME ARE TRUE AND CORRECT TO THE BEST OF MY KNOWLEDGE AND BELIEF.

REGISTERED LAND SURVEYOR  
REGISTRATION NO. 17492  
STATE OF COLORADO

**UINTAH ENGINEERING & LAND SURVEYING**  
85 SOUTH 200 EAST - VERNAL, UTAH 84078  
(435) 789-1017

2008 Alum. Cap,  
0.2' Above Ground  
Lat: 40.408502°  
Long: 104.261900°

2004 Alum. Cap,  
0.6' Below Ground  
Lat: 40.408546°  
Long: 104.242882°



NOTE:  
SEE ADDENDUM TO LEGAL PLAT FOR  
EXISTING IMPROVEMENTS WITHIN 400'  
OF THE PROPOSED DISTURBANCE.

LINE TABLE		
LINE	BEARING	LENGTH
L1	S59°13'46"E	585.28'

### LEGEND:

- └─┘ = 90° SYMBOL
- = PROPOSED WELL HEAD.
- ▲ = SECTION CORNERS LOCATED.

NAD 83 (TARGET BOTTOM HOLE)	NAD 83 (SURFACE LOCATION)
LATITUDE = 40°23'43.43" (40.395397)	LATITUDE = 40°24'27.65" (40.407681)
LONGITUDE = 104°15'08.43" (104.252342)	LONGITUDE = 104°15'36.34" (104.260094)
NAD 27 (TARGET BOTTOM HOLE)	NAD 27 (SURFACE LOCATION)
LATITUDE = 40°23'43.49" (40.395414)	LATITUDE = 40°24'27.71" (40.407697)
LONGITUDE = 104°15'06.61" (104.251836)	LONGITUDE = 104°15'34.52" (104.259589)
STATE PLANE NAD 83	STATE PLANE NAD 83
N: 1389328.14 E: 3347497.73	N: 1393772.35 E: 3345276.00
STATE PLANE NAD 27	STATE PLANE NAD 27
N: 389329.76 E: 2347647.71	N: 393773.85 E: 2345425.94

PDOP=2.1

SCALE 1" = 1000'	DATE SURVEYED: 01-17-11	DATE DRAWN: 01-27-11
PARTY G.M. J.R. K.O.	REFERENCES G.L.O. PLAT	
WEATHER COLD	FILE EOG RESOURCES, INC.	