

85 So. 200 East * Vernal, Utah 84078 * (435) 789-1017

EOG RESOURCES, INC.

CONSTRUCTION LAYOUT FOR

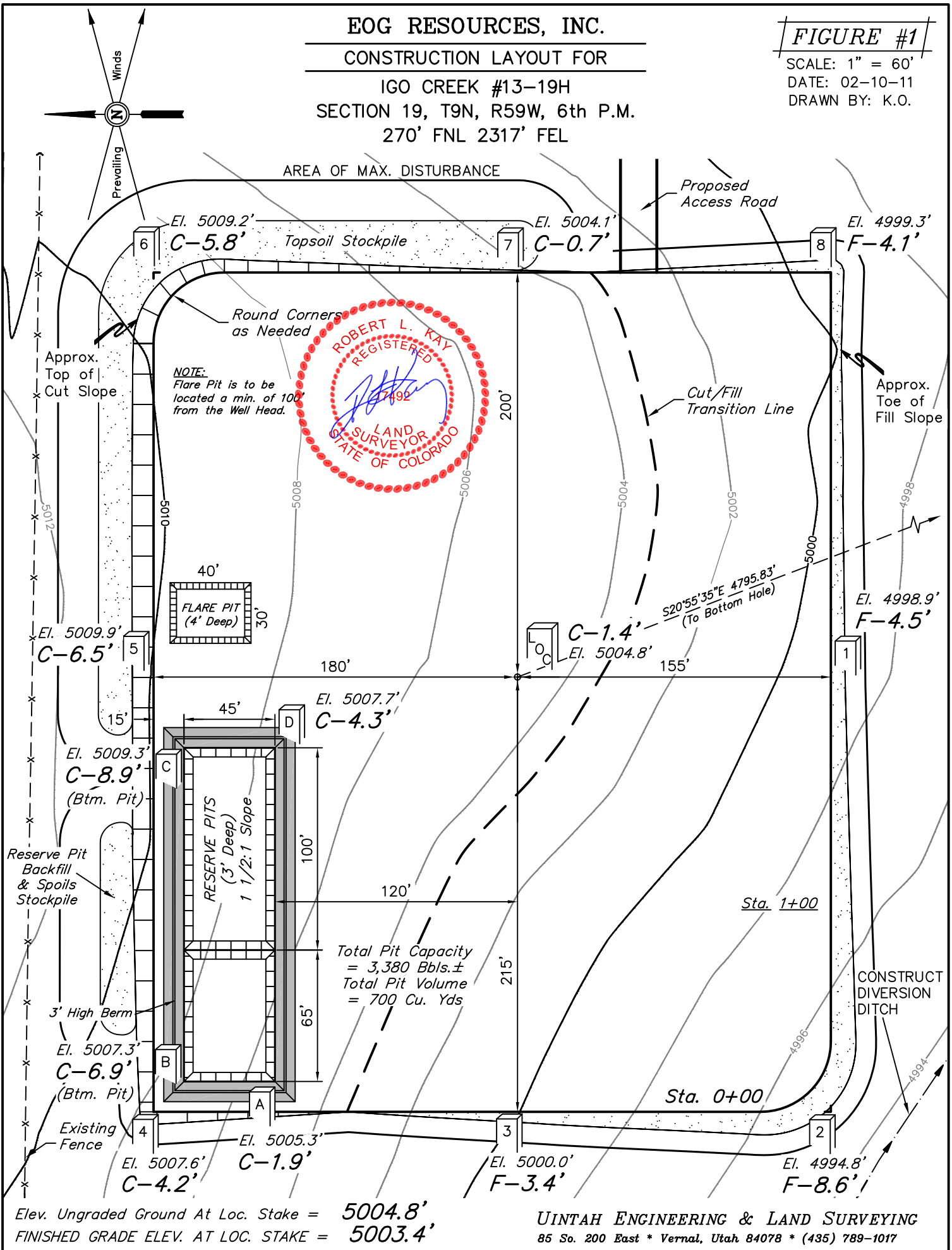
IGO CREEK #13-19H
SECTION 19, T9N, R59W, 6th P.M.
270' FNL 2317' FEL

FIGURE #1

SCALE: 1" = 60'

DATE: 02-10-11

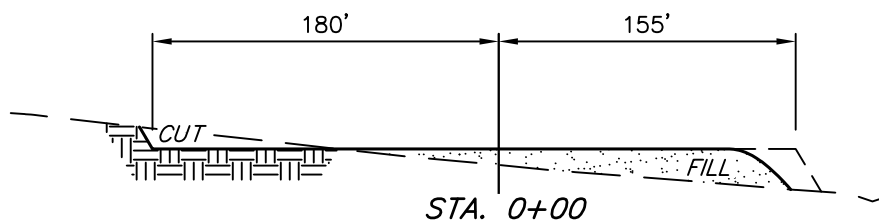
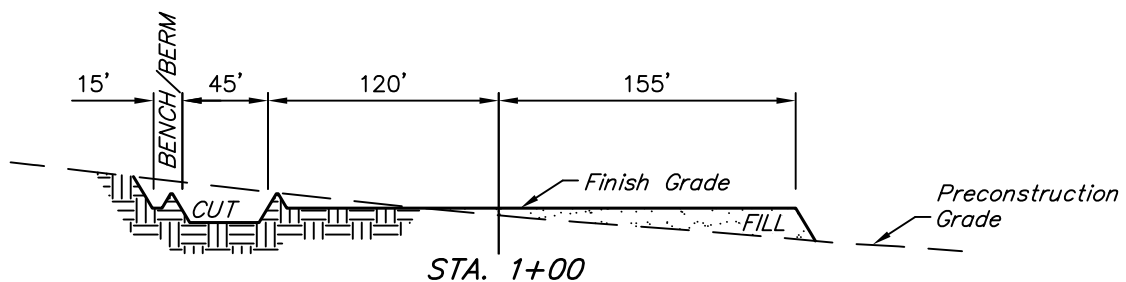
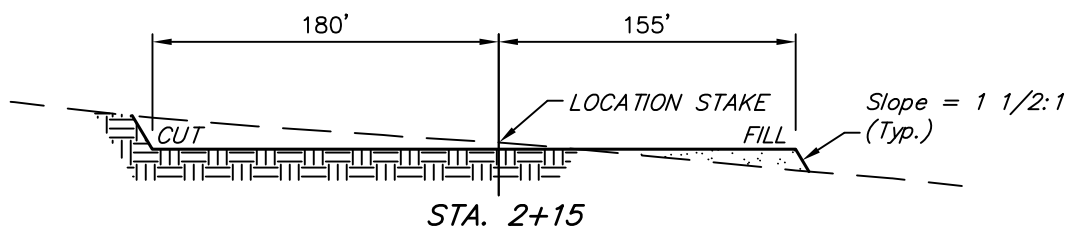
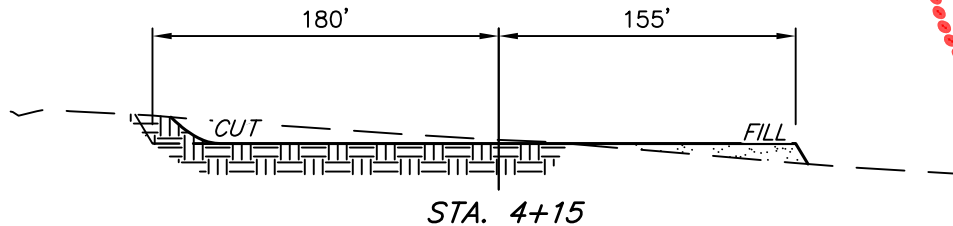
DRAWN BY: K.O.



1" = 40'
X-Section
Scale
1" = 100'
DATE: 02-10-11
DRAWN BY: K.O.

EOG RESOURCES, INC.
CONSTRUCTION LAYOUT CROSS SECTIONS FOR
IGO CREEK #13-19H
SECTION 19, T9N, R59W, 6th P.M.
270' FNL 2317' FEL

FIGURE #2



NOTE:

Topsoil should not be Stripped Below Finished Grade on Substructure Area.

APPROXIMATE ACREAGES

WELL SITE DISTURBANCE = ± 4.192 ACRES
ACCESS ROAD DISTURBANCE = ± 0.307 ACRES
TOTAL = ± 4.500 ACRES

* NOTE:
FILL QUANTITY INCLUDES 5% FOR COMPACTION

APPROXIMATE YARDAGES

(6") Topsoil Stripping = 2,830 Cu. Yds.
Remaining Location = 8,790 Cu. Yds.
TOTAL CUT = 11,620 CU.YDS.
FILL = 8,440 CU.YDS.

EXCESS MATERIAL = 3,180 Cu. Yds.
Topsoil & Pit Backfill = 3,180 Cu. Yds.
(1/2 Pit Vol.)
EXCESS UNBALANCE = 0 Cu. Yds.
(After Interim Rehabilitation)

UINTAH ENGINEERING & LAND SURVEYING
85 So. 200 East * Vernal, Utah 84078 * (435) 789-1017

EOG RESOURCES, INC.

TYPICAL RIG LAYOUT FOR

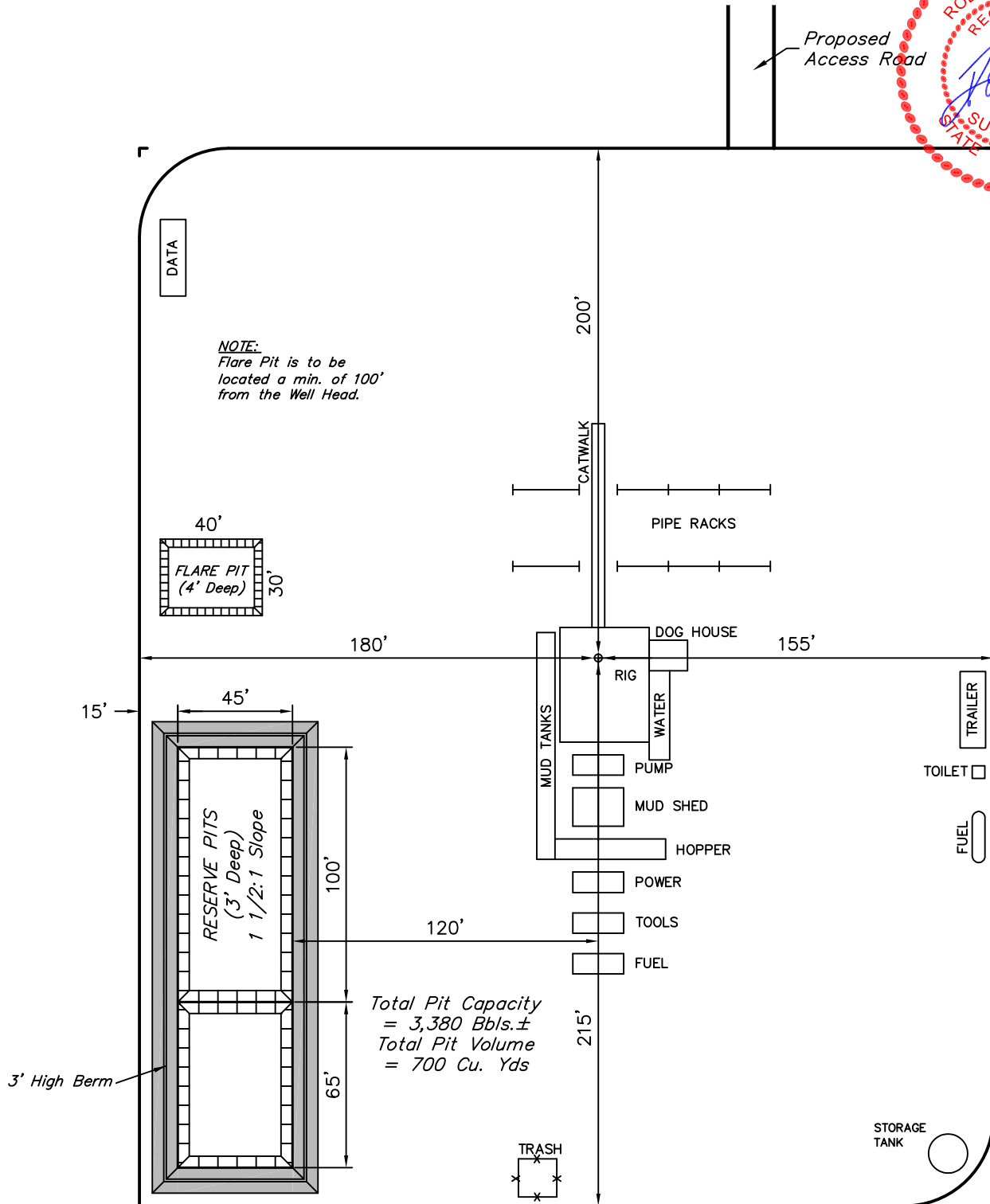
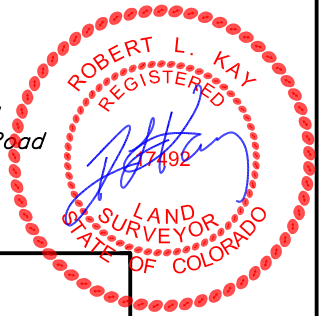
IGO CREEK #13-19H
SECTION 19, T9N, R59W, 6th P.M.
270' FNL 2317' FEL

FIGURE #3

SCALE: 1" = 60'

DATE: 02-10-11

DRAWN BY: K.O.



EOG RESOURCES, INC.

RECLAMATION DIAGRAM FOR

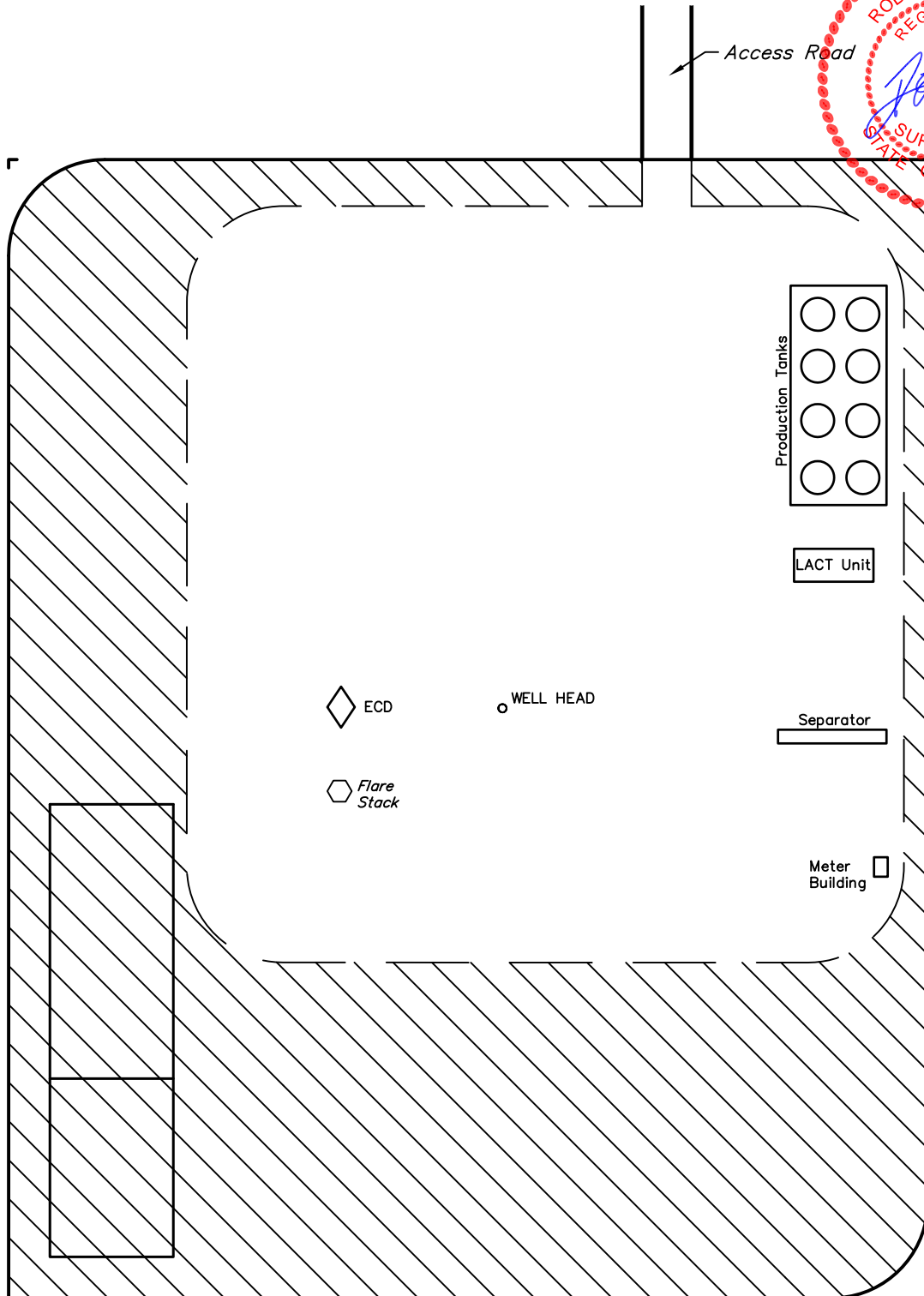
IGO CREEK #13-19H
SECTION 19, T9N, R59W, 6th P.M.
270' FNL 2317' FEL

FIGURE #4

SCALE: 1" = 60'

DATE: 02-10-11

DRAWN BY: K.O.



APPROXIMATE ACREAGES
UN-RECLAIMED = ± 1.542 ACRES



UINTAH ENGINEERING & LAND SURVEYING
85 So. 200 East * Vernal, Utah 84078 * (435) 789-1017

EOG RESOURCES, INC.

LOCATION DRAWING FOR

IGO CREEK #13-19H
SECTION 19, T9N, R59W, 6th P.M.
270' FNL 2317' FEL

FIGURE #5

2010 Alum. Cap, 0.5'
Below Gravel Road
RLS 17492
Lat: 40.743208°
Long: 104.020883°

N33°W 34.10 Miles
(To Railroad)

S89°11'19"E - 2604.07' (Meas.)

County
Road #104

Proposed
Access Road

**PTASNIK
LAND COMPANY**

N83°W 6646'
(To Building)

S50°W 1338'
(To Water Well)

Water
Well

1/16 Section Line

1/4 Section Line

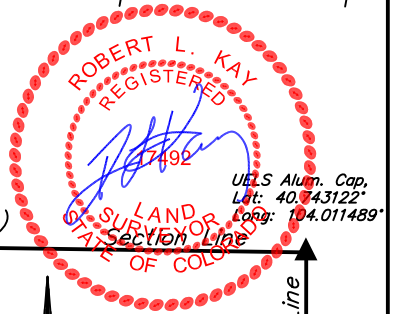
NE 1/4

19

1/4 Section Line

SE Cor. Sec. 19
2010 Alum. Cap,
Flush with Ground
RLS 17492
Lat: 40.728503°
Long: 104.011469°

S00°03'25"W - 5327.86' (Meas.)



SCALE
DATE: 02-10-11
DRAWN BY: K.O.

LINE TABLE

| LINE | DESCRIPTION | BEARING | LENGTH |
|------|--------------------|---------|--------|
| L1 | To Power Line | N01°E | 301' |
| L2 | To County Road 104 | NORTH | 272' |
| L3 | To Property Line | WEST | 286' |

PLANT COMMUNITY

- ☐ DISTURBED GRASSLAND
- ☐ NATIVE GRASSLAND
- ☐ SHRUB LAND
- ☐ PLAINS RIPARIAN
- ☐ MOUNTAIN RIPARIAN
- ☐ FOREST LAND
- ☐ WETLANDS AQUATIC
- ☐ ALPINE
- ☐ OTHER (Describe): _____

CURRENT LAND USE

- CROP LAND: ☐ IRRIGATED ☐ DRY LAND ☐ IMPROVED PASTURE ☐ HAY MEADOW ☐ CRP
- NON-CROP LAND: ☐ RANGELAND ☐ TIMBER ☐ RECREATIONAL ☐ OTHER (Describe) _____
- SUBDIVIDED: ☐ INDUSTRIAL ☐ COMMERCIAL ☐ RESIDENTIAL _____

FUTURE LAND USE

- CROP LAND: ☐ IRRIGATED ☐ DRY LAND ☐ IMPROVED PASTURE ☐ HAY MEADOW ☐ CRP
- NON-CROP LAND: ☐ RANGELAND ☐ TIMBER ☐ RECREATIONAL ☐ OTHER (Describe) _____
- SUBDIVIDED: ☐ INDUSTRIAL ☐ COMMERCIAL ☐ RESIDENTIAL _____