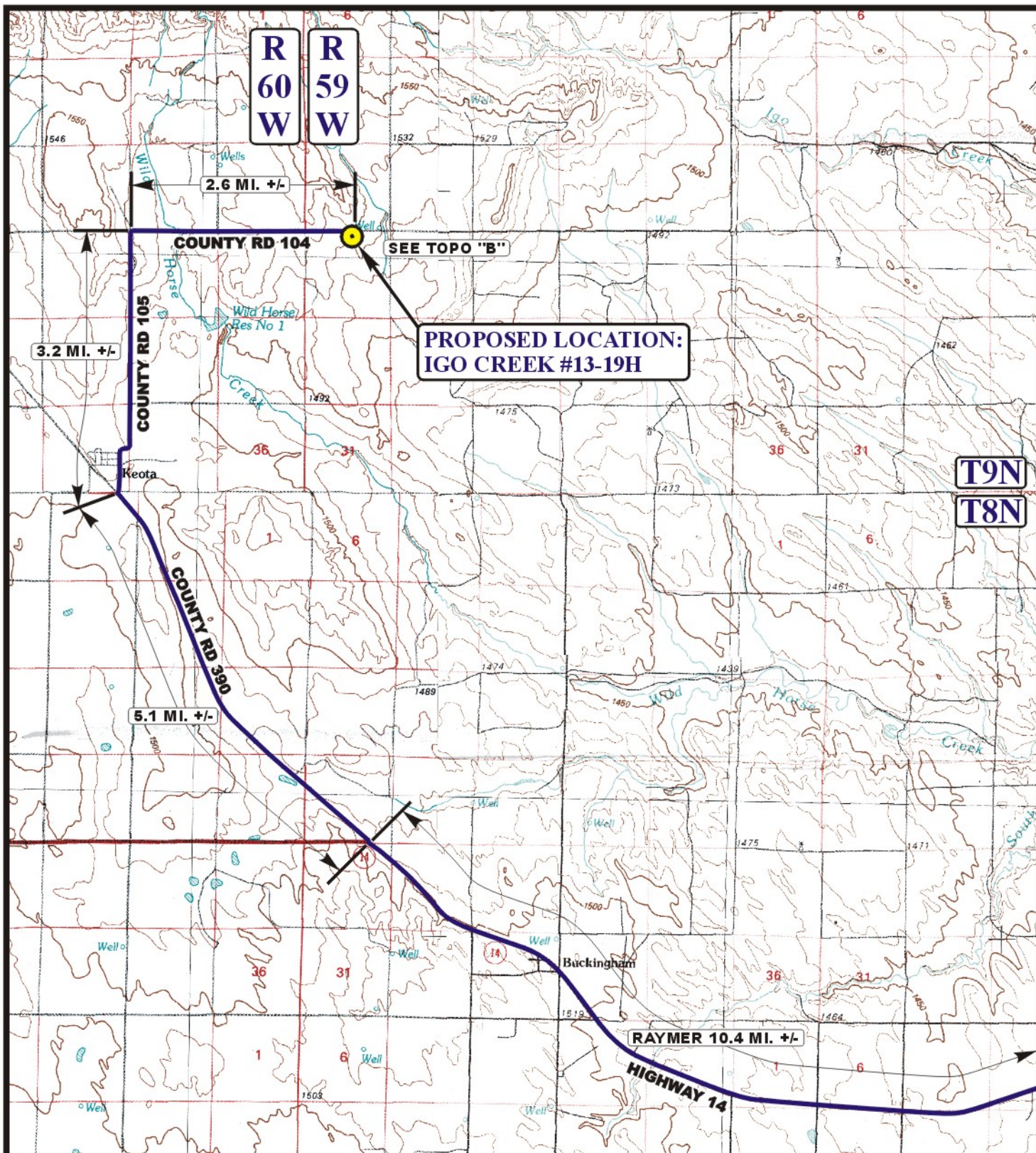


EOG RESOURCES, INC.
IGO CREEK #13-19H
SECTION 19, T9N, R59W, 6th P.M.

PROCEED IN A SOUTHWESTERLY, THEN NORTHWESTERLY DIRECTION FROM RAYMER, COLORADO ALONG HIGHWAY 14 APPROXIMATELY 10.4 MILES TO THE JUNCTION OF THIS ROAD AND COUNTY ROAD 390 TO THE NORTHWEST; TURN RIGHT AND PROCEED IN A NORTHWESTERLY DIRECTION APPROXIMATELY 5.1 MILES TO THE JUNCTION OF THIS ROAD AND COUNTY ROAD 105 TO THE NORTH; TURN RIGHT AND PROCEED IN A NORTHERLY DIRECTION APPROXIMATELY 3.2 MILES TO JUNCTION OF THIS ROAD AND COUNTY ROAD 104 TO THE EAST; TURN RIGHT AND PROCEED IN AN EASTERLY DIRECTION APPROXIMATELY 2.6 MILES TO THE BEGINNING OF THE PROPOSED ACCESS ROAD TO THE SOUTH; FOLLOW ROAD FLAGS IN A SOUTHERLY DIRECTION APPROXIMATELY 446' TO THE PROPOSED LOCATION.

TOTAL DISTANCE FROM RAYMER, COLORADO TO THE PROPOSED LOCATION IS APPROXIMATELY 21.4 MILES.



LEGEND:

PROPOSED LOCATION



EOG RESOURCES, INC.

IGO CREEK #13-19H
SECTION 19, T9N, R59W, 6th P.M.
270' FNL 2317' FEL



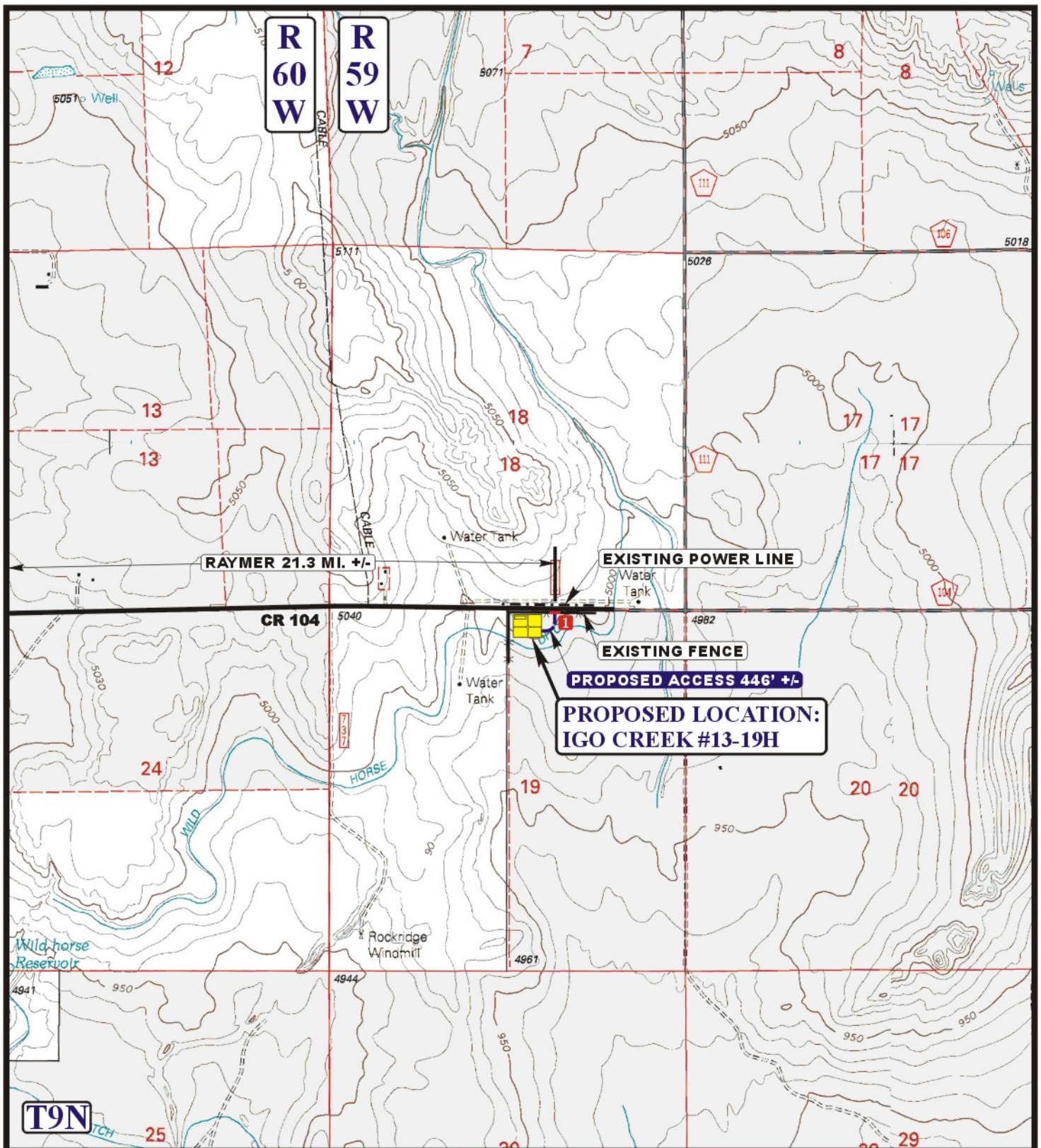
Uintah Engineering & Land Surveying
85 South 200 East Vernal, Utah 84078
(435) 789-1017 * FAX (435) 789-1813

ACCESS ROAD
MAP

02 11 11
MONTH DAY YEAR

SCALE: 1:100,000 DRAWN BY: C.A.G. REVISED: 00-00-00





LEGEND:

- EXISTING ROAD
- PROPOSED ACCESS ROAD
- EXISTING POWER LINE
- EXISTING FENCE
- INSTALL CATTLE GUARD



Utah Engineering & Land Surveying
 85 South 200 East Vernal, Utah 84078
 (435) 789-1017 * FAX (435) 789-1813



EOG RESOURCES, INC.

IGO CREEK #13-19H
SECTION 19, T9N, R59W, 6th P.M.
270' FNL 2317' FEL

ACCESS ROAD
MAP

02 11 11
 MONTH DAY YEAR

SCALE: 1" = 2000' DRAWN BY: C.A.G. REVISED: 00-00-00

B
TOPO