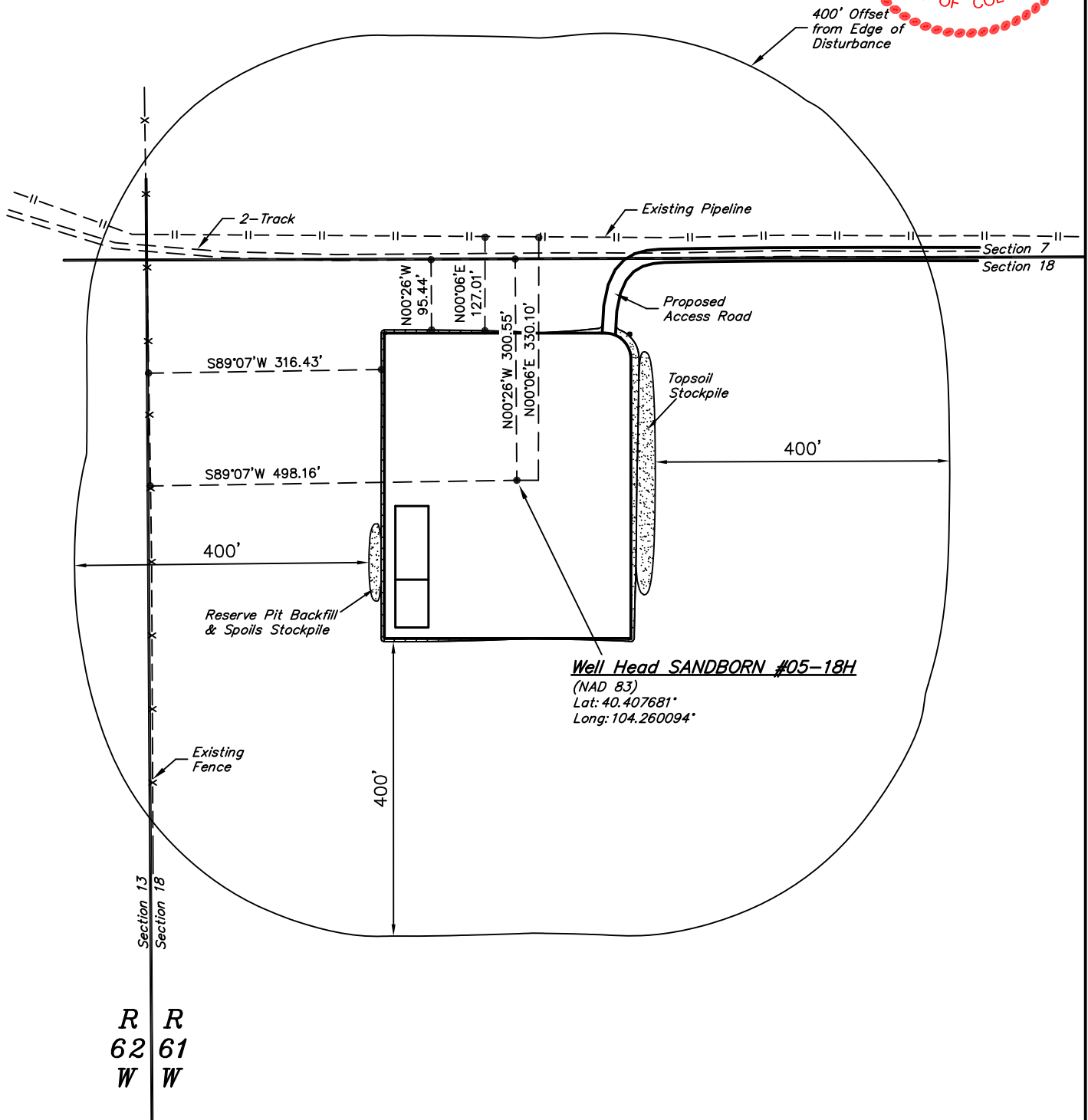


EOG RESOURCES, INC.

ADDENDUM TO LEGAL PLAT FOR

SANDBORN #05-18H
SECTION 18, T5N, R61W, 6th P.M.
301' FNL 501' FWL

SCALE: 1" = 200'
DATE: 01-28-11
DRAWN BY: K.O.

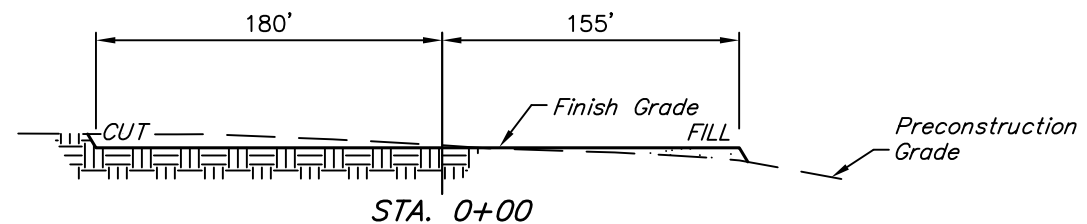
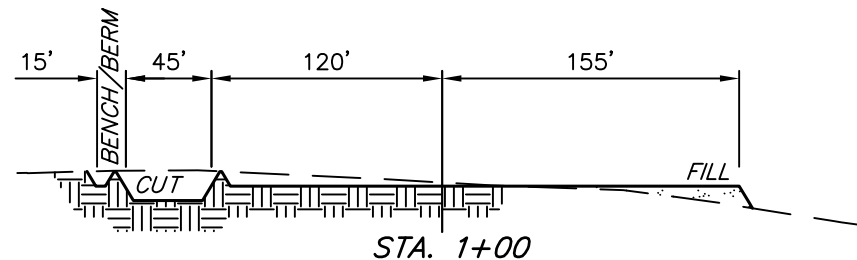
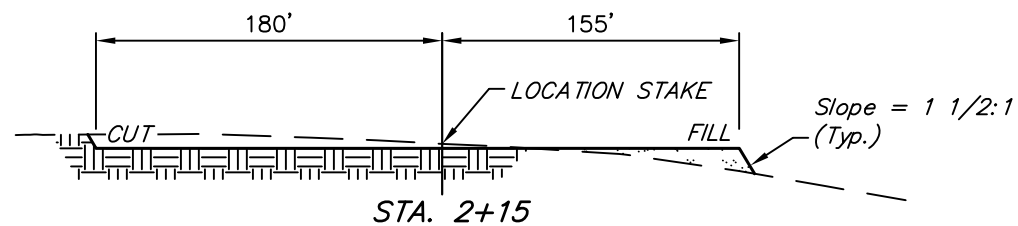
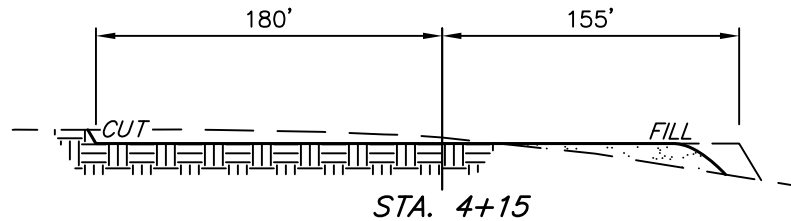


UINTAH ENGINEERING & LAND SURVEYING
85 So. 200 East * Vernal, Utah 84078 * (435) 789-1017

1" = 40'
X-Section
Scale
1" = 100'
DATE: 01-28-11
DRAWN BY: K.O.

EOG RESOURCES, INC.
CONSTRUCTION LAYOUT CROSS SECTIONS FOR
SANDBORN #05-18H
SECTION 18, T5N, R61W, 6th P.M.
301' FNL 501' FWL

FIGURE #2



NOTE:

Topsoil should not be Stripped Below Finished Grade on Substructure Area.

APPROXIMATE ACREAGES

WELL SITE DISTURBANCE = ± 4.046 ACRES
ACCESS ROAD DISTURBANCE = ± 6.969 ACRES
TOTAL = ± 11.015 ACRES

* NOTE:
FILL QUANTITY INCLUDES 5% FOR COMPACTION

APPROXIMATE YARDAGES

(6") Topsoil Stripping = 2,750 Cu. Yds.
Remaining Location = 5,630 Cu. Yds.
TOTAL CUT = 8,380 CU.YDS.
FILL = 5,280 CU.YDS.

EXCESS MATERIAL = 3,100 Cu. Yds.
Topsoil & Pit Backfill (1/2 Pit Vol.) = 3,100 Cu. Yds.
EXCESS UNBALANCE = 0 Cu. Yds.
(After Interim Rehabilitation)

UINTAH ENGINEERING & LAND SURVEYING
85 So. 200 East * Vernal, Utah 84078 * (435) 789-1017

EOG RESOURCES, INC.

TYPICAL RIG LAYOUT FOR

SANDBORN #05-18H
SECTION 18, T5N, R61W, 6th P.M.
301' FNL 501' FWL

FIGURE #3

SCALE: 1" = 60'

DATE: 01-28-11

DRAWN BY: K.O.



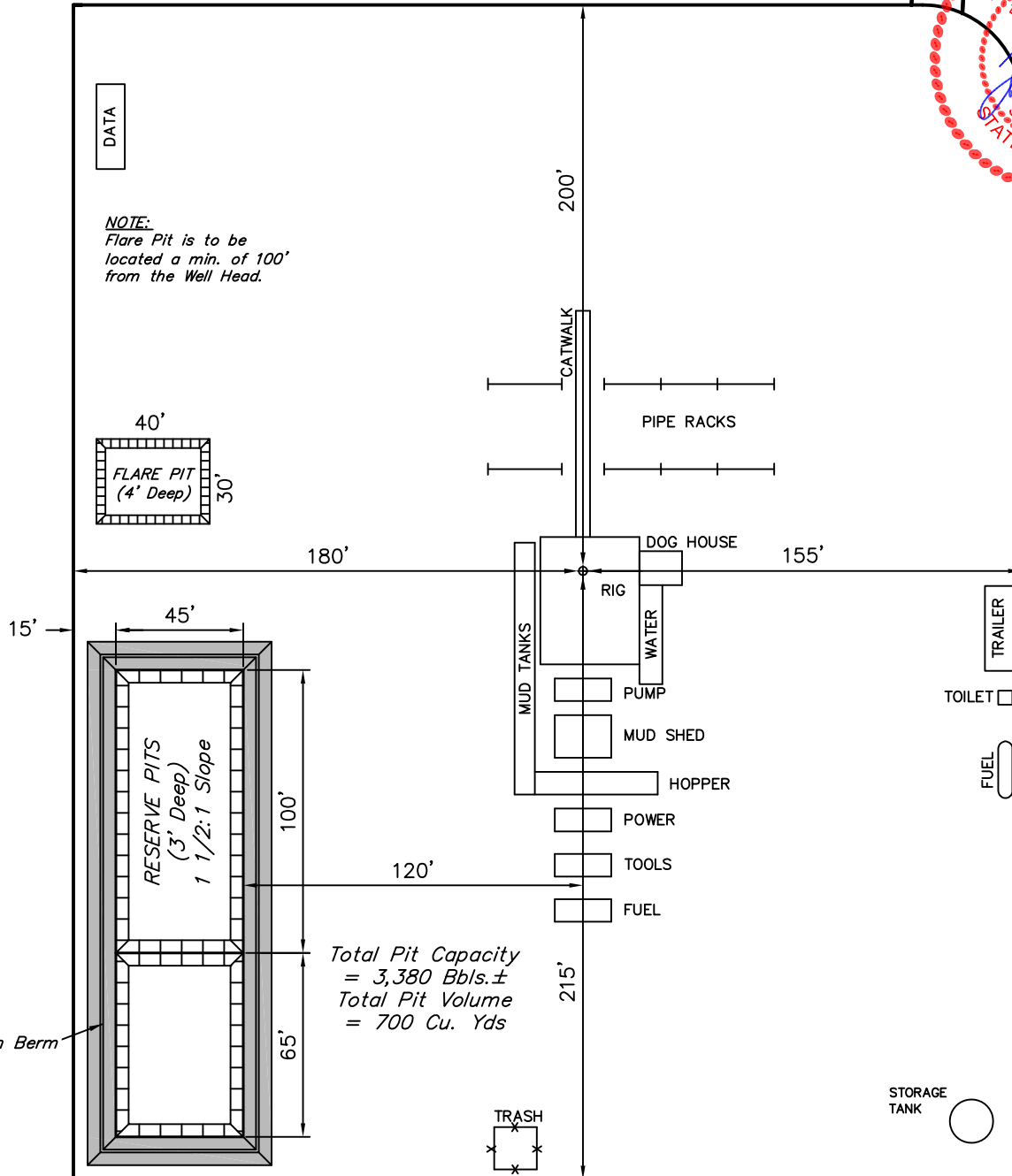
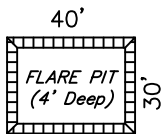
Proposed
Access Road



DATA

NOTE:

Flare Pit is to be
located a min. of 100'
from the Well Head.



UINTAH ENGINEERING & LAND SURVEYING

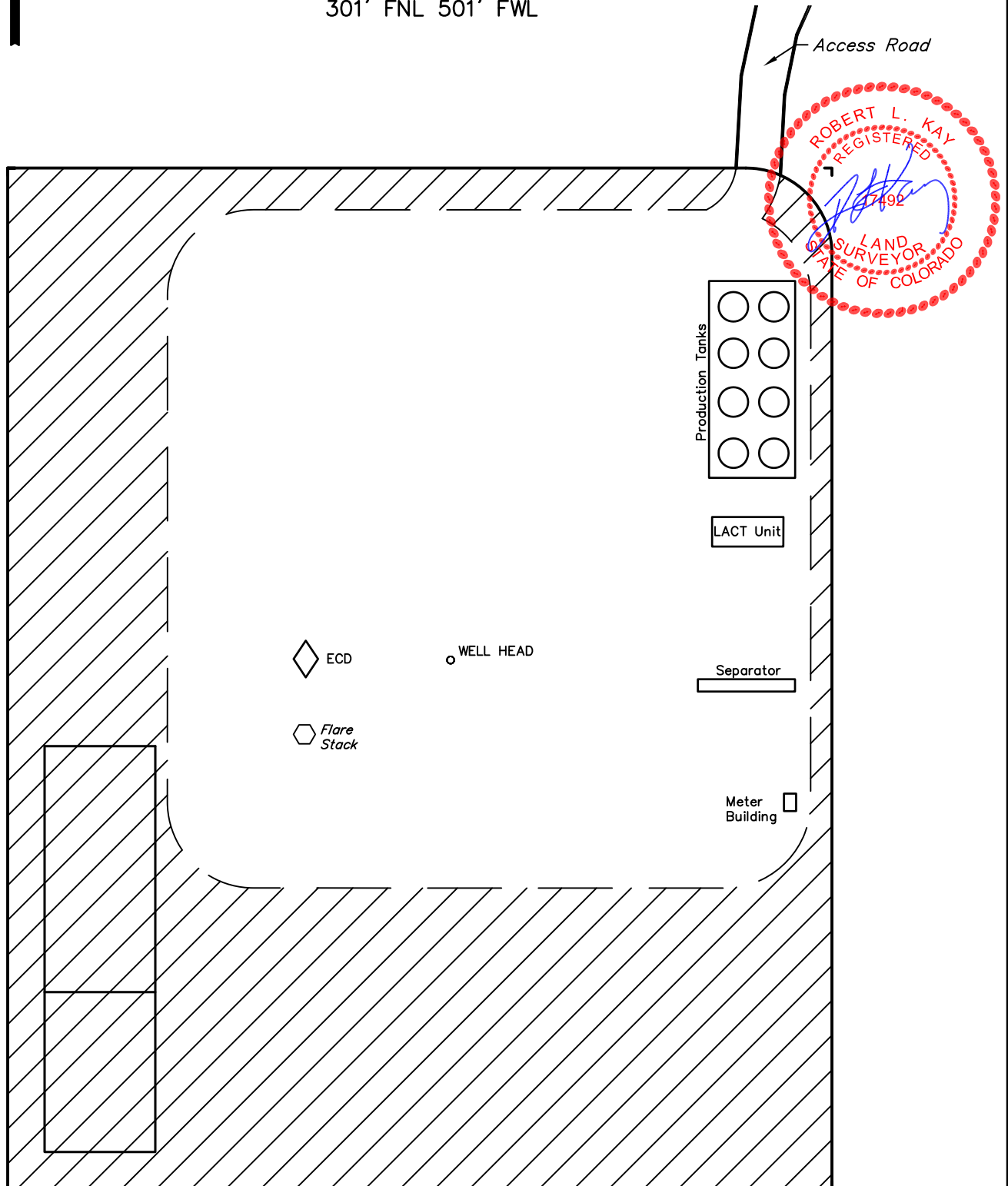
85 So. 200 East * Vernal, Utah 84078 * (435) 789-1017



EOG RESOURCES, INC.
RECLAMATION DIAGRAM FOR
SANDBORN #05-18H
SECTION 18, T5N, R61W, 6th P.M.
301' FNL 501' FWL

FIGURE #4

SCALE: 1" = 60'
DATE: 01-28-11
DRAWN BY: K.O.



APPROXIMATE ACREAGES
UN-RECLAIMED = ± 1.547 ACRES



EOG RESOURCES, INC.

LOCATION DRAWING FOR

SANDBORN #05-18H
SECTION 18, T5N, R61W, 6th P.M.
301' FNL 501' FWL

FIGURE #5

2008 Alum. Cap,
0.2' Above Ground
Lat: 40.408502°
Long: 104.261900°

Proposed
Access Road

Section Line

S89°49'14"W - 5297.67' (Meas.)

S89°39'W 501.01'
(To Property Line)

**L & S
CAPITAL LTD**

N76°34'E 3361.40'
(To Water Well)

N90°00'E 10147.00'
(To County Road #98)

S09°23'E 29443.21'
(To Power Line)

S41°08'E 14494.63'
(To Building)

Section Line

1/4 Section Line

NE Cor. Sec. 18
2004 Alum. Cap,
0.6' Below Ground
Lat: 40.408546°
Long: 104.242882°



1/16 Section Line

NW 1/4

SOUTH 16.3 Miles
(To Railroad)

R 62 W
R 61 W

S00°21'23"E - 5409.91' (Meas.)

1/4 Section Line

1/16 Section Line



SCALE
DATE: 01-28-11
DRAWN BY: K.O.

18

SW Cor. Sec. 18
2006 Alloy Cap,
Intersection of 4 Fences
Lat: 40.393656°
Long: 104.261780°

PLANT COMMUNITY

- ☐ DISTURBED GRASSLAND
- ☐ NATIVE GRASSLAND
- ☐ SHRUB LAND
- ☐ PLAINS RIPARIAN
- ☐ MOUNTAIN RIPARIAN
- ☐ FOREST LAND
- ☐ WETLANDS AQUATIC
- ☐ ALPINE
- ☐ OTHER (Describe): _____

CURRENT LAND USE

- CROP LAND: ☐ IRRIGATED ☐ DRY LAND ☐ IMPROVED PASTURE ☐ HAY MEADOW ☐ CRP
- NON-CROP LAND: ☐ RANGELAND ☐ TIMBER ☐ RECREATIONAL ☐ OTHER (Describe) _____
- SUBDIVIDED: ☐ INDUSTRIAL ☐ COMMERCIAL ☐ RESIDENTIAL _____

FUTURE LAND USE

- CROP LAND: ☐ IRRIGATED ☐ DRY LAND ☐ IMPROVED PASTURE ☐ HAY MEADOW ☐ CRP
- NON-CROP LAND: ☐ RANGELAND ☐ TIMBER ☐ RECREATIONAL ☐ OTHER (Describe) _____
- SUBDIVIDED: ☐ INDUSTRIAL ☐ COMMERCIAL ☐ RESIDENTIAL _____

UINTAH ENGINEERING & LAND SURVEYING
85 So. 200 East * Vernal, Utah 84078 * (435) 789-1017